

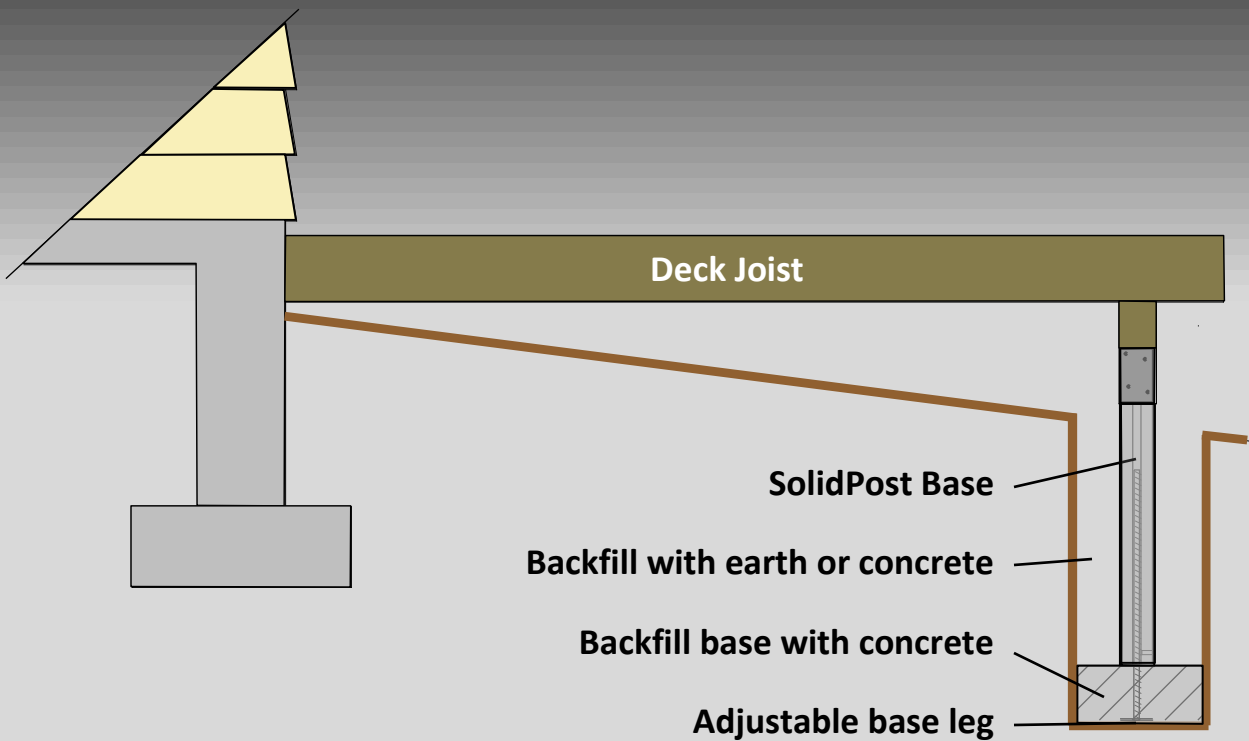
# SolidPost



## **Precast concrete post base**

- Easy to install
- High strength precast concrete
  - Heavy duty steel bracket
  - EpoxZi-Shield coating

# SolidPost Easy Installation



1. Dig post holes to proper depth
2. Adjust base leg to desired length
3. Place SolidPost base in hole & brace
4. Backfill with wet or dry concrete mix

*\* Always locate underground utilities before digging \**

***Ready to build the same day!***

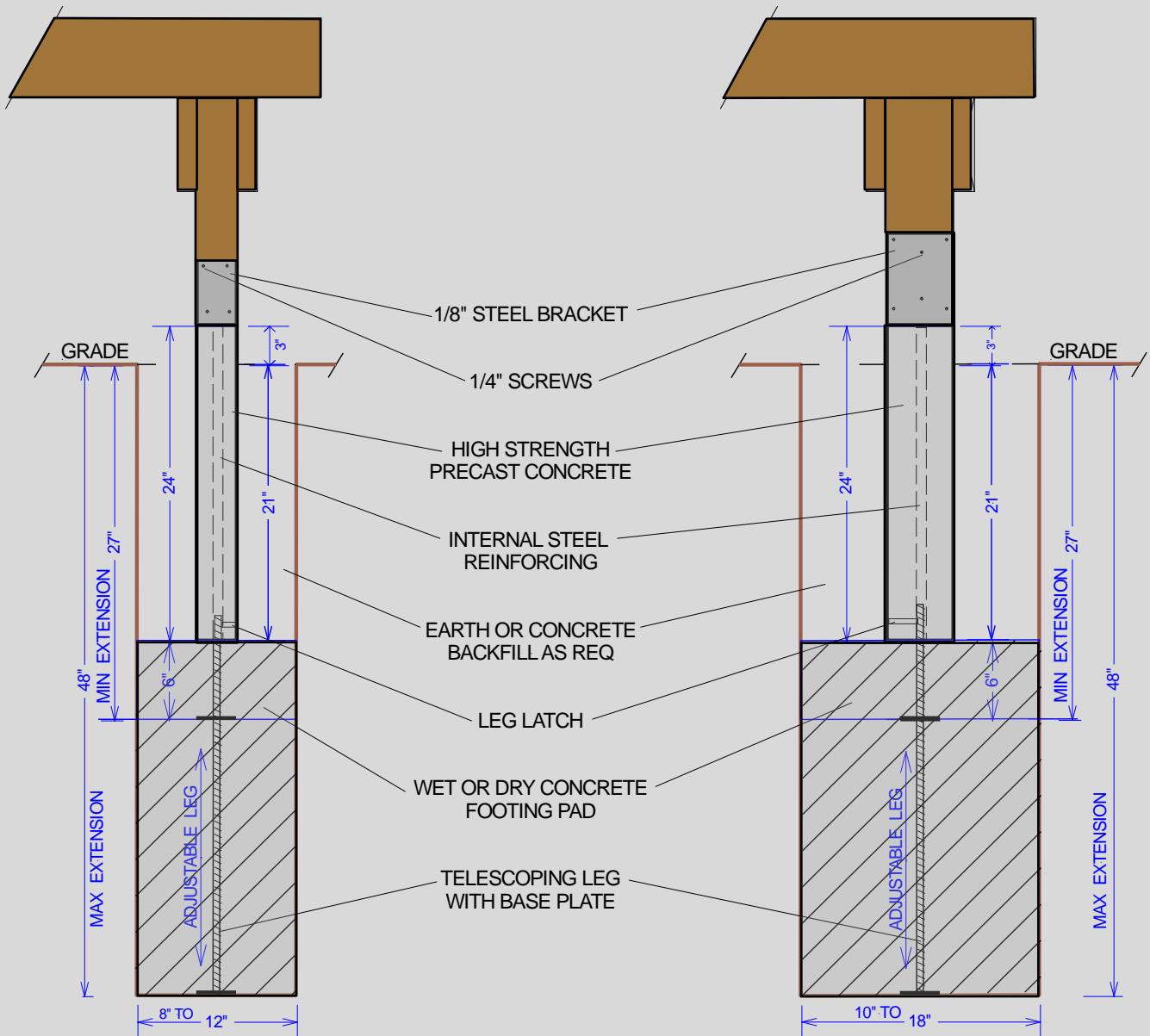
# SolidPost TWO MODELS

## SP4424

For a 3-1/2" x 3-1/2" Post  
Weighs 32 lbs

## SP6624

For a 5-1/2" x 5-1/2" Post  
Weighs 74 lbs



**Concrete Foundation for Decks!**