

eureka!

Invented for the way you clean™

AS1050 Series

OWNER'S GUIDE

Guía del Propietario

Le Guide du Propriétaire

Thank you for purchasing your new Eureka Vacuum!
¡Gracias por la compra de su nuevo aspiradora Eureka!
Merci d'avoir acheté votre nouvel aspirateur Eureka!

Before returning, call
Eureka customer service

Antes de enviar de regreso, llame al servicio al cliente de Eureka

Avant de le retourner, appelez le service à la clientèle Eureka

HELPLINE LÍNEA DE AYUDA LIGNE D'AIDE

1-800-282-2886

8 a.m. to 7:30 p.m. (CST), Monday - Friday
10 a.m. to 6:30 p.m. (CST), Saturday - Sunday

8 a.m. a 7:30 p.m. (CST), de lunes a viernes
10 a.m. a 6:30 p.m. (CST), sábado y domingo

8 h à 19 h 30 (CST), lundi au vendredi
10 h à 18 h 30 (CST), samedi et dimanche



Promotional code: eurekaad10

Special Offer – receive 15% off parts and accessories when ordering online. Promotion excludes vacuums.

Oferta especial – descuento de 15% cuando compre partes y accesorios por internet. Oferta excluye aspiradoras.

Offre spéciale – recevez 15 % de réduction sur les pièces et les accessoires lorsque vous commandez en ligne. La promotion exclut les aspirateurs.



Upright Vacuum Cleaner
Household Type
Aspiradora vertical
tipo doméstico
Aspirateur vertical
de type résidentiel

www.eureka.com

Where to find important vacuum information

Keep this information

Write the model, type and serial number here:

Date of purchase (keep your receipt) _____

Model number and type _____

Serial number _____

Find these numbers on a label on the middle back side of the vacuum cleaner. Refer to these numbers when ordering parts and accessories or if service is needed.



Before you start your vacuum cleaner

Refer to Quick Start Guide for assembly and use. This Owner's Guide provides important instructions to prolong the life of your Eureka vacuum cleaner.

Inspection

Carefully unpack and inspect your new Eureka vacuum cleaner for shipping damage. Each unit is tested and thoroughly inspected before shipping. For instructions regarding any shipping damage, call Eureka Customer Service **HELPLINE 1-800-282-2886** immediately.

Table of contents

Important safeguards	1
How to identify parts of vacuum cleaner	2
Maintenance schedule	2
Disposable dust bag, filter, screen and exhaust/HEPA filter.	
How to use accessories	3
2-position wand, crevice tool, dusting brush, turbo nozzle, bare floor nozzle, and stair hose.	
How to maintain your vacuum cleaner	4
Maintain brush roll, replace U belt, and how to clear a blockage.	
How to maintain turbo nozzle	5
Eureka limited warranty information	5
Thermal cut-off and problem solving	6
Spanish owner's guide	7-13
French owner's guide	14-20
Order forms and parts list	21-22



Follow caution information wherever you see this symbol.

IMPORTANT SAFEGUARDS

When using an electrical appliance, basic precautions should always be followed, including the following:

READ ALL INSTRUCTIONS BEFORE USING THIS VACUUM CLEANER WARNING



To reduce the risk of fire, electric shock, or injury:

- Do not use outdoors or on wet surfaces.
- **Do not leave vacuum cleaner when plugged in.** Turn off the switch and unplug the electrical cord when not in use and before servicing.
- Do not allow to be used as a toy. Close attention is necessary when used by or near children.
- Use only as described in this manual. Use only manufacturer's recommended attachments.
- Do not use with damaged cord or plug. If vacuum cleaner is not working as it should, has been dropped, damaged, left outdoors, or dropped into water, return it to a service center before using.
- Do not pull or carry by cord. Do not use cord as a handle. Do not close a door on cord or pull cord around sharp edges or corners. Do not run vacuum cleaner over cord. Keep cord away from heated surfaces.
- Do not use extension cords or outlets with inadequate current carrying capacity.
- Turn off all controls before unplugging.
- Do not unplug by pulling on cord. To unplug, grasp the plug, not the cord.
- Do not handle plug or vacuum cleaner with wet hands.
- Do not put any object into openings. Do not use with any opening blocked; keep free of dust, lint, hair, and anything that may reduce airflow.
- This vacuum cleaner creates suction and contains a revolving brush roll. Keep hair, loose clothing, fingers, and all parts of body away from openings and moving parts.
- Do not place vacuum cleaner on furniture or stairs as the brush roll may cause damage. Use extra care when cleaning stairs. Place vacuum cleaner on floor with the handle in storage position while using attachments.
- Do not pick up anything that is burning or smoking, such as cigarettes, matches, or hot ashes.
- Do not use without bag compartment, disposable dust bag and HEPA exhaust filter in place.
- Belt pulleys can become hot during normal use. To prevent burns, avoid touching the belt pulley when servicing the drive belt.
- Do not use to pick up flammable or combustible liquids such as gasoline, or use in areas where they may be present.
- Store your vacuum cleaner indoors in a cool, dry area.
- Keep your work area well lighted.
- Unplug electrical appliances before vacuuming them.
- Unplug before connecting turbo nozzle.

SAVE THESE INSTRUCTIONS

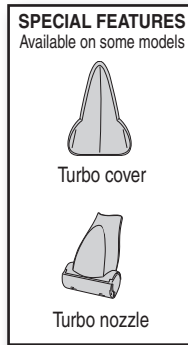
To reduce the risk of electric shock, this appliance has a polarized plug (one blade is wider than the other). This plug will fit in a polarized outlet only one way. If the plug does not fit fully into the outlet, reverse the plug. If it still does not fit, contact a qualified electrician to install the proper outlet. Do not change the plug in any way.



Motor

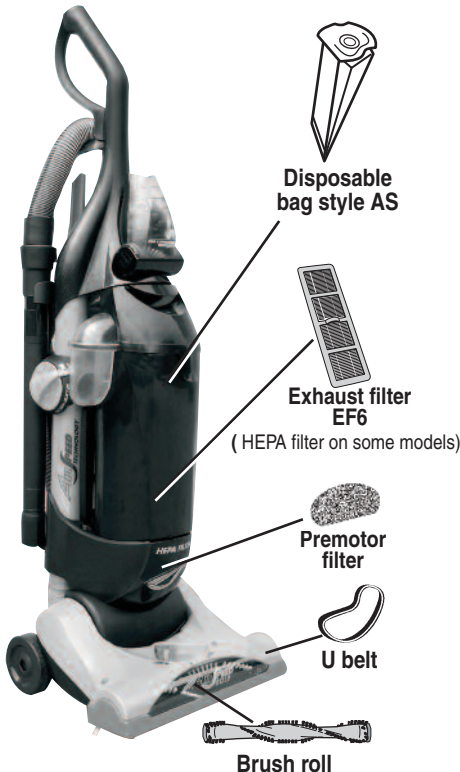
Do Not Oil the motor or the brush roll at any time. The bearings are permanently lubricated and sealed.

How to identify parts of vacuum cleaner

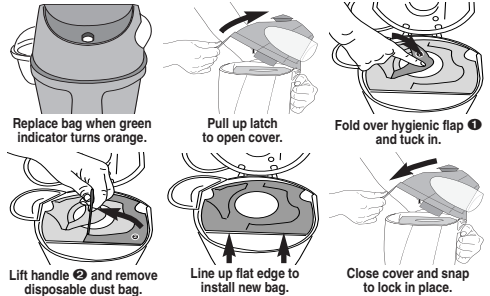


Maintenance schedule

 READ ALL INSTRUCTIONS BEFORE USING THIS VACUUM CLEANER. Moving parts! Power switch is marked  for ON-OFF.

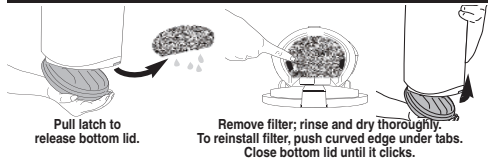


DISPOSABLE DUST BAG, Style AS – Replace when indicator turns orange



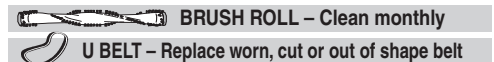
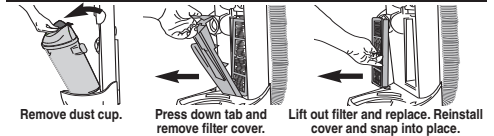
Never use vacuum without dust bag in place

PREMOTOR FILTER – Clean as needed to maintain suction



Never use vacuum without premotor filter in place

EXHAUST FILTER EF6 – Replace within 6 months



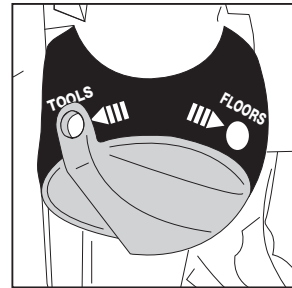
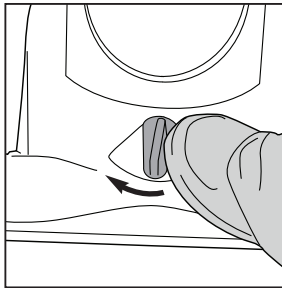
How to use accessories



Handle must be in upright position.

Before using accessories

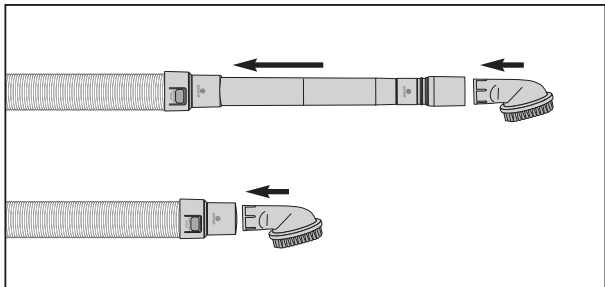
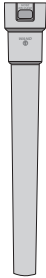
- 1) Raise height adjustment to 'high carpet.'
- 2) Turn air path selector knob to 'tools.'



2-Position wand

Loosen wand and hose from back of vacuum.

- Push tool onto end of wand.
- For short wand, push hose release button to remove wand. Attach tool to end of hose.



Crevice tool

Use for baseboards, corners and tight spaces.



Dusting brush

Use for furniture, drapes and vents.



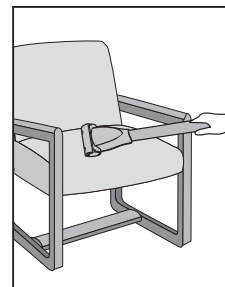
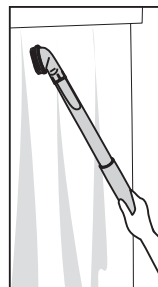
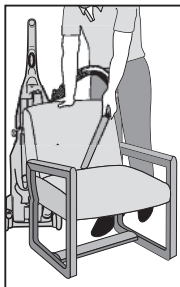
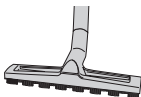
Turbo nozzle

(with some models or available for purchase)
Use for furniture and stairs.



Bare floor nozzle and wand

(with some models or available for purchase)
Use for hard surfaces.

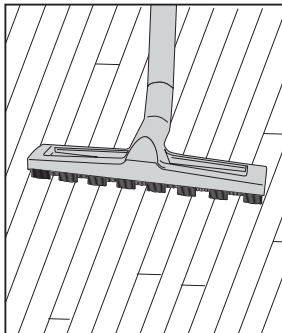


Stair hose

(with some models or available for purchase)

Make sure vacuum is below you, pushed against the bottom step.

- 1) Attach stair hose to end of hose or wand.
- 2) Attach turbo nozzle to end of stair hose.



NOTE: Hose length can be increased by releasing the hose from the hose retainer on back of unit. Reposition hose inside hose retainer after using accessories.





How to maintain your vacuum cleaner

Make sure vacuum cleaner is turned off and power cord is unplugged.

Maintain brush roll



Motor pulley can become hot with normal use.

Remove hair and threads from brush roll periodically. Do not remove end caps.



Check U belt. Replace if worn, cut or out of shape.

Avoid touching the motor shaft when checking brush roll or belt.

How to replace brush roll or belt

- 1) Step on handle release to lower handle flat onto floor (Fig.1).
- 2) Remove 4 screws from brush roll cover. (Fig. 2).
- 3) Lift off brush roll cover. (Fig. 3).
- 4) Remove brush roll and belt. Thread new belt around motor shaft and brush roll (Fig. 4).
- 5) Insert left end of brush roll first. Make sure end cap fits into base. Pull right side of brush roll to stretch belt and insert right end cap into base (Fig. 5). Make sure it slides into position.
- 6) Rotate brush roll 2 turns to center belt.
- 7) Replace brush roll cover (Fig. 3).
- 8) Replace 4 screws (Fig. 6).

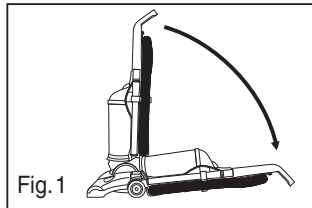


Fig. 1

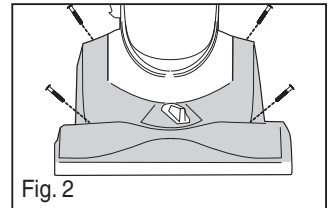


Fig. 2

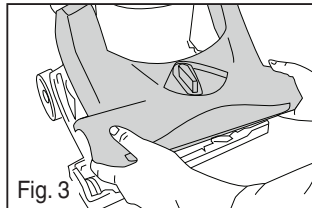


Fig. 3

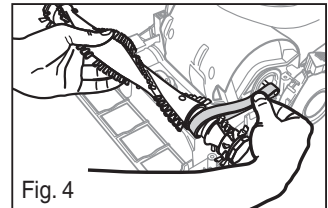


Fig. 4

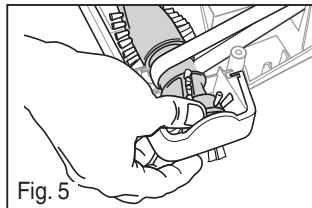


Fig. 5

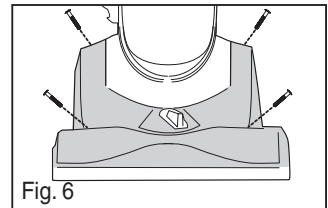


Fig. 6



How to clear a blockage

Make sure vacuum is turned off and power cord is unplugged.

Hose blockage

- 1) Remove hose from hose retainer. Flex the hose to loosen any blockage (Fig.1).
- 2) Remove dust cup. Set air path knob to 'floors.' Use finger to check for debris. (Fig 2)
- 3) **Base hose** – Pull down to loosen end of base hose. Use finger to clear blockage. Snap hose end back up into position (Fig 3).
- 4) **Hose connector** – Pull out on left side tab to remove connector. Remove debris. Align tab at right and snap connector back into place (Fig. 4).

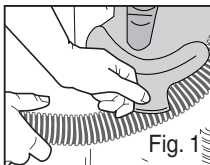


Fig. 1

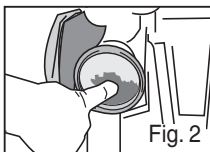


Fig. 2

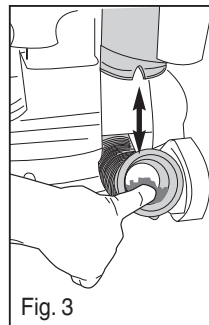


Fig. 3

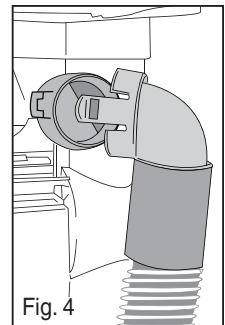
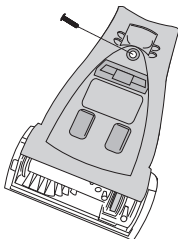


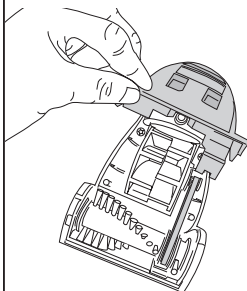
Fig. 4

How to maintain turbo nozzle (on some models)

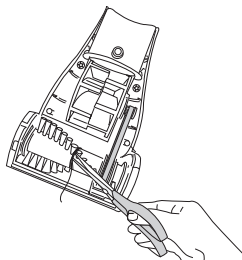
1) Turn nozzle onto back side. Remove 1 screw.



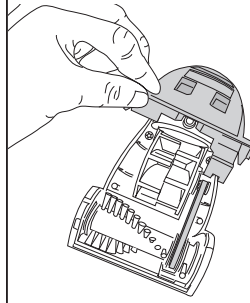
2) Rotate lower part of cover down over brush and lift off cover.



3) Clear blockage from brush roll area. Use scissors to clip threads or hair.



4) Place cover back into position. Tighten screw.



ENGLISH

The Eureka limited warranty

Eureka warrants this vacuum cleaner to be free from defects in material and workmanship for a term of three years for normal household use. Warranty is granted only to the original purchaser and members of immediate household.

This warranty is good for three years from the date of purchase only when the vacuum cleaner is used in the accordance with Eureka operating instructions. **Note:** refurbished or remanufactured products have a one year limited warranty.

This warranty does not cover

- Parts of the vacuum that require replacement under normal use such as disposable dust bags, filters, drive belts, light bulbs, brush roll, bristles, impellers and cleaning.
- Damages or malfunctions caused by negligence, abuse, and use not in accordance with the Owner's Guide.
- Defects or damages caused by unauthorized service or the use of other than Genuine Eureka, ARM & HAMMER™ and Filtrete™ by 3M parts.

What Eureka will do

Eureka will, at its option, repair or replace a defective vacuum or vacuum part that is covered by this warranty. As a matter of warranty policy, **Eureka will not refund the consumer's purchase price.**

Warranty registration

Please fill out and return the warranty registration card accompanying your vacuum.

Obtaining warranty service

To obtain warranty service you must return the vacuum or vacuum part along with "proof of purchase" to any Eureka Authorized Warranty Station. For Eureka Authorized Warranty Station or Service Information, visit www.eureka.com,

write or telephone toll free:

USA: 1-800-282-2886

Electrolux Home Care
North America Service Division
P.O. Box 3900
Peoria, IL 61612

Mexico: (55) 5343-4384

Electrolux Home Care

Canada: 1-800-282-2886

Electrolux Home Care
North America Service Division
5855 Terry Fox Way
Mississauga, Ontario L5V 3E4

Obtaining warranty service outside your community

You must pay the shipping charges to the Eureka Authorized Warranty Station.

Return shipping charges will be paid by the Warranty Station. When returning parts for repair, please include the model, type and serial number located on the rating plate on the lower backside of the vacuum.

Further limitations and exclusions

Any warranty that may be implied in connection with your purchase or use of the vacuum, including any warranty of Merchantability or any warranty for Fitness For A Particular Purpose is limited to the duration of this warranty. Some states do not allow limitations on how long an implied warranty lasts, so the above limitations may not apply to you.

Your relief from the breach of this warranty is limited to the relief expressly provided above. In no event shall the manufacturer be liable for any consequential or incidental damages you may incur in connection with your purchase or use of the vacuum.

Some states do not allow the exclusion or limitation of incidental or consequential damages, so the above limitation or exclusion may not apply to you.

This warranty gives you specific legal rights. You may also have other rights, which may vary by state.

The ARM & HAMMER name is a trademark of Church and Dwight Co., Inc. 3M and Filtrete are trademarks of 3M Company, used by Electrolux Home Care Products, Inc. under license.

Thermal cut-off

This vacuum cleaner has a special thermostat that protects the vacuum in case of motor overheating. If the vacuum suddenly shuts off, push the power switch to off and unplug the vacuum. Check the vacuum for a possible source of overheating such as a full dust cup, blocked hose or clogged filter. If these conditions are found, fix them and wait at least 30 minutes before attempting to use the vacuum. After the 30 minute period, plug the vacuum back in and turn on the switch. If the vacuum still does not work, take it to a Eureka authorized service center for repair or call 1-800-282-2886.

Problem solving

 **Make sure vacuum is turned off and power cord is unplugged.**

Problem	Cause	Solution
Motor will not start.	Power plug	<ul style="list-style-type: none"> • Push plug securely into outlet, try another outlet or check circuit breaker.
	Power switch	<ul style="list-style-type: none"> • Step on power switch to turn vacuum on.
	Thermal cut-off	<ul style="list-style-type: none"> • See above.
Vacuum does not clean carpet or bare floor.	Dust bag and filter	<ul style="list-style-type: none"> • Replace dust bag, clean and/or change filters. • If picking up fine dust, the dust bag may not look full, but a fine substance tends to reduce suction when it blocks air flow through the bag and filters. Refer to page 2 for filter maintenance. Make sure filters and dust bag are installed properly.
	Air path selector	<ul style="list-style-type: none"> • Turn selector knob to 'floors.'
	Belt	<ul style="list-style-type: none"> • Replace a worn, cut or out of shape belt. Page 4
	Hose	<ul style="list-style-type: none"> • Remove clogs from the hose that restrict the airflow. Make sure hose is replaced into hose retainer. Page 4
	Bare floor setting	<ul style="list-style-type: none"> • For bare floor cleaning, turn height adjustment knob to bare floor position.
	Carpet height setting	<ul style="list-style-type: none"> • Turn height adjustment knob to another position.
No suction at the end of hose.	Dust bag and filter	<ul style="list-style-type: none"> • Replace dust bag, clean and/or change filters. • If picking up fine dust, the dust bag may not look full, but a fine substance tends to reduce suction when it blocks air flow through the bag and filters. Refer to page 2 for filter maintenance. Make sure filters and dust bag are installed properly.
	Air path selector	<ul style="list-style-type: none"> • Turn selector knob to 'tools.'
	Hose	<ul style="list-style-type: none"> • Remove clogs from the hose that restrict the airflow. Make sure hose is replaced into hose retainer. Page 4
Turbo nozzle will not turn (on some models).	Rotating brush	<ul style="list-style-type: none"> • Check turbo nozzle for debris. Page 5 • If no suction at end of hose, turn selector knob to 'tools.'
Vacuum is hard to push.	Vacuum height setting	<ul style="list-style-type: none"> • Adjust knob to a higher position.
	Belt	<ul style="list-style-type: none"> • Replace a worn, cut or out of shape belt. Page 4
Burning smell; brush roll will not turn.	Belt	<ul style="list-style-type: none"> • Check brush roll for debris. Page 4 • Replace broken or out of shape belt. Page 4