

Light is OSRAM



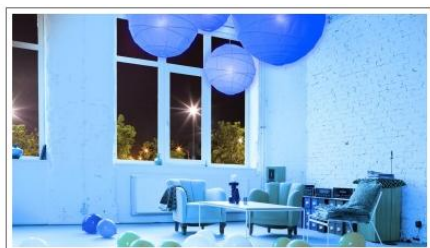
User-Guide LIGHTIFY App

Smart connected light



Discover a new dimension of light

- Control your lights individually or in groups – at home or on the go.
- Recall preset scenes at any time – it's easy and convenient!
- Give your home an individual touch and choose the right light atmosphere for any occasion.
- Use your light to relax or to work – with the tunable white function the perfect light for your personal needs is just a swipe away!
- Use the timer function to automate your lights.



Content

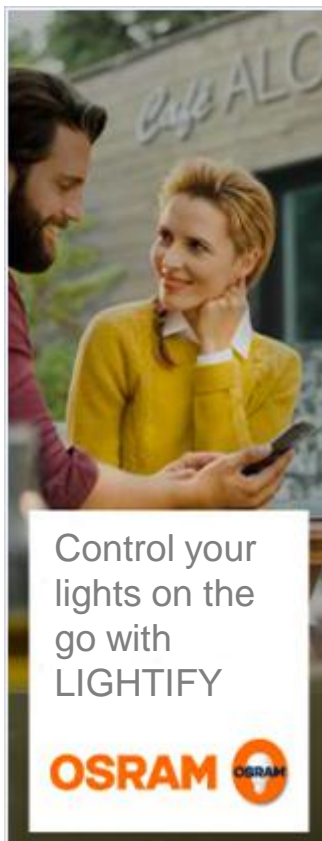
Overview: Symbols and Connection	2
Home: Groups and Scenes	3
Lights: Control and Personalisation	5
Extras: Timer Features	8
Settings	9

Light is OSRAM



Status


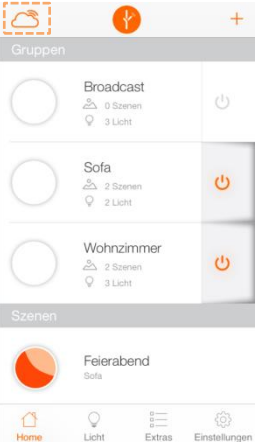



Possibilities with LIGHTIFY



Your connection to LIGHTIFY

- Your lights can be controlled via smartphone from your home or on the go.
- The symbol on the upper left side of the display gives you the information about the current status of the connection.
- For local control (from within the home Wi-Fi but without internet connection) the functionality of the App is limited. For example it is not possible to store settings or add new lights.
- Should you have no connection, please check your internet and Wi-Fi connection or move within reach of your LIGHTIFY system.

Symbols

	Cloud connection (from outside the home Wi-Fi)	
	Cloud connection with internet access via the home Wi-Fi	
	Local control (no internet connection – limited functionality)	
	No connection	



Light is OSRAM

Home

Standard settings, status overview, groups and scenes

Connection status

Tap here to change the settings of the group (colour, colour temperature, dimming level) or to change the name of the group

Tap here to change the settings of the scene (colour, colour temperature, dimming level)

Tap here to add a group

Tap here to manage the group's general settings: add or delete participants, delete scenes

Switch group On or Off (including status)

Tap here to recall scene

Tapping on the symbols recalls the respective menu item – the active one is marked orange

Group settings

Back to "Home"

Start Colour loop

Change colour*

Choose between warm- and cool white**

Dimming

Tap here to add scene

Tap here to rename group

Tap here to add colour to Favorites

Switch group On or Off (including status)

Tapping on the symbols recalls the respective menu item – the active one is marked orange.

Light Control Presets Favorites Camera

* Only for RGB products available
 ** Only for products with Tunable White functionality



Light is OSRAM

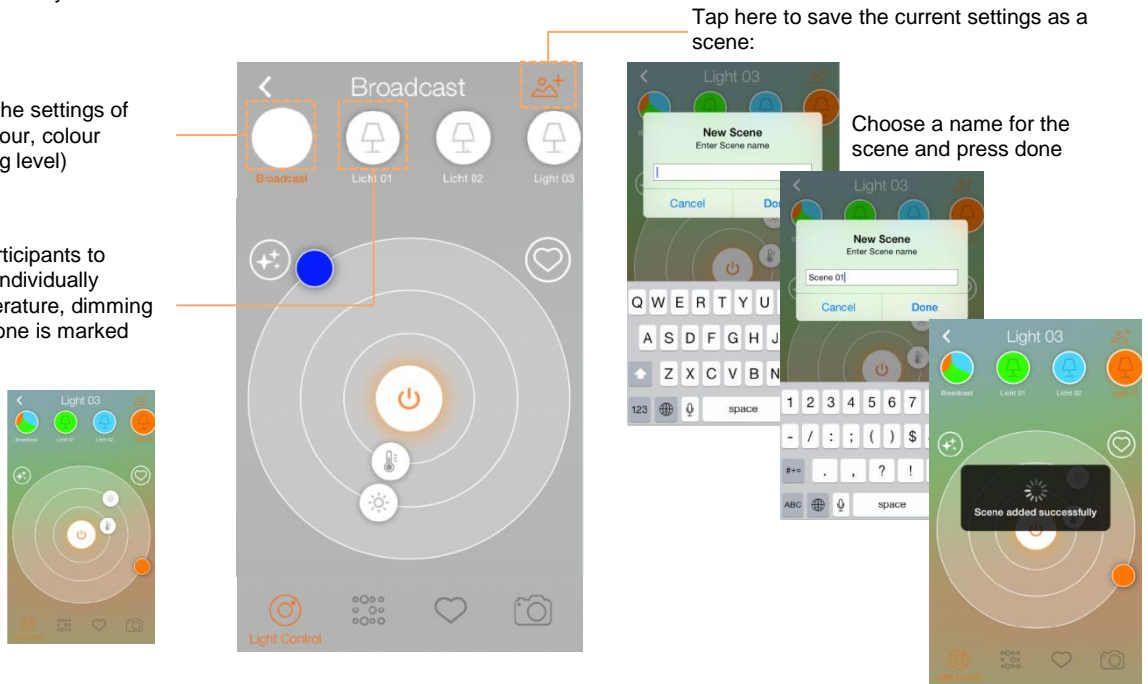
Home

Set Scenes

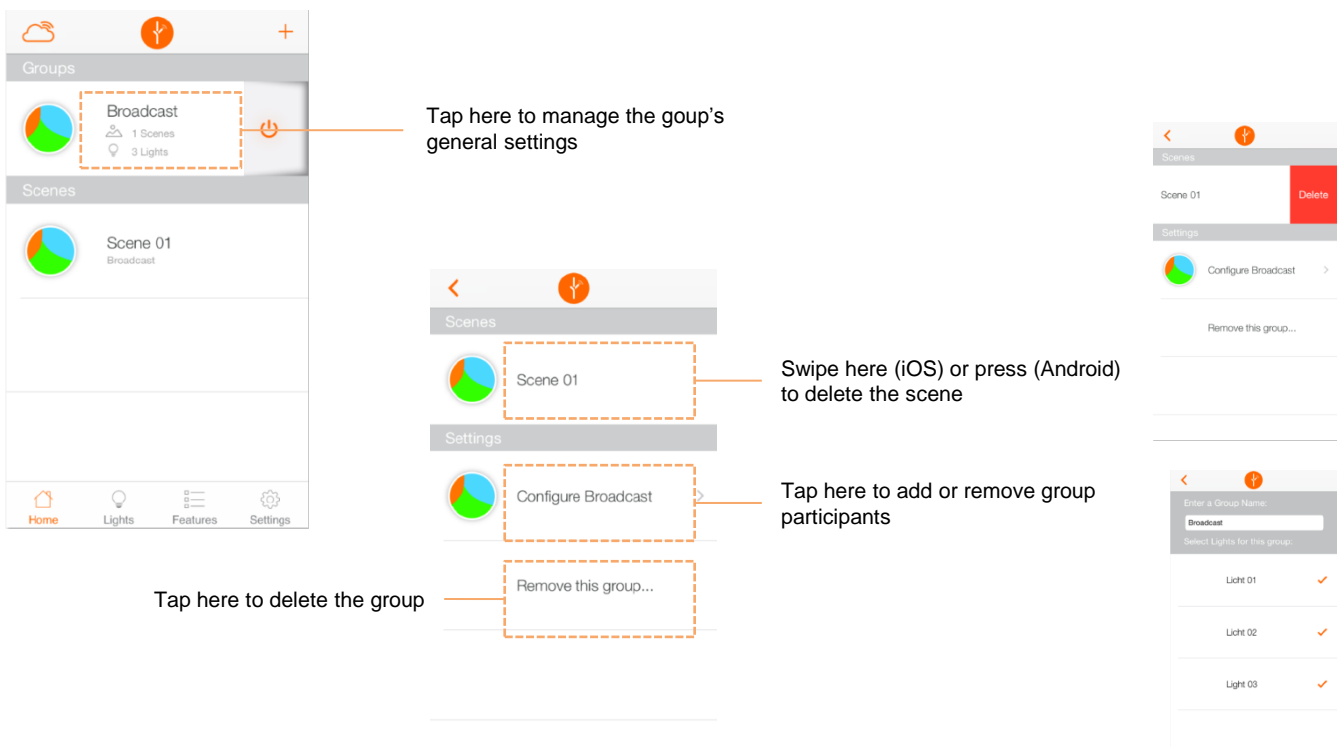
Open the group to which you want to add the scene.

Tap here to change the settings of the entire group (colour, colour temperature, dimming level)

Tap on the group participants to change the settings individually (colour, colour temperature, dimming level). The selected one is marked orange.



Manage group and delete scenes





Light is OSRAM

Light

Standard settings, status overview, add or delete light

Connection status

Tap here to change the settings (colour, colour temperature, dimming level)

Tap here to add a new light

Swipe here (iOS) or press (Android) to delete the light

Switch On or Off (including status)

Tapping on the symbols recalls the respective menu item – the active one is marked orange

Light Control

Back to "Lights"

Start colour loop

Switch On or Off (including status)

Tapping on the symbols recalls the respective menu item – the active one is marked orange.

Choose "Light Control"

Tap here to rename Licht 01

Tap here to add colour to Favorites

Dimming

Choose between warm- and cool white**

Change colour*

* Only for RGB products available
 ** Only for products with Tunable White functionality

Light is OSRAM

Light

Add product

Tap here to add new light

continue

continue

Presets

Recall the Relax-Mode

Recall the Active-Mode

Recall the Plant Light-Mode – this mode is only available for RGB products.

Tapping on the symbols recalls the respective menu item – the active one is marked orange.

Choose "Presets"

Light is OSRAM

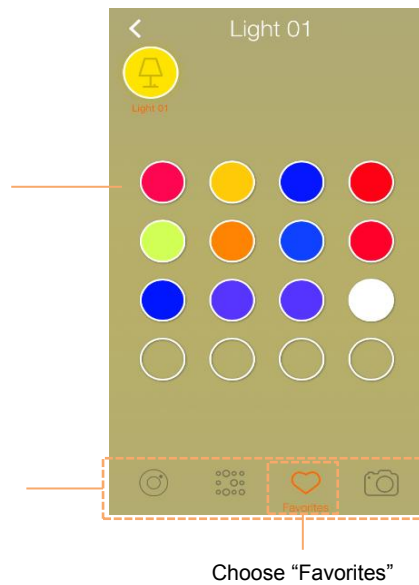


Light

Favorites

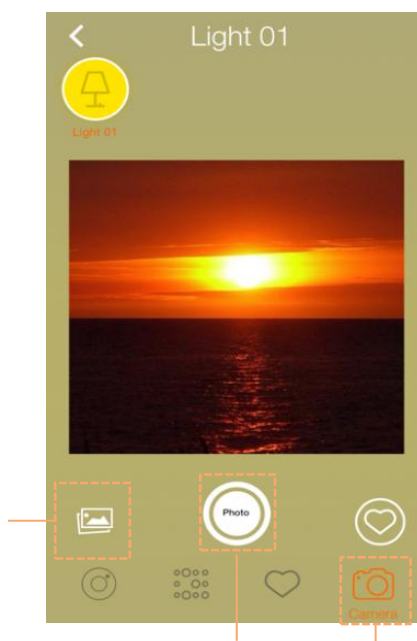
Tap on the Favorite you wish to recall

Tapping on the symbols recalls the respective menu item – the active one is marked orange.



Camera

Choose one of your own photos – for this feature you need to allow access when prompted



Take a picture Choose "Camera"



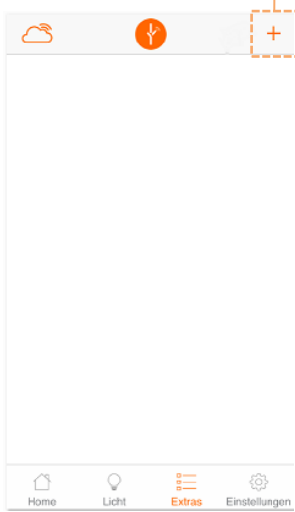
Choose the desired colour with the colour picker Tap here to save colour to Favorites

Light is OSRAM

Extras

Scheduler

Tap here to add a new Scheduler



Tap here to save Scheduler

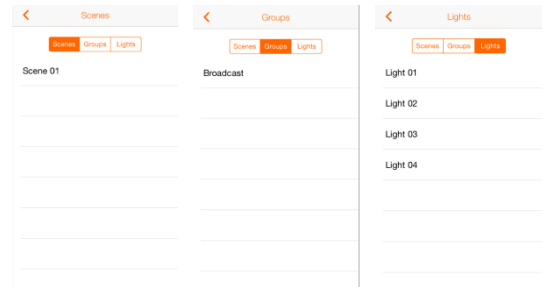
Tap here to define start time

Tap here to define end time

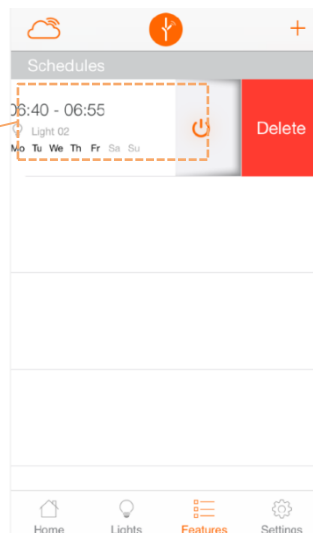


Here you can choose the day where the Scheduler is activated. The selected days are marked orange.

Here you can choose the scene, group or light to which the Scheduler should be applied to.



Swipe here right to left (iOS) or press and hold (Android) to delete the Scheduler



Light is OSRAM



Settings

General information, profile- and system settings

The main settings menu is divided into sections: Info, User, and System. The 'About' screen provides details on the app's version, imprint, and contact information.

Menu Item	Description
About	Version number, Imprint and Terms of Use
Help	Link to FAQs
Acknowledgements	Acknowledgements
Account	Account Information
General Settings	General Settings (1) e.g. choose time zone
System Update	Available System Updates (2)
System Reset	Reset System to factory new (3)
Delete Preferences	Delete groups & scenes or Favorites (4)
Logout	Logout

(1) **General Settings**

- Time Zone: Casablanca, Dublin, Lisbon, London GMT
- Day Light Saving: Follow DST changes

(2) **System Update**

Updates Available

Classic A60 RGBW
 Current Version : 16909063
 New Version : 16909072 Upgrade

(3) **System Reset**

By resetting the system you will loose all your data including the saved lights, gateway information and other profile data.

Please note that you cannot undo this step.

Cancel Reset

(4) **Delete Preferences**

- Delete all saved groups and scenes
- Delete all saved favorites

Cancel Delete