

# Haier®

## Range Hood

---

## Extractor de Aire

---

## Hotte de Cuisiniere

User Manual Model  
3000/4000 Series

---

Guide de l'Utilisateur  
3000/4000 Series

---

Manual del Usuario Modelo  
3000/4000 Series

SMARTER LIFE

BETTER PLANET

## SAFETY PRECAUTIONS

**Warning! To reduce the risk of fire, electric shock, or injury to persons, always exercise basic safety precautions, including the following:**

1. Read all instructions before using the appliance.
2. Use this appliance only for its intended purpose as described in this user manual.
3. Do not use any accessories not recommended by the manufacturer.
4. This unit must be grounded.
5. This appliance is not intended for commercial use.
6. Installation work and electrical wiring must be done by qualified technicians in accordance with all applicable codes and standards, including fire-rated construction.
7. Sufficient air is needed for proper exhausting of gases of fuel burning equipment through the flue (chimney) to prevent back drafting. Follow the heating equipment manufacturer's guideline and safety standards such as those published by the National Fire Protection Association (NFPA), and the American Society for Heating, Refrigeration and Air Conditioning Engineers (ASHRAE), and local code authorities.
8. When replacing an existing range hood with your new Haier Range Hood, turn OFF the electrical power to the existing unit before removal.
9. Before servicing or cleaning the unit, turn the power OFF at the service panel and if possible, lock the service panel to prevent power from being switched on accidentally. When the service disconnecting cannot be locked, securely fasten a prominent warning device, such as a tag, to the service panel.
10. Do not repair or replace any part of the appliance or attempt any servicing.  
**Note:** If for any reason this product requires service, we strongly recommend that a certified technician perform the service.
11. When cutting or drilling into wall or ceiling, be careful not to damage existing electrical wiring and other hidden utilities.
12. Ducted fans must always be vented to the outdoors.

### **To reduce the risk of range top grease fires:**

1. Always turn the hood ON when cooking at high heat or when cooking flaming foods.
2. Never leave cooking unattended at high settings. Boil overs cause smoking and greasy spill overs that may ignite. Heat oils slowly on low or medium settings.
3. Use proper-sized pans that correspond to the size of the stove and the amount of food being cooked.
4. Clean ventilation fans frequently. Do not allow grease to accumulate on the fan or the filter.

## To reduce the risk of personal injury in the event of a range top grease fire:

1. NEVER pick up a flaming pan, as you may be injured.
2. DO NOT use water, including wet dishcloths or towels, to put out a fire. A violent steam explosion may result.
3. Smother flames with a close-fitting lid, metal tray, or cookie sheet. Then turn OFF the burner. BE CAREFUL TO AVOID BURNS! If the flames are not put out immediately, evacuate and call the fire department.
4. Use an extinguisher only if:
  - a) You know that you have a Class ABC extinguisher and you already know how to use it.
  - b) The fire is small and contained in the area where it started.
  - c) The fire department is being called.
  - d) You can fight the fire with your back to an exit.

## CAUTION!

### Important – Observe all governing codes and ordinances.

1. For general ventilation use only. Do not use this appliance to exhaust hazardous or explosive materials and vapors.
2. To reduce the risk of fire, use only metal ductwork.
3. To avoid damage to motor or other components, keep drywall spray, construction dust, etc. off the power unit.
4. Please read specification label on product for further information and requirements.

## SAVE THESE INSTRUCTIONS for Future Use

Thank you for using our Haier product. This easy-to-use manual will guide you in getting the best performance from your Haier Range Hood.

Remember to record the model and serial number. They are on a label in the range hood.

---

Model number

---

Serial number

---

Date of purchase

Staple your receipt to your manual.

**You will need it to obtain warranty service.**

# Table Of Contents

PAGE

Safety Precautions .....	1
Accessories .....	3
Installation Preparation .....	4
Cabinet Preparation for Hoods Support .....	5
Selecting Venting Direction .....	6
Preparing Electrical Connections .....	7
Blower Installation .....	8
Preparing Duct Connections .....	8
Installing Ductwork .....	9
Hood Installation .....	9
Operating the Range Hood .....	10
Use and Care .....	13
Troubleshooting .....	14
Warranty Information .....	15

## Accessories

### Range Hood Accessories Provided:

1 Range Hood	2 Wire Connectors
1 Damper Flap	2 Aluminum Filters
4 Damper Screws	2 HEPA or Charcoal Filters*
4 Range Hood Wood Screws	1 User Manual
4 Washers	

\*LHV4330 models come with HEPA filters. 3000 series models come with Charcoal filters

Check to make sure that all parts and accessories are present and in good condition. If you find that they are not in good condition or are missing, please contact our customer service department for assistance.

**Our Toll-Free number is 1-877-337-3639.**

# Installation Preparation

To install this range hood, you will need the following tools and materials:

**Note: This procedure will require 2 people for easier installation.**

## Tools Needed for Installation

- Drill
- 1/8" Drill bit for drilling pilot holes
- 1-1/4" Wood bit for drilling electrical wiring access hole
- Phillips head screwdriver
- Flat-head screwdriver
- Pliers
- Pencil, ruler and level for marking range hood location
- Hand saw or jig saw for cutting the wall or cabinet openings
- Hi-Temp duct tape
- Electrical tape
- Connector Clamp

## General Preparation

**Caution!** Please be sure to turn the electrical power switch OFF before beginning the installation.

1. Remove the range hood from the carton.
2. Lay the range hood upside down on a table covered with either cardboard or paper to prevent scratching the hood or table.
3. If you have a 4000 series model, install two (2) 8-watt, 8W-PAR20 LED lights. If you have 3000 series model, install two (2) 50-watt, halogen lights.
4. Remove the 2 aluminum filters from the hood. Place them somewhere safe so they will not be damaged
5. Remove the range hood's bottom cover by removing the 2 screws holding it in place. Put the cover somewhere safe so that it will not be damaged and save the screws
6. Turn the hood right side up so you can see the duct knockouts and mounting holes.

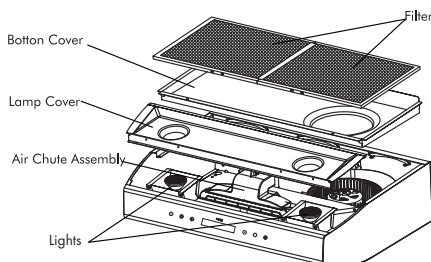


fig. 1

## Cabinet Preparation for Hood Support

Mount the hood so that the bottom of the hood is between 24"-30" above the cooktop.

**Warning!** When cutting or drilling into wall or cabinet, be careful not to cut existing electrical wiring.

1. If the bottom of the cabinet is recessed above the bottom of the cabinet door, then it is necessary to install wood strips on each side of the recessed area on the bottom of the cabinet where the range hood will be mounted. The wood strips should line up with the 4 keyhole slots on the top of the range hood. Fasten the wood strips with wood screws about 3" from each end.

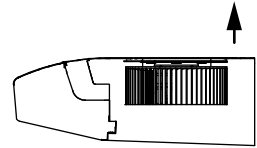
**Note:** The thickness of the wood strips should be slightly more than the recessed dimension. The length should be cut to size.

2. Measure and mark the electrical wiring opening in the wall or the cabinet. If the hood is to be vented, also mark and measure the duct opening in the wall or cabinet.

## Selecting the Venting Direction

The range hood blower is currently oriented for a ductless installation, but can also be configured to vent outside your home using either a horizontal or vertical venting configuration. Your range hood is supplied with a 3-1/4" x 10" damper frame for a transition piece from the hood to the ducting. Below is a brief ducting installation description. Your installation will depend on whether there is existing ducting or if there is need to install a ducting run. For the best performance, use the shortest possible ducting path and the least amount of elbows when discharging horizontally or vertically.

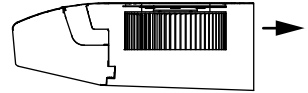
**Vertical Discharge** – Vertical discharge is the most common method of hood installation. If your kitchen has an attic space above, the ducting may be run through the cupboard and the attic to a roof cap. Use a 7" round duct (not included).



**Vertical**

The following is another option for this configuration. If your kitchen has a soffit above the cabinet, it can be used to run the duct up into the soffit and then discharge the air horizontally through the outside wall to a wall cap.

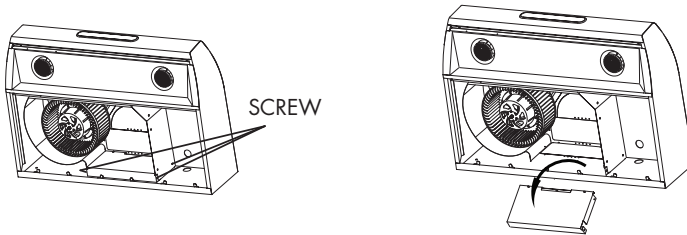
**Horizontal Discharge** - If the range is located against an outside wall, then horizontal discharging is ideal, provided there are no obstructions such as wall joists or places where openings are difficult to make.



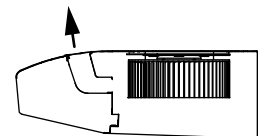
**Horizontal**

If a wall cap is used directly off the back of the hood, special care must be taken to ensure that the damper in the damper/duct connector on the hood and the damper in the wall cap do not interfere with each other when the range hood is operating. This could result in either inadequate air delivery or back drafts. If this condition exists, remove the hood damper flap. Sometimes when using a wall cap, it is easier to duct vertically and then to use an elbow.

In this mode, please unscrew the 3 screws (as shown), then remove the baffle and save it for use later.



**Ductless** – For ductless installations, air is vented back into the kitchen through the opening in the range hood grill. If you do not anticipate heavy cooking, this method may be preferable. Ductless installation requires the use of charcoal or HEPA\* filters (included) to remove odors, which should be replaced at regular intervals depending on use. Check with your local retailer or dealer for replacements.



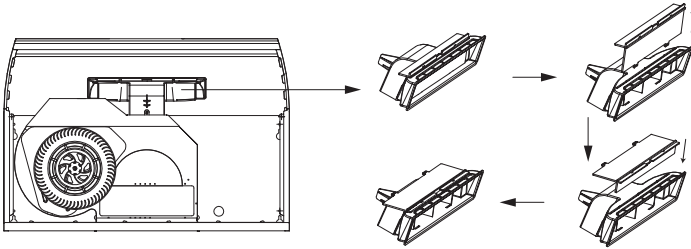
**Ductless**

**Note:** This filter is not dishwasher safe!

\*HEPA filtration is not available on all models. Please contact Haier at 1-877-337-3639 for information on where to purchase replacement filters.

## If you are using a ductless configuration, skip this step.

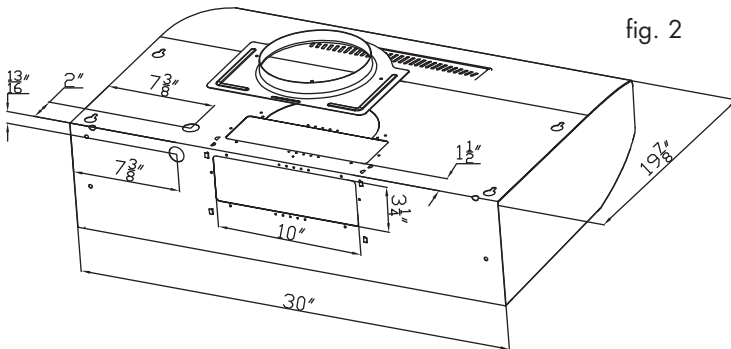
In "Vertical Discharge" or "Horizontal Discharge" mode, please reinsert baffle into air chute (as shown)



## Preparation of Electrical Connections

**Note:** If replacing an existing hood, the electrical cable may need to be re-routed to the desired position.

1. Determine the location of the electrical cable that will connect to the range hood (Fig.2). The preferred location for the electrical connector, vertical or horizontal, will depend on the existing installation or ease of routing wiring. All electrical connections must comply with local and national codes. Transfer the location of the selected range hood knockouts to the bottom of the cupboard or onto the wall, then cut or drill a hole to allow for clearance of the electrical cable clamp. Be careful not to cut into any hidden utilities, such as electrical wires.



2. Once you have planned your ducting and electrical installation, remove the appropriate electrical knockouts on the back or top of the range hood, attach the damper frame and install a standard electrical cable clamp.



## Preparation for Duct Connection

1. Remove the appropriate ducting knockout by inserting a screwdriver under one end and prying it up. Then snip or break the attachment points.

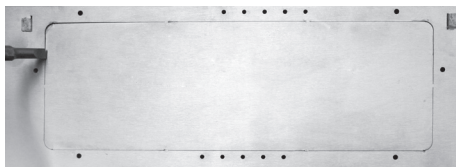


fig. 3

2. Install the damper assembly to the range hood with the 4 screws supplied.
3. If discharge is vertical through a rectangular duct, remove the knockout in section B only.
4. If the vertical discharge is through a 7" round duct, remove knockout sections "A" and "B".

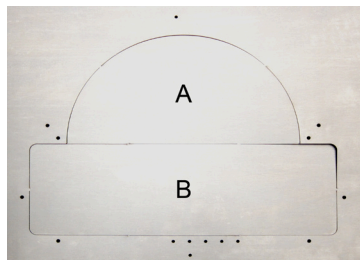


fig. 4

5. Mount the round collar over the opening on the hood by using 2 shorter screws. Allow the bottom edge of the 7" duct to be inserted into the collar.

## Installing Ductwork

Your new Haier range hood will operate at the highest efficiency if the number of elbows and the length of the duct are kept to a minimum. Also, ensure the back draft damper flap is attached to the damper frame assembly, which is supplied with the hood, does not impede airflow significantly. This may be left in place even if you install a wall or roof cap with another back draft damper.

## Hood Installation

1. Lift the hood into position and guide the electrical cable through the electrical cable clamp on the hood.
2. Insert the 4 wood screws from the bottom and securely fasten.
3. Secure the electrical cable in the cable clamp while allowing sufficient length in the hood to connect the field wires to the hood wires.
4. Make the electrical connections using screw-on wire connectors. Connect the black wires together then the white wires, followed by the green or bare wire to the green grounding screw in the hood. Replace the bottom cover.

**Caution!** All wiring installation must comply with local and national electrical code regulations.

5. Attach ductwork and use Hi-Temp duct tape to seal all joints.
6. After turning all range hood switches to the OFF position, turn the power ON and test your unit.

## Operating the Range Hood

4000 series model (For 3000 series models, see next section.)



### Light Settings

Press the **"on/off"** button to turn on lights. Once lights are turned on, there are three light settings from which to select. Use **"-" or "+"** buttons to set lights to desired brightness level.

Press the "on/off" button a second time will turn off lights.

### Fan Speed Settings

Your new Haier range hood comes equipped with 3 different fan speeds: **"low", "med", or "high"**. To turn on the fan, simply press the button corresponding to the desired fan speed. Each fan speed button has a light above the button that will illuminate to indicate the fan speed that has been selected.

To turn off the fan, press the button corresponding to the speed the fan is currently running (press the button under the light that is illuminated).

### Auto-off function

Pressing **"auto-off"** while the fan is on activates the auto-off function. You can select 15 or 30 minutes as the auto-off time. Pressing **"auto-off"** button one time will illuminate the left-most indicator light above the button to show that the 15 minute auto-off time has been selected. Pressing **"auto-off"** again selects the 30 minute auto-off time and will turn on the second indicator light. A third press cancels the auto-off function.

## Heat Sensor

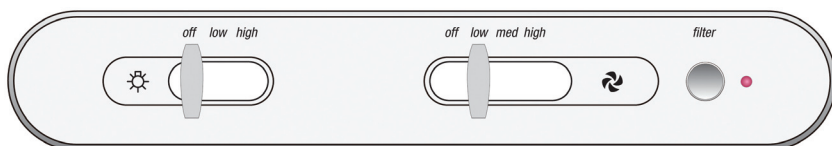
This unit is equipped with a Heat Sensor that automatically turns off the fan if a certain temperature is reached from cooktop heat.

The fan will go up to high speed until the temperature comes back down to a normal temperature level. Once the normal temperature has been reached, the unit will return to the previous setting before the heat sensor was activated.

## Filter change signal reset

If the filter change signal is on, press and hold **"filter"** for 3 seconds to reset once the filter has been changed.

3000 series models (For 4000 series model, see previous section.)



### Light Settings

There are 2 light settings available, **“low”** and **“high”**. To turn on, simply position the slider to the desired brightness level.

To turn off the light, move slider back to the **“off”** position.

### Fan Speed Settings

Your new Haier range hood comes equipped with 3 different fan speeds: **“low”**, **“med”**, or **“high”**. To turn on the fan, simply position the slider below the desired fan speed.

To turn off the fan, move slider back to the **“off”** position.

### Filter Change Signal Reset

If the filter change signal is on, press **“filter”** to reset once the filter has been changed.

## Use and Care

### Aluminum Filter

For highest efficiency, this filter should be removed and cleaned periodically. Soak the filter in hot water and mild soap or detergent. Rinse thoroughly and repeat if necessary. Heavy grease buildup may not be cleaned easily, thus the filter may need to be replaced.

**Hint:** It is recommended to clean the aluminum filter every time the filter change signal is activated.

### HEPA/Charcoal Filter

This filter should be changed when the filter change signal is activated. This filter cannot be cleaned and must be replaced when it becomes saturated. Contact Haier at 1-877-337-3639 or check with your local retailer or dealer to purchase replacement filters. See prior section for instructions on how to reset the filter change signal for your specific model.

### Light Bulbs

The 4000 series model specifies an 8W-PAR20 LED, but halogen or incandescent bulbs that meet specifications can be used on all models.

### Exterior Surface

Wipe the range hood exterior with a soft cloth and a mild detergent suitable for painted surfaces. Do NOT use abrasive materials such as steel wool pads or scouring powders.

### Repair or Replacement Parts

**Warning!** Disconnect range hood from the electrical power supply before servicing.

All parts may be obtained from service centers authorized by Haier, or may be ordered directly from Haier. When ordering parts, please specify the range hood model number on the rating label, which is located on the inside of the range hood.

# Troubleshooting

## **Fan does not turn on, but lights turn on.**

This is probably due to either a defective fan switch or a burned-out fan motor. Please call a qualified service professional.

## **Fan only runs at one speed.**

Please see instructions above for troubleshooting when your fan does not turn on, but lights turn on.

## **Fan circulates air, but does not vent outside.**

If air is blowing through the front vent openings, then your range hood has been configured for ductless operation. In order to convert the system to vent outside, a technician must install metal ductwork from the range hood through either an outside wall or the roof and ensure blower has been positioned correctly for your ventilation configuration.

If air is not blowing from the front vent openings, check inside the cabinet above the range hood. If you see a metal duct leading away from the vent hood, then you have a system that vents to the outdoors. If you do not see a duct, your unit may be venting through the back wall.

## **Lights do not turn, on but fan does.**

This could be due to a burned out bulb. Try replacing the light bulb. If the light still does not work, please call a qualified service professional.

## **Night light does not turn on.**

If your unit is using an LED bulb, it must be dimmable for the night light to function. If LED is dimmable, please see above instructions for troubleshooting when the lights do not turn on but fan turns on.

**Hint:** All LED bulbs are not dimmable. Consult the packaging or local retailer for help selecting the correct bulb.

## **Neither the fan nor the lights turn on at all.**

Check for a tripped circuit breaker or a blown fuse, since the range hood is wired directly to your household electrical system.

**NOTE:** All work must be performed by a qualified and licensed technician!

# Limited Warranty

## **This warranty covers all defects in workmanship or materials for:**

The mechanical and electrical parts (including labor costs) contained in this Haier product, for a period of 12 months, from the date of purchase (commercial or rental applications will be warranted for 90 days).

## **You must keep and be able to provide your original sales receipt as proof of the date of purchase.**

### **Who is covered?**

The original retail purchaser of this Haier product.

### **What will be done?**

Haier will repair or replace, in your home, any mechanical or electrical part which proves defective in normal household use for a period of 12 months.

### **How can you get service?**

1. Contact your nearest Haier authorized Service Center. For the name of the Service Center nearest you, contact Haier at (877) 337-3639.
2. All service must be performed by an authorized Haier Service Center.

## **THIS WARRANTY COVERS UNITS WITHIN THE CONTINENTAL UNITED STATES, CANADA AND PUERTO RICO. THIS WARRANTY DOES NOT COVER:**

- Damages from improper installation
- Damages from shipping
- Damages from misuse, abuse, accident, alteration, lack of proper care and maintenance
- Damages from service by persons other than an authorized dealer or service center
- Labor, service, transportation and shipping charges for the removal of defective parts and for installation of a replacement part, beyond the initial 12-month period.

THIS LIMITED WARRANTY IS GIVEN IN LIEU OF ALL OTHER WARRANTIES, EXPRESSED OR IMPLIED, INCLUDING THE WARRANTIES OF MERCHANTABILITY AND FITNESS FOR A PARTICULAR PURPOSE.

The remedy provided in this warranty is exclusive and is granted in lieu of all other remedies. This warranty does not cover incidental or consequential damages. Some states do not allow the exclusion of incidental or consequential damages, so this limitation may not apply to you. Some states do not allow limitations on how long an implied warranty lasts, so this limitation may not apply to you. This warranty gives you specific legal rights, and you may also have other rights, which vary from state to state.



# **IMPORTANT**

**Do Not Return This Product To The Store**

If you have a problem with this product, please contact the  
"Customer Satisfaction Center" at 1-877-337-3639.

**DATED PROOF OF PURCHASE REQUIRED FOR WARRANTY SERVICE**

# **IMPORTANT**

**Ne pas Réexpédier ce Produit au Magasin**

Pour tout problème concernant ce produit, veuillez contacter le service des  
consommateurs 'Customer Satisfaction Center' au 1-877-337-3639.

**UNE PREUVE D'ACHAT DATEE EST REQUISE POUR BENEFICIER DE LA GARANTIE.**

# **IMPORTANTE**

**No regrese este producto a la tienda**

Si tiene algún problema con este producto, por favor contacte el "Centro de Servicio al  
Consumidor" al 1-877-337-3639 (Válido solo en E.U.A).

**NECESITA UNA PRUEBA DE COMPRA FECHADA PARA EL SERVICIO DE LA GARANTIA**

**115V, 60 Hz**

**Made in China  
Fabriqué en Chine  
Hecho en China**

# **Haier®**

**Haier  
New York, NY 10018**

**Printed in China**