

## Quick Start

- 1. Remove battery.**  
Fully charge before use.
- 2. Open the Ring app and select Set Up a Device.**  
Then follow the in-app instructions.
- 3. Scan this code.**  
This identifies your Ring device to make setup fast and easy.

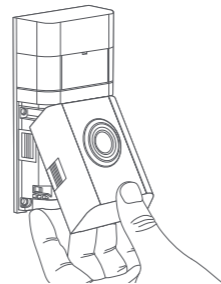


### Included installation hardware.

- Bag A Hardware**
- (5) Short Mounting Screws  
To mount Ring Doorbell directly to a wall
  - (5) Wall Anchors  
To install on concrete, stucco, or brick
- 
- Bag B Hardware**
- (2) Security Screws  
To secure Ring Doorbell after installation
- 
- Corner Mount Hardware**
- (5) Short Bracket Screws  
To mount Ring Doorbell to the corner mount
  - (3) Medium Bracket Screws  
To secure the corner mount to a wall
  - (3) Wall Anchors  
To install on concrete, stucco, or brick
- 
- Bag D Hardware**
- (2) Wire Nuts
  - (2) Wire Extenders

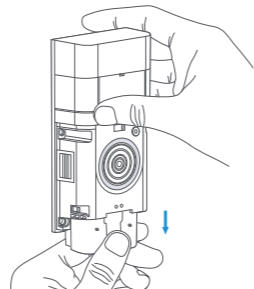
### Remove the faceplate.

Firmly grasp the bottom of the faceplate and pull to remove.



### Take out the battery.

Press the metal tab in and slide the battery out.

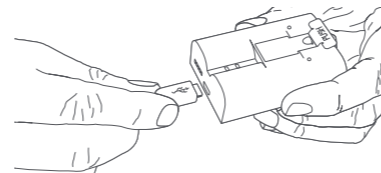


### Charge the battery.

Fully charge the battery by plugging it into a power source using the provided orange cable.

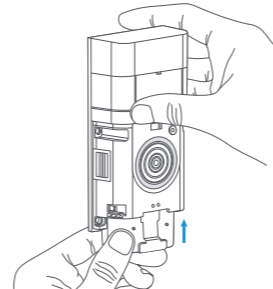
The red light will turn off once it's fully charged.

Charging Charged



### Insert the battery.

After charging, insert the battery in the bottom of your Ring Doorbell until it clicks into place.



### Download the Ring app.

The Ring app walks you through setting up and managing your Ring Doorbell.

Search for "Ring" in one of the app stores below, or visit [ring.com/app](http://ring.com/app)



### Do you have an in-home chime?

The chime can ring when the button on your Ring Doorbell is pressed. To set this up, just follow the instructions in the app.

### Don't have an in-home chime?

If you see the "No In-Home Chime" button during setup, be sure to press it.

**NO IN-HOME CHIME**

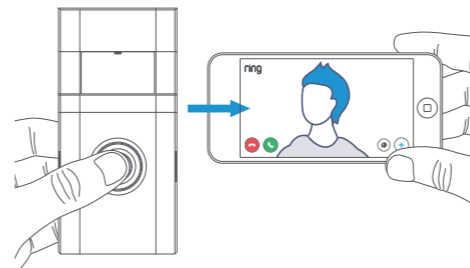
Consider purchasing a Ring Chime or Ring Chime Pro, which allows you to hear alerts from anywhere in your home. Learn more at [ring.com](http://ring.com)

### Set up your Ring Doorbell near your wifi router.

In the Ring app, select **Set Up a Device** and follow the in-app instructions.

### Try it out.

After setup, push the button on the front of your Ring Doorbell to see video from the camera in the Ring app.

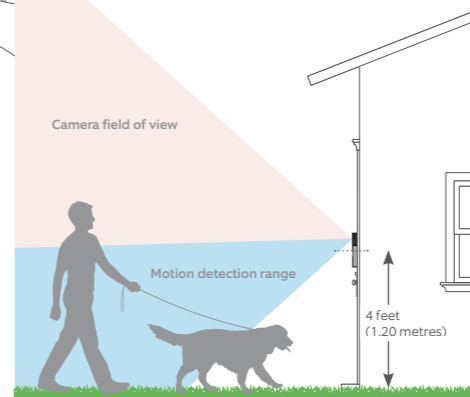


**i** If you have problems with video quality after installation, you may need to move your router closer to your door, or add a Ring Chime Pro. Learn more at: [ring.com/chime-pro](http://ring.com/chime-pro)

### Install your Ring Doorbell.

For the best results, mount it around four feet (1.20 meters) above the ground.

If you're connecting to existing doorbell wiring that's higher than four feet and want to angle your Ring Doorbell down for a better view, you can purchase a Wedge Kit online at [ring.com/accessories](http://ring.com/accessories).

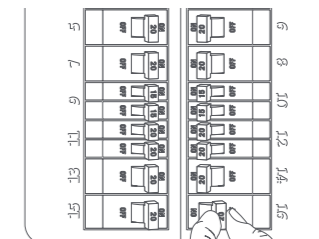


### Optional: Remove your existing doorbell.

If connecting to existing doorbell wires, shut off power at the breaker. If you're not sure which breaker controls your doorbell, turn off the master breaker for your home, or contact an electrician.

Once power is turned off, remove the doorbell button from the wall and disconnect the wires.

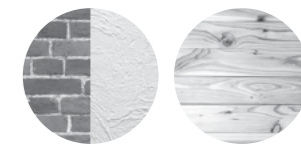
Your Ring Doorbell is compatible with doorbell systems supplying 8–24 volts AC at 50 or 60Hz, 40VA max.



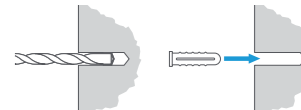
**CAUTION!** You'll be working with electrical wires during the install process. If you are uncomfortable or inexperienced with doing so, consult with a licensed electrician. Do not wire your Ring Doorbell to a DC-powered intercom system or other DC power source.

### Optional: Install the wall anchors.

You'll need to install wall anchors when installing on stucco, brick, or concrete (skip ahead to page 12 if installing on wood). We sent you two sets of wall anchors. Let's figure out which ones you'll need, and how to install them.



If installing directly to your wall, grab 4 of the wall anchors from Bag A. Using your Ring Doorbell as a template, mark 4 drill holes on the wall. Use a 1/4" masonry drill bit (not included) to drill the holes, then insert the 4 wall anchors.



### Optional: Install the wall anchors. (continued)

If you're using the Corner Mount, grab 2 of the wall anchors from Bag C. Using your Corner Mount as a template, mark 2 drill holes on the wall. Use a 1/4" masonry drill bit (not included) to drill the holes, then insert the 2 wall anchors.

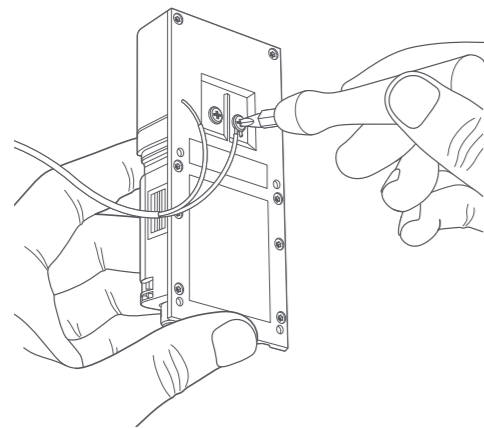


Wall Anchors

### Optional: Secure the wires to the terminals.

To connect your existing doorbell wires, loop one doorbell wire around each of the screw terminals on the rear of your Ring Doorbell then tighten to secure. It doesn't matter which wire connects to which screw.

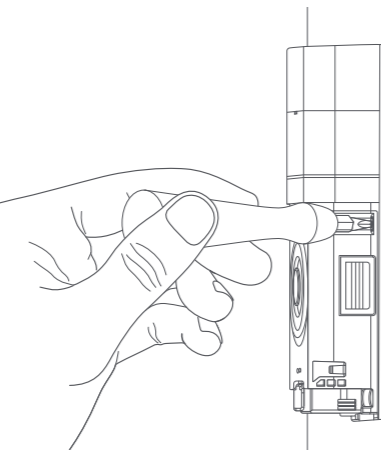
If your doorbell wires are too short to reach your Ring Doorbell, you can attach the included wire extenders using the included wire nuts.



### Secure your Ring Doorbell.

If you connected to existing doorbell wires, feed all the wires (and the wire nuts and extenders, if you used them) into your wall before securing your Ring Doorbell.

If mounting directly to the wall, use 4 of the provided Short Mounting Screws from Bag A to secure your Ring Doorbell directly to the wall.

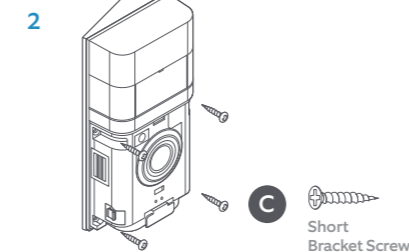
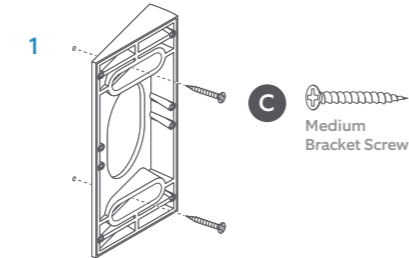


Short Mounting Screw

### Secure your Ring Doorbell. (continued)

If using the Corner Mount, use 2 of the Medium Bracket Screws from Bag C to secure the Corner Mount to the wall, then use 2 of the Short Bracket Screws from Bag C to secure your Ring Doorbell to the Corner Mount.

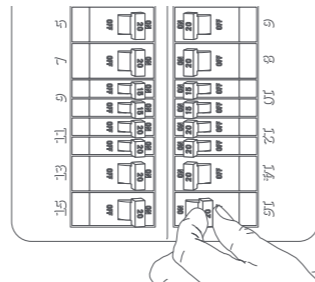
The Corner Mount can be painted to match your home.



Short Bracket Screw

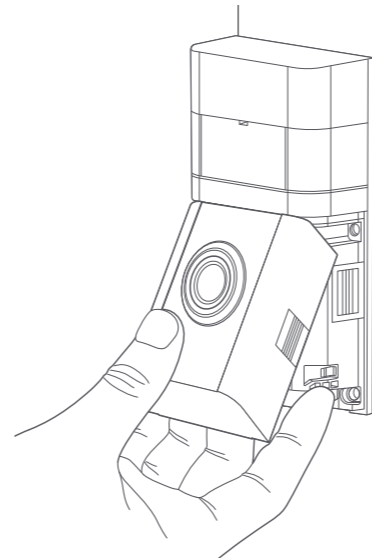
### Optional: Restore power at the breaker.

If you connected to existing doorbell wires, turn power back on at the breaker.



### Optional: Restore power at the breaker.

Place the faceplate on your Ring Doorbell by slotting it in at the top and clicking it into place.



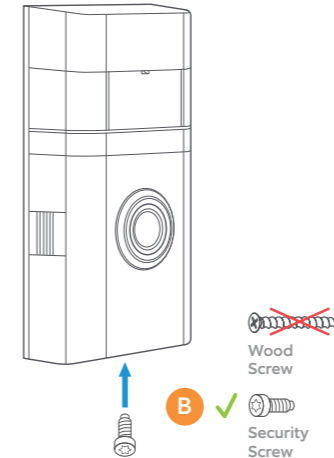
### Optional: Restore power at the breaker.

**CAUTION!** If you use the wrong screws to secure the faceplate, you could damage the battery during installation, create a fire hazard, and be seriously injured.

DO NOT USE any screw other than the included short security screws when securing the faceplate.

Lastly, use the included screwdriver to insert and tighten one of the Security Screws from Bag B.

Your Ring Doorbell is now ready to use.



Wood Screw

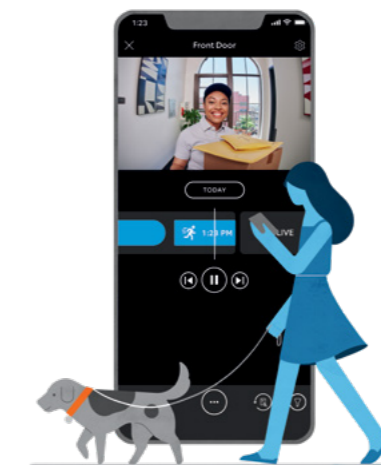


Security Screw

### Optional: Restore power at the breaker.

Place the faceplate on your Ring Doorbell by slotting it in at the top and clicking it into place.

Your new device comes with a free 30-day trial of our Ring Protect video recording service. To continue your subscription and save your videos, please visit [ring.com/protect-plans](https://ring.com/protect-plans)



### Optional: Restore power at the breaker.

Review, share and download. Your new device comes with a free 30-day trial of our Ring Protect video recording service. To continue your subscription and save your videos, please visit [ring.com/protect-plans](https://ring.com/protect-plans)

### What is Ring Protect?

Ring Protect is a subscription service that stores videos from your Ring devices. Ring lets you interact with visitors and monitor your property in real time, while Ring Protect allows you review and share those videos anytime.

### How much does it cost?

Ring Protect starts at \$3 USD/month or \$30 USD/year per Ring doorbell or camera.\*

### How do I sign up?

Simply log into your Ring account at [ring.com/protect-plans](https://ring.com/protect-plans), and follow the on-screen instructions.

\*\$4 AUD, \$4.50 NZD, \$5 CAD per month or \$40 AUD, \$45 NZD, \$50 CAD per year



For additional help, visit [ring.com/help](https://ring.com/help)

Or give us a call

[US 1 800 656 1918](tel:18006561918)

[Canada 1 855 300 7289](tel:18553007289)

[Worldwide +1 310 929 7085](tel:+13109297085)

For a list of all our customer support numbers, visit [ring.com/callus](https://ring.com/callus)

For information on our warranty, theft protection, and Ring Protect Plans, see [ring.com/legal](https://ring.com/legal)

© 2021 Ring LLC or its affiliates. Ring and all related marks are trademarks of Ring LLC or its affiliates.