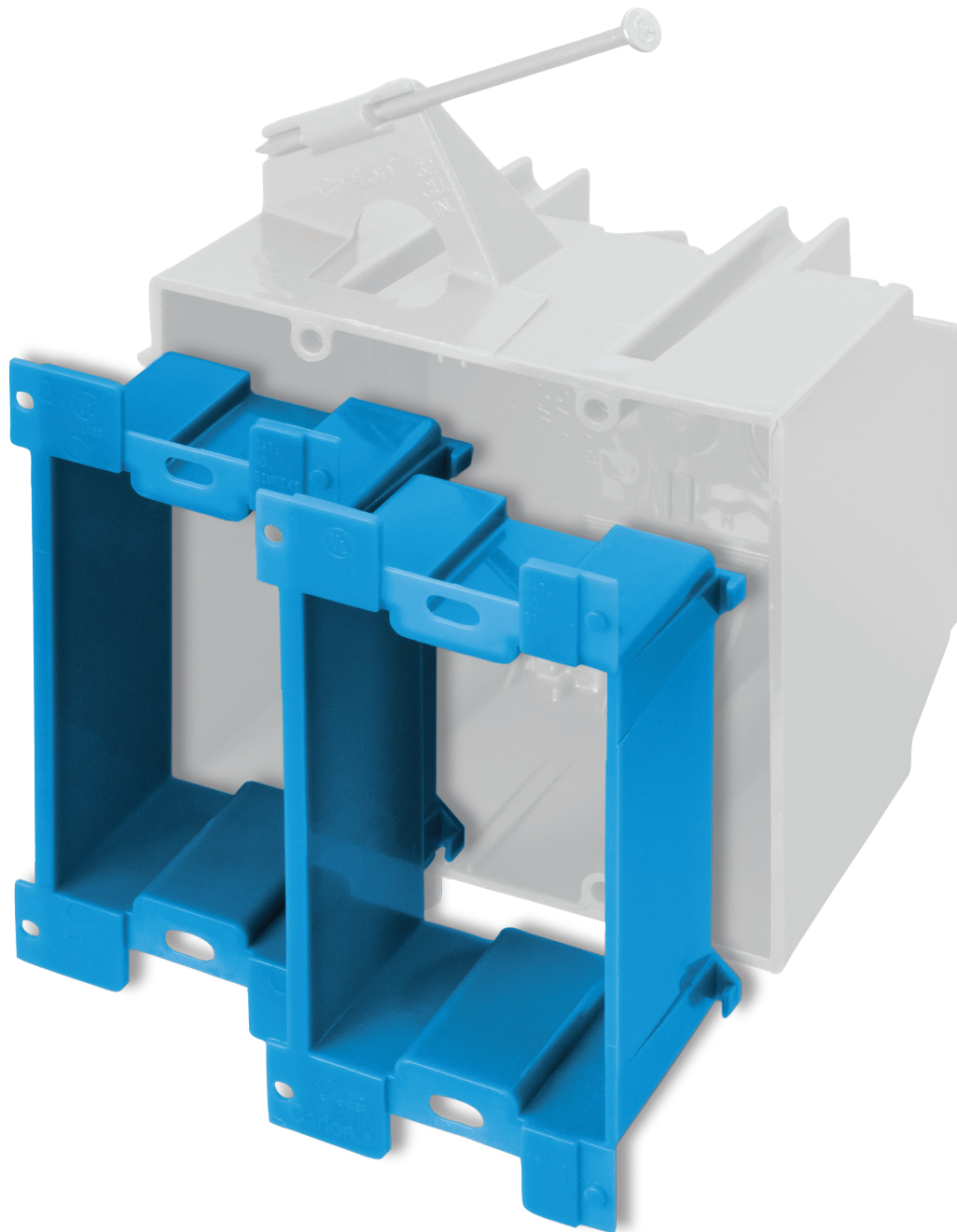
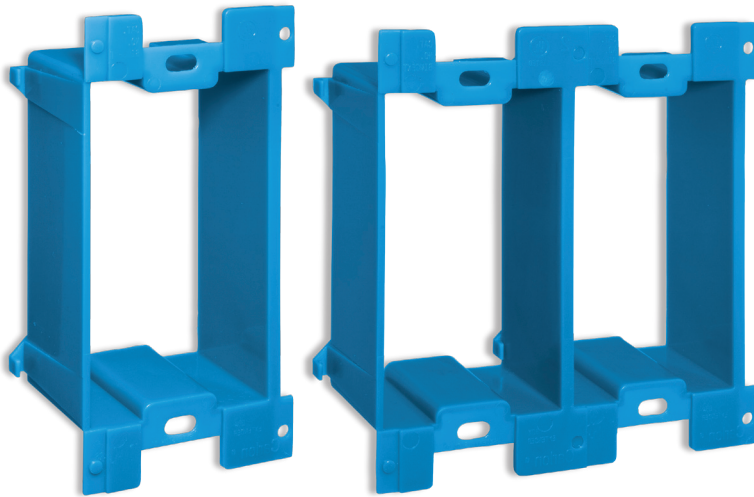


**NON-METALLIC SINGLE- OR
MULTI-GANG BOX EXTENDER**

Carlon®



Thomas & Betts
A Member of the ABB Group

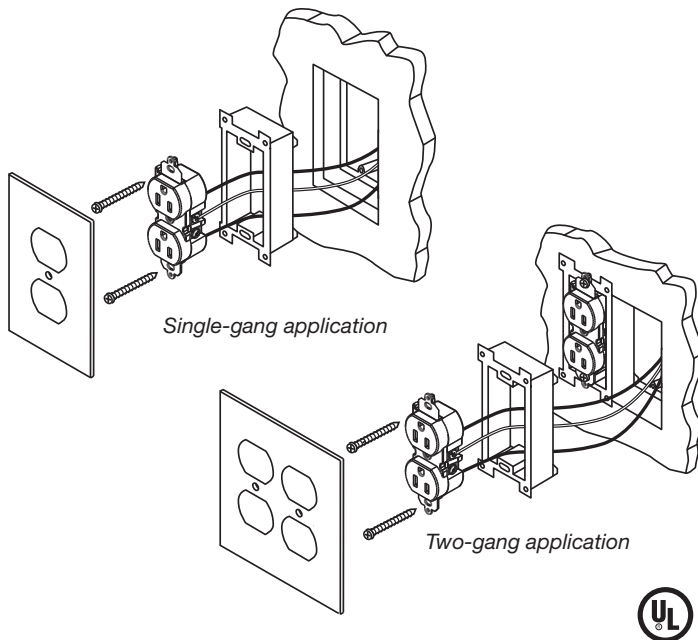


Non-Metallic Single- or Multi-Gang Box Extender

Use One Extender with Single-Gang Boxes — Or Snap Two or More Extenders Together for Multi-Gang Boxes!

Use one extender for a single-gang box.

For multi-gang applications, simply snap multiple extenders together.



Single-gang application

Two-gang application

Carlton® Non-Metallic Single- or Multi-Gang Box Extender

Cat. Number	Description	Std. Pkg. Qty.	Std. Ctn. Qty.	UPC Number
B1MGEXT-2	Non-Metallic Box Extender	2	10	034481-01209

NEC and National Electrical Code are registered trademarks of the National Fire Protection Association, Inc.

The Carlton® Non-Metallic Single- or Multi-Gang Box Extender is designed to correct a common problem that arises during remodeling — providing a flush finish for electrical boxes that are installed too deep in the wall. What's more, it also addresses multi-gang extension, a problem that previously called for expensive and hard-to-find multi-gang extenders.

The Carlton® Non-Metallic Single- or Multi-Gang Box Extender provides a one-piece solution that can be used on a single-gang box or combined together for multi-gang applications, so installers in the field will always have the right size extender at hand.

- Extends electrical box set too deep in the wall — ideal for remodeling projects
- Innovative design simplifies installation — no trimming required
- Adjustable mounting depth with maximum extension of 1" provides installation flexibility
- Single solution for single- and multi-gang extension eliminates the need to stock multiple SKUs
- Works with most non-metallic single- and multi-gang wiring boxes and devices
- Ships with two #6–32 x 1¼" screws per extender
- UL® Listed; NEC® Article 370-20 compliant

Please ask your Thomas & Betts sales representative for a complete catalog of quality Thomas & Betts electrical products or visit us at www.tnb.com. For customer service, call 1-800-816-7809. For technical questions, call 1-888-862-3289.

© 2013 Thomas & Betts Corporation. All rights reserved. Printed in the U.S.A.
07/13/2M GM-7220

Thomas & Betts Corporation
Electrical Division
8155 T&B Boulevard
Memphis, TN 38125
901-252-5000
www.tnb.com

Thomas & Betts
A Member of the ABB Group