

7530 TOILET SEAL KIT BETTER THAN WAX™

WARNING



DO NOT USE IN-TANK DROP-IN TOILET BOWL CLEANERS CONTAINING BLEACH OR CHLORINE. Use of such products will: (1) RESULT IN DAMAGE to tank components and MAY CAUSE FLOODING and PROPERTY DAMAGE and (2) VOID FLUIDMASTER WARRANTY.

Fluidmaster Flush 'n Sparkle Toilet Bowl Cleaning System is recommended for those choosing to use in-tank bowl cleaners and WILL NOT VOID the FLUIDMASTER WARRANTY because it will not damage the components. DO NOT overtighten nuts or tank/bowl may crack. Always use quality Fluidmaster parts when installing or repairing. Fluidmaster will not be responsible or liable for use of non-Fluidmaster parts during installation or repair.

Limited 10 Year Express Warranty

For complete warranty details, please visit our website at www.fluidmaster.com

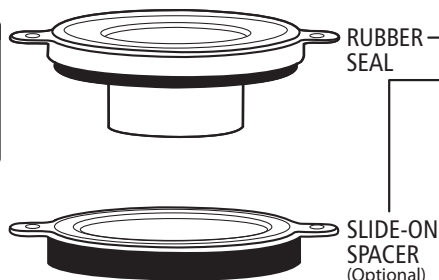
TOOLS NEEDED



Wrench



Ruler

Putty Knife
(Optional)Hack Saw
(Optional)

RUBBER SEAL

SLIDE-ON SPACER
(Optional)

PARTS IN THIS KIT:

- (1) Rubber Seal
- (1) Slide-on Spacer
- (2) Brass Bolts
- (2) Hex Nuts
- (2) Metal Washers
- (2) Plastic Washers

1

SCAN HERE!



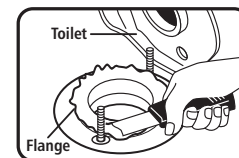
Before you begin, watch our installation video:
<http://opn.to/a/TG5QP>

PREPARATION

2

Prepare

Remove toilet. Clean flange and bottom of toilet by scraping off wax with putty knife and wiping clean. No wax residue should remain.



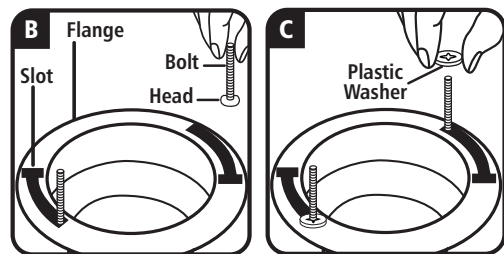
INSTALLATION

3 Remove and Install

A. Remove old bolts.

B. Install new bolts by placing bolt heads in flange slots. Slide to secure.

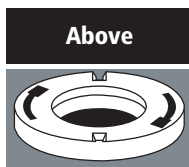
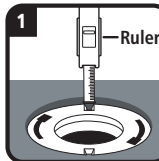
C. Slide plastic washers down to base of bolts to hold bolts upright for installation.



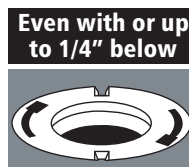
4 Determine Flange Height

1. Determine if flange is above, even with, or below floor. If flange is below floor, use ruler to determine flange depth.

2. Proceed to corresponding step for your flange height.



Proceed to
Step 5A.



Proceed to
Step 5B.



Proceed to
Step 5C.

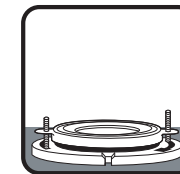
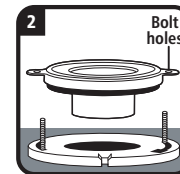
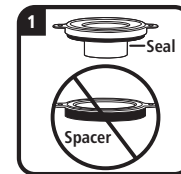
5 Rubber Seal Installation

5A. Flange Above Floor

1. Remove spacer from seal. Spacer will not be used for above floor installs and can be discarded.

2. Install seal over flange by sliding bolt holes over bolts.

3. Proceed to Step 6.



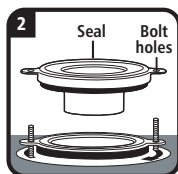
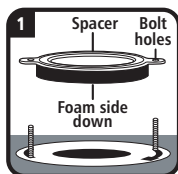
5B. Flange Even With or Up To 1/4" Below Floor

1. Install spacer over flange by sliding bolt holes over bolts.

IMPORTANT- Foam side of spacer must face down as pictured or leaks may occur.

2. Install seal on top of spacer by sliding bolt holes over bolts.

3. Proceed to Step 6.



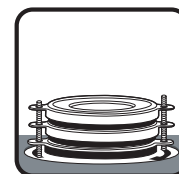
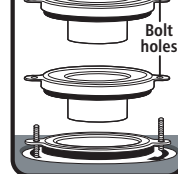
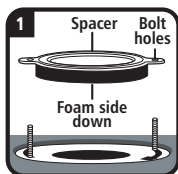
5C. Flange More Than 1/4" Below Floor

(For a flange depth greater than 3/4" a flange extender is required)

1. Install spacer over flange by sliding bolt holes over bolts. **IMPORTANT- Foam side of spacer must face down as pictured or leaks may occur.**

2. Install two seals (2nd seal purchased separately) on top of spacer by sliding bolt holes over bolts.

3. Proceed to Step 6.



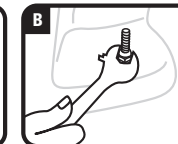
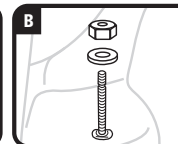
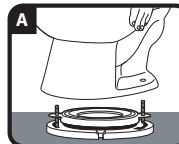
6 Toilet Install

A. Position toilet over seal, guiding holes in toilet base over bolts.

Note: Toilet can be repositioned on seal, if needed, unlike traditional wax rings.

B. Install metal washers & hex nuts. Apply downward pressure to bowl while tightening hex nuts (alternate sides while tightening).

Caution: Do not overtighten; bowl or flange may crack. May need to cut bolts with hacksaw to replace toilet bolt caps.



7 Check

Flush toilet and check for leaks.



If questions or concerns please call Fluidmaster at 1-800-631-2011

M-F 5:30am - 5:00 pm (PST)