

# Pet Hair Eraser<sup>®</sup>

## Cyclonic Bagless Canister

USER'S GUIDE  
66T6 SERIES



- 3 Safety Instructions
- 4 Product View
- 5 Assembly
- 6-8 Operations
- 9-12 Maintenance and Care
- 13 Troubleshooting
- 14 Consumer Services
- 15 Replacement Parts
- 16 Warranty

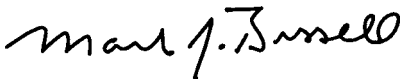
## Thanks for buying a BISSELL Pet Hair Eraser® Cyclonic Bagless Canister Vacuum

We're glad you purchased a BISSELL Pet Hair Eraser Cyclonic Bagless canister vacuum. Everything we know about floor care went into the design and construction of this complete, high-tech home cleaning system.

Your BISSELL canister vacuum is well made, and we back it with a limited one year warranty. We also stand behind it with a knowledgeable, dedicated Consumer Services department, so, should you ever have a problem, you'll receive fast, considerate assistance.

My great-grandfather invented the floor sweeper in 1876. Today, BISSELL is a global leader in the design, manufacture, and service of high quality homecare products like your BISSELL canister vacuum .

Thanks again, from all of us at BISSELL.



**Mark J. Bissell**  
**President and Chief Executive Officer**

# IMPORTANT SAFETY INSTRUCTIONS

When using an electrical appliance, basic precautions should be observed, including the following:

## READ ALL INSTRUCTIONS BEFORE USING YOUR CANISTER VACUUM.

Always connect to a polarized outlet (left slot is wider than right). Unplug from outlet when not in use and before conducting maintenance.

### **WARNING:** To reduce the risk of fire, electric shock, or injury:

- Do not leave cleaner when it is plugged in.
- Unplug from outlet when not in use and before servicing.
- Do not use with damaged cord or plug.
- To unplug grasp plug not cord.
- Do not pull or carry by cord, use cord as a handle, close door on cord, pull cord around sharp corners, run cleaner over cord, or expose cord to heated surfaces.
- Hold plug when rewinding the cord onto the reel. Do not allow the plug to whip when rewinding.
- Do not use cleaner if it has been dropped, damaged, left outdoors or dropped into water. Have it repaired at an Authorized Service Center.
- Do not allow children to use as a toy.
- Do not use outdoors or on wet surfaces.
- Do not handle cleaner or plug with wet hands.
- Do not put any object into openings, use with blocked opening, or restrict air flow.
- Do not use without dust bag and/or filters in place.
- Do not allow hair, loose clothing, fingers or body parts to get near openings or floor brush in the appliance.
- Do not pick up hot coals, cigarette butts, matches or any hot, smoking, or burning objects.
- Do not pick up hard or sharp objects such as glass, nails, screws, coins, etc.
- Do not pick up flammable or combustible materials (lighter fluid, gasoline, kerosene, etc.) or use in the presence of explosive liquids or vapor.
- Do not unplug by pulling on cord.

- Do not pick up toxic material (chlorine bleach, ammonia, drain cleaner, etc.).
- Do not use in an enclosed space filled with vapors given off by oil base paint, paint thinner, some moth proofing substances, flammable dust, or other explosive or toxic vapors.
- Do not use for any purpose other than described in this User's Guide.
- Always turn off this appliance before connecting or disconnecting vacuum hose.
- Use only manufacturer's recommended attachments.
- Use only on dry, indoor surfaces.
- Keep openings free of dust, lint, hair, etc.
- Keep appliance on a level surface.
- Turn off all controls before plugging or unplugging cleaner.
- Be extra careful when cleaning stairs.
- Close attention is necessary when used by or near children.

## SAVE THESE INSTRUCTIONS FOR FUTURE USE

## THIS APPLIANCE HAS A POLARIZED PLUG.

To reduce the risk of electric shock, this appliance has a polarized plug (one blade is wider than the other). This plug will fit in a polarized outlet only one way. If the plug does not fit fully in the outlet, reverse the plug. If it still does not fit, contact a qualified electrician to install a proper outlet. Do not change the plug in any way.

This model is for household use only.

# Product view



**⚠ CAUTION:**  
 Do not plug in your vacuum until you are familiar with all instructions and operating procedures.



## Assembling your vacuum

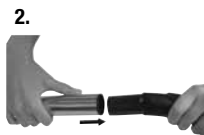
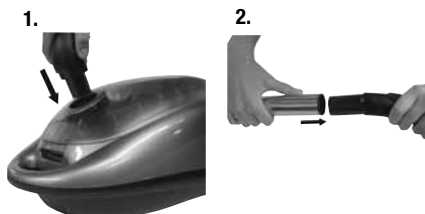
1. Connect swivel hose by squeezing both locking buttons and inserting it into the suction opening on the canister. Once the swivel hose is inserted in the suction opening, release the locking buttons.
2. Connect telescoping extension wand to the handle end of the flex hose. Twist slightly to tighten.
3. Connect Pet Hair Eraser floor nozzle to the end of the telescoping extension wand. Twist slightly to tighten.
4. Once assembled, you can store your vacuum in one of two positions:

### A. Storing in the in-use position:

1. To store with the Pet Hair Eraser floor nozzle attached, insert the storage clip (located on the back of the floor nozzle) into the storage slot on the rear of the vacuum.
2. To store without the Pet Hair Eraser floor nozzle attached, insert the storage clip (located on the bottom of the telescoping extension wand) into the storage slot on the rear of the vacuum.

### B. Storing in the upright position:

1. To store with the Pet Hair Eraser floor nozzle attached, stand the vacuum in the upright position and insert the storage clip (located on the back of the floor nozzle) into the storage slot on the bottom of the vacuum.
2. To store without the Pet Hair Eraser floor nozzle attached, stand the vacuum in the upright position and insert the storage clip (located on the bottom of the telescoping extension wand) into the storage slot on the bottom of the vacuum.



### Storing in the in-use position



### Storing in the upright position



# Operations

## Power button

Turn the power on or off by pressing lightly downward on the power button (ⓘ).

## Power cord

The power cord is located at the rear of the vacuum. Gently pull out the power cord, watching for the yellow line. Stop pulling the power cord once the yellow line is visible. There is also a red line, which indicates the end of the usable cord. Do not pull the power cord out beyond the red line.

## Automatic cord rewind

Your vacuum is equipped with an automatic cord rewind. When cleaning is finished, press the power button OFF (ⓘ) and grasp the plug to disconnect from the electrical outlet. Hold the plug and press the automatic cord rewind button to rewind the cord automatically.



## **CAUTION:**

Be careful to avoid injury as cord retracts very quickly.



## **CAUTION:**

Before using your vacuum, make sure the dirt cup and all filters are in place. Do not operate your vacuum without the dirt cup or filters.

Power Button



# Operations

## Special tools

Your BISSELL Pet Hair Eraser Cyclonic Bagless Canister is not only a powerful carpet and rug vacuum cleaner, it's also a versatile bare floor vacuum cleaner and above floor vacuum cleaner when you select one of the special tools.

### Pet Tool Adapter:

The Pet Tool Adapter must be attached to the handle end of the flex hose to use the Pet Contour Tool and the Wide Pet TurboBrush. The narrow end of the adapter attaches to the handle end of the flex hose and the wide end of the adapter attaches to the pet tool of your choice. The adapter should fit snugly to the hose and pet tool without using excessive force.

### Pet Contour Tool:

Use to reach into corners and edges on stairs, as well as armrests and other curved surfaces. The tool can be flipped to use in any direction.

### Wide Pet TurboBrush:

Use rotating brush action for small, flat areas such as cushions and beds.

### Upholstery tool:

Use the upholstery tool to clean curtains, draperies, cushions and fabrics.

### Dusting brush attachment:

Attach the dusting brush attachment to the upholstery tool to dust furniture, blinds, books, lamps, shelves and baseboards.

### Crevice tool:

Use the crevice tool in tight, narrow spaces.

## Pet Hair Eraser Floor Nozzle

Use to pick up pet hair from rugs and carpeted surfaces. Just vacuum like you normally would. The Pet Hair Lifter will grab pet hair when you pull back and it will release the hair and suction it up when you push forward.

**NOTE:** Turn the vacuum off before you flip up or flip down the Pet Hair Lifter.

### Tip:

Before cleaning under low furniture, check area first for objects that might harm the unit or block the hose.



### Tip:

Hair, string and small objects can block the hose and tools. Check them occasionally for obstructions.

### Tip:


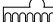
Use the air flow regulator to reduce air flow as needed when using the tools to clean items such as draperies or curtains.

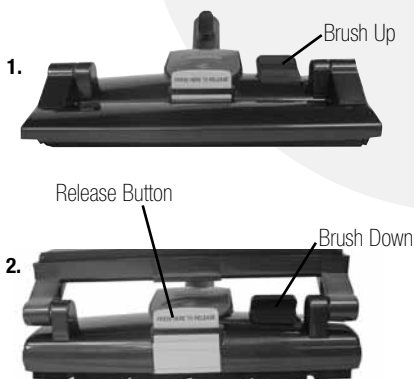
## NOTICE:

These tools are designed to remove pet hair from upholstered or carpeted surfaces. They should not be used on pets.

# Operations

## Pet Hair Eraser Floor Nozzle continued

1. To vacuum rugs and carpeted surfaces, flip down the Pet Hair Lifter until it clicks into place on the front of the Pet Hair Eraser Floor Nozzle. Then push the brush switch to the carpet position  to pull the brushes up into the Pet Hair Eraser Floor Nozzle.
2. To vacuum bare floors, push the brush switch to the bare floor position  to extend the brushes down from the Pet Hair Eraser Floor Nozzle. Then flip up the Pet Hair Lifter by pushing the yellow release button. This will flip the Pet Hair Lifter up and out of the way.



## Variable suction power control

The variable suction power control is located on the back of the vacuum. Turn the control toward the larger dots for maximum suction. Turn the control toward the smaller dots to minimize suction for lightly soiled areas or delicate fabrics.



## Air flow regulator

Open the air flow regulator by sliding the regulator back towards the handle to an open position to reduce suction for delicate fabrics.

Close the air flow regulator by sliding the regulator down to the closed position for full suction.



## Clean filter indicator

The clean filter indicator is located between the power button and the automatic cord rewind button. It will monitor your air flow and let you know when it is time to clean or replace your filters. If the indicator turns orange while you are vacuuming, your filters need to be cleaned or replaced. If the indicator remains orange, even after cleaning or replacing your filters, turn the vacuum off and check for a clog in the hose or tool.



**NOTE:** The indicator may turn orange when using the tools due to the restricted airflow. This does not necessarily mean that the filters need to be cleaned or replaced. If the indicator does not turn off once the tool is removed, check for a clog in the hose/tools or clean or replace your filters.

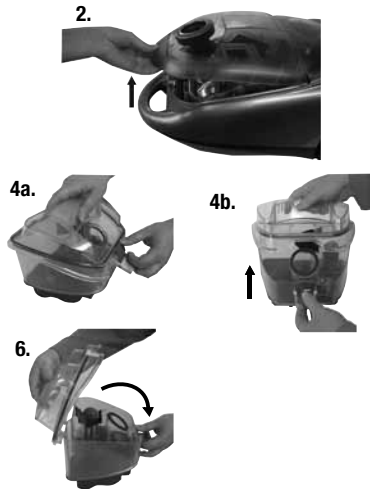


# Maintenance and care

## Emptying the dirt cup

1. Turn vacuum OFF (⓪) unplug the vacuum from electrical outlet.
2. Open the dirt cup compartment by lifting up the door latch on the front of the vacuum.
3. Lift the dirt cup assembly out from the vacuum.
4. Remove the top cover from the dirt cup assembly by unfastening the latch, raising the front edge and removing the top cover from the rear hinges. Set the top cover aside.
5. Empty the dirt into a garbage container.
6. To reattach the top cover on the dirt cup, align the slots on the top cover with the hinges on the dirt cup and rotate the front cover down to the closed position. Then fasten the latch.
7. Place the dirt cup back into the vacuum.
8. Close dirt cup compartment door and press down gently until it locks into place.

**NOTE: The compartment door will not close without the dirt cup in place.**



**WARNING:** To reduce the risk of electric shock, turn power switch OFF and disconnect plug from electrical outlet before performing maintenance or troubleshooting checks.

## Cleaning the pre-motor filter

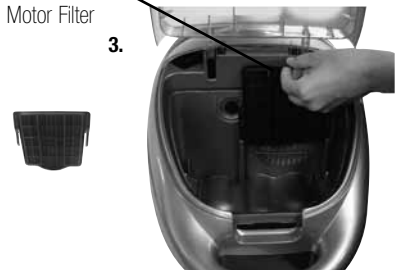
**The pre-motor filter protects the motor from dirt and dust particles.**

1. Turn vacuum OFF (⓪) unplug the vacuum from electrical outlet.
2. Open the dirt cup compartment by lifting up the door latch on the front of the vacuum.
3. Remove the filter frame from the filter holder by grasping the lip of the frame and pulling up.
4. Remove the filter from the filter frame and clean by hand washing in warm water. A mild detergent can be used if desired. Allow the filter to air dry completely before replacing.
5. Place the filter back into the filter frame and replace back into the filter holder.

**NOTE: The filter frame should be placed so the protective frame is visible.**

6. Replace the dirt cup back into the dirt cup compartment.
7. Close dirt cup compartment door and press down gently until it locks into place.

Washable Pre-Motor Filter



**WARNING:** Do not operate cleaner with damp or wet filters or without all filters in place.

*Tip:*

For maximum cleaning performance, check the filters often and clean or replace if necessary.

## Maintenance and care

### Replacing the post-motor HEPA media filter

The post-motor HEPA media filter assists in the filtration process to return clean air to the room.

1. Turn vacuum OFF (⓪) unplug the vacuum from electrical outlet.
2. Remove the filter door (located on the back of the vacuum) by pulling down on the filter door and pulling it toward you.
3. Remove the post-motor HEPA media filter by grasping the tabs of the filter frame and pulling out toward you.
4. Replace the post-motor HEPA media filter with a new filter.

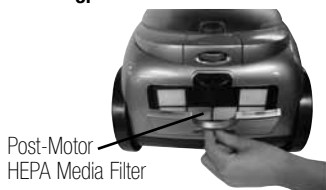
**NOTE: The post-motor filter is a white, pleated HEPA media filter. This filter is NOT washable and must be replaced when it becomes dirty.**

5. Replace the filter door by inserting the two tabs at the bottom of the filter door, pushing down on the bottom of the filter door and pushing it back into the vacuum. Be sure the top tabs are secured.

2.



3.



### Replacing the dirt cup HEPA media filter & cleaning the foam filter

**IMPORTANT: Make sure the dirt cup is empty before you replace or clean these filters.**

1. To remove the dirt cup HEPA filter, pull down on the front snap.
2. Remove and replace as necessary.

**NOTE: The dirt cup HEPA media filter is a white, pleated HEPA media filter. This filter is NOT washable and must be replaced when it becomes dirty.**

1.



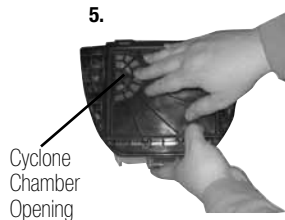
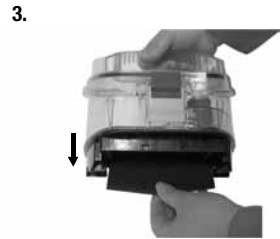
# Maintenance and care

## Replacing the dirt cup HEPA media & cleaning the foam filter continued

3. The dirt cup foam filter is located between the bottom of the dirt cup and the HEPA media filter. Once the HEPA media filter has been removed, the foam filter can then be removed and cleaned or replaced as needed. To clean the foam filter, wash with warm water and a mild detergent. Be sure to air dry completely before replacing this filter in the dirt cup.
4. To re-install the filters in the dirt cup, turn dirt cup upside down and replace the foam filter. Then replace the HEPA media filter by inserting the tabs on the back of the filter into the slots on the bottom of the dirt cup and snap the filter back into place.

## Clearing clogs from the dirt cup

1. To clear clogs from the dirt cup, remove the top cover and set aside.
2. Empty the dirt into a garbage container.
3. Reach down into the dirt cup cyclone chamber to clear any dirt or debris from the cyclone and empty into a garbage container.
4. Remove the dirt cup, HEPA media filter and foam filters; set aside.
5. Remove any dirt or debris from the cyclone chamber opening.
6. If the holes in the cyclone appear to be clogged, place the cyclone chamber opening underneath running water and allow water to run through the holes in the cyclone to clear any clogs. Be sure to allow the entire dirt cup assembly to dry completely before replacing the dirt cup HEPA media filter and foam filters.



# Maintenance and care

## **Maintaining the Wide Pet TurboBrush**

**The Wide Pet TurboBrush should be checked regularly for clogs or debris wrapping around the brush.**

1. Turn vacuum OFF (ⓐ) unplug the vacuum from electrical outlet.
2. If a clog is present or debris is visible, turn the collar on the neck of the Wide Pet TurboBrush counterclockwise to the unlocked position to remove the faceplate and clear any obstructions.
3. To clean debris from the brush, remove the brush from the drive belt and clean debris.
4. Reposition the drive belt on the brush. Place the ends of the brush in the slots on the sides. Reposition the faceplate and turn the collar clockwise to the locked position.



# Troubleshooting



## **WARNING:**

To reduce the risk of electric shock, turn power OFF and disconnect plug from electrical outlet before performing maintenance or troubleshooting.

### **Vacuum cleaner won't run**

#### **Possible causes**

1. Vacuum cleaner is not plugged in
2. Power button is not pressed down

#### **Remedies**

1. Check electrical plug
2. Press power button down

### **Vacuum cleaner won't pick up or low suction**

#### **Possible causes**

1. Tools, flex hose and/or telescoping extension wand are blocked
2. Filters are dirty
3. Dirt cup is full
4. Swivel hose not securely attached to suction opening
5. Crack or hole in flex hose
6. Air flow regulator or variable suction power control is set to open or minimum setting
7. Wide Pet TurboBrush is clogged or debris is wrapped around brush

#### **Remedies**

1. Remove each part and check for blockages
2. Check and clean or replace all filters
3. Empty dirt cup
4. Make sure swivel hose is locked into suction opening
5. Check hose and replace if needed
6. Change to closed or maximum setting
7. Check Wide Pet TurboBrush, see page 12

### **Visible dust escaping from vacuum**

#### **Possible causes**

1. Dirt cup is full
2. Filters missing or installed incorrectly
3. Filters are dirty
4. Flex hose is blocked
5. Swivel hose not securely attached to suction opening
6. Crack or hole in flex hose

#### **Remedies**

1. Empty dirt cup
2. Check all filters for correct installation
3. Check and clean or replace all filters
4. Remove hose and check for blockages
5. Make sure swivel hose is locked into suction opening
6. Check hose and replace if needed

**Other maintenance or service not included in the manual should be performed by an authorized service representative.**

**Thank you for selecting a BISSELL product.**

**Please do not return this product to the store.**

**For any questions or concerns, please contact BISSELL Consumer Services at 1-800-237-7691.**

## BISSELL Consumer Services

### BISSELL Consumer Services 1-800-237-7691

Monday - Friday 8 a.m. — 10 p.m. ET

Saturday 9 a.m. — 8 p.m. ET

Or write:

BISSELL Homecare, Inc.

PO Box 3606

Grand Rapids MI 49501

ATTN: Consumer Services

Or visit the BISSELL website - **[www.bissell.com](http://www.bissell.com)**

When contacting BISSELL, have model number of cleaner available.

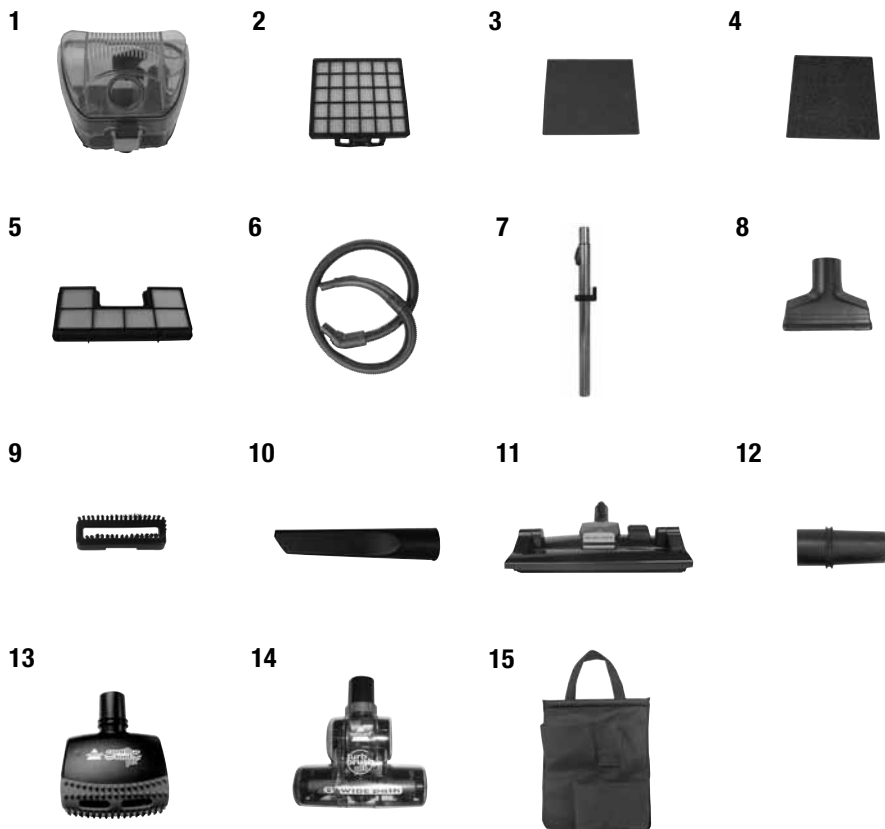
Please record your Model Number: \_\_\_\_\_

Please record your Purchase Date: \_\_\_\_\_

**NOTE: Please keep your original sales receipt. It provides proof of purchase date in the event of a warranty claim. See Warranty on page 16 for details.**

# Replacement parts - BISSELL Pet Hair Eraser Cyclonic Bagless Canister

Item	Part No.	Part Name
1	203-7289	Dirt Cup Assembly
2	203-7259	Dirt Cup HEPA Media Filter
3	203-7258	Dirt Cup Foam Filter
4	203-7260	Pre-Motor Filter
5	203-7261	Post-Motor HEPA Media Filter
6	203-7257	Flexible Hose with Handle
7	203-7256	Telescoping Extension Wand
8	203-7265	Upholstery Brush
9	203-7266	Dusting Brush Attachment
10	203-7264	Crevice Tool
11	203-7275	Pet Hair Eraser Floor Nozzle
12	203-7279	Pet Tool Adaptor
13	203-1291	Pet Contour Tool
14	203-1290	Wide Pet TurboBrush
15	203-7278	Accessory Bag



# Warranty - BISSELL Pet Hair Eraser Cyclonic Bagless Canister

This warranty gives you specific legal rights, and you may also have other rights which may vary from state to state. If you need additional instruction regarding this warranty or have questions regarding what it may cover, please contact BISSELL Consumer Services by E-mail, telephone, or regular mail as described below.

## Limited One Year Warranty

Subject to the **\*EXCEPTIONS AND EXCLUSIONS** identified below, upon receipt of the product BISSELL Homecare, Inc. will repair or replace (with new or remanufactured components or products), at BISSELL's option, free of charge from the date of purchase by the original purchaser, for one year any defective or malfunctioning part.

See information below on "If your BISSELL product should require service".

This warranty applies to product used for personal, and not commercial or rental service. This warranty does not apply to fans or routine maintenance components such as filters, belts, or brushes. Damage or malfunction caused by negligence, abuse, neglect, unauthorized repair, or any other use not in accordance with the User's Guide is not covered.

## If your BISSELL product should require service:

Contact BISSELL Consumer Services to locate a BISSELL Authorized Service Center in your area.

If you need information about repairs or replacement parts, or if you have questions about your warranty, contact BISSELL Consumer Services.

### Website or E-mail:

[www.bissell.com](http://www.bissell.com)

Use the "Customer Services" tab.

### Or Call:

BISSELL Consumer Services

1-800-237-7691

Monday - Friday 8 a.m. - 10 p.m. ET

Saturday 9 a.m. - 8 p.m. ET

### Or write:

BISSELL Homecare, Inc.

PO Box 3606

Grand Rapids MI 49501

ATTN: Consumer Services

BISSELL HOME CARE, INC. IS NOT LIABLE FOR INCIDENTAL OR CONSEQUENTIAL DAMAGES OF ANY NATURE ASSOCIATED WITH THE USE OF THIS PRODUCT. BISSELL'S LIABILITY WILL NOT EXCEED THE PURCHASE PRICE OF THE PRODUCT.

**Some states do not allow the exclusion or limitation of incidental or consequential damages, so the above limitation or exclusion may not apply to you.**

### \*EXCEPTIONS AND EXCLUSIONS FROM THE TERMS OF THE LIMITED WARRANTY

THIS WARRANTY IS EXCLUSIVE AND IN LIEU OF ANY OTHER WARRANTIES EITHER ORAL OR WRITTEN. ANY IMPLIED WARRANTIES WHICH MAY ARISE BY OPERATION OF LAW, INCLUDING THE IMPLIED WARRANTIES OF MERCHANTABILITY AND FITNESS FOR A PARTICULAR PURPOSE, ARE LIMITED TO THE ONE YEAR DURATION FROM THE DATE OF PURCHASE AS DESCRIBED ABOVE.

Some states do not allow limitations on how long an implied warranty lasts, so the above limitation may not apply to you.



©2009 BISSELL Homecare, Inc.  
Grand Rapids, Michigan  
All rights reserved. Printed in Korea  
Part Number 110-4125  
Rev 6/09  
Visit our website at:  
[www.bissell.com](http://www.bissell.com)

