

**150 Series™**

Patent Pending

**Vinyl  
Insulated  
Patio Pet Door**

**Installation  
Instructions**

**For: 78" – 86" – 94" Tall Door**



# Before You Get Started...

- It is important to read all instructions carefully and make sure you have all the parts listed below before you begin.
- Your pet door may be installed on the right or left side depending on which way your sliding door opens (see bottom of page 6).
- There are several lock styles for vinyl sliding doors. See page 4 to determine which lock you have.
- If you need help with any part of the installation, call one of our associates Toll Free at **(800) 378-4385** (M–F, 9 am to 4 pm, PST) and they will be happy to help you free of charge.

**TOOLS REQUIRED** – Pencil, Ruler, Tape Measure, Scissors, Power Screw Driver (Phillips Head), Hand Screw Driver (Phillips Head), Hacksaw and Utility Knife.

**WARNING: SCREWS PROVIDED ARE SELF-TAPPING, NO DRILLING REQUIRED. DO NOT USE DRILL BITS IN ANY PART OF THIS INSTALLATION.**

**In Pictures, Some Parts Shown In Black. Actual Parts May Be White.**

## PARTS LIST –

- 1. Hangers (2) with Screws (4) (POLY BAG #1)**  

- 2. Track Fillers (2) (POLY BAG #1)**  

- 3. Lock Catch (2) with Screws (4) (POLY BAG #2)**  

- 4. "H" Top Section (1) with Optional Slide Shims (2) & Screws (2)**  

- 5. Spacers (4) (POLY BAG #2)**  

- 6. Door Seal Extrusions (2) (78" long ea. pc.)**  

- 7. Draft•Stopper™ (1) Roll (78" long)**  

- 8. Lock Button Override (1) (see page 4) (POLY BAG #2)**  

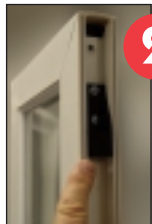
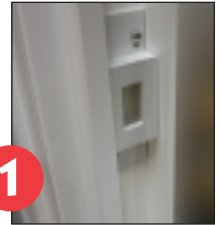

# Installing Your 150 Series™ V.I.P. Pet Door

## Step #1-Mounting Pet Door to Sliding Door Frame

### IMPORTANT: BEFORE YOU START YOUR INSTALLATION—

You must remove the existing Lock Catch plate from your sliding door frame as it will interfere with your new pet door. (see Picture #1)

1



2

Top Hanger



3

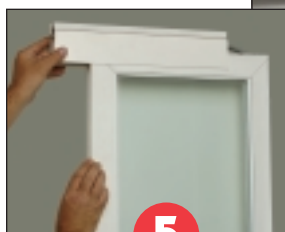
Bottom Hanger

**NOTE:** Your new pet door comes with two (top and bottom) Mounting Hangers attached. Please leave these Hangers in place. (see Pictures #2 and #3)

Poly Bag #1 contains two additional “Hangers” and four 1/4” Mounting Screws.

Place one of the “Hangers” on bottom rail as shown in Picture #4 and attach through PVC and frame using two of the screws.

4



5

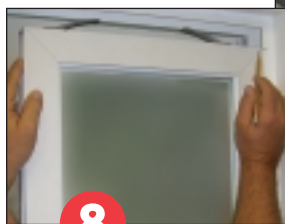
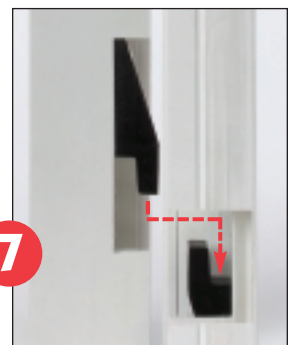


6

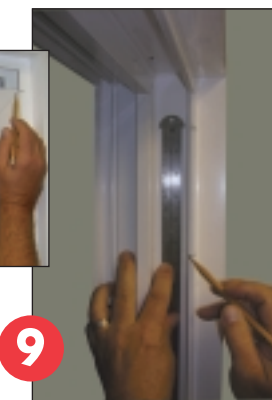
Carefully remove "H" Top Section from top of door. (see Picture #5) Place your pet door in position as shown. (see Picture #6). Make sure that the bottom Hanger on door is interlocked with Hanger on frame. (Picture #7)

**WARNING: SCREWS PROVIDED ARE SELF-TAPPING, NO DRILLING REQUIRED. DO NOT USE DRILL BITS IN ANY PART OF THIS INSTALLATION.**

7



8

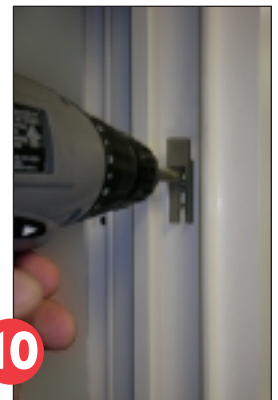


9

With pet door in place, mark a pencil line to correspond with top of door on edge of frame. (see Picture #8)

Remove pet door panel then measure down 5-1/4” and make a new pencil line, then transfer the line which is 5-1/4” down to the inside of frame. (see Picture #9) This new line indicates the bottom edge of the “Top” Hanger. Place top Hanger in frame and line up bottom edge with pencil line.

10



Using screws provided in Poly Bag #1, attach the hanger to the frame, keeping the hanger centered on frame (see Picture #10).



11

Place two Track Fillers underneath door (see Picture #11). Re-hang the V.I.P. Pet Door. Fit should be snug to keep pet door from moving in track.

# Continuing the Installation

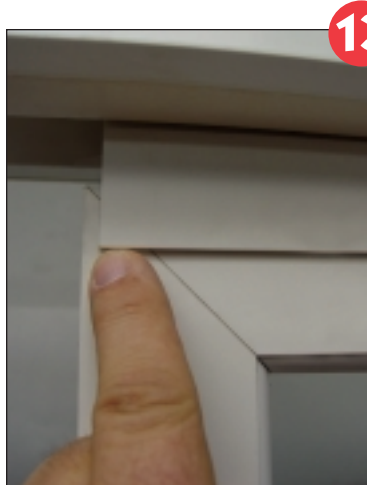
## Step #2-Adding "H" Section Filler

Slide "H" Section onto top of door over the springs. (see Picture #12)

**Important Note:** If your sliding glass door is 83" (6'-11") tall you may need one extra "H" Top Section. Call (800) 378-4385, this part will be shipped to you for a small shipping charge.



12



13

A gap of 1/4" must be left at sliding door-side area of filler section (see Picture #13) to clear the Door Seal Extrusion pieces.

**NOTE:** Some doors may require adjustment to the "H" Section. You may need to cut the "H" Section to the required length. Measure length at V.I.P. Door (see Picture #14) and cut with hacksaw. (see Picture #15)

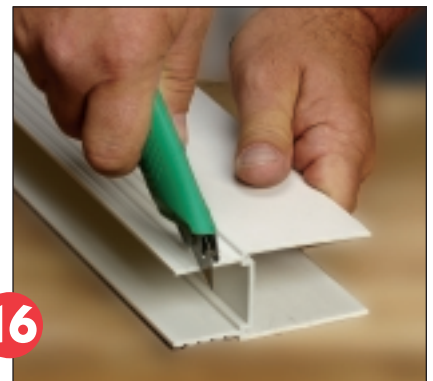


14



15

Adjustments to the "H" Section height may be made by cutting along desired groove with a utility knife. (see Picture #16)



16



17

**WARNING: SCREWS PROVIDED ARE SELF-TAPPING, NO DRILLING REQUIRED. DO NOT USE DRILL BITS IN ANY PART OF THIS INSTALLATION.**

After "H" Top Section is in place, secure "H" Top Section in door using two (3/16" x 5/8") screws provided in Poly Bag #2. This step is optional but will add structural stability and security. Place screws well away from glass, as shown in Picture #17.

# Continuing the Installation

## Step#3-Installing the Lock Catch

Our instructions will cover the majority of sliding door locks. If your door lock is not compatible with the enclosed lock components, you can use an alternate method of securing your door. Please call us Toll Free at (800) 378-4385 for more information.

If your lock looks like this...



Single Hook-Style Door Lock

...then place One Lock Catch like this.



If your lock looks like this...



Double Hook-Style Door Lock

...then place Two Lock Catches like this.



If your lock looks like this...



Double Hook Reverse-Style Door Lock

...then place Two Lock Catches like this.



If your sliding door lock has a small button below the latch hook...



18

...you will need to install the Lock Button Override.

Peel paper off the two-sided tape. Position pin to depress the lock button and press firmly in place. (see Picture #18)

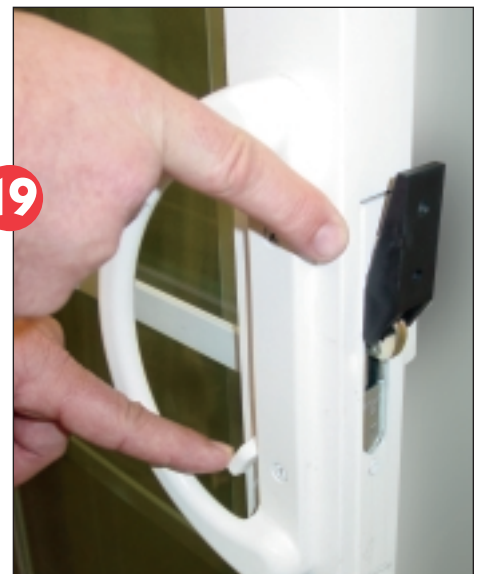
See next page to finish lock installation.



# Continuing the Installation

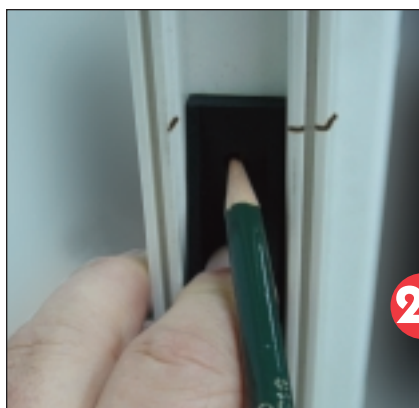
## Step #3-Installing the Lock Catch (continued)

Place Lock Catch onto your existing door lock hook in the up (locked) position. (see Picture #19)



Partially close your sliding door so that you can mark the location of the top edge of Lock Catch inside your pet door frame. (see Picture #20)

**WARNING: SCREWS PROVIDED ARE SELF-TAPPING, NO DRILLING REQUIRED. DO NOT USE DRILL BITS IN ANY PART OF THIS INSTALLATION.**



Open door, relocate Lock Catch to line up with pencil and mark holes (see Picture #21). Install Lock Catch using 1/4" self-tapping screws provided in Poly Bag #2. (see Picture #22) Use Spacer if needed. Lock Catch has slotted holes for adjustment if necessary.



If your sliding door has double hook-style lock, repeat steps for second hook.

**NOTE:** Most sliding doors have an adjustable locking mechanism (see Picture #23). To increase or decrease the locking strength of your door, turn Adjustment Screw in or out.



# Completing the Installation

## Step #4-Adding Door Seal and Draft•Stopper™

Your pet door includes two Seal Extrusions which mount into the slots on the side of the V.I.P. Pet Door panel. To properly measure for installation, close your sliding door against the pet door, measure length from top of slider to the bottom sill of door frame.

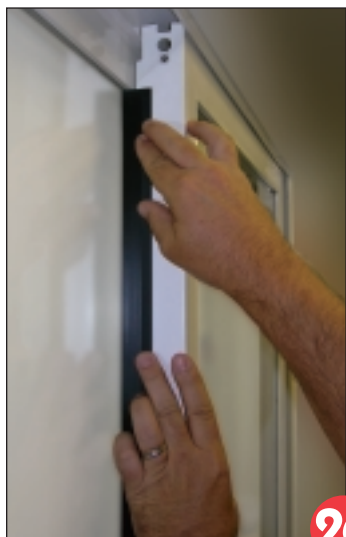


24

After measuring length, use a hacksaw to cut door Seal Extrusions to length (see Picture #24) and press into slots. (see Picture #25)



25



26

The Draft•Stopper™ attaches to the moving section of your sliding glass door. To install the Draft•Stopper™, measure the vertical distance, or height of exposed glass, between top and bottom frames of the sliding door. Cut Draft•Stopper™ to size with scissors using this length.

Starting at top, attach Draft•Stopper™ by aligning edge so that it rubs lightly against glass. (see Picture #26) Pull paper off tape and gently press in place while working slowly down the Draft•Stopper™. Do not press firmly in the event that repositioning is necessary.

**NOTE:** Be sure that vinyl rubs lightly against glass all the way down length of glass. Press Draft•Stopper™ firmly in place along entire length when you are satisfied it is correctly placed.

## Reversing Pet Door Frame

If your sliding door opens “Left-to-Right”, remove the “Ultra•Flex™” Pet Door Frame (see Picture #27) and reverse its position so Security Slide (see Picture #28) faces the inside of your home.



27



28

Security Slide

Ultra•Flex™  
Pet Door  
Frame  
Components