

### Features

- Compression molded from our exclusive solid Vikrell® material
- Integral apron with removable access panel
- Durable high-gloss finish
- 6 Jets
- 10-year consumer/3-year commercial limited warranty
- Optional three-piece wall set with generous storage shelves
- Pump with air switch and grounding-type plug-in cord
- 16" (40.6 cm) whirlpool bath depth (floor to top of threshold)
- 60-1/4" (153 cm) x 37-1/4" (94.6 cm) x 20" (50.8 cm) unit rough-in dimensions include nailing flange
- 60" (152.4 cm) x 36" (91.4 cm) x 19" (48.3 cm) complete unit finished dimensions include wainscot

### Codes/Standards Applicable

Specified model meets or exceeds the following:

- ASME A112.19.7M
- ANSI Z124.1.2
- HUD, UM Bulletin 73A
- ASTM E162
- ASTM E662
- UL 1795

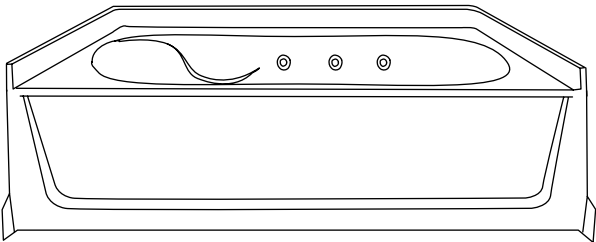
### Specified Model

Model	Description	Colors/Finishes	
76101110	36" (91.4 cm) whirlpool bath, left drain	<input type="checkbox"/> 0	<input type="checkbox"/> Other_____
76101120	36" (91.4 cm) whirlpool bath, right drain	<input type="checkbox"/> 0	<input type="checkbox"/> Other_____

36" (91.4 cm) WHIRLPOOL BATH

76101110

ALSO 76101120



### Colors/Finishes

- 0: White
- Other: Refer to Price Book for additional colors/finishes

# ENSEMBLE™

## Technical Information

Fixture*:	
Basin area:	
Bathing well	40" (101.6 cm) x 21" (53.3 cm)
Top area	52" (132.1 cm) x 29" (73.7 cm)
To overflow:	
Water depth	11" (27.9 cm)
Capacity	40 gal (151.4 L)
* Approximate measurements for comparison only.	

Pump:	V	Hz	A
1-speed	120	60	7

## Required Electrical Service

Dedicated circuit required, protected with Class A Ground-Fault Circuit-Interrupter (GFCI):	
Pump	120 V, 15 A, 60 Hz

## Installation Notes

Install this product according to the installation guide.

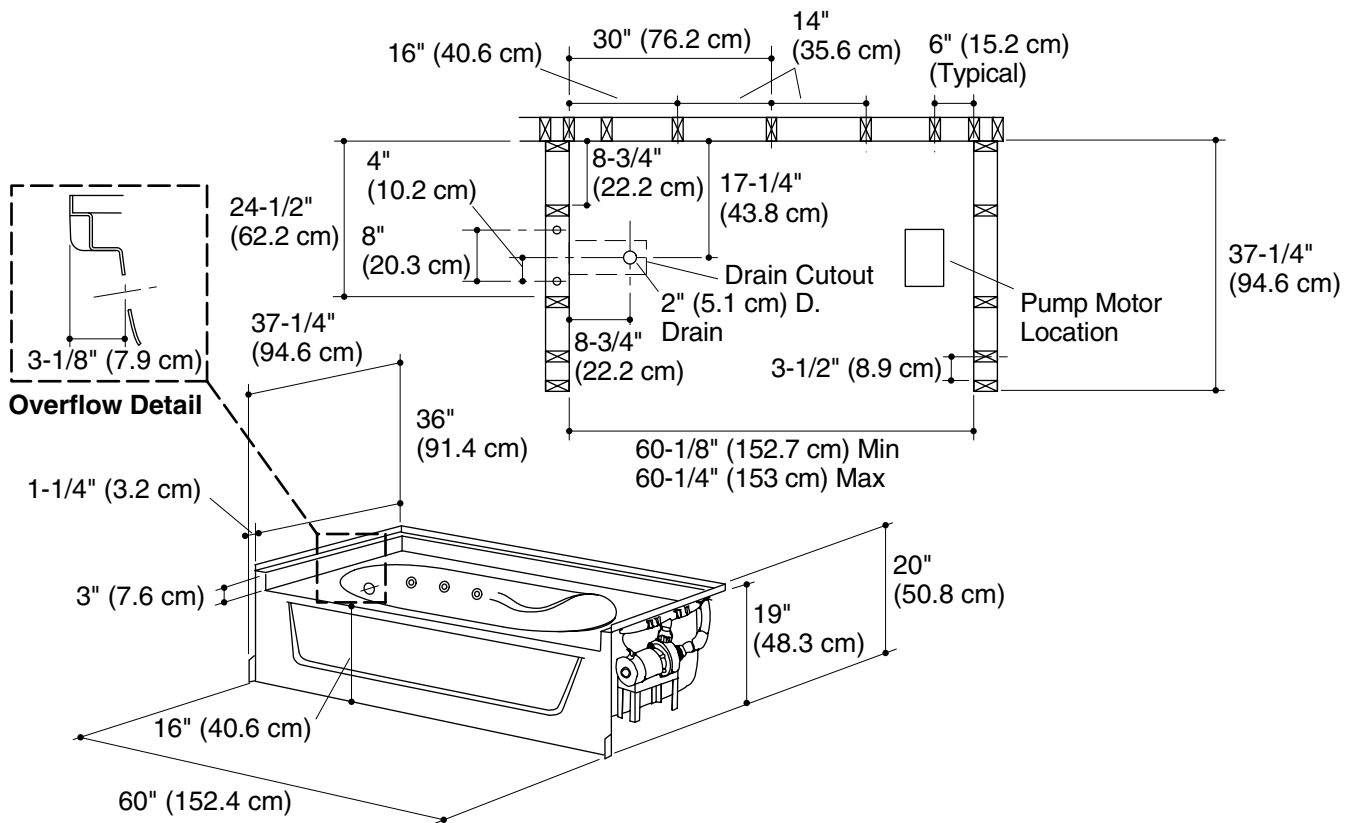
Pump is supplied with a grounding type plug-in cord. Locate the outlet behind the whirlpool, and within 24" (61 cm) of the pump.

Do not disassemble the pump or piping as this could void the warranty.

Size the drain cutout to fit the drain assembly that will be used.

End stud positioning is critical if apron nailing-in flanges are to be used.

Studs should be positioned roughly as shown.



**Product Diagram**