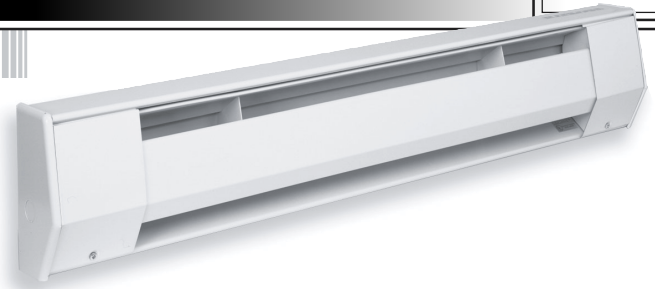


BASEBOARD HEATER



CONVECTION



FEATURES:

- Convection Heat
- Quiet Running
- Back Wire Design
- Built-in Cable Clamps
- Crushproof Element
- All Aluminum Element Design
- Full Length Safety Cutout
- Baked Enamel Finish
- Standard Color - Almond
- Electro-Galvanized 20 Gauge Front Cover 22 Gauge Back Can
- Reinforced Cover
- Soft Contoured Corners
- All Knockouts are 7/8" in diameter for 1/2" conduit
- Removable Reflector
- Optional 18 Gauge Front Cover
- Single or Double Pole Thermostat
- Standard Optional Colors - Bright White
- Optional 18 Gauge Front Cover

Baseboard heaters are an economical way to provide heat. They are typically used in apartment construction and other rental properties because of the low initial cost and low maintenance.

Quality components guarantee a long lasting reliable heater. Standard color is almond.

Special Colors available: Customer must provide sample or color chip at time of order, however due to our painting system, exact color matching may not be

exact. Four weeks or more lead time is required on all special color baseboard orders. Special pricing will apply.

Institutional grade with 18 gauge front covers and 22 gauge back cans are available for special applications. All other specifications are the same as the standard heater.

NOTE: Baseboard Heaters are to be mounted on outside walls to wash the coldest part of a room with a blanket of heat.

New Die-Formed Corners provide smooth appearance and safety.



ENGINEERING SPECIFICATIONS:

Contractor shall supply and install, K-series electric convection baseboard heaters, manufactured by King Electrical Mfg. Company, of the wattage, voltage and length indicated on the plans.

Construction:

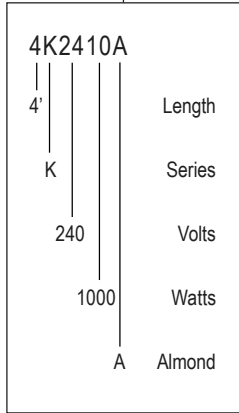
- The heaters shall take room air in the bottom (lower front) and discharge it through the top front.
- The heaters back, bottom, and top shall be fabricated from electro galvanized 22 gauge steel. Front panels shall be fabricated from 20 gauge electro galvanized steel, ribbed longitudinally for extra strength and have center support to resist impact loads.
- The heater casing shall have modern rounded ends and corners to provide a smooth appearance and finished with a baked enamel.
- The heater shall be provided with a continuous capillary sensor tube, for thermal protection, extending the full length of the heating element, rated at 175° F, and be fail-safe type.

- The heater shall have a 44 cubic inch junction box at both ends, furnished with five 1/2" knockouts located on the back, bottom, and side.
- Heater elements shall consist of high quality 80% nickel and 20% chromium alloy resistant wire completely surrounded by magnesium oxide and enclosed and swaged in a rust resistant sheath. Ribbon aluminum fining shall be compression welded to the sheathed element to provide chimney type flue for heat transfer.
- Heaters shall be supplied with a one year limited warranty.

Rating and Approval:

- The heaters shall be available in ratings from 375 through 1,500 Watts at 120 Volts, and 375 to 2,500 Watts at 208-240 and 277 Volts.
- The heaters shall be available in 187 or 250 watts per lineal foot.
- Heaters shall be listed and approved by Underwriters' Laboratories.

MODEL CODE:

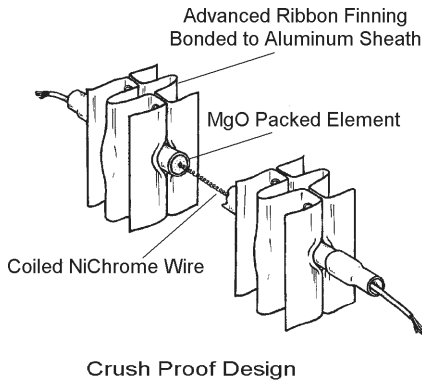


Standard Color: Almond

STANDARD DENSITY: 250 WATTS PER FOOT

WATTAGE	120V		208V		240V		277V		LENGTH	WEIGHT (lbs)
	*MODEL	UPC #093319 PART NO.	*MODEL	UPC #093319 PART NO.	*MODEL	UPC #093319 PART NO.	*MODEL	UPC #093319 PART NO.		
500	2K1205A	11362	2K2005A	11382	2K2405A	11410	2K2403A	11442	27"	7
750	3K1207A	11366	3K2007A	11386	3K2407A	11414	3K2405A	11446	3ft	8
1000	4K1210A	11370	4K2010A	11390	4K2410A	11418	4K2407A	11452	4ft	11
1250	5K1212A	11374	5K2012A	11394	5K2412A	11422	5K2410A	11456	5ft	13
1500	6K1215A	11378	6K2015A	11398	6K2415A	11426	6K2412A	11460	6ft	15
1750					7K2418A	11430			7ft	19
2000			8K2020A	11402	8K2420A	11434	8K2415A	11464	8ft	20
2500			10K2025A	11406	10K2425A	11438	10K2418A	11468	10ft	25

*Add Suffix (-BW) for optional Bright White finish

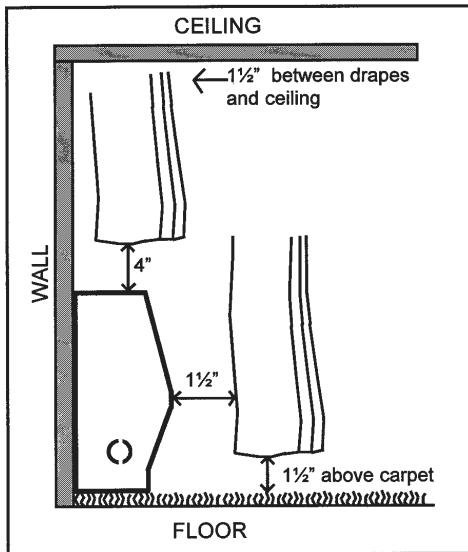


LOW DENSITY: 187 WATTS PER FOOT

WATTAGE	208V		240V		LENGTH	WEIGHT (lbs)
	*MODEL	UPC #093319 PART NO.	*MODEL	UPC #093319 PART NO.		
375	2K2405A	11410	2K2403A	11442	27"	7
563	3K2407A	11414	3K2405A	11446	3ft	8
750	4K2410A	11418	4K2407A	11452	4ft	11
938	5K2412A	11422	5K2410A	11456	5ft	13
1125	6K2415A	11426	6K2412A	11460	6ft	15
1313	7K2418A	11430			7ft	19
1500	8K2420A	11434	8K2415A	11464	8ft	20
1875	10K2425A	11438	10K2418A	11468	10ft	25

*Add Suffix (-BW) for optional Bright White finish

CLEARANCE MINIMUMS FOR DRAPES



DIMENSIONS

