



**MULTI FUNCTIONAL AIR MOVER**  
**OWNER'S MANUAL**  
400 Series (115V & 230V)

XPOWER MANUFACTURE, INC.  
220 Clary Avenue  
San Gabriel, CA 91776, USA  
Tel: 626-285-3301, Fax: 626-285-3302  
[www.xpower.ws](http://www.xpower.ws)



PLEASE READ AND SAVE THESE INSTRUCTIONS

## **Index**

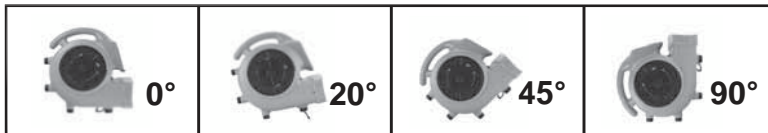
Introduction .....	2
Operation / Instructions.....	3
Safety Instructions.....	4
Maintenance Instructions / Troubleshooting.....	5
Specifications.....	6
Warranty / Service .....	7
Parts List .....	8
Accessories .....	9
Warranty Registration Form .....	10

## Introduction

XPOWER Air Movers are professional level and multi functional Blower Fans with the most efficient engineering design. All XPOWER Air Movers are ETL/CETL/CE/GS certified.

### **Features:**

- Low amp draw with high airflow velocity.
- Super quiet and super light weight.
- Easy clean filter system (optional).
- Easy carrying and stackable.
- Easily disassembled for thorough cleaning and service.
- 20 foot cord with easy cord wrap design.
- Safety screens on open vents.
- 3 speed switch.
- 4 positions (0°, 20°, 45°, 90°).



- Durable and rugged housing structure.

## Operation / Instructions

The XPOWER High Velocity Air Mover is intended to move air and to dry floors, walls, furniture, etc. Durable and easy to operate with an effective balance of static pressure and airflow suitable for a variety of applications.

1. XPOWER Air Movers are shipped ready to be put into service. Prior to plugging in the unit into the power source, inspect completely for any shipping damage.
2. Plug the electrical cord into the power outlet.
3. Carefully place the Air Mover unit on a stable, flat dry surface.
4. The unit has four position capability to aim airflow across flat surfaces or angled upward.
5. Turn the switch to desired speed and make sure it is operating correctly.
6. All Air Mover in operation must be supervised at all times.



### **AIR MOVER STORAGE:**

Air Movers can be stacked (up to 4) on their sides for storage.

#### **NOTICE:**

1. Stacking feature is not secure for transportation.
2. Remove the filters before stacking.



### **Timer Instruction** (Applicable for Model X-430)

Use the Timer to set the preferred time from 1 min to 180 min.

## **Safety Instructions**

1. To prevent electric shock, do not operate unit in standing water. Never plug in or unplug the unit with wet hands or while standing in water.
2. To avoid risk of injury, do not direct air flow at face or body.
3. To reduce the risk of fire or electric shock, do not use the Air Mover with any solid-state speed control device.
4. Use only with GFCI protected receptacles. Please contact a qualified electrician for verification and/or installation of a GFCI receptacle if necessary.
5. Do not operate any unit with a damaged cord or plug. Discard unit or return to an authorized service facility for examination and/or repair.
6. Unplug the unit from the power source before servicing or cleaning.
7. Do not run the power cord under carpeting. Do not cover the power cord with throw rugs, runners, or similar coverings. Place the power cord away from traffic area to prevent tripping.
8. Do not allow children to play with or around Air Mover.
9. Do not move or carry an Air Mover when unit is operating.
10. Air Mover in operation must be supervised at all times.

## **Maintenance Instructions**

1. To keep the Air Mover clean, use a damp cloth to wipe the surface of the housing.
2. Never clean the Air Mover with water.
3. When not in use, unplug and store the Air Mover in a dry indoor place out of reach of children.
4. Always disconnect the Air Mover from its power source before performing any maintenance or cleaning.
5. Clean the filters (optional item) as often as necessary to avoid loss of airflow.

## **Troubleshooting**

For any problems not listed below, call your local distributor or contact our Service Department.

PROBLEM	POSSIBLE CAUSE	SOLUTION
Air Mover not running	No power input	Plug in the air mover; check circuit breaker
	Switch not turned on	Turn on switch
	Unit fan jammed	Remove material jamming fan wheel
	Intake or exhaust blocked	Turn unit off and allow to cool, then remove blockage
Air Mover vibrates excessively	Accumulation of dirt on fan blade	Clean air mover blade

## Specifications

<b>Model</b>	<b>X-400</b>	<b>P-400</b>	<b>X-430</b>
Volt / Cycle	115V / 60Hz	115V / 60Hz	115V / 60Hz
Power	1/4 hp	1/4 hp	1/3 hp
Max. Amp	3 A	3 A	3.8 A
Weight	16 lbs	15 lbs	17 lbs
Speeds	Three	Three	Three
Size (H x W x D)	15 x 13.5 x 15 in.	15 x 13.5 x 15 in.	15 x 13.5 x 15 in.
Cord Length	20 ft	20 ft	20 ft
Overheating Protecting	Thermally Protected	Thermally Protected	Thermally Protected
Rated Airflow (On High)	1600 CFM	1600 CFM	2000 CFM
Positions	4 (0°, 20°, 45°, 90°)	4 (0°, 20°, 45°, 90°)	4 (0°, 20°, 45°, 90°)
Housing	ABS	PP	ABS
Safety Marks	ETL / C-ETL	ETL / C-ETL	ETL / C-ETL
Filter System	Optional	Optional	Optional

## Specifications

<b>Model</b>	<b>X-400 / 230V</b>	<b>P-400 / 230V</b>
Volt / Cycle	230V / 50Hz	230V / 50Hz
Power	350 W	350 W
Max. Amp	1.5 Amps	1.5 Amps
Weight	7.2 kg	7.2 kg
Speeds	Three	Three
Size (H x W x D)	38 x 39 x 38 cm	38 x 39 x 38 cm
Cord Length	6.1 m	6.1 m
Overheating Protecting	Thermally Protected	Thermally Protected
Rated Airflow (On High)	1000 CFM	1000 CFM
Positions	4 (0°, 20°, 45°, 90°)	4 (0°, 20°, 45°, 90°)
Housing	ABS	PP
Safety Marks	CE / GS	CE / GS
Filter System	Optional	Optional



## **XPOWER Limited Warranty**

XPOWER Warranty covers the unit from defects in materials and craftsmanship. The Warranty covers normal use for a term of one year from original date of purchase; including parts, labor and one way shipping. XPOWER Air Mover Housing is covered for a term of five years from the date of the original purchase.

### **Important !**

Warranty does not cover signs of misuse including, but not limited to, a unit that has been dropped, subjected to water damage, tampered with, improper voltage use and unauthorized maintenance and repairs. The POWER CORD and FILTERS are not covered by the warranty.

### **Service**

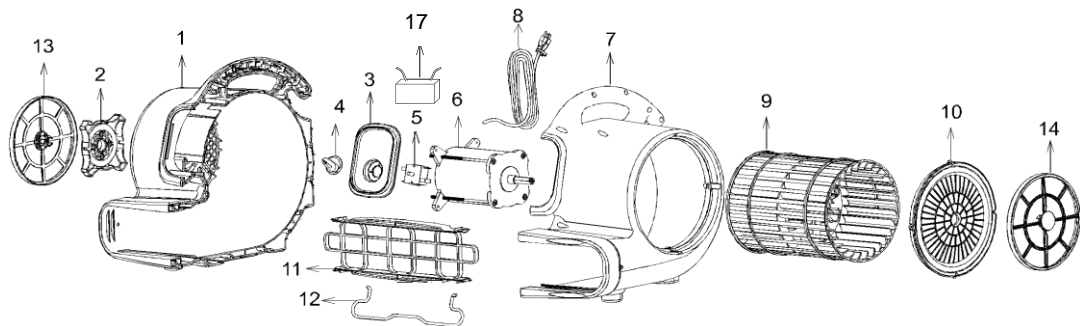
In order to receive service or replacement parts under warranty, you must:

- A. Call for an RMA (Return Merchandise Authorization Number and Service Department address).
- B. Have proof of purchase.

The end user will be responsible to ship the unit (with RMA Number showing on the shipping label) to the XPOWER Service Department. Upon inspection, we will advise you of the repairs needed and the cost (if applicable). XPOWER will provide repair or replacement parts depending on warranty.

## 400 Series Parts List

Item No	Parts Name	Item No	Parts Name
400 1	Left Housing	400 2	Grid Cover (Motor Side)
400 3	Switch Plate	400 4	Switch Knob
400 5	Switch	400 6	Motor
400 7	Right Housing	400 8	Power Cord
400 9	Fan	400 10	Grid Cover (Fan Side)
400 11	Air Outlet Grid Cover	400 12	Kick Stand
400 13	Filter I (Motor Side)	400 14	Filter II (Fan Side)
400 15	Rubber Feet (Not Show)	400 16	Screws and Nuts (Not Shown)
400-17	Capacitor		



## Accessories

### 1. Filters (Optional)

A set of Filters is available for the XPOWER Air Movers which will help prevent small debris and dust from entering the unit. To clean the filters: remove filters from the unit and wash with warm soapy water, rinse with clean water and let dry thoroughly before reinstalling.

#### Installation:

Filters snap into the air inlets.

#### Note:

The filter I is Motor Side,  
The filter II is for the Fan Side.



#### Filter Removal::

Pull the filters out of the unit.

#### Note:

After cleaning, make sure filters are dry before reinstalling.



### -2. Multi Drying Kit

The Kit includes Air Mover adapter, three 8 foot hoses and three airflow adjustment doors.



# WARRANTY REGISTRATION

Please complete and mail or fax for your product warranty. For multiple units, please list serial numbers on a separate sheet of paper. Address: XPOWER MANUFACTURE, INC., 220 Clary Avenue, San Gabriel, CA 91776, USA  
Tel: (626) 285-3301; Fax: (626) 285-3302

Company Name / Contact Person / Title \_\_\_\_\_

Address \_\_\_\_\_ City \_\_\_\_\_

State / Province \_\_\_\_\_ Zip \_\_\_\_\_ Country \_\_\_\_\_

Phone \_\_\_\_\_ Fax \_\_\_\_\_ E-mail \_\_\_\_\_

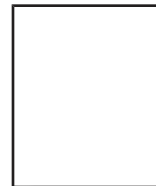
Model # \_\_\_\_\_ Serial # : \_\_\_\_\_

Date of Purchase \_\_\_\_/\_\_\_\_/\_\_\_\_ Purchased From \_\_\_\_\_

Additional Comments/Suggestions \_\_\_\_\_



From: \_\_\_\_\_  
\_\_\_\_\_  
\_\_\_\_\_



TO:

XPOWER MANUFACTURE, INC.

220 Clary Avenue

San Gabriel, CA 91776, USA

Tel: (626) 285-3301; Fax: (626) 285-3302

