



XPOWER™

PROFESSIONAL AIR MOVER
OWNER'S MANUAL

X-800 / X-800H / X-830 / X-830H
P-800 / P-800H / P-830 / P-830H

XPOWER MANUFACTURE, INC.
220 Clary Avenue
San Gabriel, CA 91776, USA
Tel: 626-285-3301, Fax: 626-285-3302
www.xpower.ws



PLEASE READ AND SAVE THESE
INSTRUCTIONS

Index

Introduction	2
Operation / Instructions.....	3
Safety Instructions.....	4
Maintenance Instructions / Troubleshooting.....	5
Specifications.....	6
Warranty / Service	7
Parts List	8
Accessories	9
Warranty Registration Form	10

Introduction

XPOWER Air Movers are Certified Professional Level Multifunctional Air Movers with the most efficient engineering design.

Features:

- Low power draw with high velocity air flow from 3,300 to 3600 CFM
- Super quiet motor and super lightweight
- Easy carrying handle and stackable up to 4 units high.
- Easy and quick to disassemble for thorough cleaning and service.
- Power cords lengths are 20' for P models and 25' for X models.
- Easy cord wrap on handle.
- Luggage handle and wheels for "T" series models
- 3-speed switch.
- Durable and rugged housing with 5 years warranty.
- 4 air flow positions (0°, 20° Kickstand, 45° and 90°).



Operation / Instructions

XPOWER Air Movers are intended to move air and to dry floors, walls, furniture, etc. Durable and easy to operate with an effective balance of static pressure and airflow, the units are suitable for a variety of applications.

1. XPOWER Air Movers are shipped ready-to-use. Prior to plugging the unit into the power source, inspect completely for any shipping damage.
2. Plug the electrical cord into the power outlet.
3. Carefully place the Air Mover unit on a stable, flat dry surface.
4. The unit is capable to be used at 4 different angles to direct air flow.
5. Turn the switch to desired speed and make sure unit operates normally.
6. All Air Movers in operation must be supervised at all times.



AIR MOVER STORAGE:

Air Movers can be stacked (up to 4) on their sides for storage.

NOTICE:
Stacking feature is not secure for transportation.

Safety Instructions

1. To prevent electric shock, do not operate the unit in standing water. Never plug in or unplug the unit with wet hands or while standing in water.
2. To avoid risk of injury, do not direct air flow at face or body.
3. To reduce the risk of fire or electric shock, do not use the Air Mover with any solid-state speed control device.
4. Use only with GFCI protected receptacles. Please contact a qualified electrician for verification and / or installation of a GFCI receptacle if necessary.
5. Do not operate any Air Mover with a damaged cord or plug. Discard the unit or return it to an authorized service facility for examination and/or repair.
6. Unplug the Air Mover from the power supply before servicing or cleaning.
7. Do not run the power cord under carpeting. Do not cover the power cord with throw rugs, runners, or similar coverings. Place the power cord away from traffic area to prevent tripping.
8. Do not allow children to play with or around an Air Mover at any time.
9. Do not move or carry an Air Mover while unit is operating.
10. All Air Movers in operation must be supervised at all times.

Maintenance Instructions

1. To keep the Air Mover clean, use a damp cloth to wipe the surface of the housing.
2. Never clean the Air Mover with water.
3. When not in use, unplug and store the Air Mover in a dry indoor place out of reach of children.
4. Always disconnect the Air Mover from its power source before performing any maintenance or cleaning.

Troubleshooting

For any problems not listed below, call your local distributor or contact our Service Department.

PROBLEM	POSSIBLE CAUSE	SOLUTION
Air Mover not running	No power input	Plug in the Air Mover; check circuit breaker
	Switch not turned on	Turn on switch
	Air Mover fan wheel jammed	Remove material jamming fan wheel
	Intake or exhaust blocked	Turn unit off and allow to cool, then remove blockage
Air Mover vibrates	Accumulation of dirt on fan blades	Clean Air Mover fan blades

Specifications

Model	P-800 / X-800	P-800H / X-800H	P-830 / X-830	P-830H/X-830H
Volt / Frequency	115V, 60Hz	115V, 60Hz	115V, 60Hz	115V, 60Hz
Power	3/4 HP	3/4 HP	1 HP	1 HP
Amp	7.5 Amps	7.5 Amps	8.5 Amps	8.5 Amps
Unit Weight	23 Lbs. / 24.5 Lbs.	26 Lbs. / 27.5 Lbs.	24 Lbs. / 25.5 Lbs.	27 Lbs. / 28.5 Lbs.
Speeds	Three	Three	Three	Three
Size (L x W x H)	15.9 x 17.5 x 18.5 in.	15.9 x 18.7 x 18.7 in.	15.9 x 17.5 x 18.5 in.	15.9 x 18.7 x 18.7 in.
Handle / Wheels	N.A.	YES	N.A.	YES
Cord Length	20 Ft. / 25 Ft.	20 Ft. / 25 Ft.	20 Ft. / 25 Ft.	20 Ft. / 25 Ft.
Overheating Protecting	Thermally Protected	Thermally Protected	Thermally Protected	Thermally Protected
Rated Airflow (on high)	3200 CFM	3200 CFM	3600 CFM	3600 CFM
Positions	4 (0°, 20°, 45°, 90°)	3 (0°, 20°, 90°)	4 (0°, 20°, 45°, 90°)	3 (0°, 20°, 90°)
Housing	PP / ABS	PP / ABS	PP / ABS	PP / ABS
Safety Certificates	ETL / C-ETL	ETL / C-ETL	ETL / C-ETL	ETL / C-ETL

XPOWER LIMITED WARRANTY

XPOWER Warranty covers the unit from defects in materials and craftsmanship. The Warranty covers normal use for a term of one year from the original date of purchase including parts, labor and one way shipping. The XPOWER Air Mover Housing is covered for a term of five years from the date of original purchase.

Important !

This Warranty does not cover signs of misuse including, but not limited to, a unit that has been dropped, subjected to water damage, tampered with, improper voltage use and unauthorized maintenance and repairs. The POWER CORD is not covered by the warranty.

Service

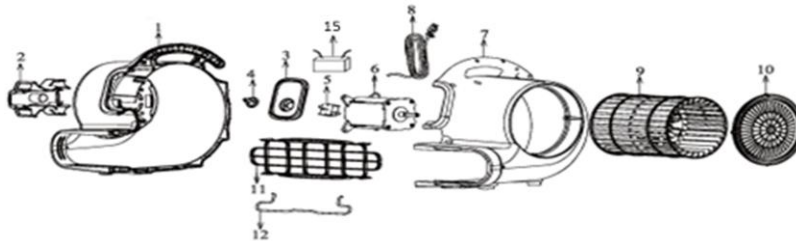
In order to receive service or replacement parts under warranty, you must:

- A. Must Call for a Return Merchandise Authorization (RMA) number through Service Department and obtain ship back instructions.
- B. Must have original proof of purchase.
- C. Must use original none damaged packaging or Industrial certified packaging method.

The end user will be responsible to ship the unit (with the RMA number showing on the shipping label) to the XPOWER Service Department. Upon inspection, we will advise you of the repairs needed and the cost (if applicable). XPOWER will provide repair or replacement parts depending on warranty.

800 Series Parts List

Item No.	Parts Name	Item No.	Parts Name
800-1	Left Housing	800-2	Grid Cover (Motor Side)
800-3	Switch Plate	800-4	Switch Knob
800-5	Switch Plate	800-6	Motor
800-7	Right Housing	800-8	Power Cord
800-9	Fan	800-10	Grid Cover (Fan Side)
800-11	Air Outlet Grid Cover	800-12	Kick Stand
800-13	Rubber Feet (Not Shown)	800-14	Screws and Nuts (Not Shown)
800-15	Capacitor		



Accessories

Luggage Handle & Wheels (for 800T and 830T models)

XPOWER Air Mover Model Nos. P-800T, P-830T, X-800T & X-830T comes with built-in adjustable luggage handle and wheels for easy transport and mobility.



WARRANTY REGISTRATION

Please complete and mail or fax for your product warranty. For a multiple of units, please list serial numbers on a separate sheet paper

Address: XPOWER MANUFACTURE, INC. 220 Clary Avenue, San Gabriel, CA 91776, USA

Tel: (626) 285-3301; Fax: (626) 285-3302

Company Name / Contact Person / Title _____

Address _____ City _____

State / Province _____ Zip _____ Country _____

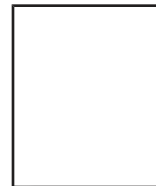
Phone _____ Fax _____ E-mail _____

Model # _____ Serial # _____

Date of Purchase ____/____/____ Purchased From _____

Additional Comments / Suggestions _____

From: _____



TO:
XPOWER MANUFACTURE, INC.
220 Clary Avenue
San Gabriel, CA 91776, USA
Tel: (626) 285-3301; Fax: (626) 285-3302

