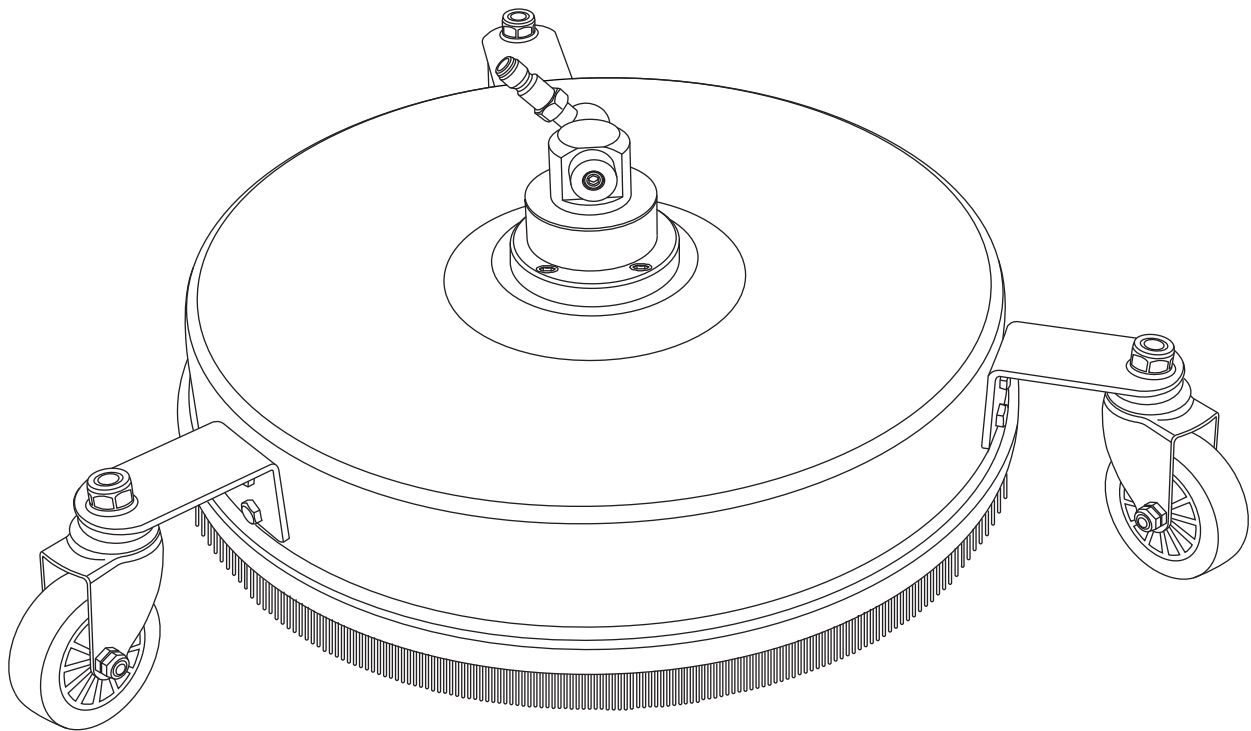


# INSTRUCTION SHEET

15-in Pressure Washer Surface Cleaner

HEAVY DUTY STAINLESS STEEL CONSTRUCTION

MODEL #SGY-PWA77



**ATTACH YOUR RECEIPT HERE**

**Purchase Date** \_\_\_\_\_



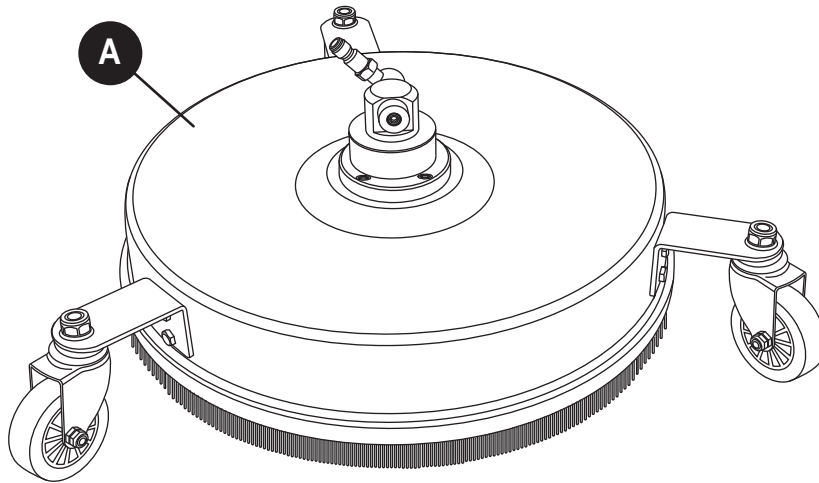
**Questions, problems, missing parts?** Before returning to your retailer, call our customer service department at +1 (866) 870-9930, 9 a.m. - 5 p.m., EST, Monday - Friday.

[www.surfacemaxx.com](http://www.surfacemaxx.com)

## TABLE OF CONTENTS

Product Specifications .....	2
Safety Instructions .....	3
Intended Use .....	3
Recommendation .....	3
Assemble .....	3
Operation .....	4
Maintenance .....	4
Replacement Parts List .....	5

## PACKAGE CONTENTS



PART	DESCRIPTION	QUANTITY
A	15-in Surface Cleaner	1

## PRODUCT SPECIFICATIONS

COMPONENT	SPECIFICATIONS
Connections	1/4 in. Quick Connect Plug
Deck Width	15 in.
Maximum Pressure	4500 PSI
Maximum Water Flow	3.5 GPM
Maximum Water Temperature	140 °F/ 60 °C
Weight	7.5 lbs.

## SAFETY INSTRUCTIONS

### **⚠ WARNING:**

When using this product basic precautions should always be followed, including but not limited to the following:

1. Observe the safety instructions of your pressure washer.
2. The Surface Cleaner must not be used by children.
3. Only trigger the gun of the pressure washer if the Surface Cleaner is on the surface to be cleaned.
4. Keep all persons/animals clear of the immediate vicinity of the cleaning head.
5. Keep hands away from moving parts.
6. Turn off the pressure washer and relieve the pressure when examining or changing the Surface Cleaner and after the completion of the cleaning operation.
7. Maximum water temperature allowed is 140 °F/ 60 °C. Follow the instructions for your pressure washer.

### **⚠ CAUTION:**

1. The Surface Cleaner is not suited for scouring or scrubbing.
2. Do not run over freestanding corners.
3. Test the Surface Cleaner in an inconspicuous area.
4. Not to be used on vertical surfaces.

## INTENDED USE

1. The Surface Cleaner can be used with most gas pressure washers up to 4500 PSI.
2. Use on horizontal surfaces like driveways, patios, sidewalks, etc.

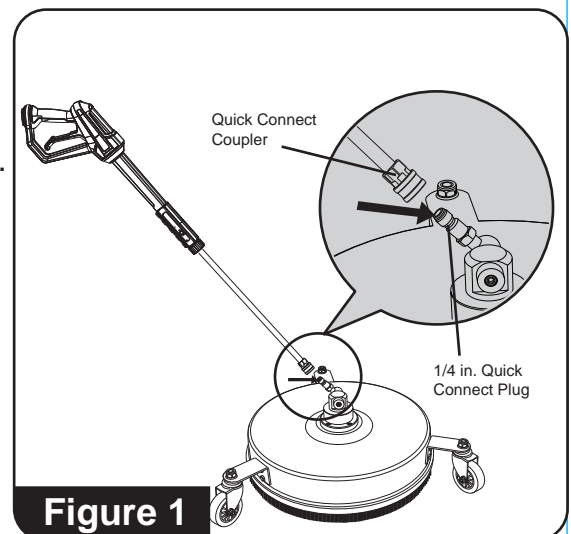
## RECOMMENDATION

1. It is recommended that a high pressure filter be purchased to prevent the nozzles from getting clogged.

## ASSEMBLE

See Figure 1.

1. The surface cleaner comes completely assembled and ready for use.
2. Attach the surface cleaner's 1/4 in. quick connect plug into the end of the pressure washer wand (See Figure 1).
3. Connect hose to the pressure washer and start pressure washer as described in its Owner's Manual.



### **⚠ CAUTION:**

1. Risk of injury can occur if the surface cleaner 1/4 in. quick connect plug is not properly inserted into the quick connect coupler. Make sure you hear a "click" sound when attaching the 1/4 in. quick connect plug to the quick connect coupler.
2. Pull the Surface Cleaner to make sure it is seated properly before operating your unit.

## OPERATION

See Figure 2.

1. Squeeze the trigger and moving the surface cleaner back and forth and / or side to side begin to cleaning.
2. Never operate in the same area for more than 2 seconds, damage may occur.

**NOTE:** If striping or swirling occurs:

1. Slow your pace and try cleaning the area by going back and forth and side to side.
2. Try overlapping when cleaning by 50%.

**NOTE:** Always squeeze the gun's trigger to release any residual pressure immediately after use. Engage the trigger lock when not in use.

### **⚠ CAUTION:**

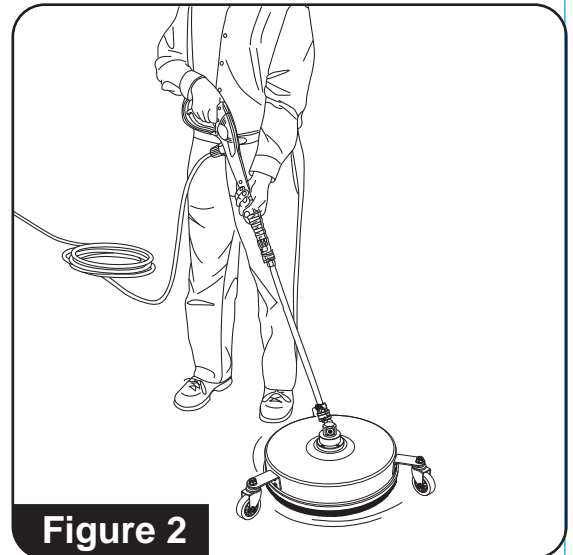
Striking any raised obstacle while using the surface cleaner could damage the unit. If contact does occur and causes vibration when operating the surface cleaner, stop use immediately. Continuing to operate the unit could result in serious injury.

## MAINTENANCE

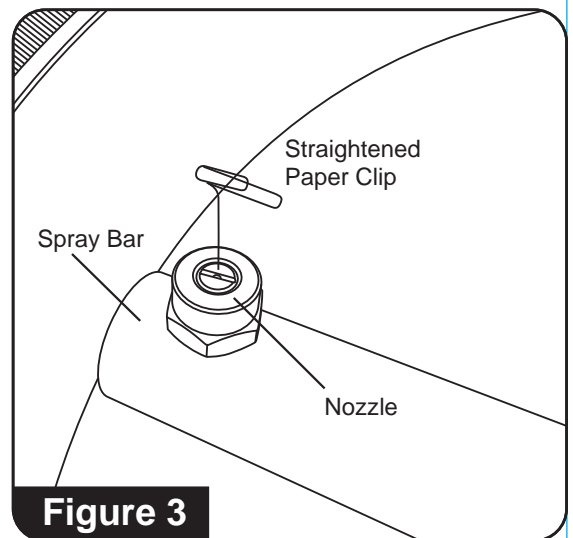
A clogged or dirty nozzle will result in excessive pump pressure causing a pulsing sensation.

1. Turn off the pressure washer and turn off the water supply. Release the residual pressure by squeezing the gun's trigger.
2. Disconnect the pressure washer wand from the surface cleaner.
3. Using a wrench (not provided) remove the both nozzles from the spray bar.
4. Using a straightened paper clip, free any foreign material clogging or restricting the nozzle. (See Figure 3)
5. Flush debris out of the nozzle. Direct the flow of water through the nozzle backwards from the outside to the inside.
6. Attach the wand back to the surface cleaner, set the surface cleaner on a flat surface. Turn on the water (NO NOT START THE PRESSURE WASHER) and squeeze the trigger on the gun. Allow water to run through the spray bar for approximately 30 seconds.
7. Reinstall the nozzle to the spray bar. Tighten securely. Align the nozzle opening as shown in Figure 4.

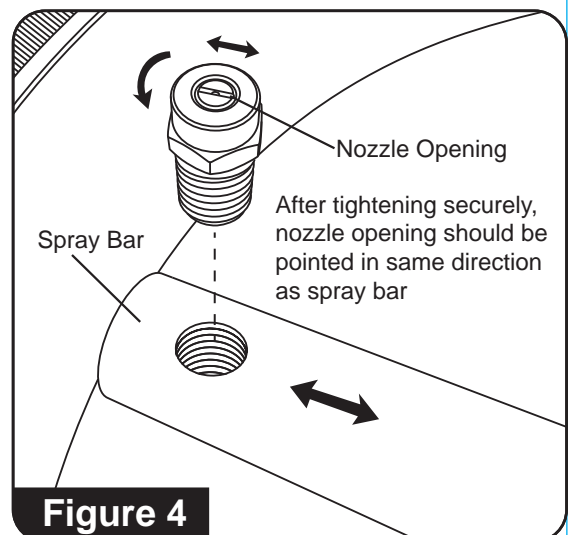
Note: If your spray pattern begins to change, it could mean that the nozzles are worn and they will need to be replaced.



**Figure 2**



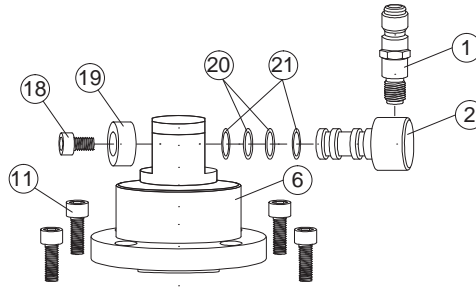
**Figure 3**



**Figure 4**

# REPLACEMENT PARTS LIST

PART	DESCRIPTION	QTY
1	Inlet Plug	1
2	Swivel Valve	1
3	Spring	1
4	Fixed Seal	1
5	Protection Ring	1
6	Manifold Body	1
7	Bearing	2
8	Snap Ring	1
9	Bottom Plate	1
10	Brush	1
11	Screw	4
12	Shaft	1
13	Snap Ring	1
14	O-ring	1
15	O-ring	1
16	Locking Pin	2
17	O-ring	1
18	Screw	1
19	Washer	1
20	O-ring	2
21	O-ring	2
22	Spray Bar	1
23	End Plug	2



PART	DESCRIPTION	QTY
24	Spray Tip	2
25	SS Shroud	1
26	Nut	8
27	Washer	16
28	Screw	8
29	Wheel Support Bracket	3
30	Nut	3
31	Wheel	3

