

1-YEAR LIMITED WARRANTY

The manufacturer warrants this product to be free from manufacturing and material defects for a period of one year from date of purchase, subject to the following conditions and limitations.

1. Install and operate this item in accordance with the installation and operating instructions furnished with the product at all times. Any unauthorized repair, alteration, willful abuse, accident or misuse of the product shall nullify this warranty.
2. This warranty is non-transferable, and is made to the original owner, provided the purchase was made through an authorized supplier of the product.
3. The warranty is limited to the repair or replacement of part(s) found to be defective in material or workmanship, provided that such part(s) have been subjected to normal conditions of use and service, after said defect is confirmed by the manufacturer's inspection.
4. The manufacturer may, at its discretion, fully discharge all obligations with respect to this warranty by refunding the wholesale price of the defective part(s).
5. Any installation, labor, construction, transportation or other related costs/expenses arising from defective part(s), repair, replacement or otherwise of same, will not be covered by this warranty, nor shall the manufacturer assume responsibility for same.
6. The owner/user assumes all other risks, if any, including the risk of any direct, indirect or consequential loss or damage arising out of the use, or inability to use the product, except as provided by law.
7. All other warranties – expressed or implied – with respect to the product, its components and accessories, or any obligations/liabilities on the part of the manufacturer are hereby expressly excluded.
8. The manufacturer neither assumes, nor authorizes any third party to assume on its behalf, any other liabilities with respect to the sale of the product.
9. The warranties as outlined within this document do not apply to non accessories used in conjunction with the installation of this product.
10. This warranty gives you specific legal rights, and you may also have other rights which vary from state to state.

This warranty is void if:

- a. The fireplace is subjected to prolonged periods of dampness or condensation.
- b. Any unauthorized alteration, willful abuse, accident, or misuse of the product.
- c. You do not have the original receipt of purchase.

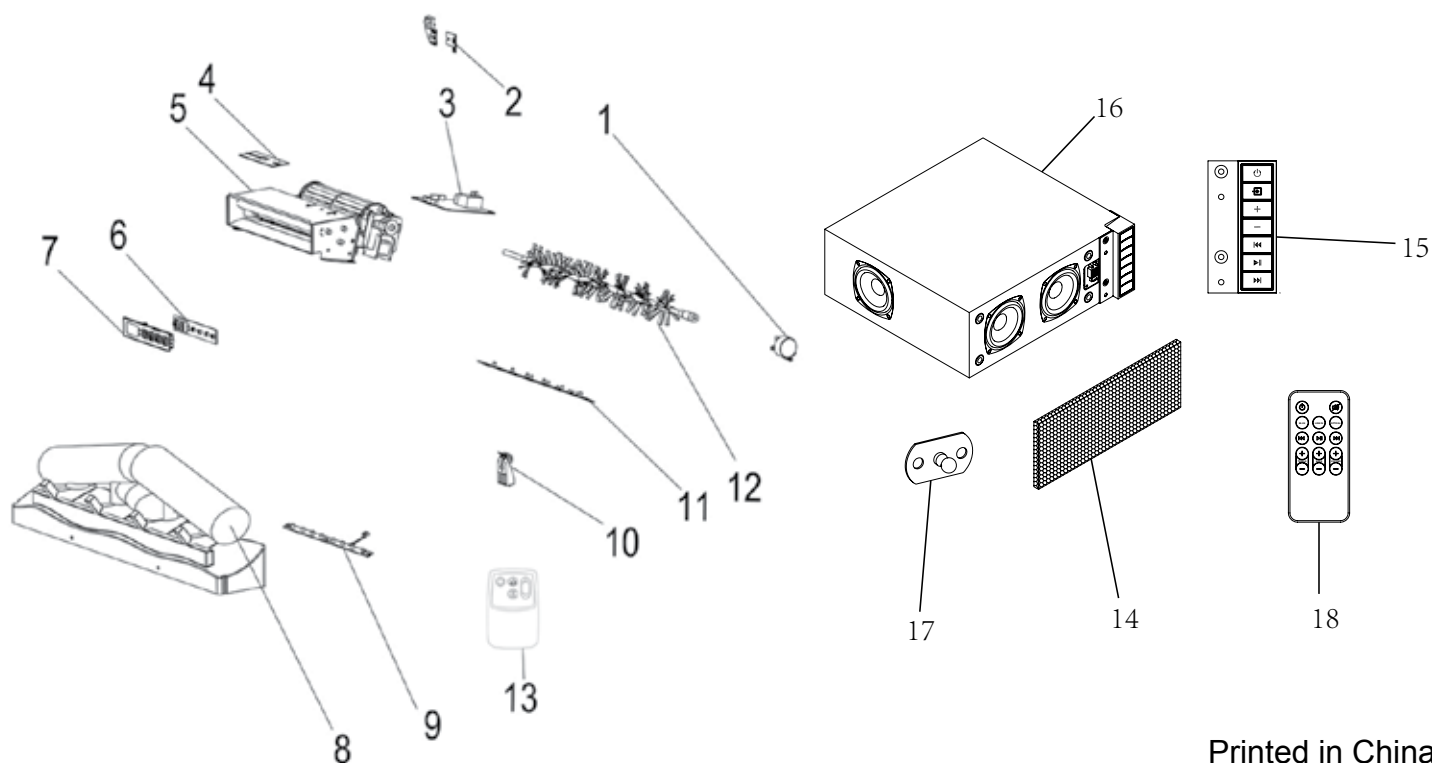
IF WARRANTY SERVICE IS NEEDED

Contact the manufacturer by calling the customer service department at 1-877-888-8225, 8 a.m. - 8 p.m., EST, Monday - Friday. Make sure to have the warranty, sales receipt, location of purchase and the model serial number of the product.

REPLACEMENT INSERT PARTS LIST

For replacement parts, call our customer service department at 1-877-888-8225, 8 a.m. - 8 p.m., EST, Monday - Friday.

PART	DESCRIPTION	PART NO.
1	Flame Generator Drive Motor	P10-6-Q
2	Thermostat Sensor	INS-NTC
3	Main Circuit Board	Y15-C70-P15
4	Thermostat	Y15-C70-P05
5	Heater/Blower Assembly	Y15-C72-P01
6	Control Panel Circuit Board	Y15-C70-P32
7	Control Panel Buttons	Y15-C70-P85
8	Emberbed with Log	Y15-S148-P02
9	Emberbed Circuit Board	Y15-C75-P44E
10	Blue Flame Circuit Board	Y15-C70-P40BL
11	Flame Circuit Board	Y15-C76-P40
12	Flame Generator/Spinner	Y15-S148-P11
13	Insert Remote Control	P115
14	Speaker Grill	Y15-SG-12130308
15	Speaker Control Panel	Y15-CP-1213
16	Speaker	Y15-SB-1213
17	Speaker Grill Clip	Y14-PID01-PG
18	Speaker Remote Control	Y15-RC-1213



Bluetooth® is a registered mark of Bluetooth SIG, Inc.

Printed in China
 Style Selections® is a registered trademark
 of LF, LLC. All rights reserved.