



Owner's Manual



TIMBER CHAMP KINETIC LOG SPLITTER
Model No. 4008019
ASSEMBLY & OPERATING INSTRUCTIONS



Read this manual.
Serious injury or death can result if
safety instructions are not followed.

INSIDE

Intended Use, PPE and General Safety 3

Safety Decals & Work Area 4

Operational Safety 5

Assembly 6

Operation..... 7

Storage & Maintenance 8

NOTE:
Any modification to Log Splitter
will void any and all warranty.



15000 W 44th Avenue Suite B.
Golden, CO 80403

Customer Service: 720-437-7640

Email: customerservice@tooltuffdirect.com



INTENDED USE

- ✓ NEVER use this log splitter for any other purposes than splitting wood. It is designed for this use only. Any other use can cause serious injury or death.

PERSONAL PROTECTIVE EQUIPMENT

- ✓ BEFORE operating this log splitter make sure that you wear safety gear such as goggles or safety glasses, steel toed shoes and tight fitting gloves (without loose cuffs or draw strings). Always wear a protective hearing device when operating this log splitter.
- ✓ NEVER wear loose clothing or jewelry that can be caught by moving parts of the log splitter. Keep clothing and hair away from all moving parts when operating this log splitter.

GENERAL SAFETY

- ✓ Failure to follow these instructions may result in serious injury or death.
- ✓ NEVER allow children to operate this log splitter. NEVER allow adults lacking proper instructions and understanding to operate this log splitter.
- ✓ KEEP all people and pets a minimum of 10 feet away from your work area when operating this log splitter. Only the operator is to be near the log splitter during use.
- ✓ If a helper is assisting in loading logs, NEVER actuate the control until the helper is clear of the work area.
- ✓ NEVER operate the log splitter when under the influence of alcohol, drugs or medication.
- ✓ NEVER wear loose fitting clothes or jewelry while operating the log splitter.
- ✓ NEVER allow a person who is tired or otherwise not alert to use your log splitter.

WARNING

SAFETY DECALS

- ✓ Read and understand the manual before operation.
- ✓ Wear safety glasses and hearing protection, tight-fitting safety gloves and steel-toe boots.
- ✓ Keep all people and pets away from work area.
- ✓ Only one person should operate the splitter.
- ✓ Only operate the log splitter in daylight.
- ✓ Caution: Pinch Points
- ✓ Warning: Moving parts. Never place body between log and ram during forward or reverse stroke. Serious injury or death could result.
- ✓ Never remove stuck log with bare hands.
- ✓ Do not touch rotating parts.
- ✓ Always disconnect power supply before performing maintenance, cleaning, adjustments or moving the log splitter.
- ✓ NEVER operate the log splitter on slippery, wet, muddy or icy ground.



WORK AREA

- ✓ ONLY operate your log splitter on a level surface. Operating on a slope could cause the log splitter to roll over or cause logs to fall off.
- ✓ NEVER operate your log splitter in a damp or rainy environment to avoid electric shock or short circuit.
- ✓ ALWAYS block the wheels to prevent movement of the log splitter while in operation.
- ✓ ONLY operate your log splitter in daylight or under good artificial light.
- ✓ ALWAYS keep the work area clean. Remove split wood around your log splitter immediately to avoid stumbling over it.

OPERATIONAL SAFETY

- ✓ ALWAYS ensure the motor is properly grounded or apply protection device. Only use rubber-jacketed cable of sufficient lead cross section as an extension cable.
- ✓ KNOW how to stop the log splitter and disengage the controls before operating it.
- ✓ NEVER place hands, feet or any body part between the ram and splitting wedge during forward or reverse stroke. Serious injury or death could result.
- ✓ NEVER straddle or step over the log splitter during operation.
- ✓ NEVER reach or bend over the log splitter to pick up a log.
- ✓ NEVER try to split two logs on top of each other.
- ✓ NEVER try to cross split a second log.
- ✓ NEVER allow one person to operate while another is positioning the log.
- ✓ NEVER attempt to load your log splitter when the ram is in motion.
- ✓ ALWAYS use your hand to operate the control lever and the switch. NEVER use your foot, a rope or any extension device.
- ✓ NEVER move the log splitter while the motor is running. Shut off the motor when the log splitter is unattended.
- ✓ NEVER operate your log splitter when it is in poor mechanical condition or in need of repair.
- ✓ ALWAYS unplug the power cable before performing any maintenance and repair. Periodically check that all nuts, bolts, screws, and belts are tightened properly.
- ✓ NEVER alter your log splitter in any manner such as adding a rope or extension to the control lever or adding to the width or height of the wedge. Such alterations may cause your log splitter to be unsafe and will void the warranty.
- ✓ ALWAYS perform all recommended maintenance procedures before using your log splitter. Replace all damaged and/or worn parts immediately.
- ✓ NEVER tamper with the motor to run it at excessive speeds. The maximum motor speed is preset by the manufacturer and is within safety limits.
- ✓ ALL replacement parts must meet manufacturer's specifications.
- ✓ NEVER operate your log splitter near a flame or spark. Hydraulic oil is flammable and can explode.
- ✓ ALWAYS take a Class B fire extinguisher with you when operating this log splitter in dry areas as a precautionary measure against possible flying sparks.



CAUTION:
Please be aware that motor will shut down if overheated.

ASSEMBLY

Tools required: 14mm" wrench

NOTE: This log splitter was partially assembled at the factory. Refer to the drawing and parts list should it become necessary to repair replacement parts.

1. Remove all the components from the box. Inspect each piece for shipping damage. If any part is damaged, contact your dealer or delivery carrier.
2. Securely fasten the foot of the log splitter to the main beam using the hardware provided.



WARNING: Read and thoroughly understand all instructions and safety information before operating this log splitter. Failure to do so may cause serious injury or death. Do not allow anyone to operate this log splitter who has not read this manual. As with all power equipment, a log splitter can be dangerous if assembled or used improperly. Do not operate this log splitter if you have doubts or questions concerning safe operation. Call our customer service department at 720-437-7640 to address these concerns.

Si no entiende ingles, se prefiere que busque alguien que interprete las instrucciones para usted.

OPERATION

1. **WARNING: ALWAYS WEAR SAFETY GLASSES, SAFETY GLOVES, SAFETY SHOES AND SUITABLE WORK CLOTHING WHEN OPERATING THIS LOG SPLITTER. NEVER WEAR JEWELRY, NECKTIES OR OTHER LOOSE CLOTHING.**

DANGER: KEEP HANDS AND FEET CLEAR OF RAM AND WEDGE AT ALLTIMES.

1. Place the log splitter on a sturdy, level surface.
2. Ensure the equipment is in safe working condition. Check all nuts and bolts are tight. Check the switch, power cable and plug are not damaged. Check that all safety shields are in proper position.
3. Check that the outlet's main voltage and frequency match the data stated on the model plate (or "Technical Specifications" in this manual).
4. Plug in the power cable and switch on the motor. If using an extension cord, cord gauge must be 12 or lower for 25 feet cord length, 10 gauge or lower for 50 feet cord length.
5. Place a log on the beam against the wedge. Make sure that the log is securely on the wedge and up against the beam. Logs should be cut with square ends and to a maximum length of 20 inches in advance.
6. Depress the lock handle then pull back on the engagement handle which will drive the ram into the log. If the log has not completely split after the cylinder has reached the end of its extension, retract the ram and extend again.

CAUTION: ALWAYS SPLIT THE LOG ALONG ITS GRAIN. IF SPLIT ACROSSTHE GRAIN SOME TYPES OF WOOD MAY BURST OR FLY OUT RESULTING IN INJURY.

CAUTION: IF THE LOG IS STUCK ON THE WEDGE, RELEASE BOTH HANDS AND UNPLUG THE POWER CABLE IMMEDIATELY. KNOCK OFF THE LOG WITH A HAMMER. DO NOT USE YOUR HANDS.

When finished splitting, switch the motor off and unplug the power cable.

NOTE: If you experience problems splitting especially hard wood, do not keep pushing on the control handle. Release the handle and the ram will return. If you continue to push the control handle, the ram may fail to retract. If this occurs, turn off the power switch. Then, turn on the power switch and continue operation.

Failure to do regular maintenance will void warranty.

STORAGE

- ✓ Store the log splitter switched off and unplugged.
- ✓ Allow the log splitter to cool for 5 minutes after use before storing.
- ✓ Protect the power supply cable from heat, sunshine, aggressive liquids and sharp edges.
- ✓ Store the log splitter in a clean and dry area. Don't store it unprotected outdoors, next to corrosive materials or in a damp environment. Store the log splitter where children cannot start it.

MAINTENANCE

- ✓ Switch off and unplug power cable before performing any maintenance and repair.
- ✓ If the wedge becomes dull or nicked, it can be sharpened. ALWAYS wear safety gloves while handling the wedge.
- ✓ All replacement parts must meet manufacturer's specifications.
- ✓ Check for loose fasteners before each use.
- ✓ Grease rack after every 20 hours of use or sooner if necessary.

NOTE: If the motor is overloaded for a long time, the thermal protector will disconnect the power of the motor. Contact our customer service department if this happens.

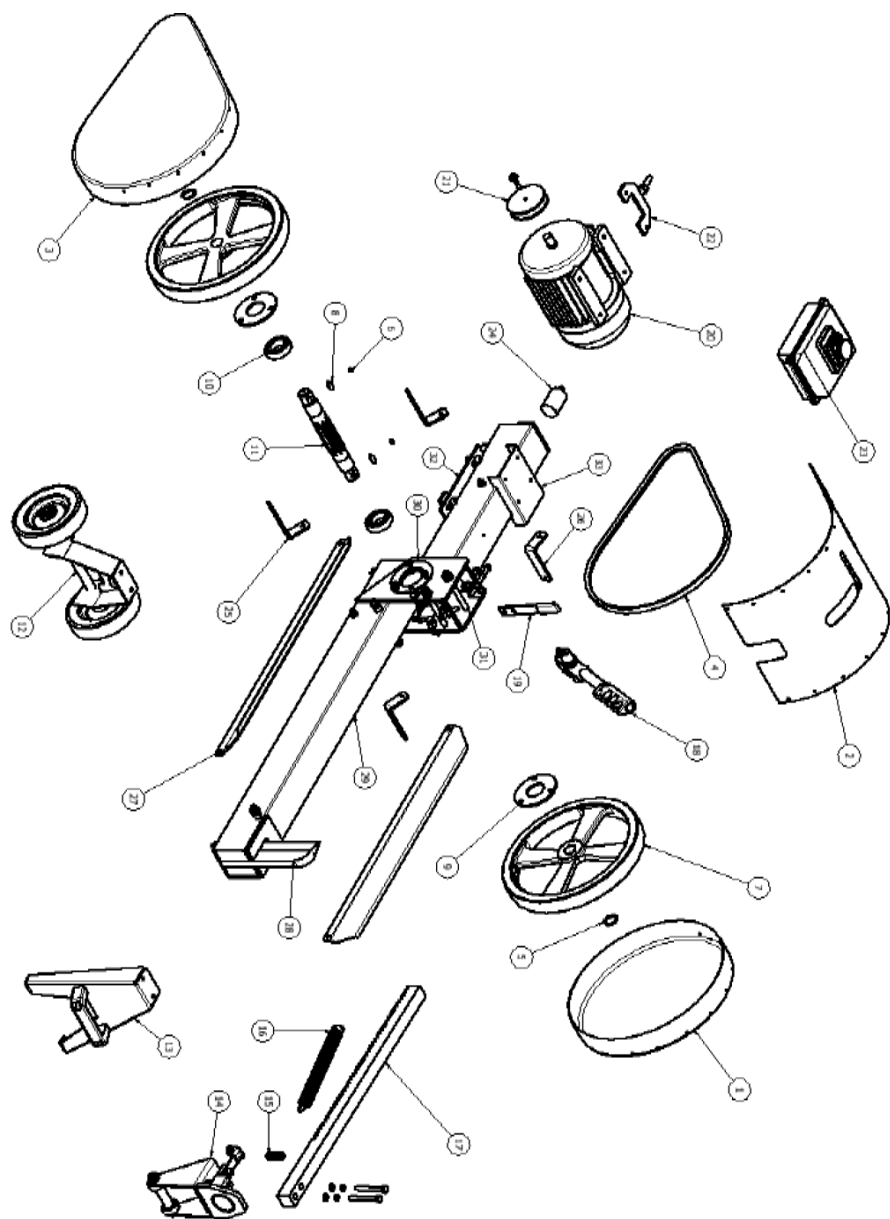
NOTE: Switch off and unplug the power cable quickly if the machine is acting abnormal. Contact our customer service department to address these concerns.

MODEL SPECIFICATIONS

MAXIMUM SPLITTING FORCE	7 Tons
ELECTRICAL REQUIREMENT	110V/60Hz
POWER INPUT.....	1300W
POWER OUTPUT	1100W
RATED CURRENT	16A
MOTOR	1.7 HP
CYCLE TIME	2 seconds
MAXIMUM LOG LENGTH.....	20"
MAXIMUM LOG DIAMETER	16"
TIRE SIZE	7"
MACHINE DIMENSIONS (LXWXH)	50.25"x11.75"x 24.5"
WEIGHT	139 lbs.

PARTS LIST

Ref#	Description	Qty
1	Round safety guard	1
2	Top safety guard	1
3	Belt safety guard	1
4	V-belt	1
5	Snap ring	2
6	Set screw	2
7	Flywheel	2
8	Keyway tab	2
9	Bearing plate	2
10	Bearing-pinion	2
11	Pinion	1
12	Wheel assembly	1
13	Front stand & Handle	1
14	Push plate assembly	1
15	Compression rack spring	1
16	Extension return spring	1
17	Rack	1
18	Handle assembly	1
19	Safety lever	1
20	1.7 HP motor	1
21	V-belt pulley	1
22	Rear motor mount	1
23	Electrical box & Power switch	1
24	Rear rack stop	1
25	Mounting bracket-belt safety guard	2
26	Mounting bracket-round safety guard	2
27	Log cradle	2
28	Slitting wedge	1
29	Body-log rest	1
30	Body-pinion housing	1
31	Body-handle & functional bolts	1
32	Motor mounting plates	2
33	Electrical box mounting plate	1



PINION CHANGE GUIDE

Also available at <https://tooltuffdirect.com/product/7t-kinetic-log-splitter/>

The purpose of this guide is to go over step by step how to change out a rejected pinion for a new part that has been heat treated. Read the owner's manual to familiarize yourself with the machine controls and possible safety hazards. Place the Rapid Strike Log Splitter on a solid flat surface and follow steps 1 through 6.

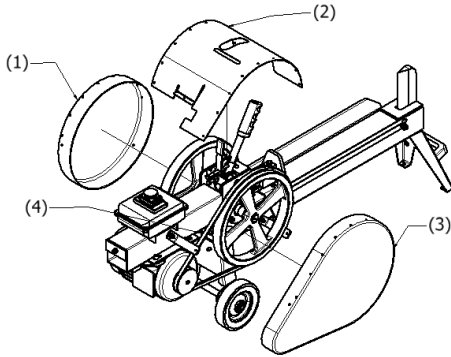
TOOLS REQUIRED

● Phillips Screwdriver	● 4mm Allen wrench
● Snap ring pliers	● 14mm wrench
● Pliers or chisel	● 12mm wrench
● 3lb hammer	● 1.5" pipe (PVC or otherwise)

STEP 1: Remove Safety Shroud & V-Belt

1. Remove all 22 screws from the round guard (1), the top guard (2), and the belt guard (3). Place the three guard components off to the side and out of the work area.

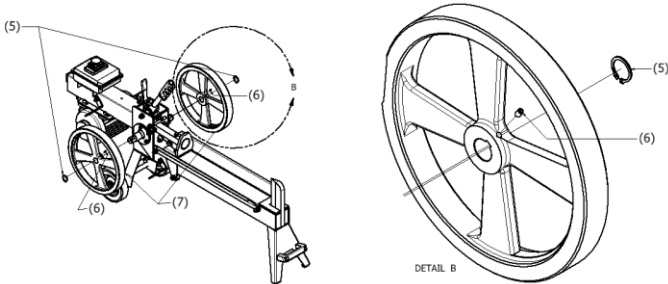
Note: It is necessary to engage the handle in order to remove the top guard (3).



2. Slip the v-belt (4) off the flywheel and remove it from the pulley. Set the belt aside.

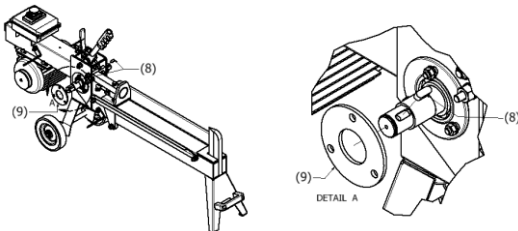
STEP 2: Remove Snap Rings and Flywheels

1. Use snap ring pliers to remove the snap rings (5) on either end of the pinion. Set the rings aside.
2. Use a 4mm Allen wrench to loosen the set screws (6) located in the center of the flywheels around the pinion. Remove tension off the keyway tabs (8) but, it is not necessary to remove the screws.
3. Use a 3lb hammer to knock the flywheels (7) off of the pinion. Tap the flywheel's outer edge and rotate the wheel every couple hits. Set the flywheels aside.



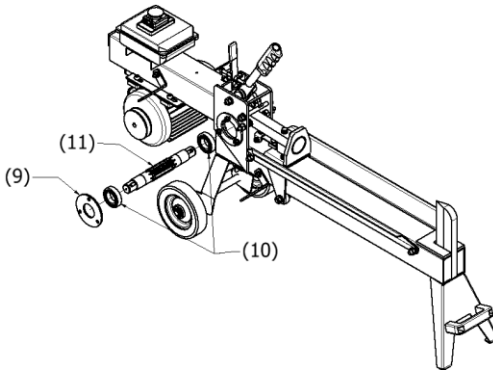
STEP 3: Remove the Keyway Tabs and Bearing Plate

1. Use a pair of pliers or a chisel on the outside edge of the keyway tab (8) and remove them with a hammer. Set the tabs aside.
2. Use a 14mm wrench to remove the three bolts holding the bearing plate (9). A 12mm wrench may be needed to hold the bolt heads. Remove the one bearing plate and set it aside.
3. Replace the three nuts to prevent the bolts from backing out.



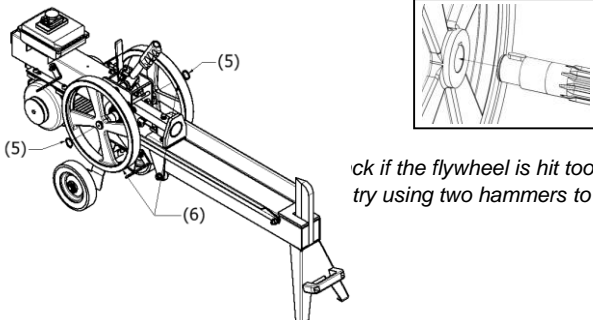
STEP 4: Remove Pinion and Replace Bearings

1. Hammer the bearings (10) and the old pinion (11) out the open side of the housing. Remove the bearings from the rejected part. Dispose of the old pinion.
2. Replace bearings on the new pinion. Insert the new pinion assembly into the housing.
3. Use a 1.5" pipe to fully seat the bearings. Replace the bearing plate (9) and tighten the bolts.



STEP 5: Replace Keyway Tabs, Flywheels, and Snap Rings

1. Insert the keyway tabs (8) into the new pinion. Fully seat the tabs with a hammer.
2. Use the 3lb hammer to fully insert the flywheels (7) on the new pinion. Rotate every hit around the center of the wheel making sure each is fully seated.
3. Use a 4mm Allen wrench to tighten the set screws (6).
4. Replace the snap rings (5) on either end of the pinion.
Note: Make sure the flywheels go on with the spacers facing inward.

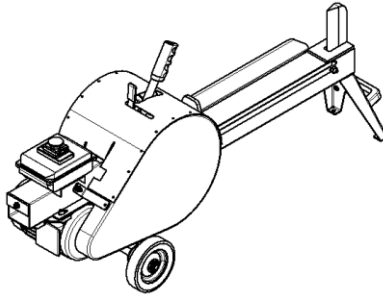


ck if the flywheel is hit too hard. If try using two hammers to spread

STEP 6: Replace Belt and Safety Shroud

1. Hook the belt (4) on the pulley. Place the belt on the flywheel and turn the flywheel until the belt slips on.
2. Replace the safety shroud making sure the four mounting brackets are on the outside of the shroud.

Note: Some units may have a double V-pulley. Make sure the belt goes in the inner groove, closest to the motor.



WARRANTY

Timber Champ warrants to original Purchaser that its product is free from major defects in material under normal use and service for a period of 1 Year from the date the product is purchased. Warranty is void if product has been disassembled by unauthorized personnel. Timber Champ obligation under this warranty is to repair or replace defective product upon approval of our warranty service department that warranty claim is valid. Product shall be returned upon request of Timber Champ. Transportation charges to be prepaid by seller. Timber Champ assumes no responsibility for outside labor.

THE GOODS SOLD PURSUANT TO THIS AGREEMENT ARE SOLD AS IS BY TIMBER CHAMP. TIMBER CHAMP MAKES NO WARRANTY. THE ONLY WARRANTY IS THAT OF THE MANUFACTURER AND THE PURCHASER MUST LOOK SOLELY TO THE MANUFACTURER FOR WARRANTY. THERE SHALL BE NO LIABILITY FOR PRODUCT LIABILITY OR LIABILITY ON THE PART OF TIMBER CHAMP FOR ANY GENERAL, SPECIAL OR CONSEQUENTIAL DAMAGES ARISING OUT OF THE SALE OR USE OF ANY PRODUCTS SOLD HEREUNDER. TIMBER CHAMP MAKES NO WARRANTIES, EXPRESS OR IMPLIED, (INCLUDING, BUT NOT LIMITED TO, ANY WARRANTY OF MERCHANTABILITY OR FITNESS OF THE PRODUCTS FOR ANY PURPOSE) WITH RESPECT TO THE PRODUCTS COVERED BY THIS AGREEMENT EXCEPT AS IN THIS PARAGRAPH OTHERWISE EXPRESSLY PROVIDED. THIS IS THE SOLE AND ONLY WARRANTY OF TIMBER CHAMP LOG SPLITTER AND NO OTHER WARRANTY IS APPLICABLE, EITHER EXPRESSED OR IMPLIED, IN FACT OR BY LAW, INCLUDING ANY WARRANTY AS

TO MERCHANTABILITY OR FITNESS FOR A PARTICULAR USE OR PURPOSE.

This warranty shall not be interpreted to render Timber Champ liable for injury or damages of any kind or nature, direct, consequential, or contingent, to person or property. The sole and only remedy in regard to any defective products shall be the replacement thereof herein provided, and Timber Champ shall not be liable for any consequential, special, incidental or punitive damages resulting from or caused by any such defects.

Timber Champ reserves the right to make improvements in design or changes in specifications at any time, without incurring any obligations to owners of units previously sold. No one is authorized to alter, modify, or enlarge this warranty nor the exclusions, limitations, and reservation.

TIMBERCHAMP

15000 W 44th Avenue Suite B.
Golden, CO 80403

Customer Service: 720-437-7640

Email: customerservice@tooltuffdirect.com

REGISTRATION

WARRANTY VOID IF REGISTRATION IS NOT MAILED WITHIN 15 DAYS OF PURCHASE DATE.

Fill out this page and mail to the address below.

Also found at www.tooltuffdirect.com

Log Splitter Model # _____
Log Splitter Serial Number # (found on the side of the motor 10-11 digits) _____
Purchase Date ___/___/___
Purchased From: _____
Purchaser: _____
Owner's Address: _____
City: _____ ST: _____ Zip Code: _____
Phone: _____ Email: _____

*****Attach a Copy of Proof of Purchase*****

Acceptance of responsibility:

I (Purchaser) have read operators manual and Limited Warranty or someone has read/and explained all instructions to me. I understand this warranty does not cover any labor and that all disputes will be settled by binding arbitration. Warranty void if any attempt to repair or replace defective parts has been made by unauthorized personnel. I have received my Owner's Manual and fully understand my requirements. The mark next to each item below confirms my acceptance of responsibility for the use and maintenance of this Log Splitter. I understand that I alone am responsible for proper maintenance, care and safe operation of this Log Splitter.

Received and read or will read Operators Manual Specifically Safe Operation section
 Specifications accepted
 Controls understood
 Maintenance Requirements understood
 Storage of Log Splitter

I (purchaser) also understand that persons not familiar with the operation of this equipment should not be allowed to use it. Children especially should not operate or be near equipment. ANYONE OPERATING EQUIPMENT SHOULD HAVE READ ALL EQUIPMENT OPERATIONS MANUALS AND SAFETY MANUALS.

Is Log Splitter used in a business NO YES If yes, business type: _____

Owners Signature: x _____ Date: ___/___/___

It is recommended that a copy of the registration be given to the seller.

You must sign this warranty and mail copy to **Timber Champ, 15000 W 44th Avenue Suite B. Golden, CO, 80403**. This warranty is not effective unless the Purchaser mails this Registration and Warranty Form **within 15 days of purchase**. NOTE: The Manufacturer may refuse warranty of any kind unless Timber Champ receives a completed, legible and signed warranty registration. It is the responsibility of the purchaser to assure that this registration document is received by Timber Champ.



www.tooltuffdirect.com

15000 W 44th Avenue Suite B.
Golden, CO 80403

Customer Service: 720-437-7640

Email: customerservice@tooltuffdirect.com