

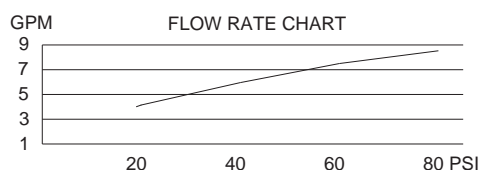
## SPECIFICATIONS

### SINGLE HANDLE PRESSURE BALANCE TUB & SHOWER FAUCET

#### Description

- Single handle
- Self-cleaning two-function showerhead
- 1/2" slip spout fits 1/2" copper or 1/2" IPS stub-out
- Diverter on spout
- Back to back installation capabilities

#### Flow & Valving



#### Standards

- ASME A112.18.1
- CSA B125
- ASSE 1016
- Energy policy act of 1992
- Listed IAPMO/UPC
- ADA Accessibility Guidelines for Buildings and Facilities - 4.27.4 Controls and Mechanisms

#### Warranty

Danze faucets are covered by a manufacturer's limited "lifetime" warranty for manufacturing defects



D510056 (shown)  
BANNOCKBURN™



#### With Stops:

D510056 (Tub/Shower)  
D500556 (Shower only)

#### Less Stops:

D520056 (Tub/Shower)  
D520556 (Shower only)

#### Available Colors & Finish

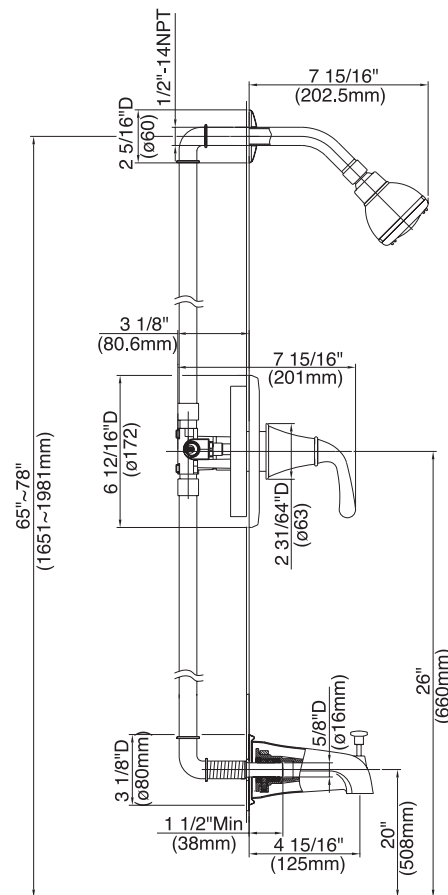
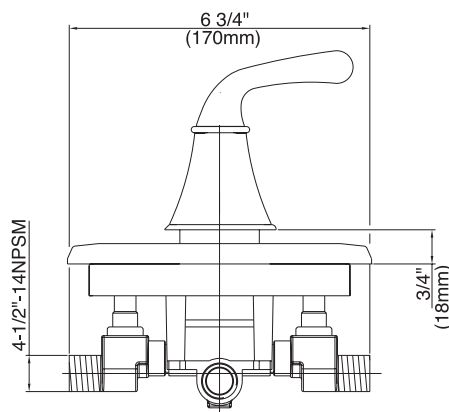
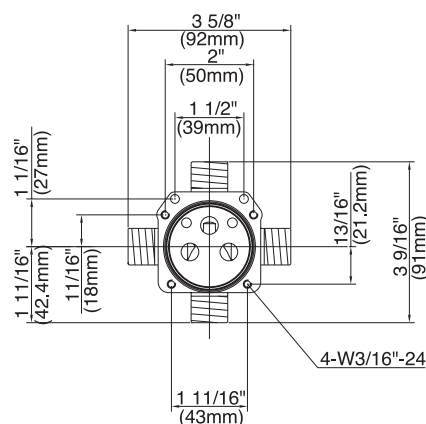
- Chrome
- Brushed Brass (BBV)
- Brushed Nickel (BN)

#### Trim Kits: (for use w/pressure balance valves)

D510056T (Tub/Shower trim)  
D500556T (Shower only trim)  
D500656T (Tub trim w/valve escutcheon)

#### Special Packaging

- This product also available with valve packaged separate from trim.
- Use with single handle pressure balance valves:  
D112000BT (w/stops)  
D115000BT (w/o stops)
- Valves are combination 1/2" copper sweat, 1/2" NPT threaded connectors for all ports.

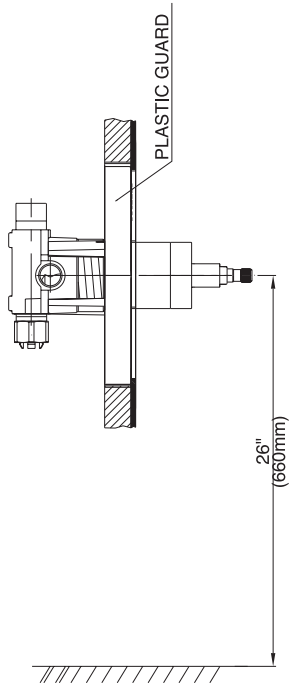


Specific Features: \_\_\_\_\_ Submitted Model No.: \_\_\_\_\_

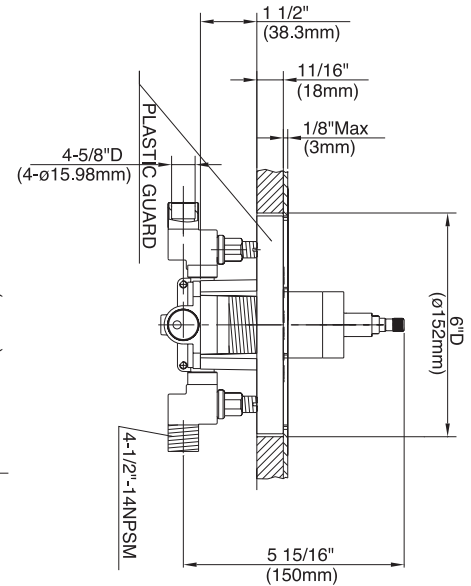
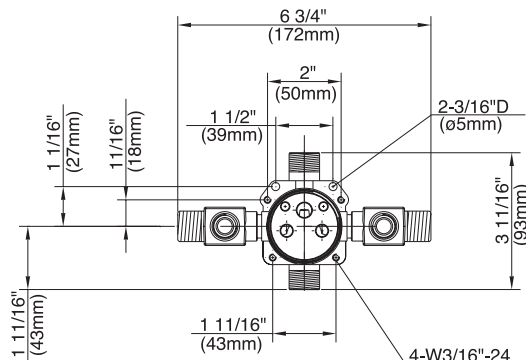
SD510056/04-04.01

**SINGLE HANDLE PRESSURE BALANCE TUB & SHOWER VALVES**

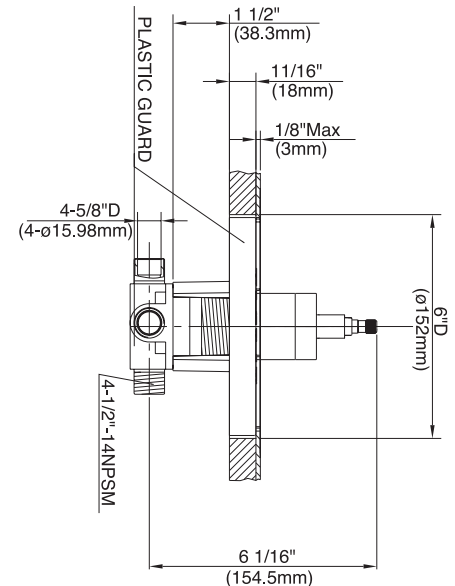
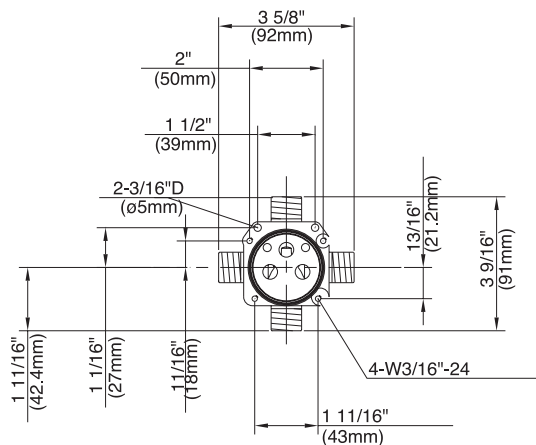
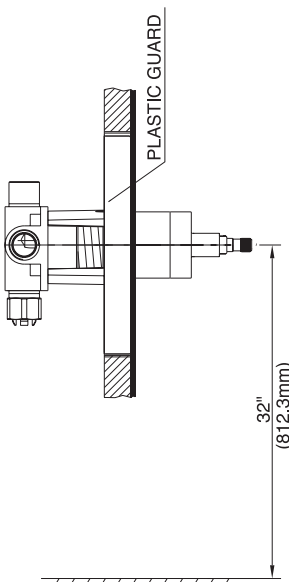
**Critical Dimensions : Rough-in valve D112000BT (w/stops) & D115000BT (w/o stops)**



**W/SCREWDRIVER STOPS**



**LESS/SCREWDRIVER STOPS**



Specific Features: \_\_\_\_\_ Submitted Model No.: \_\_\_\_\_

SD510056/04-04.01