

Features

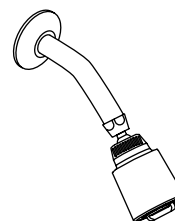
- *Metal construction*
- *Includes showerhead with arm and flange, faceplate, and lever handle*

Codes/Standards Applicable

Specified model meets or exceeds the following:

- ASME A112.18.1/CSA B125.1
- ASSE 1016

SHOWER FAUCET TRIM K-T15611



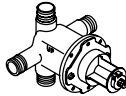
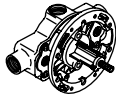
Colors/Finishes

- CP: Polished Chrome
- PB: Vibrant[®] Polished Brass
- Other: Refer to Price Book for additional colors/finishes

Accessories:

- NA: None applicable

Specified Model

Model	Description	Colors/Finishes		
K-T15611-4	Shower faucet trim with lever handle	<input type="checkbox"/> CP	<input type="checkbox"/> PB	<input type="checkbox"/> Other_____
Required Accessories		 		
K-304-*	Rite-Temp® valve OR	<input type="checkbox"/> NA		
K-2971-KS	HiFlow Rite-Temp valve with stops		<input type="checkbox"/> NA	
* For a complete listing of all the RiteTemp valves, refer to the K-304-* Specification Sheet or Roughing-In Sheet.				
Optional Accessories				
88526	HiFlow Rite-Temp® thin wall installation kit	<input type="checkbox"/> CP		<input type="checkbox"/> Other_____

Product Specification

The single-control shower faucet trim shall be made of metal construction. Product shall include showerhead with arm and flange, and faceplate with lever handle. Faucet trim shall be Kohler Model K-T15611-____-____ and mixing valve shall be Kohler Model K-____-____-NA.

CORALAIS®

Installation Notes

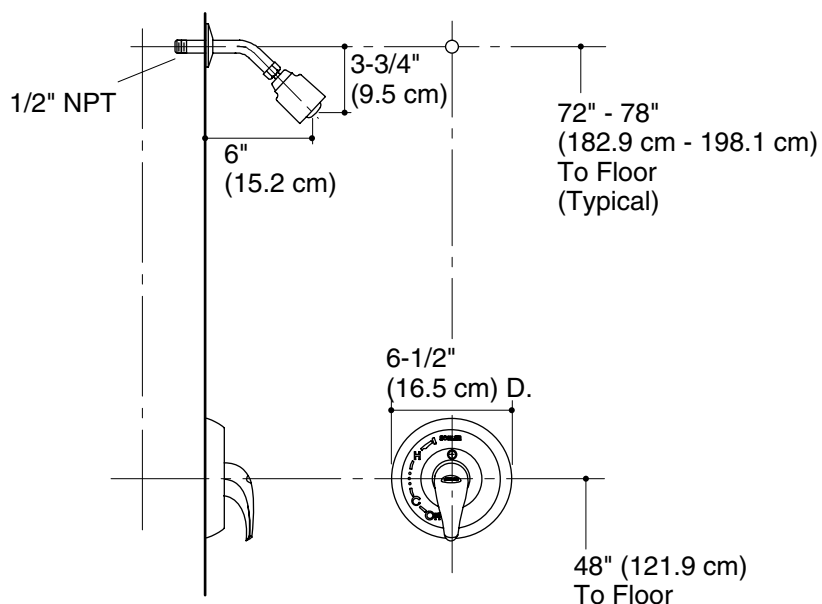
Install this product according to the installation guide.

NOTICE: Risk of product damage. Long screws, for installing trim, can damage the K-2971-KS valve. Consult the trim installation guide to verify if the thin wall installation kit (88526) is needed.

Avoid cross-flow conditions. Do not install shut-off device on either valve outlet.

Cap shower outlet if deck-mount spout, diverter, or handshower is connected to spout outlet.

Install straight pipe or tube drop of 7" (17.8 cm) to 18" (45.7 cm) with single elbow between valve and wall-mount spout.



Product Diagram