

Features

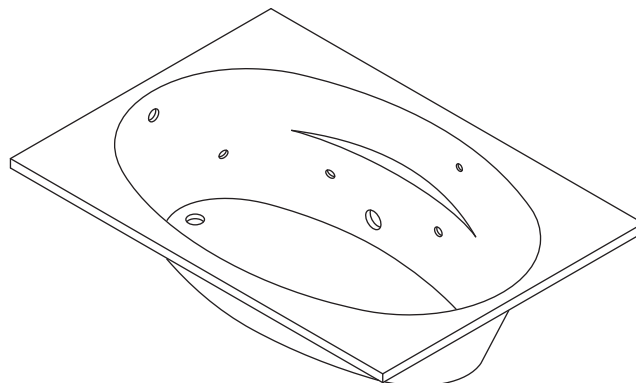
- Acrylic
- Drop-in
- Pump with air switch and grounding-type plug-in cord
- 6 individually adjustable ProFlex® hydro-massage jets
- In-line heater
- Molded lumbar supports and armrests
- Custom pump locations
- Optional K-9696 whirlpool trim kit in various finishes
- Optional K-1284 removable apron
- 60" (1524 mm) x 42" (1067 mm) x 18-1/8" (460 mm)

Codes/Standards Applicable

Specified model meets or exceeds the following:

- ASME A112.19.7
- UL 1795
- ASTM E162
- ASTM E662
- CSA B45.5/IAPMO Z124

CUSTOM BATH WHIRLPOOL WITH HEATER K-1126-HN



Colors/Finishes

- 0: White
- Other: Refer to Price Book for additional colors/finishes

Accessories

- 0: White
- CP: Polished Chrome
- Other: Refer to Price Book for additional colors/finishes

Specified Model

Model	Description	Colors/Finishes	
K-1126-HN	Custom bath whirlpool – drop-in	<input type="checkbox"/> 0	<input type="checkbox"/> Other_____
Recommended Accessories			
K-7213	Clearflo bath cable drain with PVC tubing	<input type="checkbox"/> CP	<input type="checkbox"/> Other_____
K-7214	Clearflo bath cable drain without PVC tubing	<input type="checkbox"/> CP	<input type="checkbox"/> Other_____
K-11677	Adjustable trip lever drain	<input type="checkbox"/> CP	
Optional Accessories			
K-1284	Removable apron	<input type="checkbox"/> 0	<input type="checkbox"/> Other_____
K-9696	Jet trim kit (metal finishes)	<input type="checkbox"/> CP	<input type="checkbox"/> Other_____

Product Specification

The drop-in acrylic bath whirlpool shall be 60" (1524 mm) in length, 42" (1067 mm) in width, and 18-1/8" (460 mm) in height. Product shall have 6 individually adjustable ProFlex hydro-massage jets, a pump with air switch and grounding-type plug-in cord, and an in-line heater. Product shall have custom pump locations and molded lumbar supports and armrests. Product shall have an optional K-1284 removable apron and optional K-9696 whirlpool trim kit in various finishes. Bath whirlpool shall be Kohler Model K-1126-HN-_____.

PROFLEX® 6042

Technical Information

Fixture*:	
Basin area:	
Bathing well	46" (1168 mm) x 21" (533 mm)
Top area	55" (1397 mm) x 31" (787 mm)
Weight	72.5 lbs (32.9 kg)
To overflow:	
Water depth	14" (356 mm)
Capacity	57 gal (215.8 L)
* Approximate measurements for comparison only.	

Drop-in cut-out	58-1/4" (1480 mm) x 40-1/2" (1029 mm)
-----------------	---------------------------------------

Pump:		V	Hz	A
1-speed		120	60	7.5
Heater:	kW	V	Hz	A
	1.5	120	60	12.5

Required Electrical Service

Two dedicated circuits required, each protected with Class A Ground-Fault Circuit-Interrupter (GFCI):

Pump/control 120 V, 15 A, 60 Hz

Heater 120 V, 15 A, 60 Hz

Locate the outlets behind the whirlpool and within 24" (610 mm) of the pump and heater.

Installation Notes

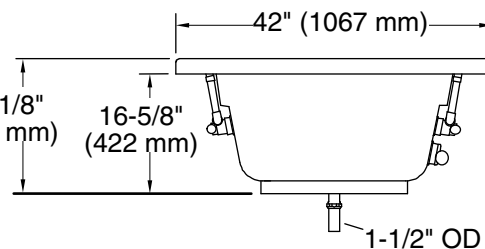
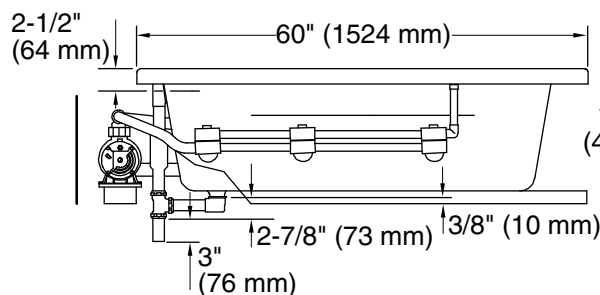
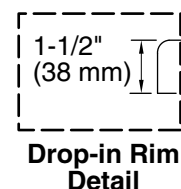
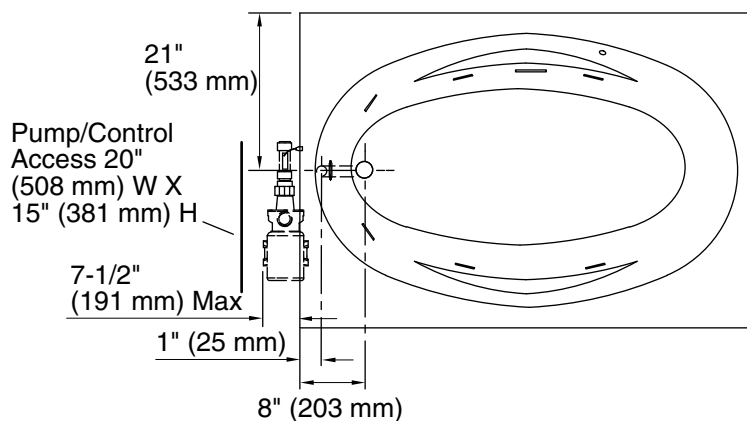
Install this product according to the installation guide.

Floor support under whirlpool must provide for a minimum of 33 lbs/square foot (160 Kg/square meter) loading.

The apron must be installed before the finished floor and wall materials are installed.

Pump must be relocated to custom position at the time of installation. Provide adequate clearance.

No change in measurements if connected with drain illustrated. (K-11677 or K-11677M)



Product Diagram