

### Features

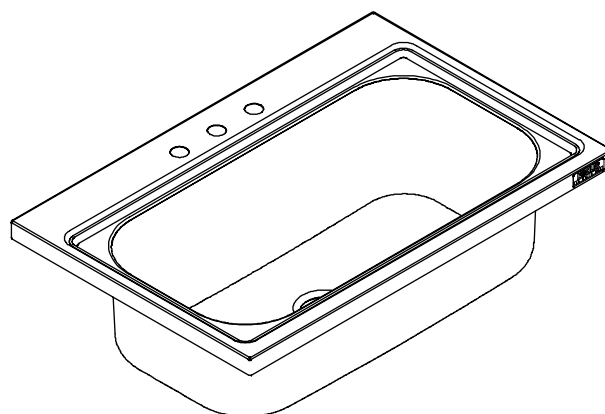
- 18-gauge stainless steel
- Flush-mount
- Single compartment
- 3-hole
- Includes installation hardware
- 39" (99.1 cm) x 25-3/4" (65.4 cm)

### Codes/Standards Applicable

Specified model meets or exceeds the following:

- ASME A112.19.3/CSA B45.4

## STAINLESS STEEL SINK K-3375



### Colors/Finishes

- NA: None applicable

#### Accessories:

- CP: Polished Chrome
- ST: Stainless Steel
- NA: None applicable
- Other: Refer to Price Book for additional colors/finishes

### Specified Model

Model	Description	Colors/Finishes
K-3375-3	Stainless steel sink, 3-hole	<input type="checkbox"/> NA

#### Recommended Accessories

K-6330	ProMaster™ faucet	<input type="checkbox"/> CP
K-8801	Duostrainer® sink strainer	<input type="checkbox"/> CP <input type="checkbox"/> Other _____
K-8813	Stainless steel sink strainer	<input type="checkbox"/> CP
K-8814	Stainless steel sink strainer	<input type="checkbox"/> CP
K-9000	P-Trap (2 traps recommended)	<input type="checkbox"/> CP

#### Optional Accessories

K-2989	Countertop cutting board	<input type="checkbox"/> NA
K-3138	Hardwood cutting board	<input type="checkbox"/> NA
K-3139	Folding wire rack	<input type="checkbox"/> ST
K-3144	Wire mesh colander	<input type="checkbox"/> ST

### Product Specification

The single compartment sink shall be 39" (99.1 cm) in length and 25-3/4" (65.4 cm) in width. Sink shall be made of 18 gauge stainless steel. Sink shall feature 3-hole faucet punching. Sink shall be flush-mount and include installation hardware. Sink shall be Kohler Model K-3375-3.

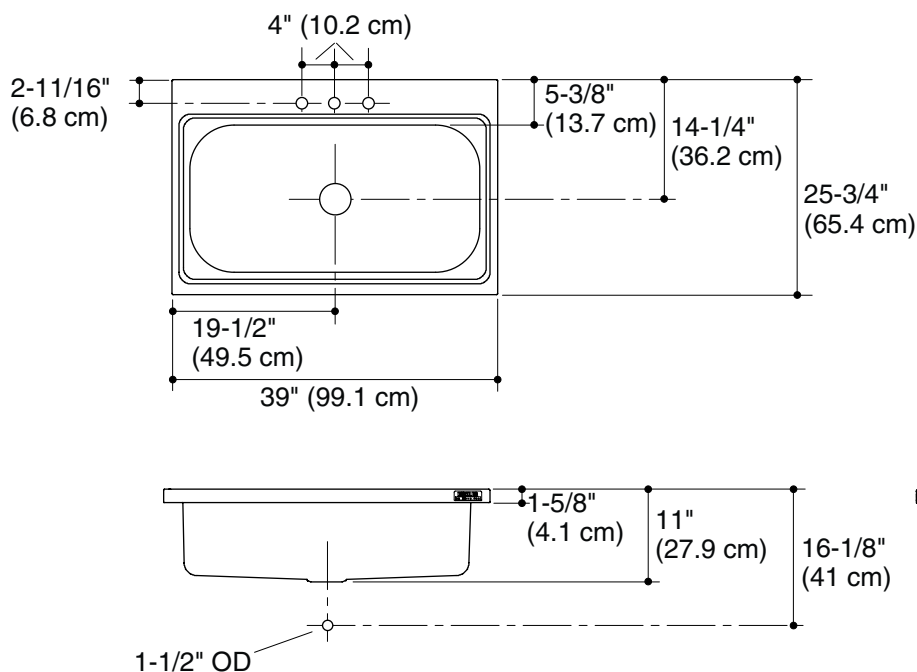
# PRO TASKSINK™

## Technical Information

Fixture*:	
Basin area	34-7/8" (88.6 cm) x 17-3/8" (44.1 cm)
Water depth	10-3/4" (27.3 cm)
Drain hole	3-5/8" (9.2 cm) D.
Faucet holes	1-3/8" (3.5 cm) D.
*Approximate measurements for comparison only.	
Included components:	
Installation hardware	87357

## Installation Notes

Install this product according to the installation guide.



## Product Diagram