

KOHLER®

Roughing-In

K-T6808, K-T6809, K-T6810 IV GEORGES BRASS® BATH AND SHOWER FAUCET TRIM

Product Information

Applicable faucet trim only:	
Bath and shower cross handle	K-T6808-3D
Bath and shower lever handle	K-T6808-4D
Shower cross handle	K-T6809-3D
Shower lever handle	K-T6809-4D
Valve cross handle	K-T6810-3D
Valve lever handle	K-T6810-4D
Rite-Temp® valve must be ordered to complete faucet.	

Required accessories:	
Rite-Temp® valve without stops OR	K-304-*
HiFlow Rite-Temp valve with stops	K-2971-KS
Ceramic dial faceplate (For -3D and -4D)	K-146
* For a complete listing of all the RiteTemp valves, refer to the K-304-* Specification Sheet or Roughing-In Sheet.	

Optional accessories:	
IV Georges Brass accent kit (For K-6808-3D)	K-6791
IV Georges Brass accent kit (For K-6808-4D)	K-6798
Deep roughing-in kit for K-304 valve (lever handles)	58223
Deep roughing-in kit for K-304 valve (cross handles)	58224
HiFlow Rite-Temp® thin wall installation kit	88526

Installation Notes

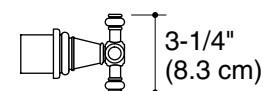
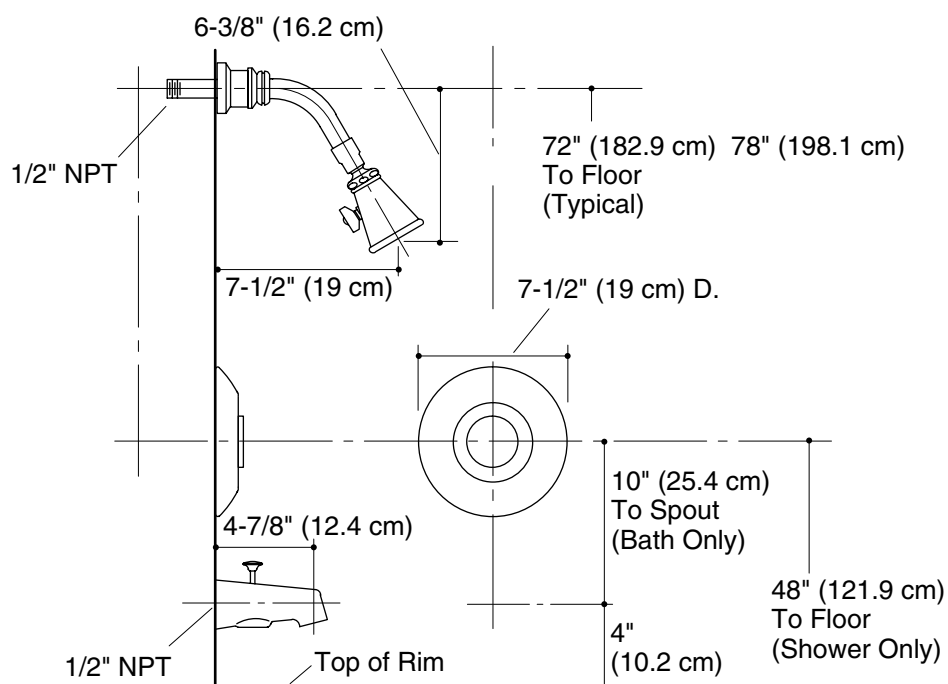
Install this product according to the installation guide.

NOTICE: Risk of product damage. Long screws, for installing trim, can damage the K-2971-KS valve. Consult the trim installation guide to verify if the thin wall installation kit (88526) is needed.

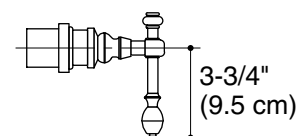
Avoid cross-flow conditions. Do not install shut-off device on either valve outlet.

Cap shower outlet if deck-mount spout, diverter, or handshower is connected to spout outlet.

Install straight pipe or tube drop of 7" (17.8 cm) to 18" (45.7 cm) with single elbow between valve and wall-mount spout.



Cross



Lever