

INSTALLATION INSTRUCTIONS



Elements Installation Instructions

March 26, 2012

PRIOR TO INSTALLATION

- Carefully check flooring material for any defects. Contact your supplier immediately if any defect is found.
- Remove quarter round, baseboard molding or cove base.
- Undercut doorway moldings the thickness of the flooring.

WOOD SUBSTRATES

Wood floors must be double construction with a minimum thickness of 1". Top layer of plywood shall be ¼" minimum thickness underlayment grade plywood. Tarkett recommended underlayments include APA Underlayment Grade Plywood A-C, B-C or C-C Plugged, ACCU-PLY, SurePly, TECPLY, ULAY, C.S.A. (CanPly) and Proboard

CONCRETE SUBSTRATES

Flooring may be installed over on grade, above grade or below grade concrete subfloors. Concrete floors shall be constructed in accordance with the American Concrete Institute (ACI) 302.1 Guide for Concrete Floor and Slab Construction. Concrete shall be finished and cured according to ACI and have a minimum compressive strength of 3500 psi. Floors must be free of any sealers, curing, hardening or parting compounds that would adversely affect the adhesive when using the Full Spread Installation System. Installation of moisture vapor barrier is recommended prior to pouring of on or below grade slabs. Moisture vapor transmission shall not exceed 3 lbs./1000 sq.ft./24 hours per ASTM F-1869 (Anhydrous Calcium Chloride Test). Moisture may also be tested according to ASTM F 2170 (Standard Test Method for Determining Relative Humidity in Concrete Floor Slabs Using *in situ* Probes). When tested according to this method, the internal relative humidity shall not exceed 75%.

Do not install flooring over gypsum based underlayments.

EXISTING FLOORS

Flooring may be installed over a single layer of non-cushioned existing resilient flooring. Check existing floor for any curled areas around the perimeter or at seams and repair if necessary. Use of a good quality, cementitious based embossing leveler to fill and level any irregularities.

SUBSTRATE PREPARATION

- All substrates must be dry, clean, smooth and level.
- Fill and level all plywood seams and concrete cracks, construction joints, control joints, depressions, grooves or other irregularities with a cementitious based patching compound.
- Sweep and/or vacuum substrate to remove all dust and debris.

WARNING: Do not sand, dry sweep, dry scrape, drill, saw, beadblast or mechanically chip or pulverize existing resilient flooring, backing, lining felt or asphaltic "cutback" adhesive. These products may contain asbestos fibers or crystalline silica. Avoid creating dust. Inhalation of such dust is a cancer and respiratory tract hazard. Smoking by individuals exposed to asbestos fibers greatly increases the risk of serious bodily harm. Unless positively certain that the product is a non-asbestos containing material, you must presume it contains asbestos. Regulations may require that the material be tested to determine asbestos content.

GENERAL INFORMATION

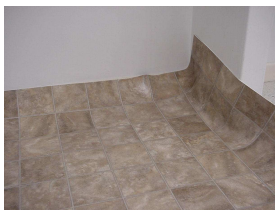
- Flooring shall be rolled face out on a sturdy core until time of installation.
- Room temperature, flooring and adhesive shall be maintained between 65° - 85°F for 48 hours before, during and after installation.
- Undercut door moldings to allow flooring to fit loose and freely under the molding.

INSTALLATION

- Measure the room and precut the flooring allowing extra material for trimming.
- Unroll the flooring and position in the room so the pattern is aligned squarely with walls.



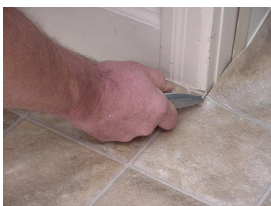
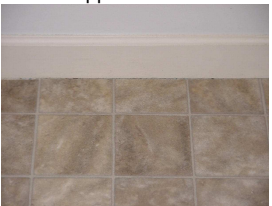
THE ULTIMATE
FLOORING EXPERIENCE



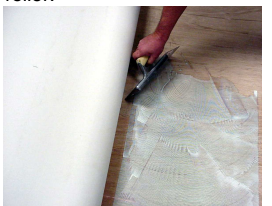
- Using a sharp, sturdy utility knife, make relief cuts at inside and outside corners.



- Trim the flooring around the perimeter of the room. Trim around door mouldings leaving flooring slightly longer. Flooring can be slid under door moulding after adhesive has been applied



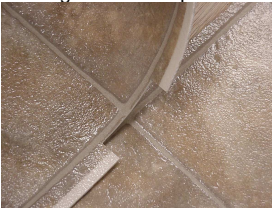
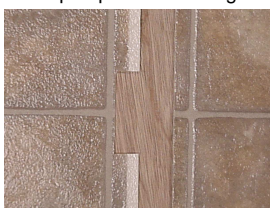
- After flooring has been fit, fold or loosely roll the flooring back to expose one half of the subfloor. Make sure the sheet does not move or shift. Apply recommended adhesive evenly over substrate. Apply adhesive according to manufacturer's recommendations. Roll flooring with a 75-100 lb. sectional floor roller.



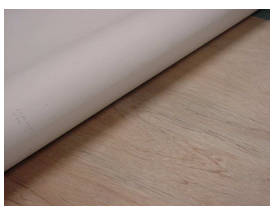
- Fold or loosely roll back the second half of flooring. Apply adhesive to remaining area, position flooring and roll with a 75-100 lb. sectional floor roller.

SEAMING

- Cut and position second piece of flooring. Be sure to allow extra material for pattern match.
- Align match marks along factory edge accordingly. Overlap seam edges and obtain exact pattern match. Place masking tape at seam overlap to prevent flooring from moving. Fit second piece of flooring.



- After second piece of flooring has been fit, remove masking tape from seam area. Mark the substrate along factory edge with a pencil.
- Fold or loosely roll back each piece of flooring lengthwise to expose the entire seam area. Apply recommended adhesive over the exposed substrate. Apply adhesive according to manufacturer's recommendations. Position flooring into adhesive. Roll flooring in both directions with a 75-100 lb. sectional floor roller except for 6" on either side of the seam.



- **Seams are cut using the double-cut wet method.**
- Lay a straight edge along center of seam overlap or grout line. Using the straight edge as a guide, cut through both sheets of flooring with a sharp, sturdy utility knife held to produce a vertical cut. Do not tilt knife blade. When installing over an existing floor, do not cut into the existing floor. Lift top edge of flooring and carefully remove bottom salvage. Position seam and roll seam area thoroughly.
- **NOTE: Do not contaminate seam edges with adhesive.**



- Fold or loosely roll back the second half of flooring on each side. Apply adhesive to remaining areas, position flooring and roll with a 75-100 lb. sectional floor roller.
- Seal seams with recommended seam sealer. Protect seam from traffic for a minimum of 8 hours.



FINISHING THE JOB

- It is recommended that all exposed edges be covered. Install wood moldings or cove base around the perimeter to cover the space.
- Use transition moldings at doorways or where the new flooring meets an existing floor.
- Do not move or roll furniture and appliances directly over floor. Always place plywood or hardboard panels on floor when moving furniture or appliances.
- Maintain post installation temperature between 55° F and 100° F. Maintain relative humidity between 40% and 70%.

CARE AND MAINTENANCE

- Check furniture to be sure the legs are equipped with proper rests and are of sufficient size to prevent permanent indentations.
- Sweep and /or vacuum any dirt or debris that can abrade or scratch the floor. Use a soft brush, dust mop or vacuum.
- Light daily sweeping or vacuuming will help maintain the floors original gloss by removing any grit particles, which can affect the normal gloss.
- Wipe up spills promptly and thoroughly with a clean, damp cloth. Spills are easier to remove if wiped up immediately.
- When necessary, wash the floor with a neutral floor cleaner.
- Use non-staining walk-off mats at outside entrances to prevent dirt and debris from being tracked onto the floor. Discoloration of the flooring may occur from rubber backings and dyes used in floor mats and rugs.
- As with other household furnishings, repeated exposure to direct sunlight may cause bleaching or discoloration. When possible, close drapes or blinds during peak sunlight hours to block direct sunlight.