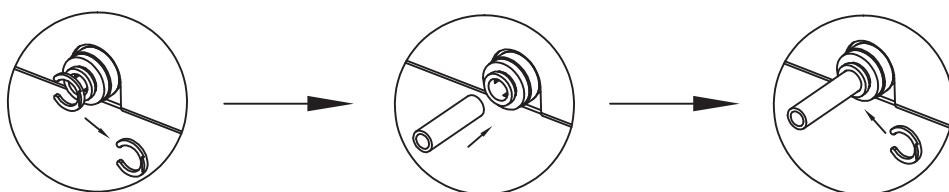


Installation Instructions

1. Connect the water supplying pipe to the unit.

Step1. First, remove the blue clipper at the inlet of the inlet valve, then insert the PEX pipe into the inlet of the inlet valve, reinstall the clipper.

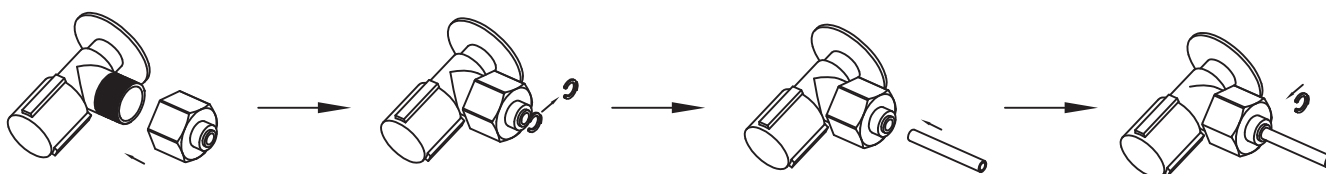


First remove the blue clipper

Insert the PEX pipe

reinstall the clipper

Step2. Select the appropriate quick connector according to the connector type of the water supply. Connect the other end of the PEX pipe to the water supply.



The quick connector access water supply

Remove the clipper

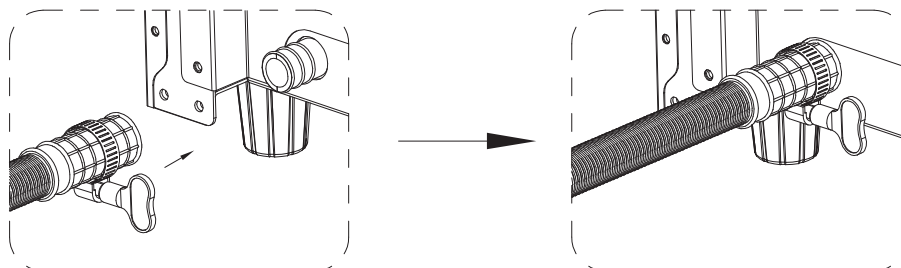
Insert the PEX pipe

reinstall the clipper

2. Connecting the water drain pipe.

Step1. First put the clamp on the fixed end of the drain pipe, then insert the fixed end of the drain pipe into the drain pipe connector, and finally turn clockwise to tighten the clamp.

Step2. Put the other end of the drain pipe into the drain sink.



Insert into drain connector together with clamp

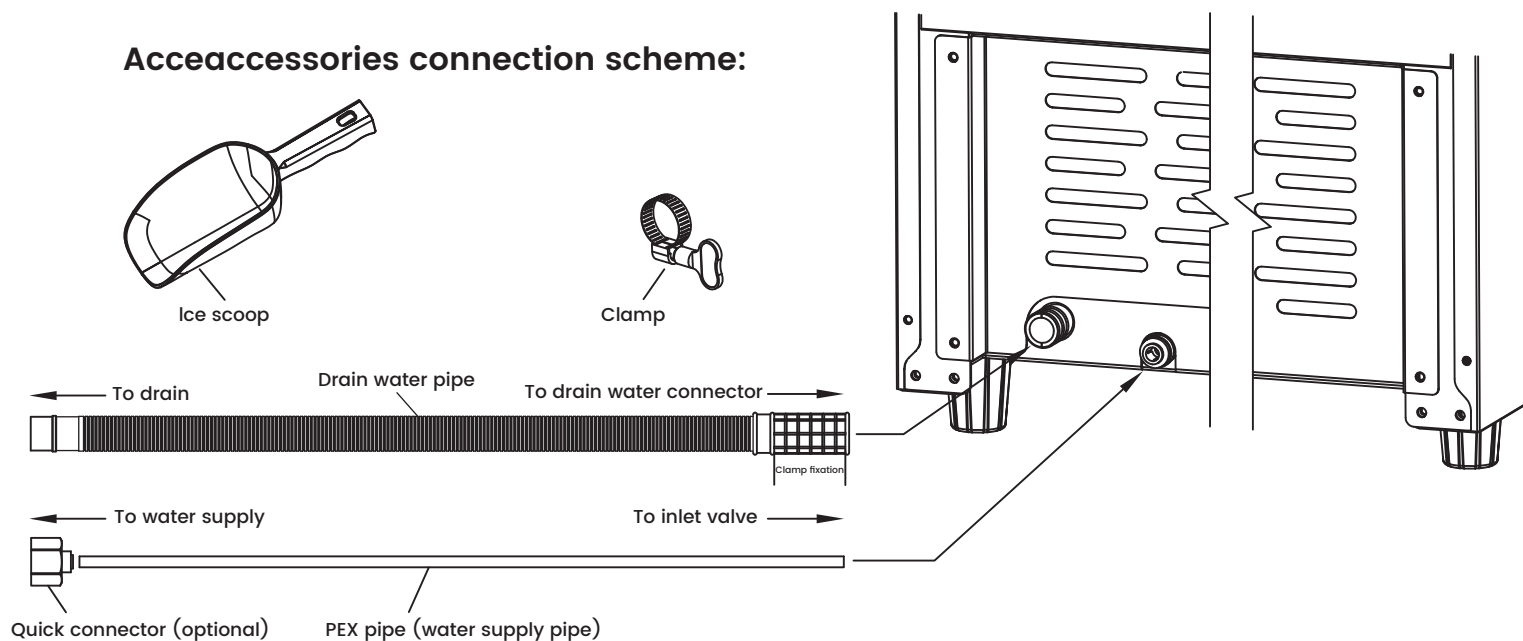
Turn clockwise to tighten the clam


WARNING: Due to the small working space, be careful not to hurt your hand when tightening the clamp.

3. Open the water supply, visually check whether there is water leakage at the connection, if there is no water leakage, connect the appropriate power supply and then turn on.

IMPORTANT: The water pressure of main water supply system must be 0.04-0.8 MPa at least.

Accessories connection scheme:



 Thank you for purchasing this product! If you have questions about the product such as missing parts, damaged products, product assembling and operation etc, please contact us via Amazon Message or customer service phone: 213-4467172 or 661-4358826.