



Brinx®
Top-mount Bar Sink
K-3674

Features

- 21-inch minimum base cabinet width.
- 14-gauge stainless steel.
- Top-mount.
- Single bowl.
- 6-inch depth.
- 18-3/4" (476 mm) diameter.

Optional Accessories

K-8801 Sink Strainer



ADA

Codes/Standards

ASME A112.19.3/CSA B45.4

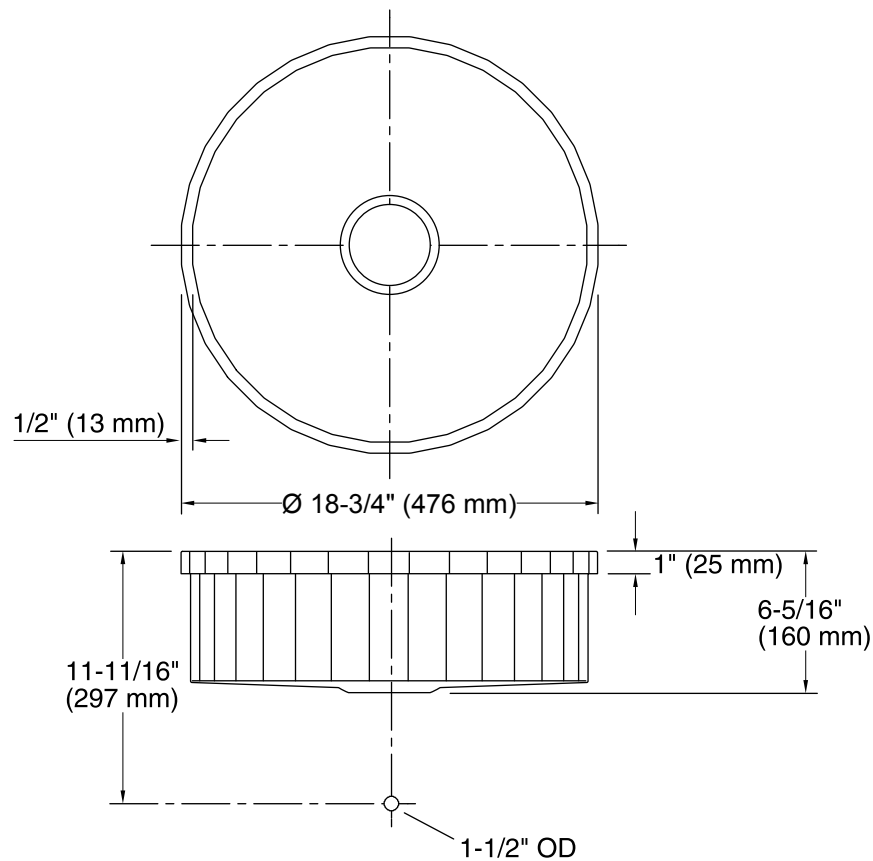
ADA

ICC/ANSI A117.1

Lifetime Limited Warranty for

KOHLER® Stainless Steel Sinks

See website for detailed warranty information.



Technical Information

All product dimensions are nominal.

Bowl configuration:	Single
Installation:	Top-mount
Bowl area (Only):	Diameter: 17-3/4" (451 mm) Bowl depth: 6" (152 mm)
Drain hole:	3-5/8" (92 mm)
Template:	1220554-7, required, included

Notes

Install this product according to the installation instructions.

ADA compliant when installed to the specific requirements of these regulations.