



ZIPPITY

Easy Does It!

NEWPORT VINYL PICKET GATE (42" W X 31"H)

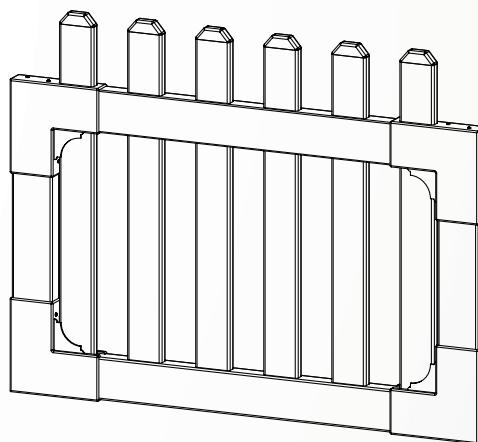
ASSEMBLY INSTRUCTIONS ZP19004

60 MIN

Approximate assembly time

Want to see a video on how to
assemble this product?

Scan the QR code



GENERAL INFORMATION



IMPORTANT

- + Check the inside of the larger pieces in your box for other materials packed inside.
- + When assembling components, place on a non-abrasive surface (i.e. shipping box) to avoid scratching.
- + We recommend an area approximately 5'x 8' for unobstructed assembling.
- + You should not need to use excessive force when assembling components.

MISSING OR DAMAGED PARTS?

VISIT OUR WEBSITE FIRST, SO WE CAN HELP YOU RIGHT AWAY!

Although great care has been taken to ensure proper packaging and handling of this product, occasionally problems occur. If you discover any missing, damaged or defective parts, please visit our website to order replacement parts. If you experience any further trouble with your product, please contact our customer service department.

 parts.nychbrands.com

 support@zippity-outdoor.com

 **704-892-5222 / 877-234-6196**

Customer service agents are available to take calls weekdays from 9am-5pm EST. If you call outside of business hours, please leave a voicemail.

To help you quickly and accurately, please have reference item number **ZP19004** and the specific part name which can be found on page 5. It is helpful if you can provide the batch lot which is a stamped number inside the box.

NEED ASSEMBLY HELP?

If you are having problems with the assembly or installation of this product, we are happy to assist you with the process, **so please give us a call at 704-892-5222 / 877-234-6196.**

NEED TO RETURN?

If for some reason you need to return this product, please allow us to help resolve your issues first. If you still decide to return the product, **you will need to initiate the return from the company you originally purchased from.**

GENERAL INFORMATION

1. Read over fence instructions first.

Your gate and fence will work better together if you first take the time to read and understand your fence.

2. Pre-assemble the gate frame.

Please do not screw the gate frame together until you have temporarily assembled the gate frame. In other words, do a dry run first. This will ensure:

1. That you have everything necessary to complete the gate.
2. That you will have assembled the gate frame in the correct order.
3. All of the pieces fit and function properly.
4. The gate height and width are similar to the measurements shown on page four.

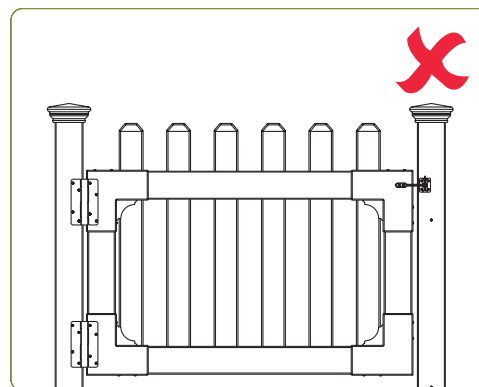
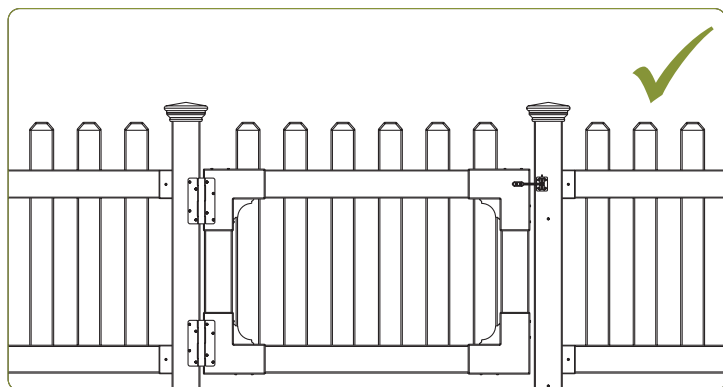
It's easier to troubleshoot when things are not screwed together. After you assemble your gate correctly, please disassemble as necessary, and use the provided Self-Drilling Stainless Steel Screws to permanently assemble the gate.

3. Install your gate posts before your fence posts.

Your fence panels will be more forgiving for a custom fit than your gate. Position and install your gate posts before you do anything else.

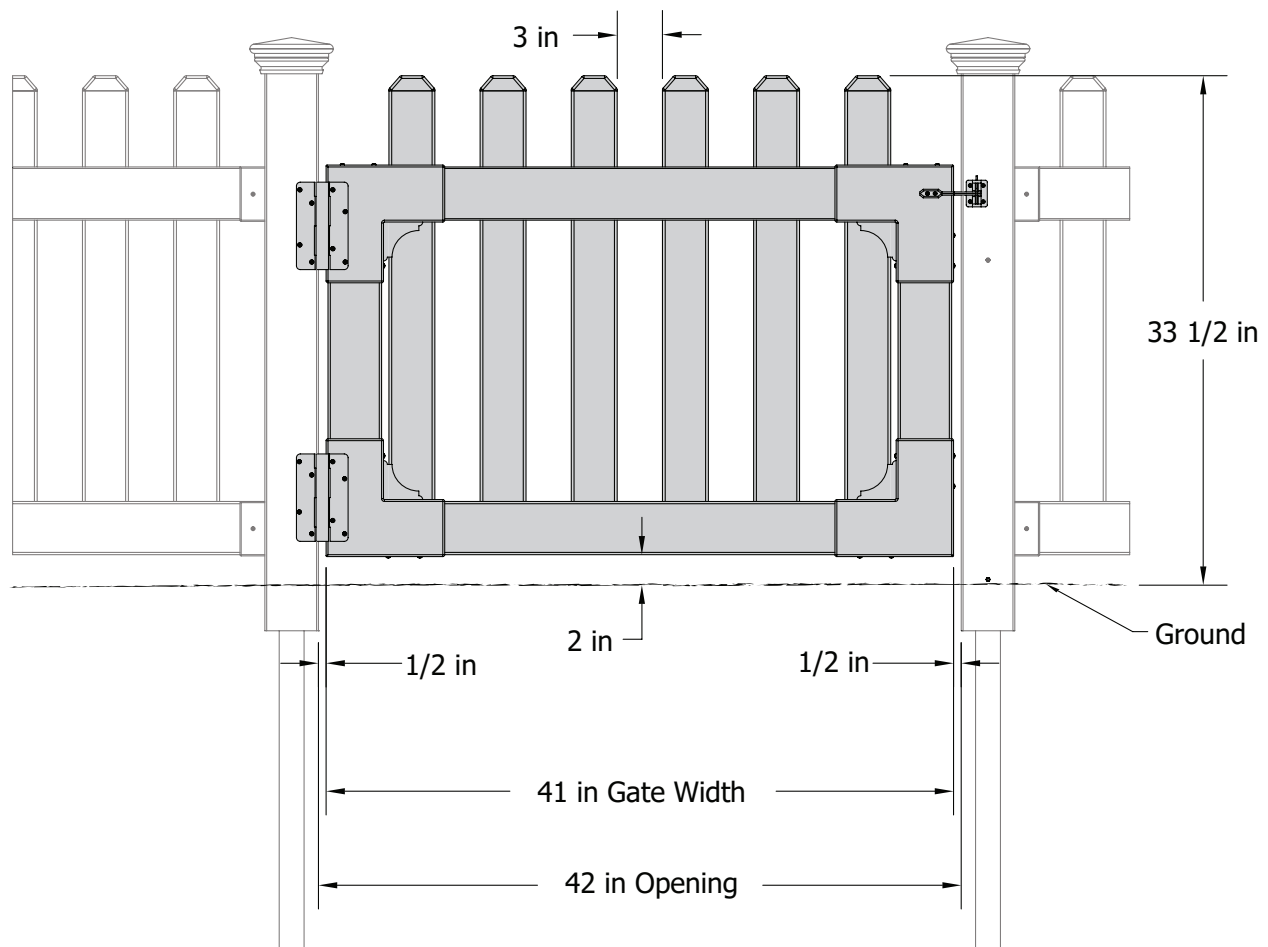
4. Do not hang your gate system off a single non-supported post.

Your gate will perform better and last longer if your hinge post is connected to a panel of fence that is connected to another post. This way, the weight strain will be transferred onto two posts versus just one. Installing fence panels on both sides of your gate is ideal in all situations. If this is not possible because of space restrictions, please contact us for alternative solutions.

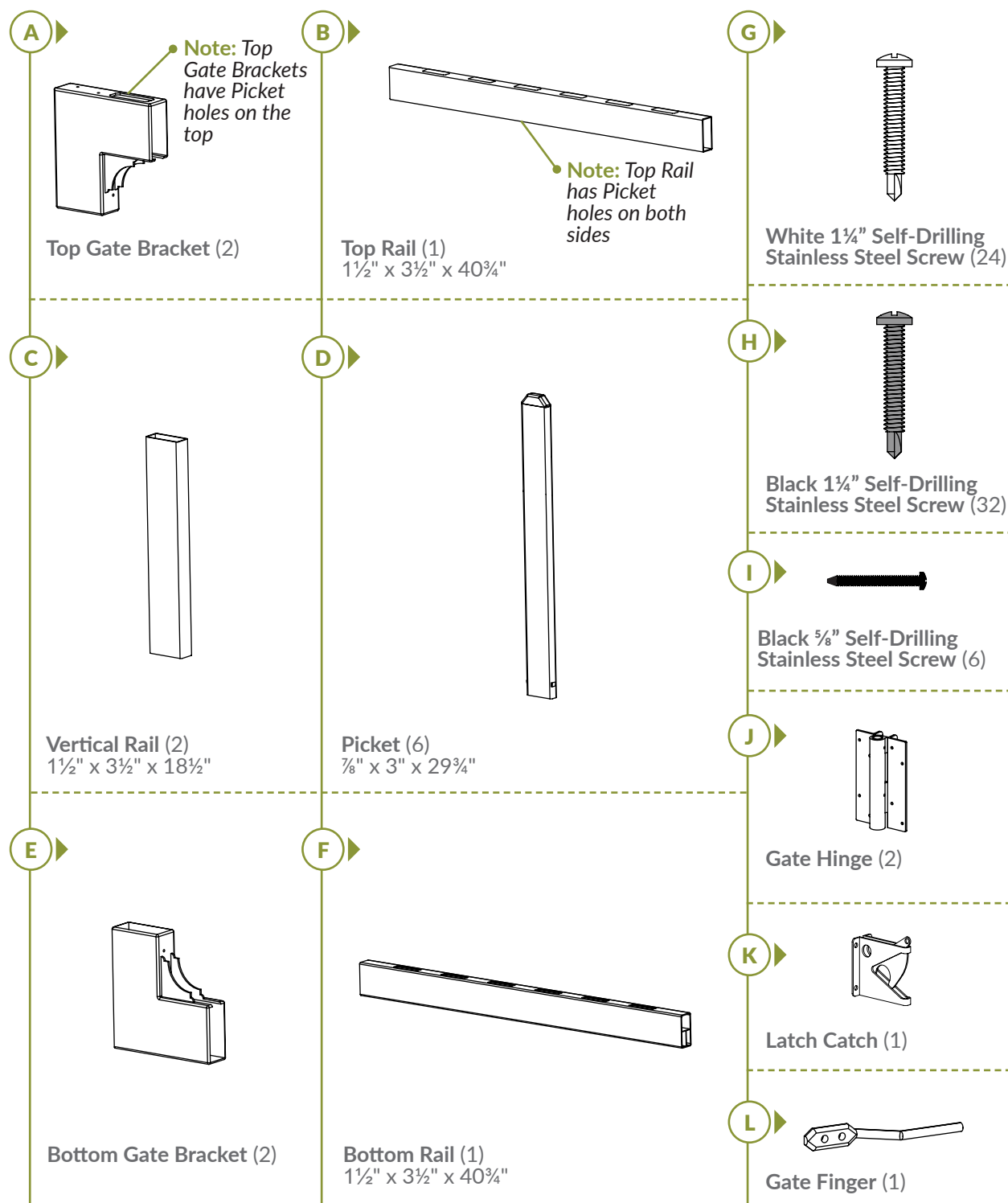


Detailed Product Dimensions & Specifications

Newport Vinyl Picket Gate



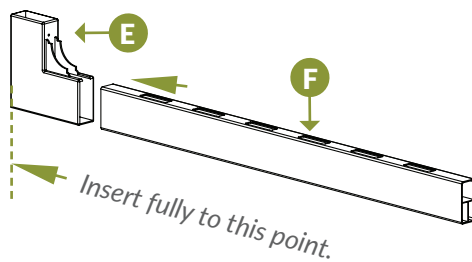
STEP 1: LAY OUT MATERIALS



STEP 2: ASSEMBLE THE BOTTOM OF THE GATE FRAME

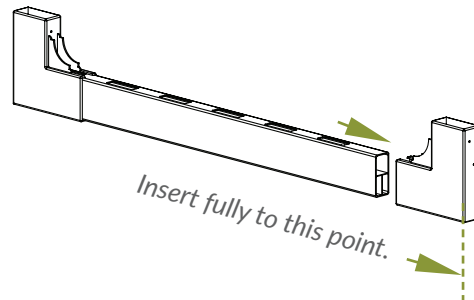
STEP 2.1

► Insert the Bottom Rail (F) all the way into the Bottom Gate Bracket (E) until it hits the corner of the bracket as illustrated.



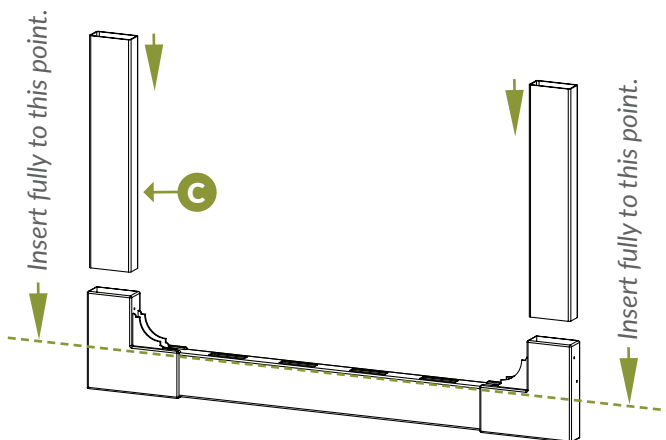
STEP 2.2

► Insert the Bottom Rail all the way into the opposite Bottom Gate Bracket until it hits the corner as illustrated.

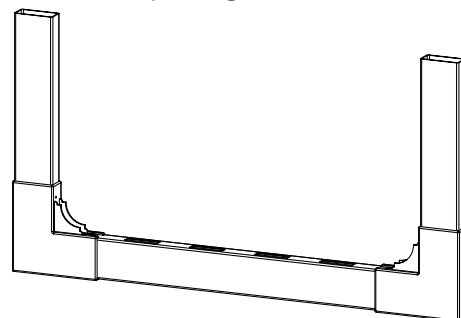


STEP 2.3

► Insert Vertical Rails (C) until they hit the Bottom Rail.

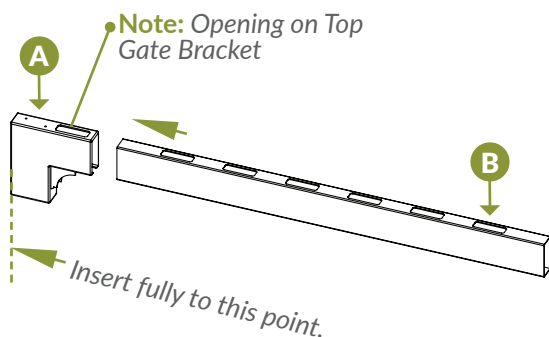


Completed gate bottom.



STEP 3: ASSEMBLE THE GATE FRAME TOP AND ATTACH TO SIDES

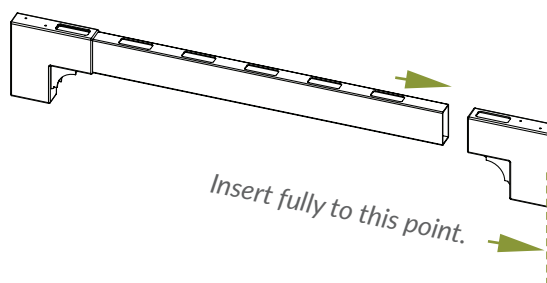
STEP 3.1 ▶



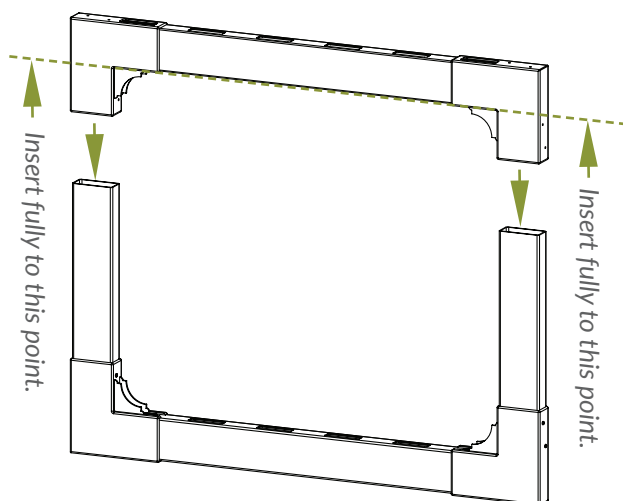
▶ Insert the Top Rail (B) all the way into the Top Gate Bracket (A) until it hits the corner as illustrated.

STEP 3.2 ▶

▶ Insert the Top Rail all the way into the opposite Top Gate Bracket until it hits the corner as illustrated. The last routed hole on each end of the Top Rail should line up with the routed hole in the Top Rail Brackets.

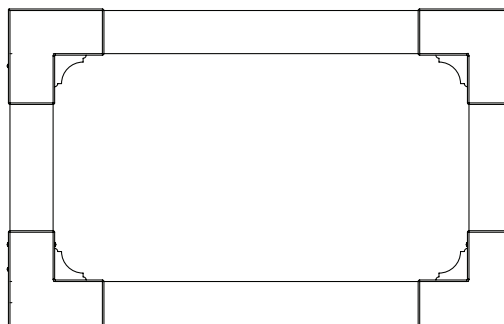


STEP 3.3 ▶



▶ Slide Top Gate Brackets and Top Rail down over the vertical rails.

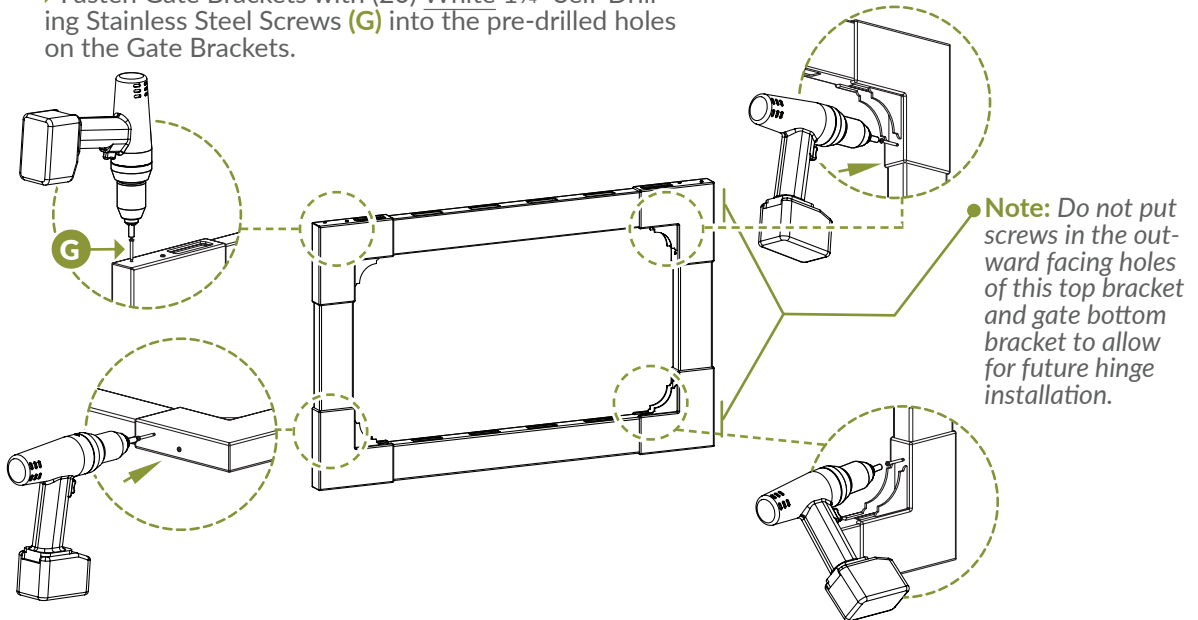
Completed gate frame.



STEP 4: SCREW GATE FRAME TOGETHER

STEP 4.1 ▶

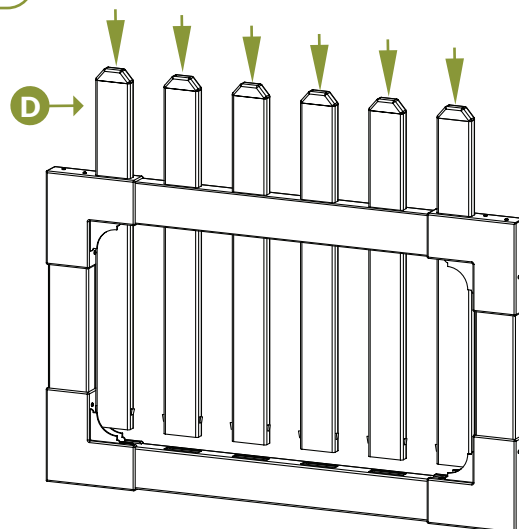
► Fasten Gate Brackets with (20) White 1¼" Self-Drilling Stainless Steel Screws (G) into the pre-drilled holes on the Gate Brackets.



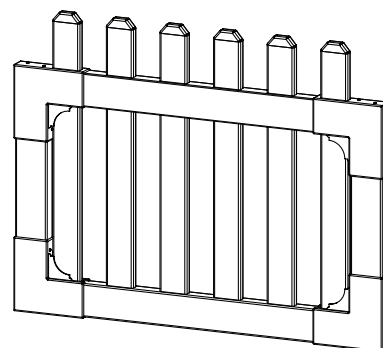
STEP 5: INSERT PICKETS INTO GATE FRAME

STEP 5.1 ▶

► Insert Pickets (D) through the Top Rail into the Bottom Rail.



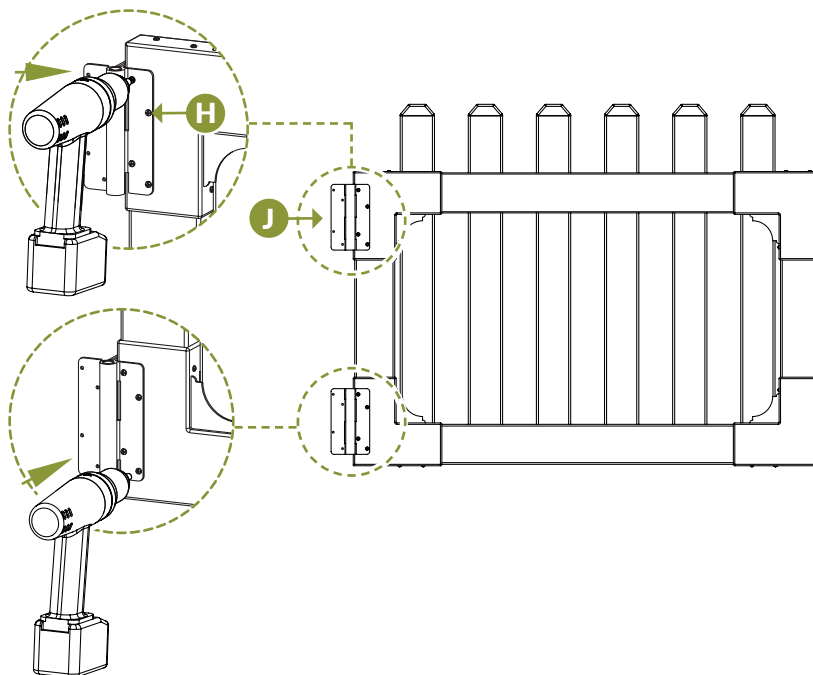
Completed gate with frame.



STEP 6: FASTEN GATE HINGES

STEP 6.1 ▶

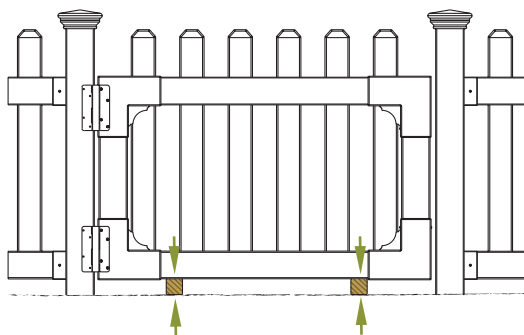
▶ Fasten Gate Hinges (J) onto the front of the gate with (8) Black 1½" Self-Drilling Stainless Steel Screws (H).



STEP 7: SECURE HINGES TO POSTS

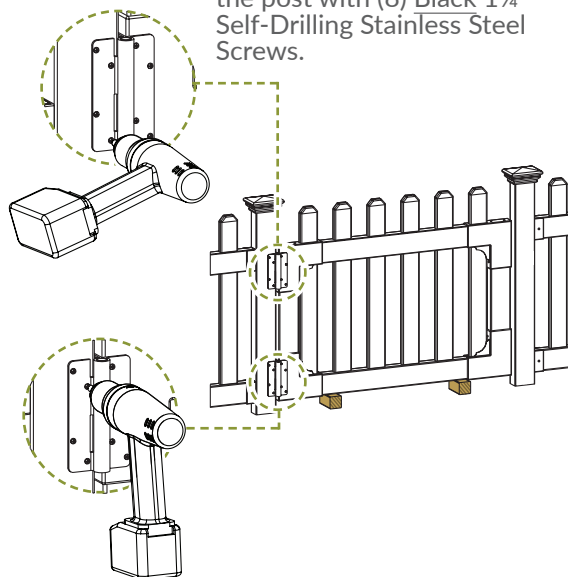
STEP 7.1 ▶

▶ Use temporary spacers or blocks to rest the gate on during alignment and installation.



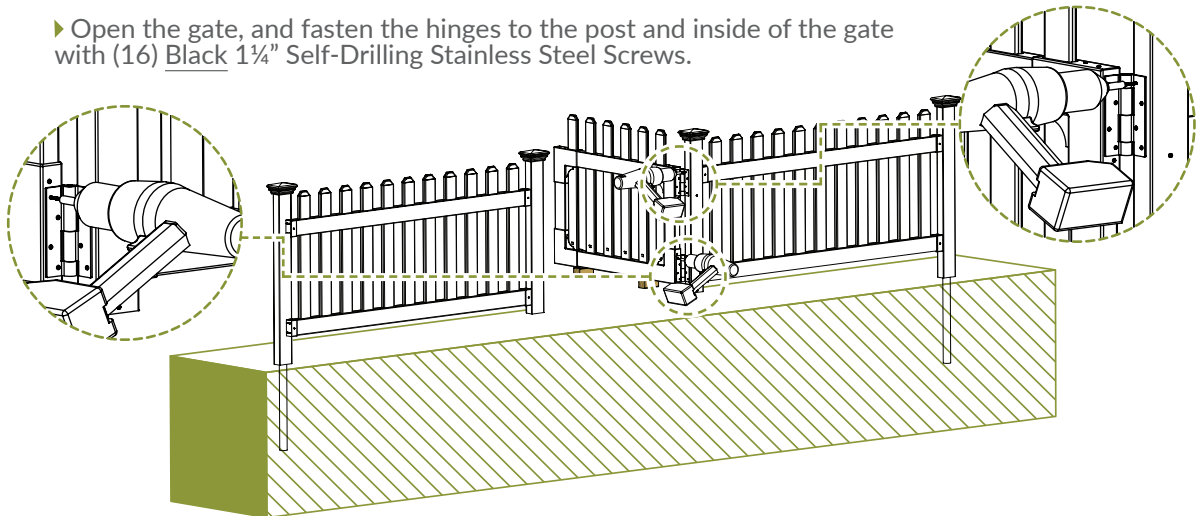
STEP 7.2 ▶

▶ Fasten Gate Hinges to the post with (8) Black 1½" Self-Drilling Stainless Steel Screws.



STEP 7.3 ▶

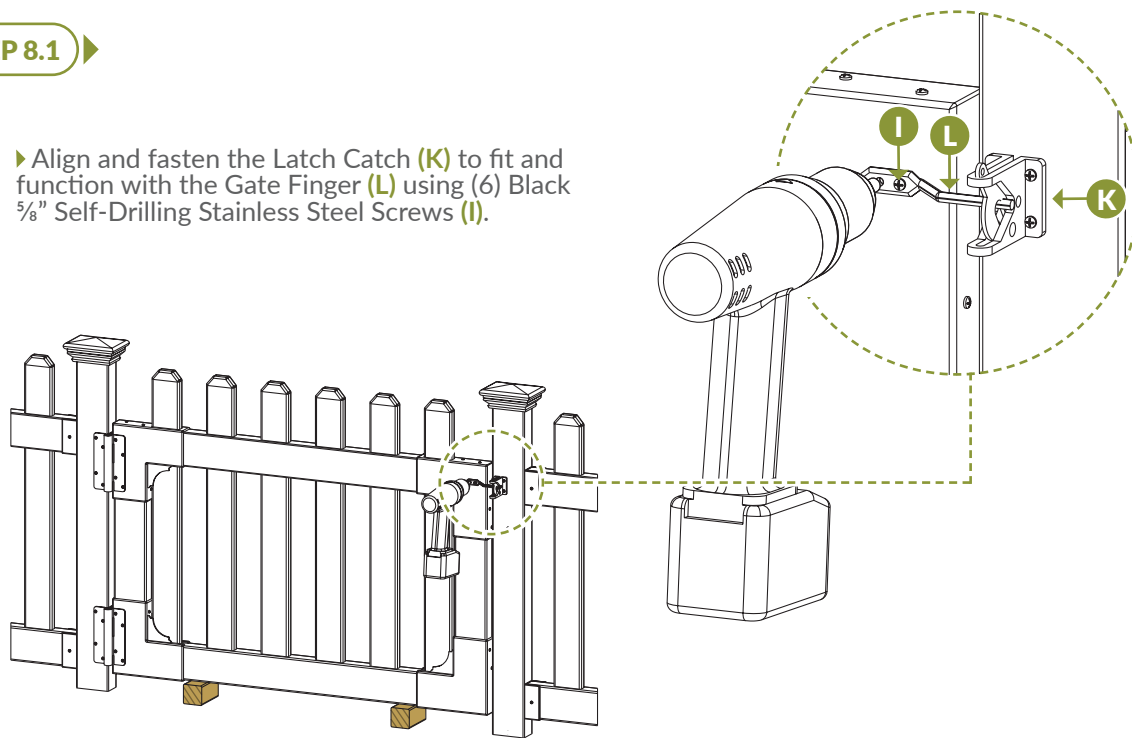
- ▶ Open the gate, and fasten the hinges to the post and inside of the gate with (16) Black 1 1/4" Self-Drilling Stainless Steel Screws.



Note: If your internal pipe anchor ends up close to the inside corner of the post, you will need to angle the 1 1/4" self-drilling stainless steel screws to avoid the pipe anchor.

STEP 8: ALIGN AND INSTALL LATCH**STEP 8.1** ▶

- ▶ Align and fasten the Latch Catch (**K**) to fit and function with the Gate Finger (**L**) using (6) Black 5/8" Self-Drilling Stainless Steel Screws (**I**).





ZIPPITY

Easy Does It!



6935 Reames Rd. Ste. K.
Charlotte, NC 28216



support@zippity-outdoor.com

704-892-5222
877-234-6196



WWW.ZIPPITY-OUTDOOR.COM