



Model Number:

CAS75206W      CAB75206W

CAS75206P      CAB75206P

CAS75206      CAB75206



[www.ciarraappliances.com](http://www.ciarraappliances.com)





**Dear customer:**

Thank you so much for your purchase, please read this instruction manual carefully before installation & use.

If you have any question, please contact us at:

**E-mail:** [info@ciarraappliances.com](mailto:info@ciarraappliances.com)

# CONTENTS

|                                    |              |
|------------------------------------|--------------|
| <b>Safety</b>                      | <b>3-4</b>   |
| <b>Specifications</b>              | <b>5</b>     |
| <b>Before Using the Range Hood</b> | <b>6</b>     |
| <b>Prepare for Installation</b>    | <b>7</b>     |
| <b>Installation</b>                | <b>8-16</b>  |
| Install the Hood                   | 8-15         |
| Carbon Filter Installation         | 16           |
| <b>Operation</b>                   | <b>18-29</b> |
| Push Button                        | 18           |
| Touch Control                      | 19-20        |
| Smart Life APP                     | 21-23        |
| Voice Control                      | 24-29        |
| <b>Cleaning and Maintenance</b>    | <b>30-32</b> |
| Grease Filter                      | 30           |
| Carbon Filter                      | 30           |
| Stainless Steel Cleaning           | 30           |
| Painted Finish Cleaning            | 30           |
| LED Replacement                    | 31-32        |
| <b>Troubleshooting</b>             | <b>33</b>    |
| <b>Environmental Protection</b>    | <b>34</b>    |



## **WARNING**

**TO REDUCE THE RISK OF FIRE, ELECTRIC SHOCK, OR INJURY TO PERSONS, OBSERVE THE FOLLOWING:**



- Use this unit only in the manner intended by the manufacturer. If you have questions, contact the manufacturer at the address or telephone number listed in the warranty.



- Before servicing or cleaning unit, unplug or disconnect the range hood from the power supply.
- This appliance is not intended for use by persons (including children) with reduced physical, sensory or mental capabilities, or lack of experience and knowledge, unless they have been given supervision or instruction concerning use of the appliance by a person responsible for their safety.
- Installation work and electrical wiring must be done by a qualified person(s) in accordance with all applicable codes and standards, including fire-rated construction.
- Sufficient air is needed for proper combustion and exhausting of gases through the flue (chimney) of fuel burning equipment to prevent back drafting.
- When cutting or drilling into a wall or ceiling, do not damage electrical wiring and other hidden utilities.
- Ducted fans must always be vented to the outdoors.
- Ensure the requirements of the local authorities are adhered to concerning the discharge of exhaust air.
- This unit must be grounded.
- When applicable local regulations comprise more restrictive installation and/or certification requirements, the aforementioned requirements prevail on those of this document and the installer agrees to conform to these at his own expense.
- Clean range hood frequently. Grease should not be allowed to accumulate on fans, filters or in exhaust ducts.



**Warning: Failure to install the screws or fixing device in accordance with these instructions may result in electrical hazards.**

# Safety

## WARNING

**TO REDUCE THE RISK OF INJURY TO PERSONS IN THE EVENT OF A RANGE TOP GREASE FIRE, OBSERVE THE FOLLOWING\*:**

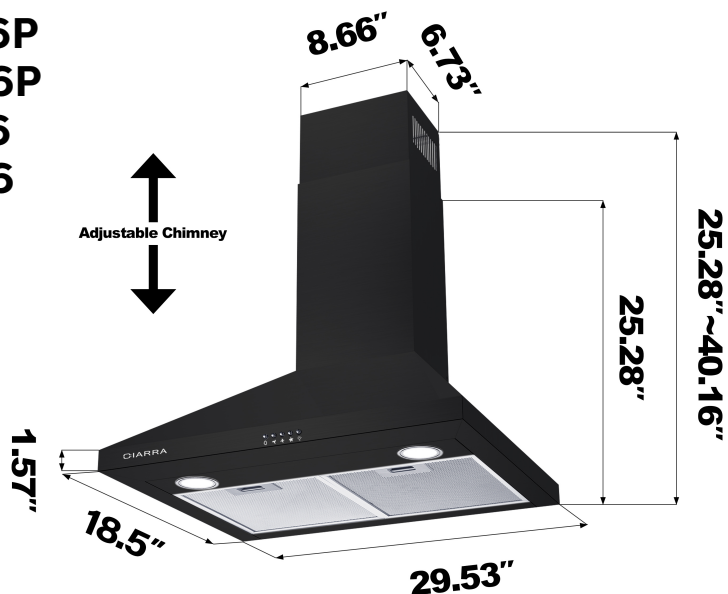
1. SMOTHER FLAMES with a close-fitting lid, cookie sheet or metal tray, then turn off the burner. BE CAREFUL TO PREVENT BURNS. IF THE FLAMES DO NOT GO OUT IMMEDIATELY, EVACUATE AND CALL THE FIRE DEPARTMENT.
2. NEVER PICK UP A FLAMING PAN – You may be burned.
3. DO NOT USE WATER, including wet dishcloths or towels – This could cause a violent steam explosion.
4. Use an extinguisher ONLY if:
  - a) You own a Class ABC extinguisher and you know how to operate it.
  - b) The fire is small and contained in the area where it started.
  - c) The fire department has been called.
  - d) You can fight the fire with your back to an exit.

## CAUTION

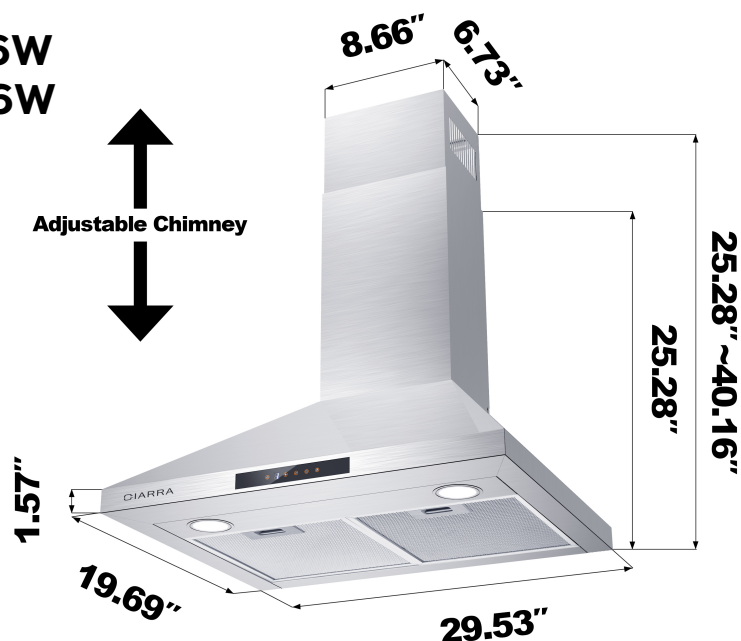
- For indoor use only.
- For general ventilating use only. Do not use to exhaust hazardous or explosive materials and vapors.
- To avoid motor bearing damage and noisy and/or unbalanced fan blade, keep drywall spray, construction dust, etc. off range hood.
- Your hood motor has a thermal overload which will automatically shut off the motor if it becomes overheated. The motor will restart when it cools down. If the motor continues to shut off and restart, have the hood serviced.
- Always follows the cooking equipment manufacturer's requirements regarding the ventilation needs.
- To reduce the risk of fire and to properly exhaust air, be sure to duct air outside – Do not exhaust air into spaces within walls or ceiling or into attics, crawl space or garage.
- When installing, servicing or cleaning the unit, it is recommended to wear safety glasses and gloves.
- Please read specification label on product for further information and requirements.

# Specifications

**CAS75206P**  
**CAB75206P**  
**CAS75206**  
**CAB75206**



**CAS75206W**  
**CAB75206W**



| SKU  | CAS75206P<br>CAB75206P   | CAS75206<br>CAB75206 | CAS75206W<br>CAB75206W |
|--|--|----------------------|------------------------|
| Voltage  | 120V/60Hz  |                      |                        |
| Power of Motor   | 1 x 200W   |                      |                        |
| Power of lamps   | 2 x 3W   | 2 x 1.5W             | 2 x 1.5W               |
| Appliance<br>Dimension   | 29.53*18.5*25.28-40.16(inches)<br>29.53*19.69*25.28-40.16(inches)<br>(W x D x H) |                      |                        |
| <b>Note:</b> The manufacturer reserves the right to change any technological improvement or modification without prior notice. |  |                      |                        |

# **Before Using the Range Hood**



**CAUTION:** Before proceeding to the installation, check if items are missing or damaged, contact the manufacturer.

Observe all governing codes and ordinances. Have a qualified technician install the range hood. It is the installer's responsibility to comply with installation clearances specified on the model/serial rating plate. The manufacturer declines all responsibility for improper installation and does not accept responsibility for appliance warranty in the event of damage caused by incorrect installation.

## **COMPONENTS:**



Part 1: **Wall Plug** X 9



Part 2: **0.16"\*1.18" Screws** X 9



Part 3: **0.16"\*0.32" Screws** X 6



Part 4: **Aluminum Exhaust Pipe** X 1



Part 5: **Cable Ties** X 2



Part 6: **Installation Manual** X 1



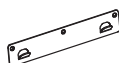
Part 7: **1:1 Installation Diagram** X 1



Part 8: **Lower Chimney Bracket** X 1



Part 9: **Upper Chimney Bracket** X 1



Part 10: **Wall Bracket** X 1



Part 11: **Range Hood Body** X 1



Part 12: **Lower Chimney** X 1



Part 13: **Upper Chimney** X 1

## **YOU WILL BE NEEDING THESE TOOLS FOR INSTALLATION**



**1.Protective Gloves**



**4.Double Sided Tape or Tape**



**2.Spirit Level Ruler**



**5.Cross-Head Screwdriver Set**



**3.Measuring Tape**



**6.Electric drill and 8mm drill**

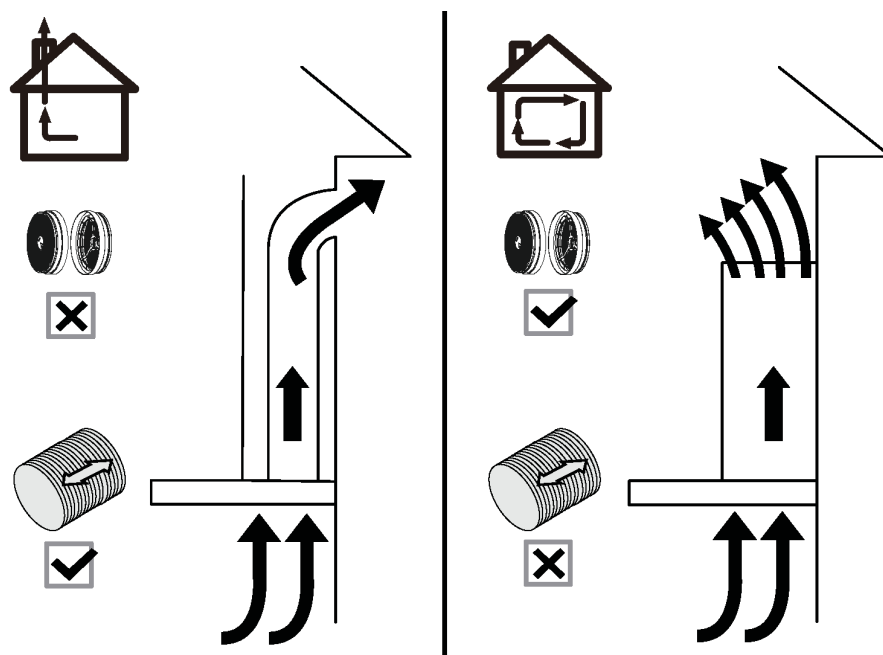
# Prepare for Installation

## Prepare for Installation:

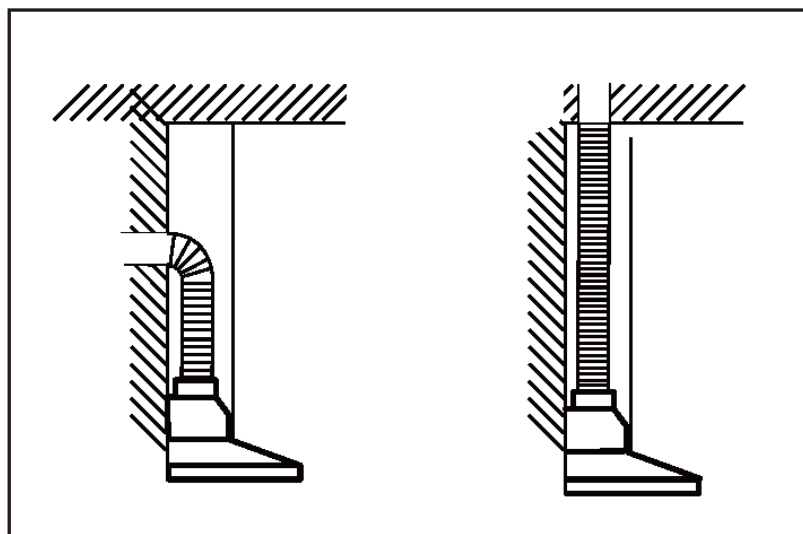
### a) Ventilation Mode

Recirculation Mode: Recirculating with carbon filter (required), the smells and odors can be filtered and vented through the top vented hole and the exhaust pipe is not required.

Extraction Mode: You can install the 59" long and 6" diameter aluminum exhaust pipe for extracting, which is included in the installation kit.



- b) When possible, use at least 2 foot straight runs before any turns. Larger duct work may be required for best performance with longer duct runs.



- c) Before installation, don't connect the power.

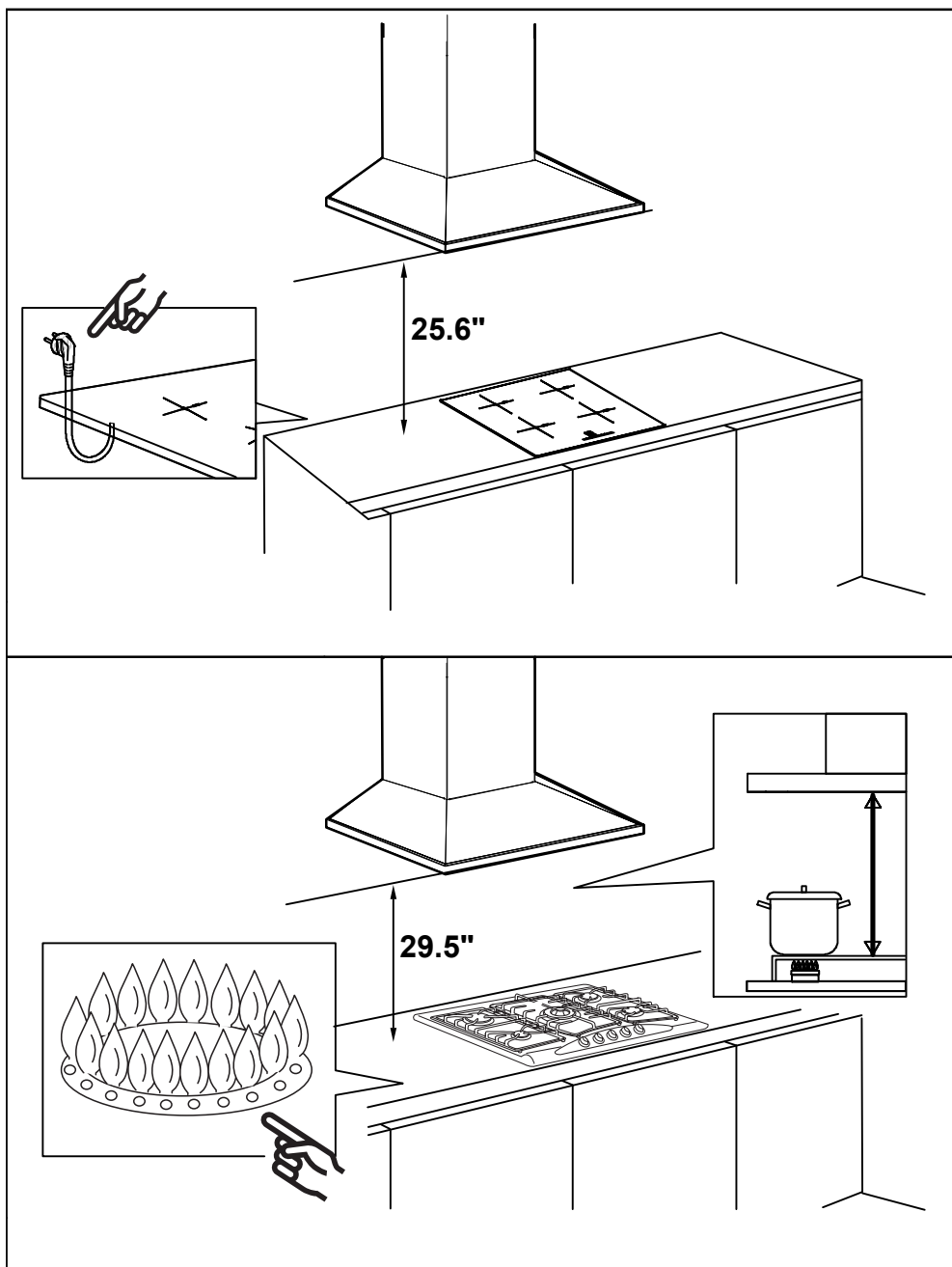
# Installation

---



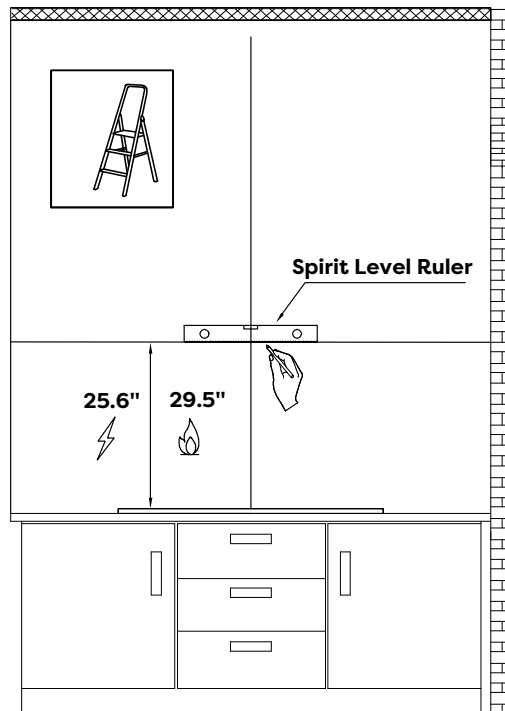
## Install the Hood (Extraction) :

- 1) Remove all protective poly film from the hood and/or parts.
- 2) Recommend installation height: 25.6"~29.5" above the cooktop for best extraction.
  - ◆ Required height over gas hob: 29.5";
  - ◆ Required height over electric hob: 25.6".

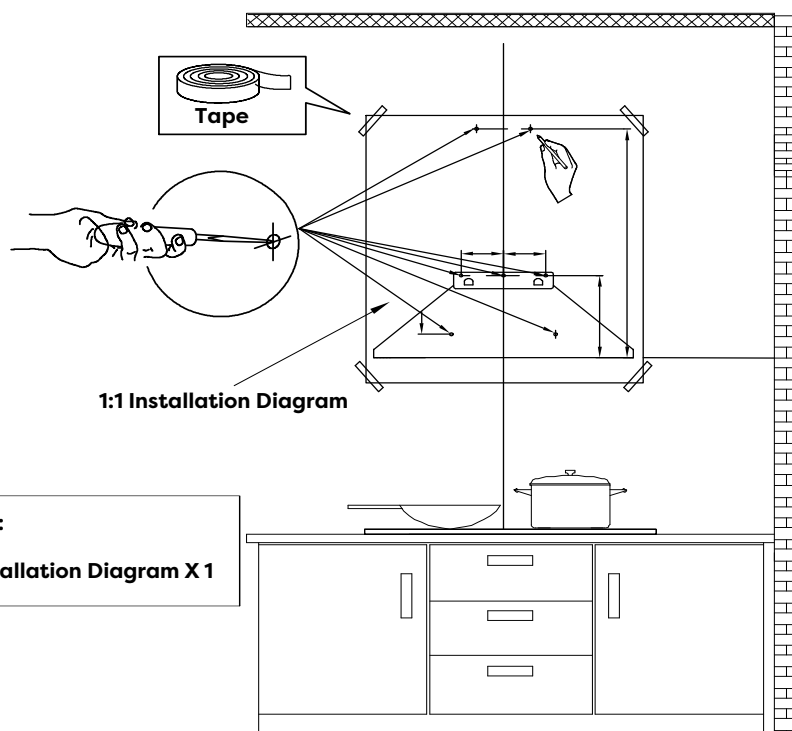


# Installation

- 3) First use a pencil to mark the installation position on the wall, then use a Measuring Tape to measure the height from the stove surface to the hood (the center point of aluminum grease filter) and use a Spirit Level Ruler to maintain the level, then use a pencil to draw a horizontal line along the level.



- 4) Poke the 7 perforated positions on the 1:1 Installation Diagram, then align with the center point of aluminum grease filter on the Installation Diagram with the horizontal line on the wall, then tape the Installation Diagram to the wall, and use a pencil to mark the perforated positions on the wall in the corresponding positions.

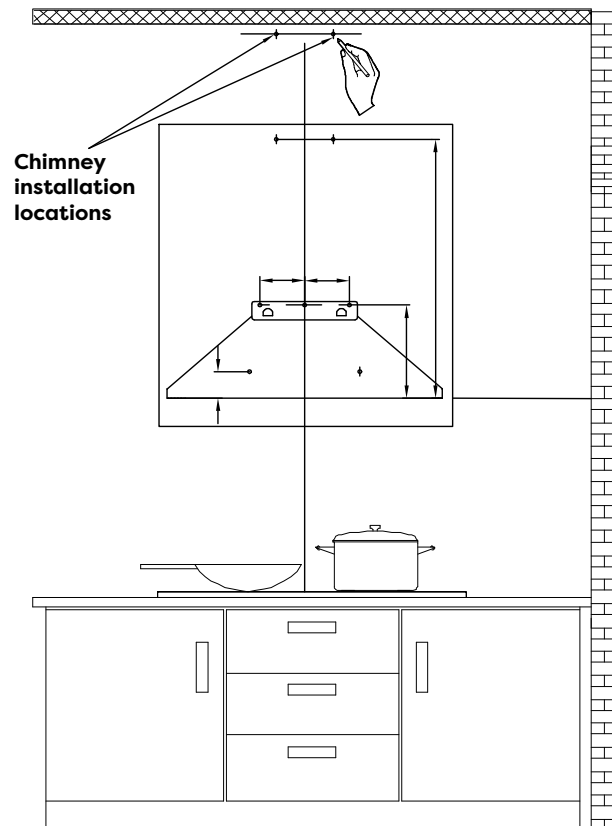


## COMPONENTS:

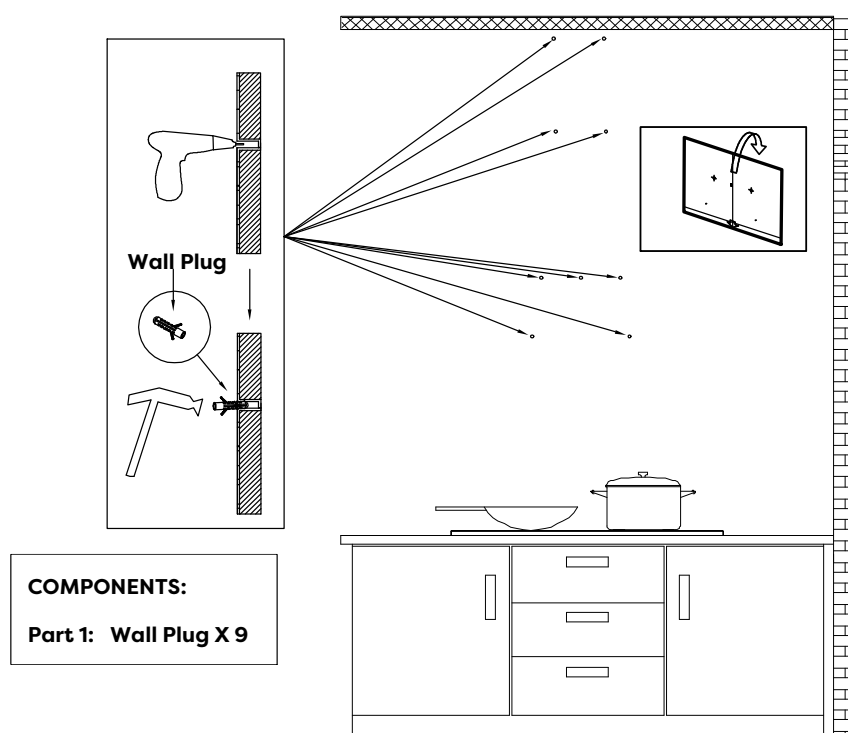
Part 7: 1:1 Installation Diagram X 1

# Installation

- 5) Determine the maximum chimney installation height according to the actual scenario and mark the chimney installation locations along the center line of the Installation Diagram.



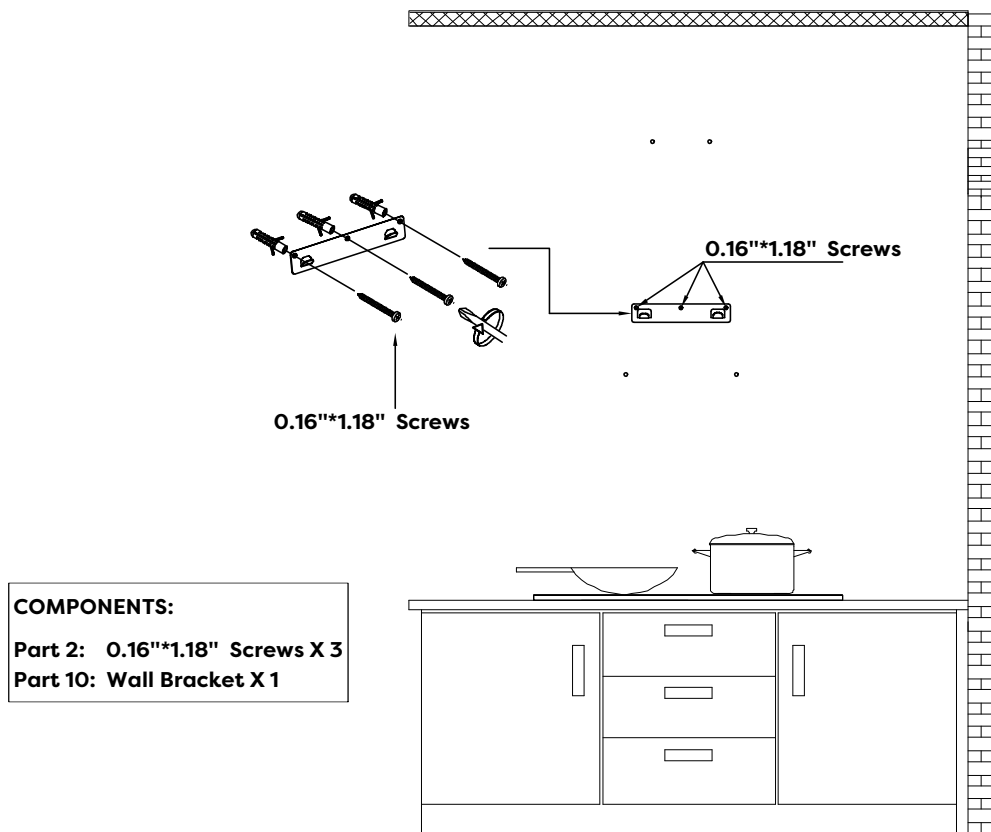
- 6) Remove the Installation Diagram, drill the holes that have been marked on the wall with an Electric Drill (8mm drill), and hammer the Wall Plug into the wall.



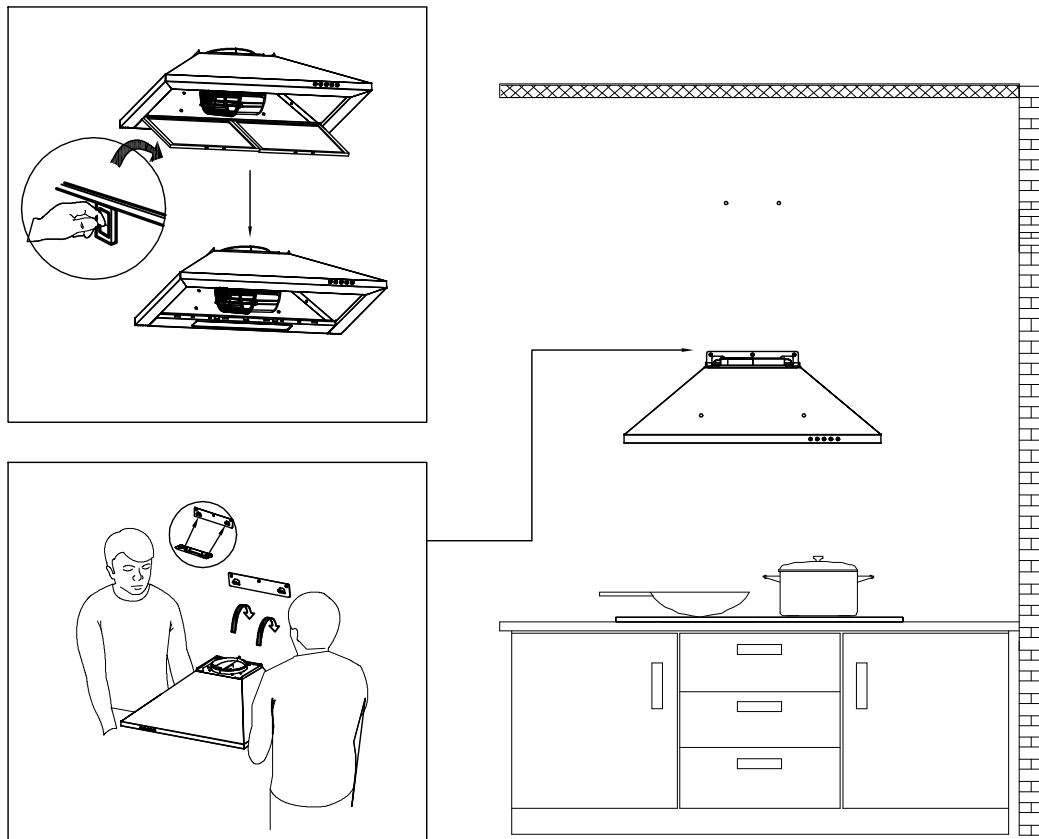


# Installation

- 7) Use three 0.16"\*1.18" Screws to fasten the Wall Bracket on the wall.

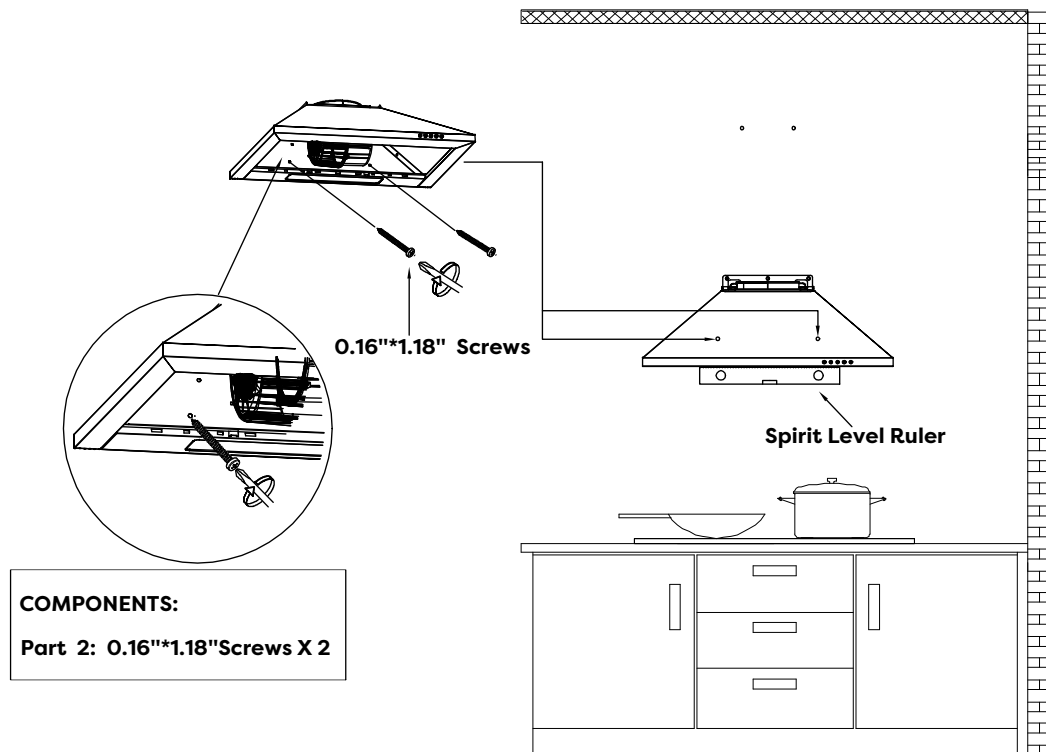


- 8) Remove the aluminum grease filter and hang the hood on the corresponding hook of the Wall Bracket.

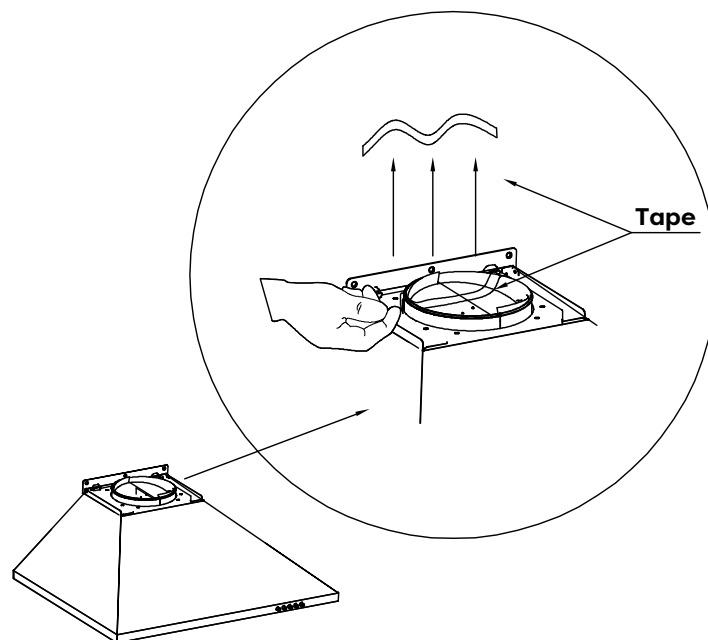


# Installation

- 9) Use a Spirit Level Ruler to measure whether the hood is in a horizontal level, and use two 0.16"\*1.18" Screws to lock into the safety hole position of the hood (not mandatory, according to user's wishes to choose whether to lock).



- 10) Tear off the tape from the air outlet.

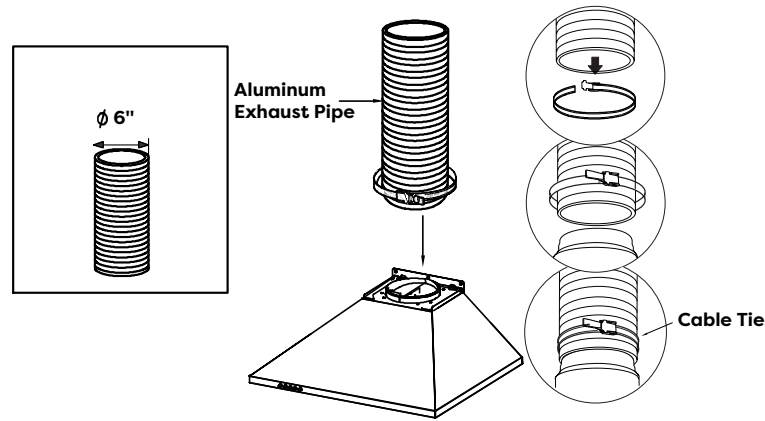


## NOTE:

- Make sure you remove the tape on the damper and check if the damper opens and closes freely, otherwise it make noises, and the range hood will be shaking.

# Installation

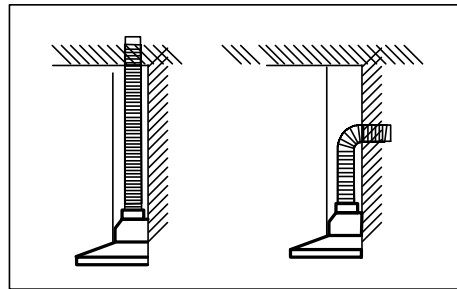
- 11) Install the Aluminum Exhaust Pipe into the air outlet and lock it with a Cable Tie; the other end of the Aluminum Exhaust Pipe will be pulled upward to outdoor and lock it with a Cable Tie (Note: This step can be ignored if use as recirculation mode with carbon filter).



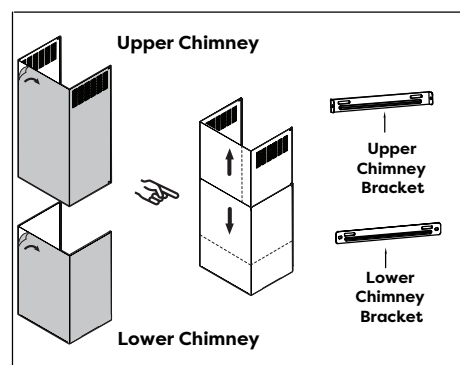
## COMPONENTS:

Part 4: Aluminum Exhaust Pipe X 1

Part 5: Cable Tie X 1



- 12) Use two 0.16"\*0.32" Screws to fasten the Lower Chimney Bracket on the Lower Chimney.

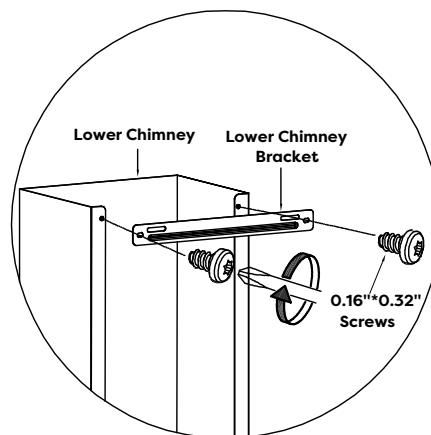


## COMPONENTS:

Part 8: Lower Chimney Bracket X 1

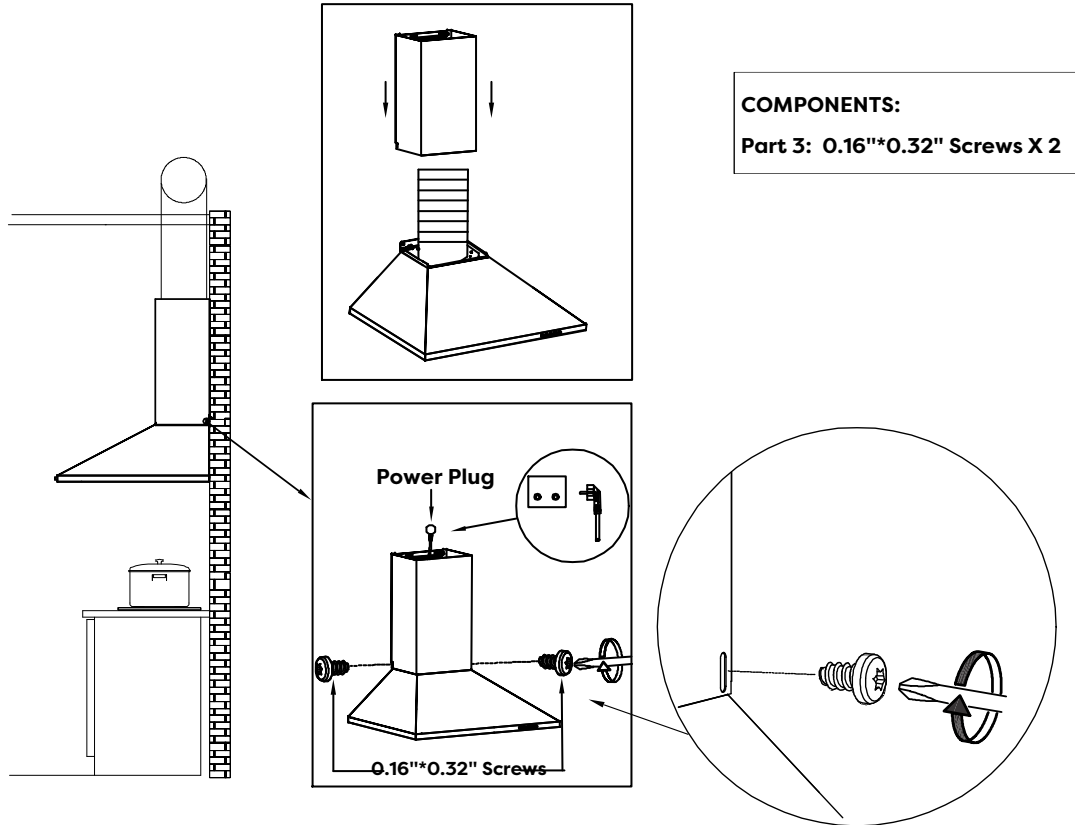
Part 12: Lower Chimney X 1

Part 3: 0.16"\*0.32" Screws X 2

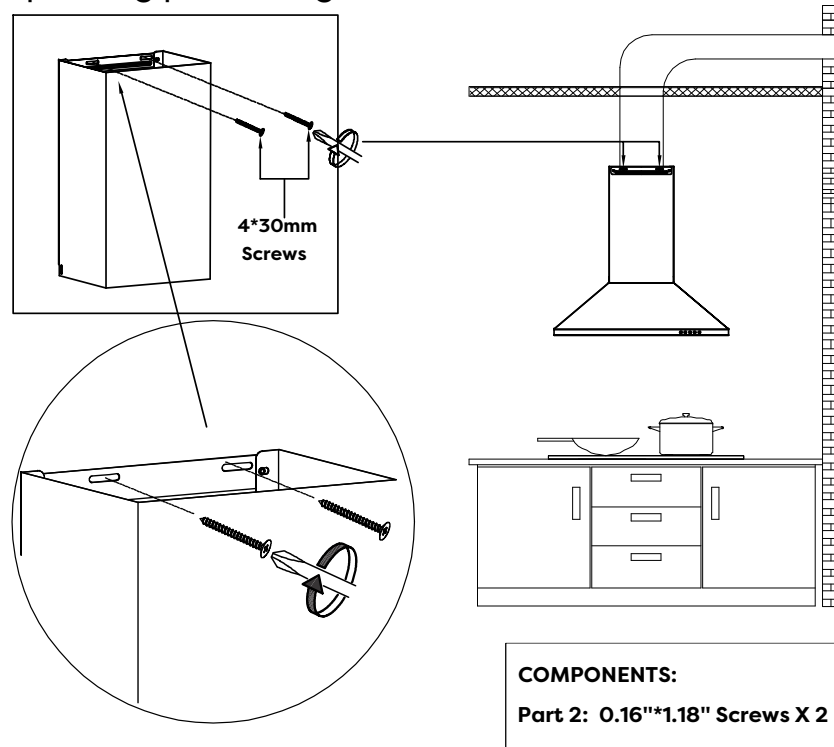


# Installation

- 13) Insert the Lower Chimney into the hood and fix it to the corresponding positioning hole with two 0.16"\*0.32" Screws. (Note: That the power cord needs to go through the chimney and connect the power).

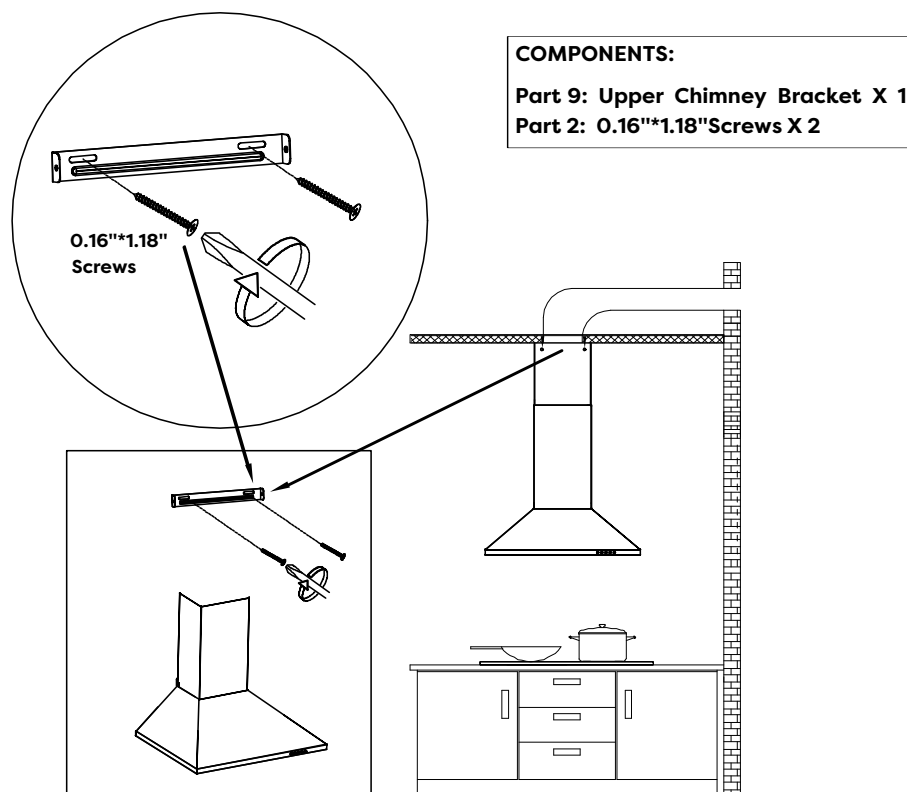


- 14) Use two 0.16"\*1.18" Screws to lock the Lower Chimney Bracket into the corresponding positioning holes on the wall.

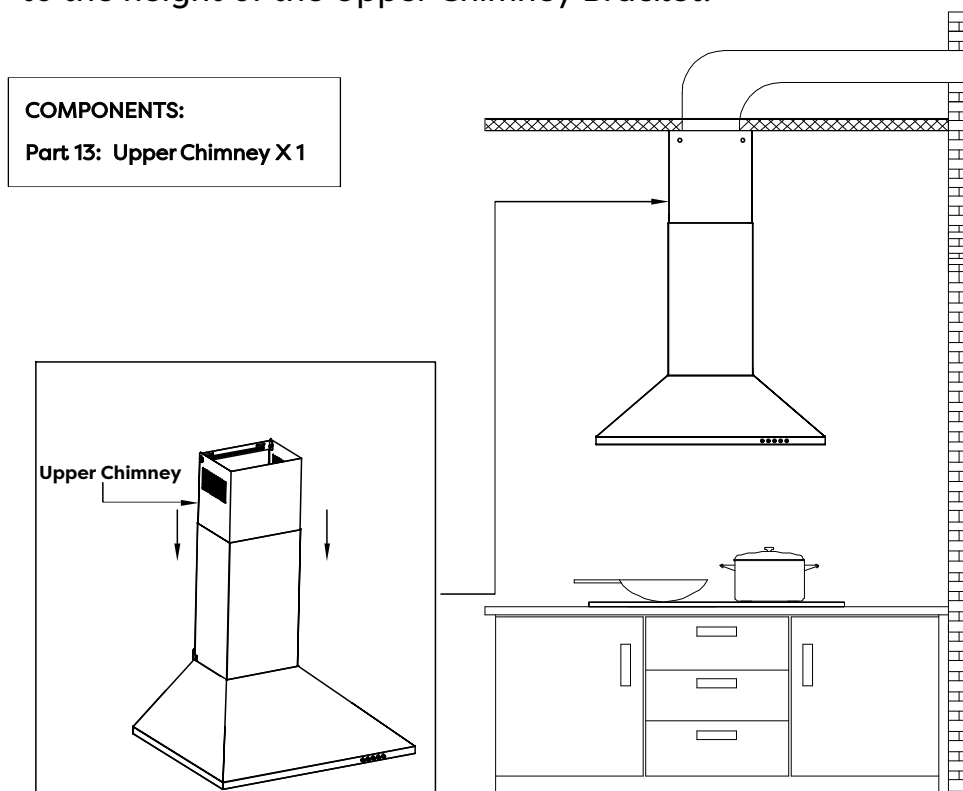


# Installation

- 15) Use two 0.16"\*1.18" Screws to lock the Upper Chimney Bracket to the corresponding positioning holes on the wall.



- 16) Put the Upper Chimney into the Lower Chimney, and then pulled to the height of the Upper Chimney Bracket.

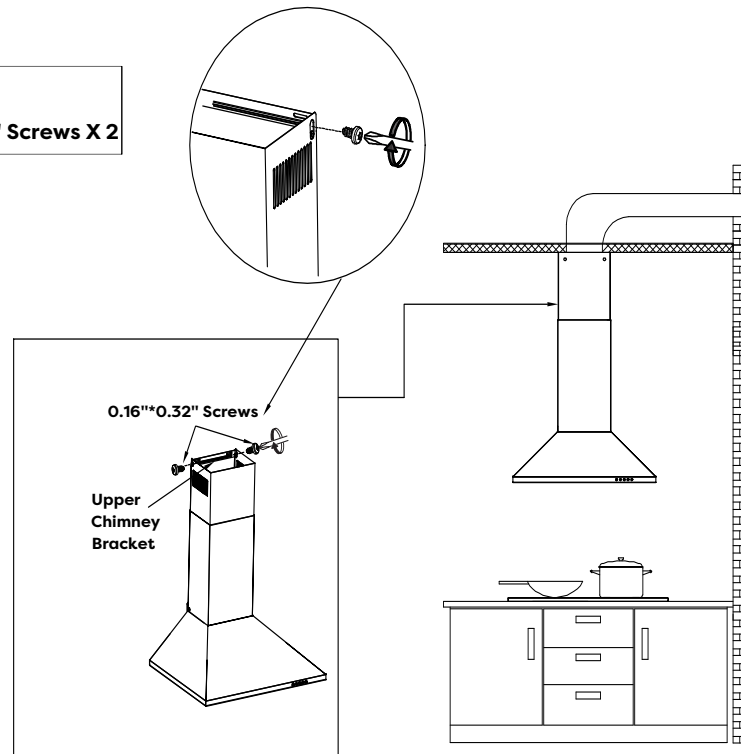


# Installation

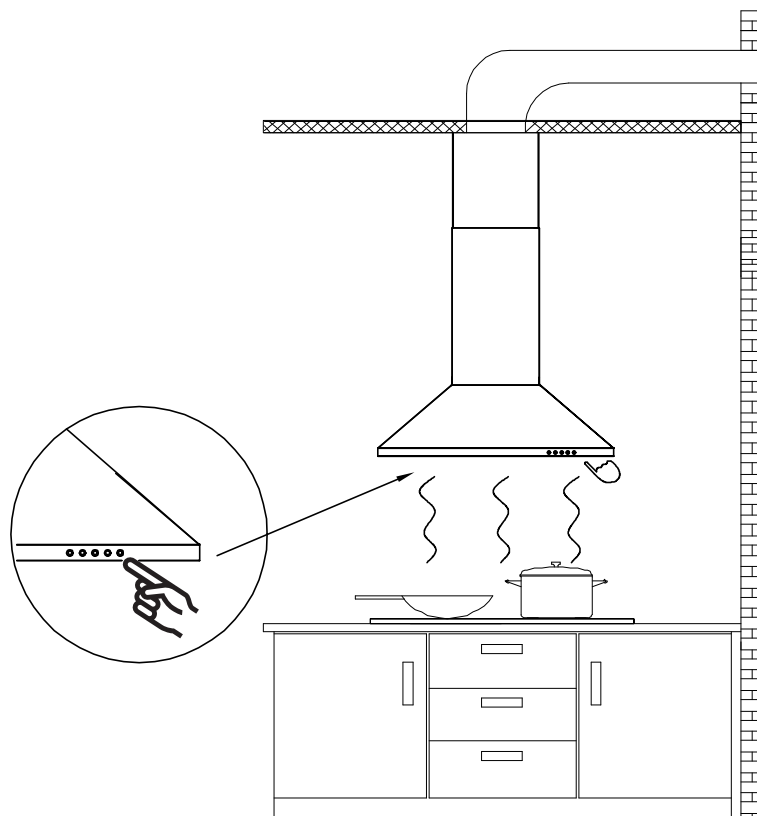
- 17) Use two 0.16"\*0.32" Screws to assemble the Upper Chimney on the Upper Chimney Bracket.

**COMPONENTS:**

Part 3: 0.16"\*0.32" Screws X 2



- 18) Turn the LED lights on/off, and test whether the functions are working properly.



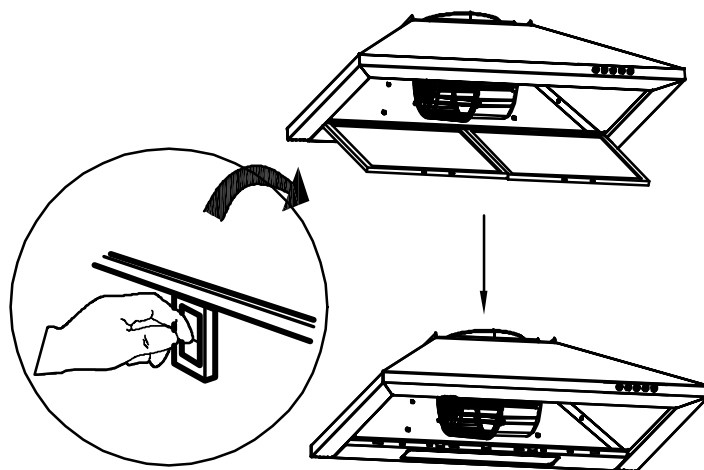
# Installation



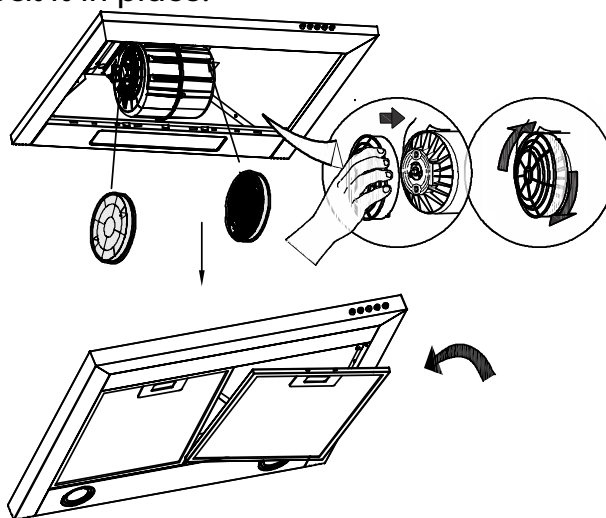
## Carbon Filter Installation (Recirculation) :

1. Carbon filter can be used to trap odors.

In order to install the carbon filter, the grease filter should be detached first. Press the lock and pull it down.



2. Place the carbon filter into the unit and turn it in the clockwise direction to lock it in place.



3. If the carbon filter needs to be replaced, please turn it in the anti-clockwise direction.

### NOTE:

- Make sure the carbon filter is securely locked.
- When the carbon filter is installed, the suction of the range hood will be reduced.
- The carbon filter should be changed every 2-4 months depending on the conditions of use.

# Operation

---

Always turn your hood on before you begin cooking to establish an air flow in the kitchen.

Operate the hood as follows:

| SKU     | CAS75206P<br>CAB75206P | CAS75206<br>CAB75206 | CAS75206W<br>CAB75206W                                     |
|---------|------------------------|----------------------|--|
| Control | Push Button            | Touch control        | Touch+Wifi+App+Voice control<br>with ALEXA and Google Home |

## CAS75206P CAB75206P Push button



### Off button

It's used to turn off the fan.

### Low Speed button

For air ventilation with barely no noise; or simmering with very little smoke and steam.

### Medium Speed button

For your everyday cooking purpose.

### High Speed button

High-Speed for stir-fry or cooking with lots of smoke and grease produced.

### Light button

When lights are OFF, press this button once to turn ON the lights. Press this button again to turn OFF the lights.



# Operation

CAS75206W CAS75206  
CAB75206W CAB75206

## Touch control



### Power key:

It's used to turn on/off the power. Press 2S to power on, press 1S to power off.



### Added level key:

Indicator show level adjustment 1-2-3-0-1, Show 0 for turning off, Loosen hand turn off orange color out-ring delay 5 seconds.



### Reduced level key:

Indicator show level adjustment 3-2-1-0-3, Show 0 for turning off, Loosen hand and delay 5 seconds turn off orange color out-ring.



### Turn on/off Switch key:

When the range hood is turned on:

Press once, turn on the LED light in level 1, orange out ring light will be on; Press for the second time, turn on the LED light in level 2, increase brightness; Press for the third time, turn off the LED light and the orange out ring light.



### Setting clean & fresh function:

After turning on, push “+” and “-” button 3 seconds, go into clean & fresh function, “+” and “-” button orange color out-ring light will be on, range hood go into one level clean&fresh function and not influence on function operation, same method could used for turn off clean & fresh function, turn off “+” and “-” button orange out-ring light will be off.

# Operation

---



## **Delay function:**

When range hood working, could set delay function.

Push first time and indicator show 1, for delaying 5 minutes;

Push second time and indicator show 2, for delaying 10 minutes;

Push third time and indicator show 3, for delaying 15 minutes;

Push fourth time and indicator show 4, for delaying 20 minutes;

Push fifth time and indicator show 0, after 5 seconds in level 0 and drop out delay function automatically.

When setting delay function for level 1-4, indicator blink, after 5 seconds confirm working automatically, After confirming work jump to motor level showing automatically, when delay function work, always show orange color out-ring. When need to check delay level, shortly push one time delay key, show current working level. When delay time is up, turn off all function automatically.



Motor work about 90 hours and remind cleaning filter, show that remind decimal point blink slowly in indicator lower right. Long push timer key 5 seconds and cancel reminder, turn off decimal point, now working, record time again.

Motor work about 270 hours, decimal point light for long time in indicator lower right, remind changing filter, long push delay key 5 seconds and cancel reminder, turn off decimal point, record time again.



## **Wifi pairing mode (Only support CAS75206W and CAB75206W)**

Long press the Delay function+WIFI button for 5 seconds, you will hear the beeping sound, and all orange out ring lights will be flashing, enter Wi-Fi pairing mode, use the "smart life app" on your cell phone to pair the range hood with your Wi-Fi, you will heard a beep sound after successfully pairing the device; all orange out ring lights will be on for 5 seconds, then your range hood will be in stand by mode. If you do not complete the pairing process within 5 minutes, all orange out ring lights will stop flashing, after beep sound it will exit the Wi-Fi pairing mode.

After successfully pairing your device, press the light button again for 5 seconds to disconnect the wifi connection and clear the wifi configuration, (Note: after you disconnect the Wi-Fi connection, you will not be able to control your range hood with the "Smart Life App")

# Operation

## Smart Life APP

(Only support CAS75206W and CAB75206W)

### Download and Intallation of Smart Life APP

1. You must use Android phone or iPhone to download and use this APP.
2. Search “Smart Life” in the Google Play store for Android or IOS App Store to download and install the APP.



### Video Guide



### Range Hood and Smart Life APP pairing

1. When you log in to Smart Life APP for the first time, you need to create a new account. When creating a new account, follow the app prompts to register.
2. If you already have an account, you can use existing account to log in.
3. After logging in, follow the steps below to connect the range hood (the operating procedures of Android and IOS systems are the same).

### About operation interface:



ON/Off Button



Light

#### Light Button

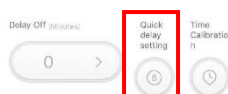
Press once, turn on the LED light in level 1, orange out ring light will be on; Press for the second time, turn on the LED light in level 2, increase brightness; Press for the third time, turn off the LED light and the orange out ring light.

Fan Speed



#### Fan Speed Button

You can control the corresponding gears of 1-2-3-P on the range hood.

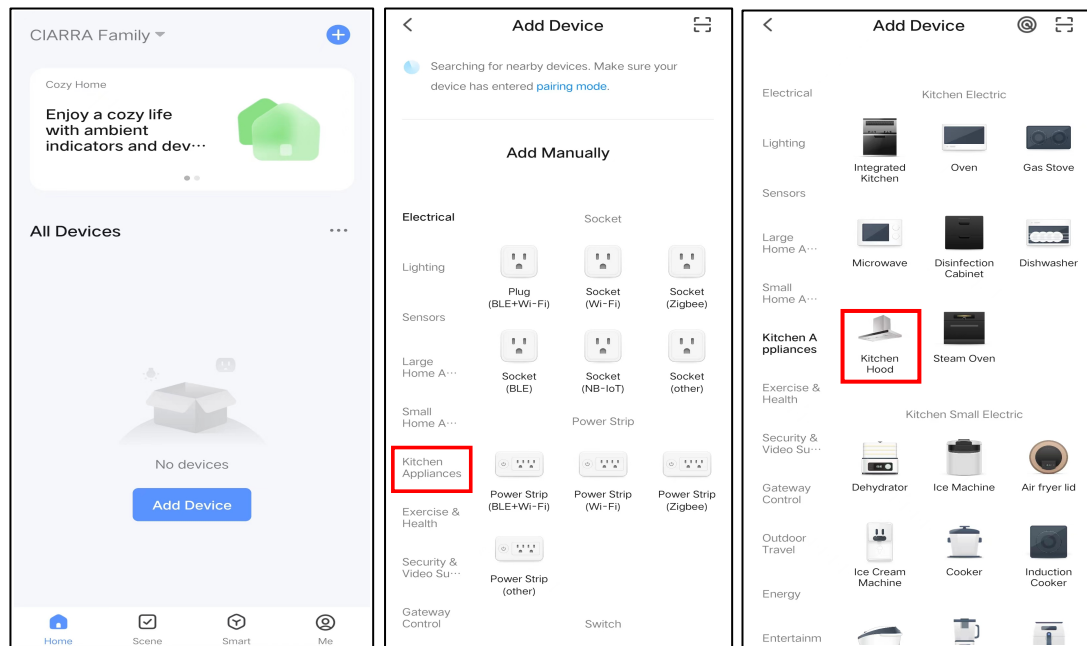


#### Quick Delay Setting

When range hood is working, you can set the delay timer through delay function.

Push this button, the range hood will stop working in 5 minutes.

# Operation



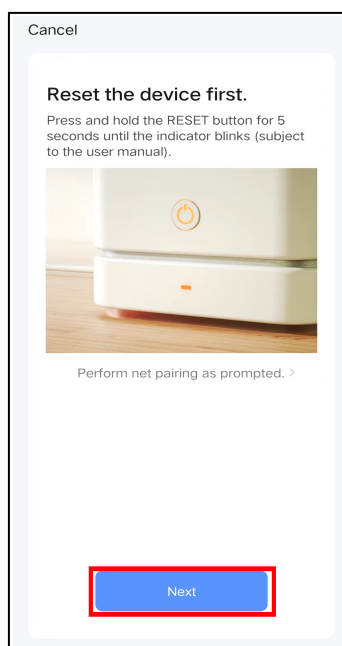
1. Open the smart life app, Click Add Device.

2. Choose kitchen appliances from the menu bar on the left.

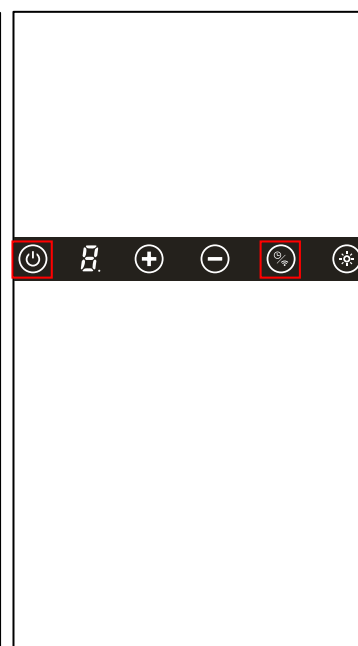
3. Choose kitchen hood.



4. Connect your home Wi-Fi and enter the password, then click Confirm.

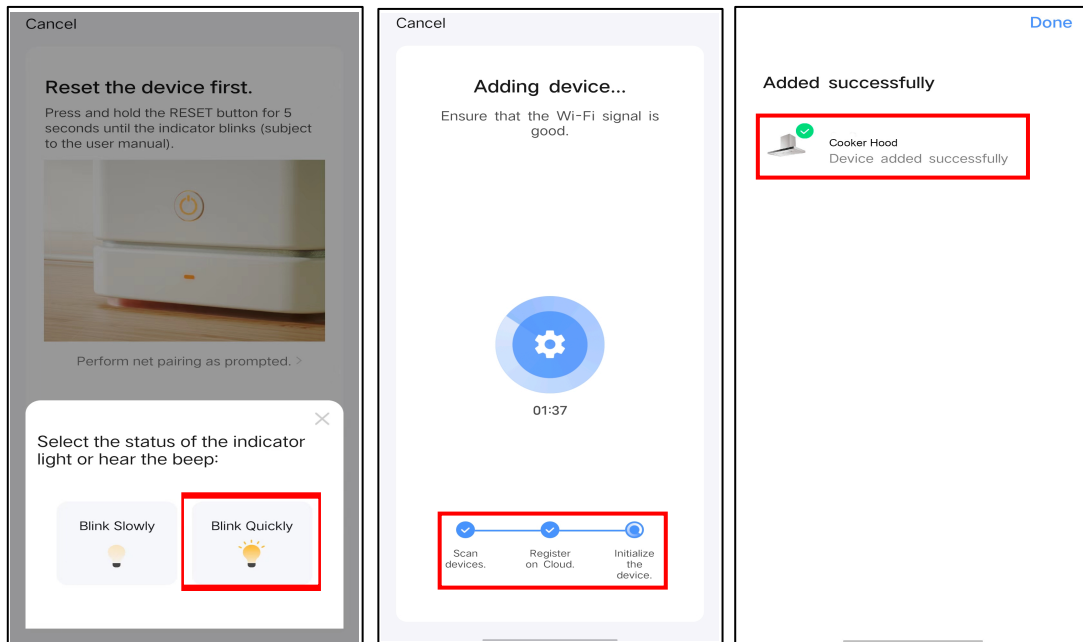


5. Click "Next" to go to the next step.



6. Press 2S to power on, and press the "Delay function+WIFI" button for 5 seconds, you will hear the beeping sound, and all orange out ring lights will be flashing, enter Wi-Fi pairing mode.

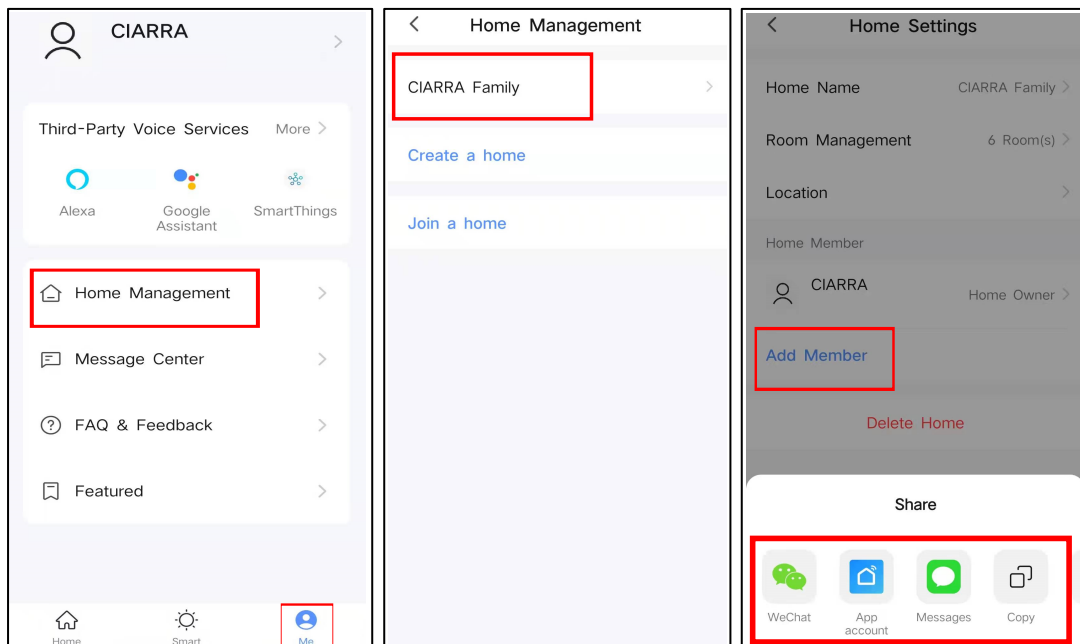
# Operation



7. Click “Blink Quickly” and click “Next”.

8. Adding device...

9. When you see this interface it means you have successfully connected your device.



10. Click "Me" and select "Home Management".

11. You can create a home or join a home in this area. Click "my family management".

12. Select "Add members" and share to members, after members are successfully join the same family, they can remotely control "Range Hood".

# Operation

## Voice control with ALEXA

(Only support CAS75206W and CAB75206W)

### 1. Precondition:

- You must have internet access, your devices should be connecting to the same Wi-Fi network.
- An Echo device, including Echo, Echo Tap, or Echo Dot.
- Amazon account, if you do not have one; please register one first.
- Have "Smart Life App" and account.

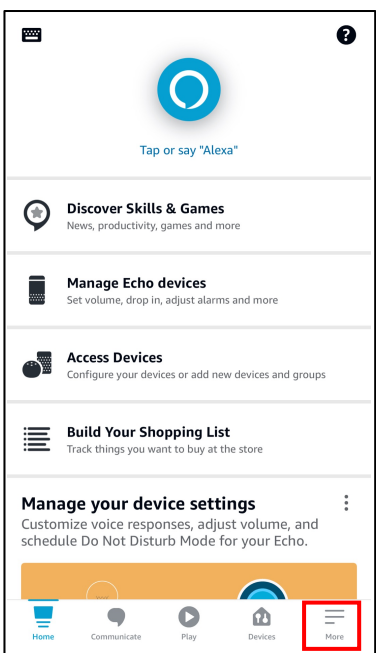
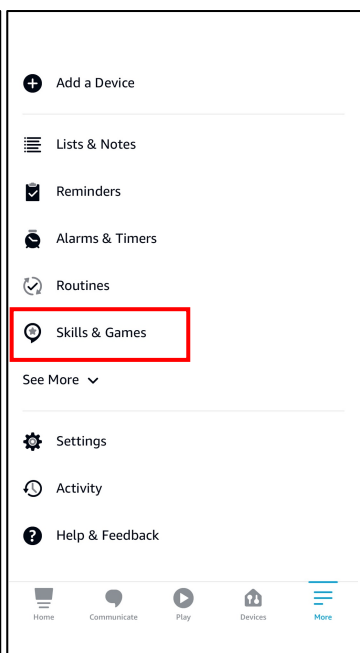
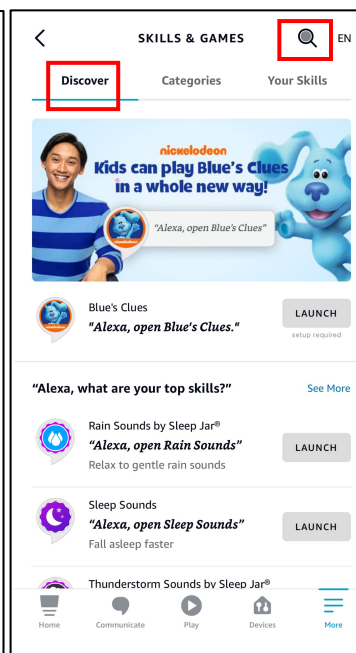
**P.S (use Smart Life App to change your device's name so "Echo" can recognize it) Make sure your account is paired with the range hood; the range hood's name should be recognizable by "Echo" device. For example (Alex's range hood, Range hood, etc).**

### 2. Download Smart Life APP and add smart range hood devices.

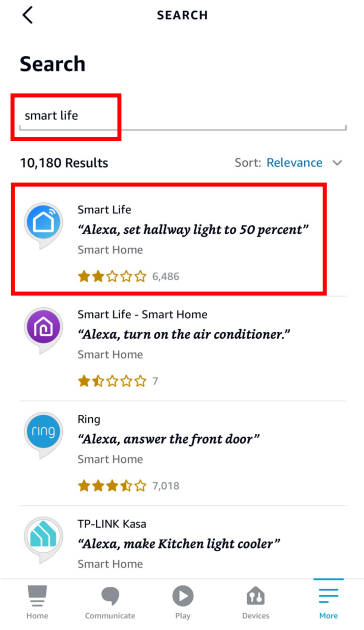
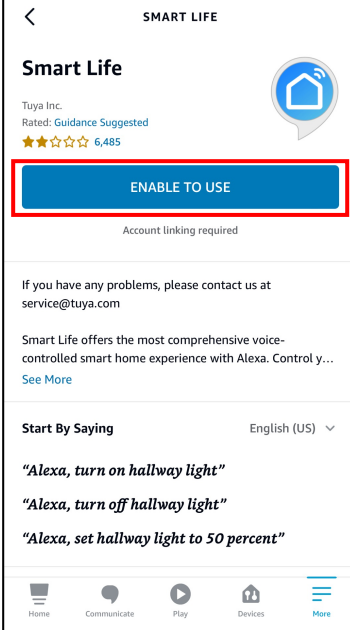
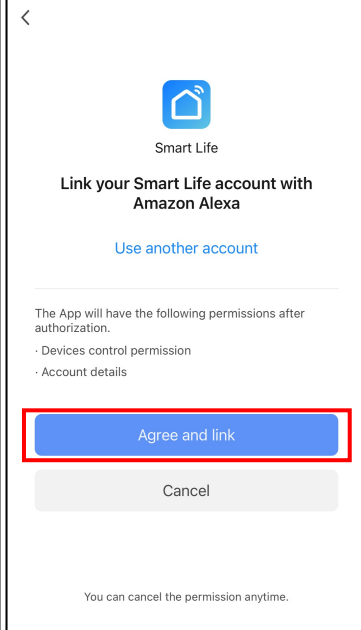
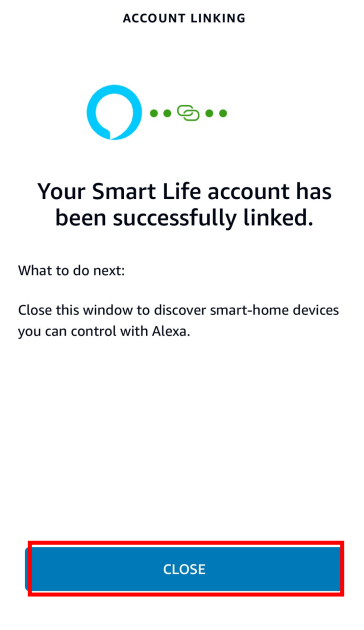
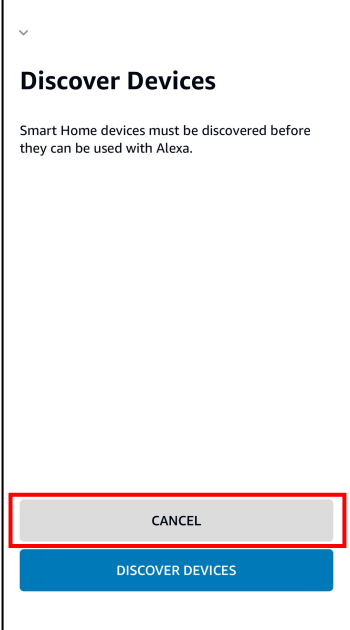
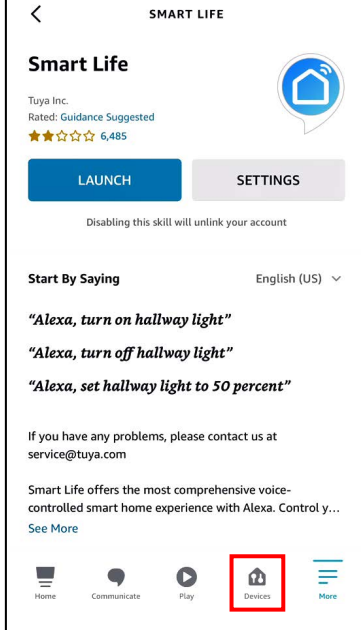
### 3. Configure with Amazon Echo.

Follow Amazon Echo's instruction to set up your Echo device.

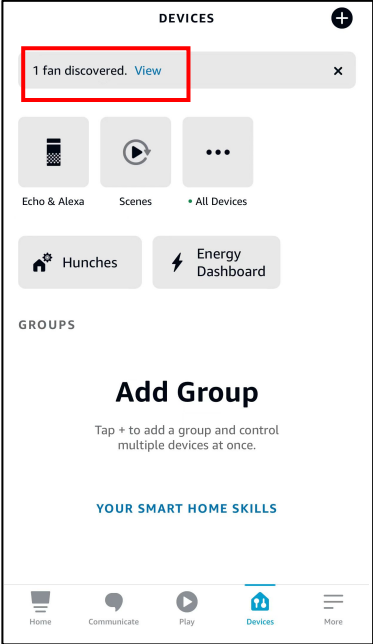
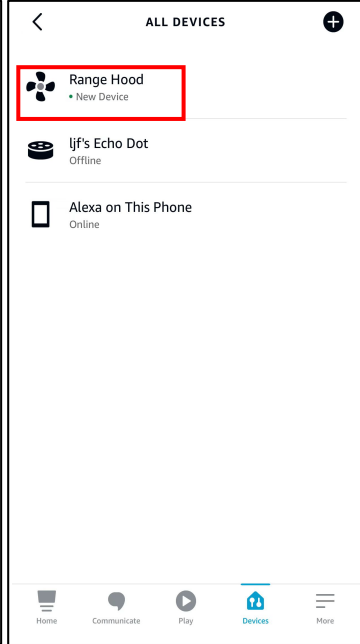
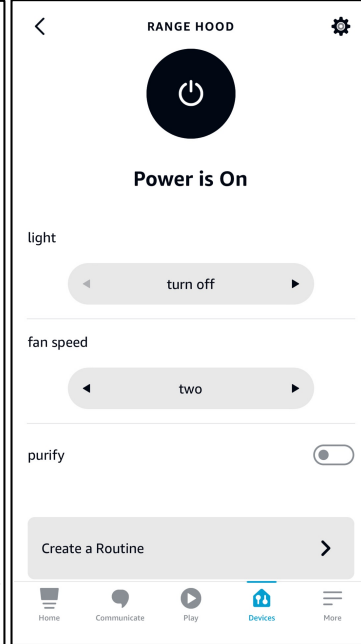
### 4. Link your Smart Life account to Alexa.

|   |   |   |
|---|---|---|
|  |  |                   |
| <p>1. Open the "Amazon Alexa" app and click "More" in the lower right corner.</p>   | <p>2. Click "Skills&amp;Games" to go to the next step.</p>                          | <p>3. Select "Discover" and click search icon in the upper right corner to enter the search page.</p> |

# Operation

|  |  |   |
|--|--|---|
|  <p>The screenshot shows the Amazon Search results for 'Smart Life'. The search bar at the top contains 'smart life'. Below the search bar, there are 10,180 results. The first result is 'Smart Life' by Tuya Inc., with a rating of 4.5 stars and 6,485 reviews. The description says 'Alexa, set hallway light to 50 percent'. The second result is 'Smart Life - Smart Home' by Tuya Inc., with a rating of 4.5 stars and 7 reviews. The description says 'Alexa, turn on the air conditioner.' The third result is 'Ring' by Ring, with a rating of 4.5 stars and 7,018 reviews. The description says 'Alexa, answer the front door.' The fourth result is 'TP-LINK Kasa' by TP-LINK, with a rating of 4.5 stars and 7,018 reviews. The description says 'Alexa, make Kitchen light cooler'.</p> |  <p>The screenshot shows the 'Smart Life' app interface. At the top, there is a 'Smart Life' header with the Tuya Inc. logo and a rating of 4.5 stars and 6,485 reviews. Below the header, there is a blue button labeled 'ENABLE TO USE'. Underneath this button, it says 'Account linking required'. Further down, there is a section titled 'If you have any problems, please contact us at service@tuya.com'. Below this, there is a section titled 'Smart Life offers the most comprehensive voice-controlled smart home experience with Alexa. Control y...'. At the bottom, there is a section titled 'Start By Saying' with a dropdown menu set to 'English (US)'. Below this, there are three voice commands: 'Alexa, turn on hallway light', 'Alexa, turn off hallway light', and 'Alexa, set hallway light to 50 percent'.</p> |  <p>The screenshot shows the 'Smart Life' app interface with the account linking screen. At the top, there is a 'Smart Life' header with the Tuya Inc. logo and a rating of 4.5 stars and 6,485 reviews. Below the header, there is a blue button labeled 'ENABLE TO USE'. Underneath this button, it says 'Account linking required'. Further down, there is a section titled 'If you have any problems, please contact us at service@tuya.com'. Below this, there is a section titled 'Smart Life offers the most comprehensive voice-controlled smart home experience with Alexa. Control y...'. At the bottom, there is a section titled 'Start By Saying' with a dropdown menu set to 'English (US)'. Below this, there are three voice commands: 'Alexa, turn on hallway light', 'Alexa, turn off hallway light', and 'Alexa, set hallway light to 50 percent'.</p>   |
| <p>4. Enter "Smart Life" in the search box, find "Smart Life" (the icon as shown in diagram) in the search list, and click to go to the next step.</p>   | <p>5. Click "ENABLE TO USE" to go to the next step.</p>  | <p>6. Click on "Agree and link" to go to the next step.</p>   |
|  <p>The screenshot shows the 'ACCOUNT LINKING' screen. At the top, there is a header 'ACCOUNT LINKING'. Below the header, there is a blue circular icon with three dots. Below the icon, there is a message: 'Your Smart Life account has been successfully linked.' Below this message, there is a section titled 'What to do next:' with the text 'Close this window to discover smart-home devices you can control with Alexa.' At the bottom, there is a blue button labeled 'CLOSE'.</p>   |  <p>The screenshot shows the 'Discover Devices' screen. At the top, there is a header 'Discover Devices'. Below the header, there is a message: 'Smart Home devices must be discovered before they can be used with Alexa.' At the bottom, there is a blue button labeled 'DISCOVER DEVICES' and a grey button labeled 'CANCEL'.</p>  |  <p>The screenshot shows the 'Smart Life' app interface with the 'Discover Devices' screen. At the top, there is a 'Smart Life' header with the Tuya Inc. logo and a rating of 4.5 stars and 6,485 reviews. Below the header, there is a blue button labeled 'LAUNCH' and a grey button labeled 'SETTINGS'. Underneath these buttons, it says 'Disabling this skill will unlink your account'. Further down, there is a section titled 'Start By Saying' with a dropdown menu set to 'English (US)'. Below this, there are three voice commands: 'Alexa, turn on hallway light', 'Alexa, turn off hallway light', and 'Alexa, set hallway light to 50 percent'. At the bottom, there is a section titled 'If you have any problems, please contact us at service@tuya.com'. Below this, there is a section titled 'Smart Life offers the most comprehensive voice-controlled smart home experience with Alexa. Control y...'. At the bottom, there is a section titled 'Start By Saying' with a dropdown menu set to 'English (US)'. Below this, there are three voice commands: 'Alexa, turn on hallway light', 'Alexa, turn off hallway light', and 'Alexa, set hallway light to 50 percent'.</p> |
| <p>7. When "Your Smart Life account has been successfully linked" is displayed, click "CLOSE" to go to the next step.</p>  | <p>8. Click on "CANCEL" to go to the next step.</p>  | <p>9. Click to enter the "Devices" interface.</p>   |

# Operation

|  |   |  |
|--|---|--|
|   |  |    |
| <p>10. When "1 Fan appears" is displayed, click "View" to go to the next step.</p> | <p>11. Click on "Range Hood" to go to the next step.</p>                          | <p>12. Now that the Range Hood has been added successfully, you can remotely control various functions of the Range Hood on this interface, or use Alexa Echo to voice control the Range Hood.</p> |

## 5. Notice:

"DISCOVER DEVICES" can only discover those devices which have been paired with the "Smart Life App"

When you change the name of the device in the "Smart Life App", Echo has to rediscover the device, otherwise you can not control it.

## 6. Voice control devices

Now, you can use Echo to control your device. You can control your range hood through the following:

- Alexa, turn on/off <device name>.
- Alexa, what is the fan speed on <device name>?
- Alexa, set <deviceName> fan speed to (one,two,three,off)
- Alexa, what is the light on DEVICENAME?
- Alexa, set DEVICENAME light to (Turn off, Level 1, Level 2)
- Alexa, what is the purify on DEVICENAME?
- Alexa, turn on purify on DEVICENAME.
- Alexa, turn off purify on DEVICENAME.



## Voice control with Google Home (Only support CAS75206W and CAB75206W)

### 1. Precondition:

Before controlling the device with Google Home, please make sure you meet the following terms:

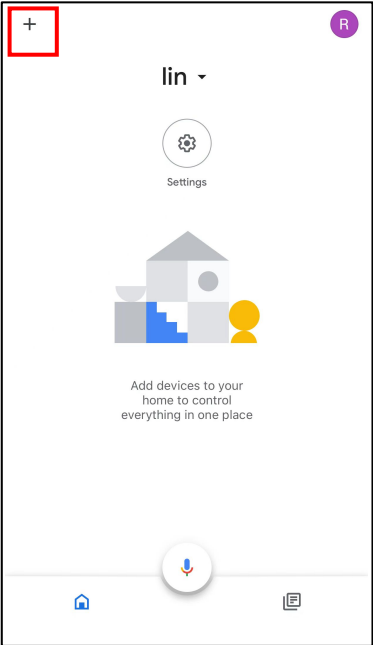
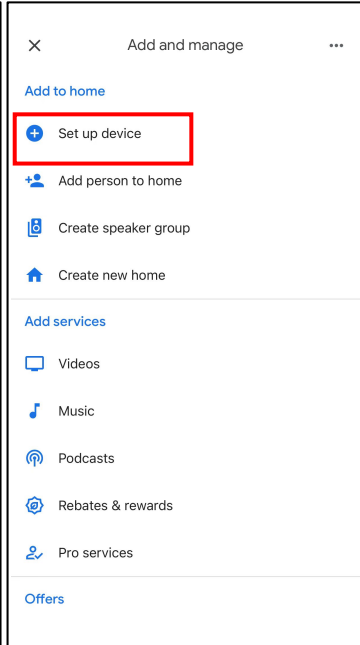
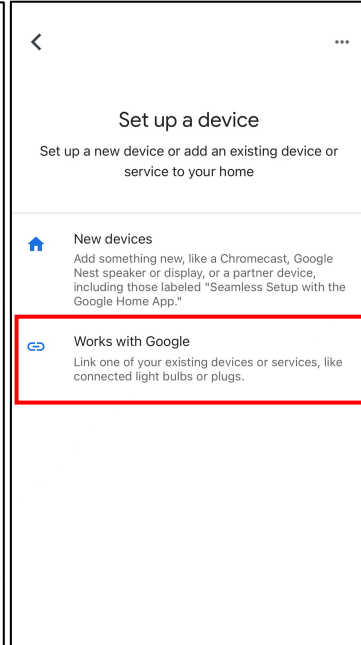
- You must have internet access, your devices should be connecting to the same Wi-Fi network.
- One Google Home device or an Android phone with Google Assistant.
- Newest version of Google Home App.
- Newest version of Google App (only for Android).
- You must have a google account.
- You must set 'English US' as the language of the phone.
- Smart Device.

### 2. Download Smart Life APP and add smart range hood devices.

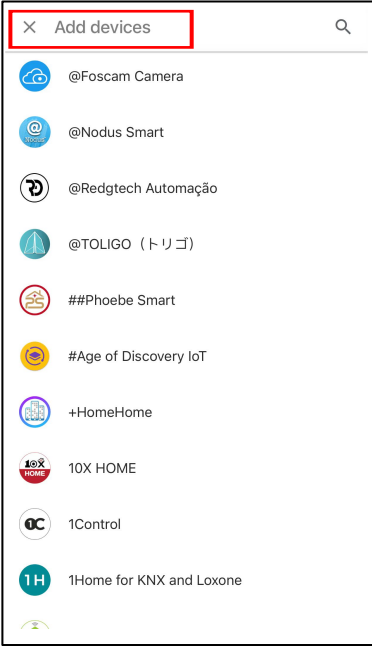
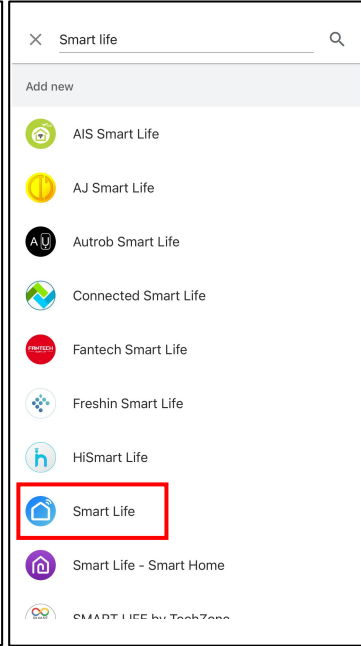
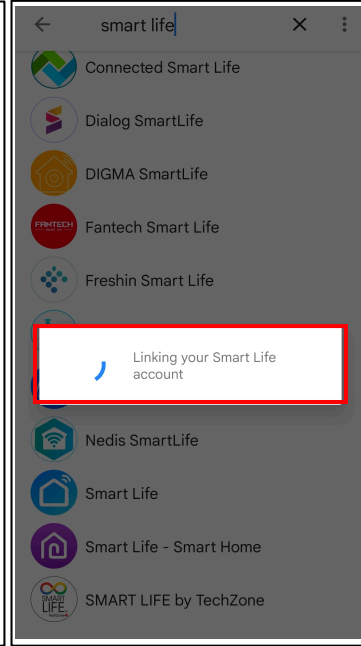
### 3. Configure Google Home.

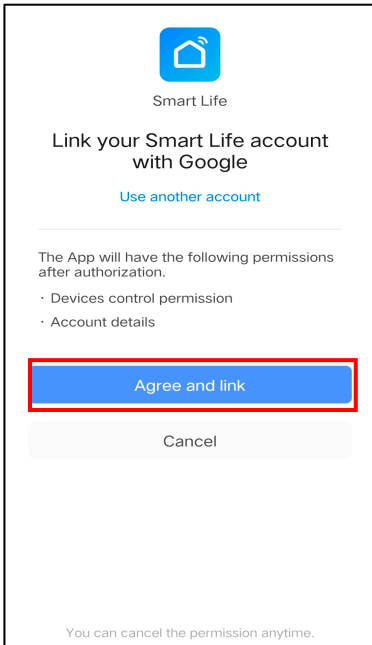
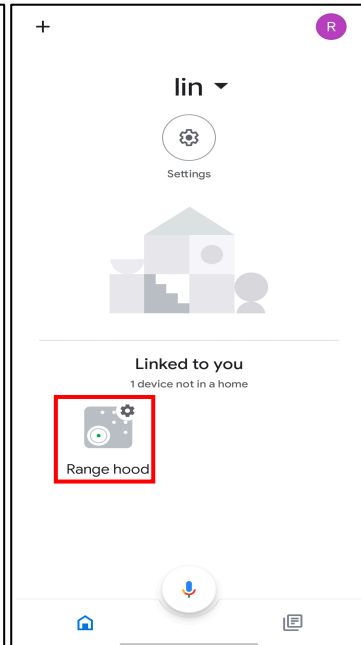
Follow Google Home's instruction to set up your Google Home device.

### 4. Link your Smart Life account to Google Home.

|  |   |  |
|--|---|--|
|                             |  |  |
| <p>1. Open the "Google Home" app and click the "+" button in the upper left corner to go to the next step.</p> | <p>2. Click on "Set up device" to go to the next step.</p>                          | <p>3. Click on "Works with Google" to go to the next step.</p>                       |

# Operation

|   |   |   |
|---|---|---|
|  |                            |                   |
| <p>4. Enter "Smart Life" in the search box, perform your search.</p>              | <p>5. Find "Smart Life" (the icon as shown in diagram) in the search list,click to go to the next step.</p> | <p>6. When "Linking your Smart Life account" is displayed,the page will loads to the next step.</p> |

|   |   |  |
|---|---|--|
|  |    |  |
| <p>7. Click on "Agree and link".</p>  | <p>8. The Home page of Google Home shows the name of the added device "Range Hood". Now that the device has been added successfully, you can use Google Voice Assistant to control your Range Hood.</p> |  |

## 5. Notice:

"DISCOVER DEVICES" can only discover those devices which have been paired with the "Smart Life App"

When you change the name of the device in the "Smart Life App", Google home has to rediscover the device, otherwise you can not control it.

## 6. Voice control devices

Now, you can use Google Home to control your device. You can control your range hood through the following:

- Hey Google, turn on/off <device name>.
- Hey Google, what is the fan speed on <device name>?
- Hey Google, set <deviceName> fan speed to (one,two,three,off)
- Hey Google, what is the light on DEVICENAME?
- Hey Google, set DEVICENAME light to (Turn off, Level 1, Level 2)
- Hey Google, what is the purify on DEVICENAME?
- Hey Google, turn on purify on DEVICENAME.
- Hey Google, turn off purify on DEVICENAME.

# **Cleaning and Maintenance**

---

Proper maintenance of the Range Hood will assure proper performance of the unit. Before cleaning unit, unplug or disconnect the range hood from the power supply.

## **GREASE FILTERS**

The grease filters should be cleaned frequently. Can be cleaned in dishwasher under high temperature without using any detergent.

## **CARBON FILTER**

The carbon filter should be changed every 2-4 months depending on the conditions of use. Replace more often if your cooking style generates lots of greases, such as stir frying. These filters are not washable and cannot be reused. Refer to installation instructions included with a carbon filter.

## **STAINLESS STEEL CLEANING**

### **Do:**

- Regularly clean it with a cloth or rag soaked with warm water and mild soap or liquid dish detergent.
- You may also use a specialized household stainless steel cleaner.

### **Don't:**

- Use any steel or stainless-steel wool or any other scrapers to remove stubborn dirt.
- Use any harsh or abrasive cleansers.
- Let plaster dust or any other construction residues reach the hood. During construction/ renovation, cover the range hood to make sure no dust sticks to the stainless-steel surface.

### **Avoid when choosing a detergent:**

- Any cleaners that contain **bleach** will attack stainless steel.
- Any products containing: **chloride, fluoride, iodide, bromide** will deteriorate surfaces rapidly.
- Any combustible products used for cleaning such as **acetone, alcohol, ether, benzol**, etc., are highly explosive and should never be used close to a range.

## **PAINTED FINISH CLEANING:**

Clean with warm water and mild detergent only. If discoloration occurs, use a finish polish such as automotive polish. (DO NOT use a rough abrasive cleaner or porcelain cleaner.)

# Cleaning and Maintenance

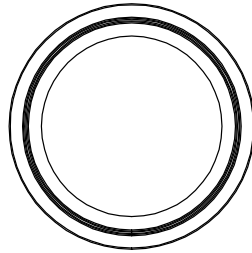
## LED REPLACEMENT

### ■ Rectangle LED lamp:

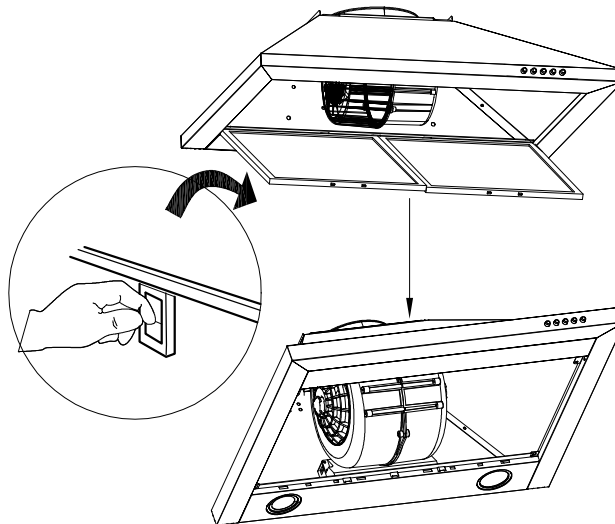


#### CAUTION:

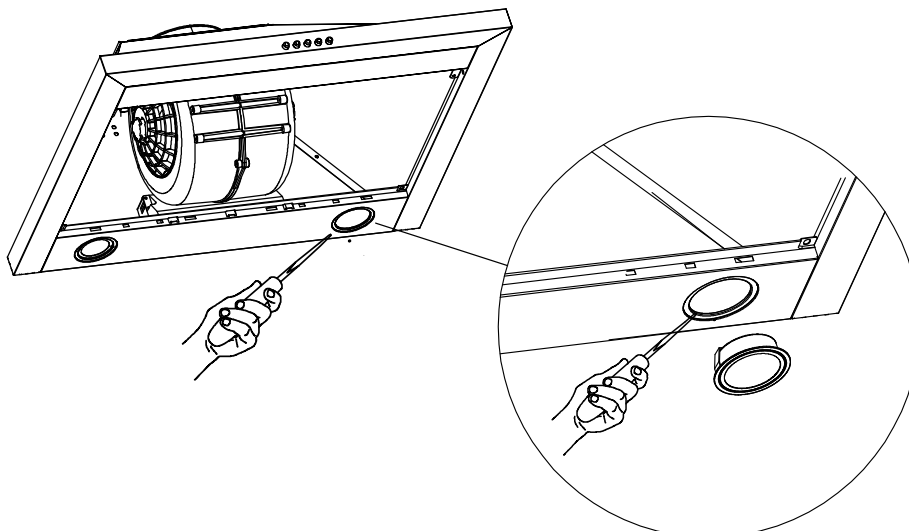
Before cleaning or repairing and replacing accessories, please make sure to shut down the power before operation, so as to avoid electric shock, damage to human body and even endanger life safety!



1. Turn off the hood and unplug the power outlet. Detach the grease filter in order for you to replace the LED lamp.



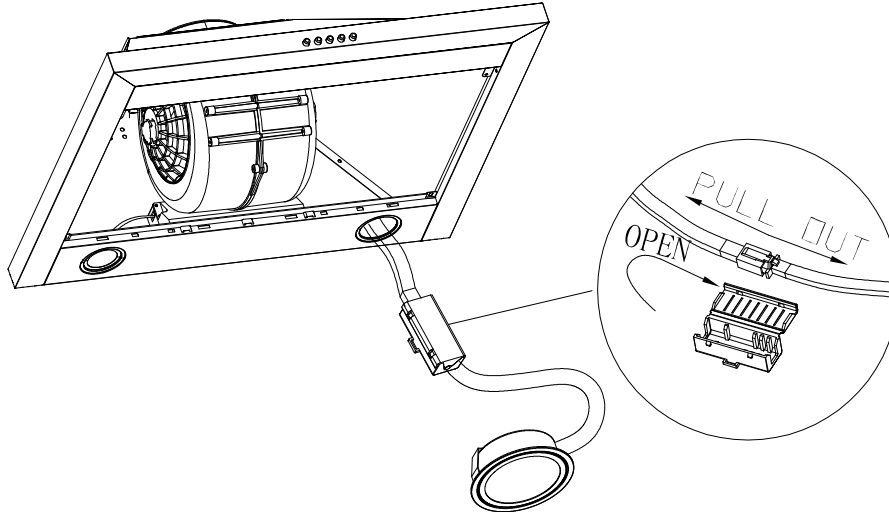
2. Push the LED lamp holder out from the cabinet by hand, or use screwdriver to prize up the LED lamp around the edges, pull out slotted the LED lamp and the wire together.



# Cleaning and Maintenance

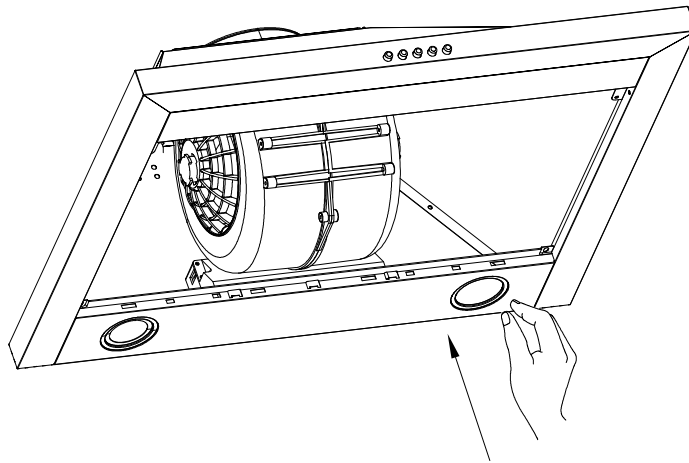
---

3. Open the power protection cover, pull out the plug and replace the corresponding model of the LED lamp.

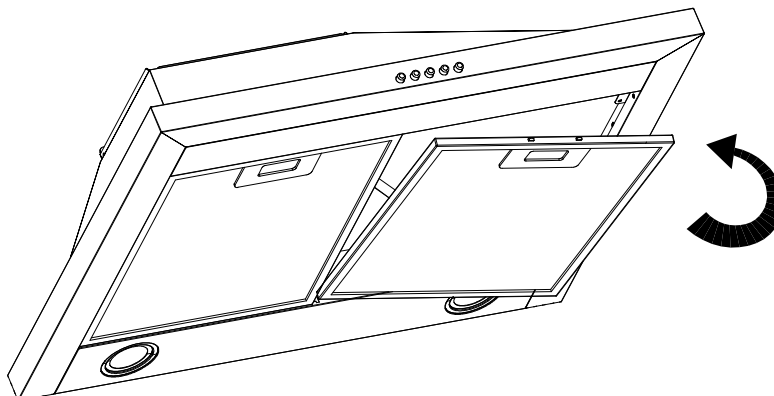


4. Turn the power on and test all blower and light functions to ensure they are operating properly.

Insert the new LED light gently into the light socket, please make sure you aim at the grooves on the lighting panel when installing. Push the LED light in until it is flushed with the light panel.



5. Put the grease filter back on, you are good to go.



# Troubleshooting

| Problem                            | Possible Cause   | Solution  |
|------------------------------------|--|---|
| Extractor hood does not turn on    | No electrical supply   | Make sure that range hood is plugged into powered outlet. Test outlet with other device if not working  |
| My range hood has poor performance | Inadequate ventilation   | Ensure that the kitchen is sufficiently ventilated to allow entry of fresh air  |
|                                    | The range hood and cooktop are too far away from each other  | Optimal distance is 65~75cm above the cooktop for best extraction   |
|                                    | Check and make sure the tape holding down the damper flaps at the vent hole are removed before use | Remove the tape holding down the damper   |
|                                    | Grease filters clogged with grease build-up  | Clean the grease filters or replace the grease filters  |
|                                    | Carbon filters clogged with grease build-up  | Replace new carbon filters  |
|                                    | Motor is running but no extraction   | Please contact CIARRA Customer Care Service   |
| My range hood is noisy             | Check inside the range hood for any loose debris and remove  | Please contact CIARRA Customer Care Service   |
|                                    | If the noise is from the motor, please contact our Customer Care Service                           |   |
| Lights are not working             | Light is damaged   | Replace with new LED lamp; remove grease filters, reach inside behind the control panel and locate the wire with clip behind the light housing. |
|                                    | The light wire terminal is loose   | Reset the connection  |

If problem persists after the above checks, please contact CIARRA Customer Care Centre for assistance.

# Environmental Protection

---

Waste electrical products should not be disposed of with household waste. Please recycle where facilities exist. Check with your Local Authority or retailer for recycling advice.



By ensuring this product is disposed of correctly, you will help prevent potential negative consequences for the environment and human health, which could otherwise be caused by inappropriate waste handling of this product.

The symbol on the product indicates that this product may not be treated as household waste. Instead it shall be handed over to the applicable collection point for the recycling of electrical and electronic equipment.

Disposal must be carried out in accordance with local environmental regulations for waste disposal.

For more detailed information about treatment, recovery and recycling of this product, please contact your local city office, your household waste disposal service or the shop where you purchased the product.