

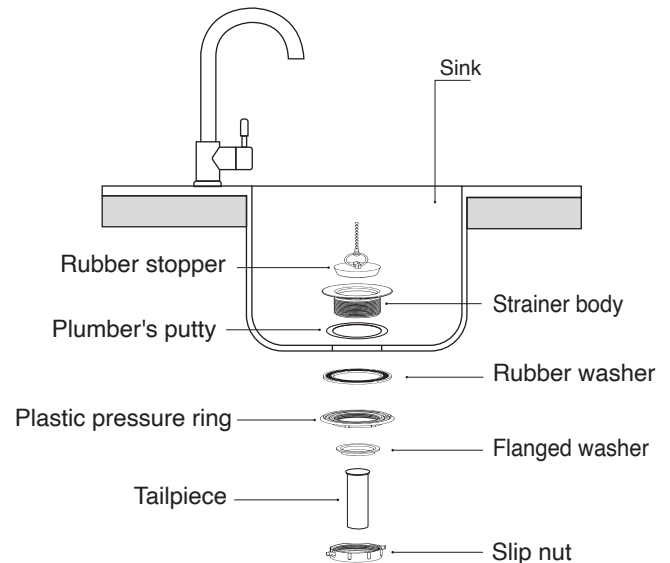
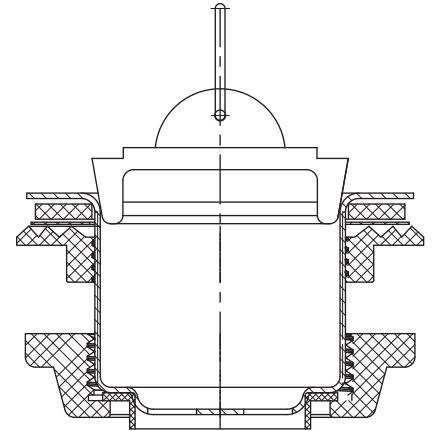


ITEM #: 5256824
MODEL #: KY-0617

Bar Sink Plug

DIRECTIONS:

1. Remove all components from strainer body.
2. Apply plumber's putty between the strainer and sink.
3. Insert strainer body firmly in place while installing under the sink, first rubber washer and next plastic pressure ring, with the flat side against the rubber washer. Hand-tighten firmly.
4. Place flanged tailpiece washer onto tailpiece and install slip nut with threads upward on the tailpiece. Screw slip nut onto the threaded shank of the strainer body. Tighten firmly with wrench.



PROJECT SOURCE and logo design are trademarks or registered trademarks of LF, LLC. All rights reserved.

Questions, problems or missing parts? Before returning, contact us on: **866-439-9800**, 8 a.m. - 8 p.m., EST, Monday - Sunday or **ascs@lowes.com**.