

# Create Your Outdoor Escape



## Home Exteriors



## Fire Features



## Accent Walls



## Outdoor Kitchens & Grill Stations



## 3 Easy Steps

- 1 - Plan your project
- 2 - Select your stone
- 3 - Install it with Grip & Grab Adhesive



Drakestone



Birch Haven



Cobblebrook



Wright City

Shop the Collection at [Lowes.com/AOOutdoor](https://www.lowes.com/AOOutdoor)





AMERICAN OLEAN®  
PROVEN IN TILE

# Installation Instructions

## Stone Veneer

### INSTALLATION GUIDE

This installation guide is applicable to the following collections:

Drakestone Natural Stone Ledgerstone

Birch Haven Manufactured Stone

Cobblebrook Manufactured Stone

### TECHNICAL NOTES:

#### **Usage:**

These products are suitable for interior and exterior applications in freezing and nonfreezing climates

#### **Maximum Weight:**

Most building codes allow a maximum weight of 15 lbs/sq.ft. Please refer to local building codes to be in compliance with established requirements.

#### **Maximum Height:**

Most building codes allow a maximum application height of 30 feet, but increased heights may be permitted where engineering analysis is provided and approved. Please refer to local building codes to be in compliance with established requirements.

#### **Protection:**

Provide for dry, heated storage on site and deliver materials at least 24 hours before installation begins. For a least 21 days after completion, protect finished product from freezing and do not immerse in water.

Temperature and humidity (during and after the installation of tile) affect the final curing time, allow for extended periods for curing and protection when temperatures drop below 60°F (16°C) and/or when the relative humidity is higher than 70%.

#### **Surface Preparation:**

Please ensure that the substrate is structurally sound, clean, and dry. Prior to installation, the surface shall be protected and free of frost and any contaminant that may reduce or prevent adhesion.

#### **Waterproof Membrane:**

Install waterproof membrane based on the manufacturer's installation recommendation.

#### **Cutting Recommendations:**

Use a wet saw with a diamond blade for cutting natural stone.

#### **Adhesive, Mortar Installation Instructions:**

Ensure full bedding of each piece into the mortar bed and back butter each piece to achieve the required 100% coverage. When placing the pieces, slide it back and forth perpendicularly to the trowel ridges and press it into position until mortar squeezes out from the edges. This and 100% coverage of mortar between the substrate and the stone will ensure structural integrity and endurance.



**AMERICAN OLEAN®**  
PROVEN IN TILE

# Installation Instructions

## Stone Veneer

### **Grouting:**

Drakestone and Birch Haven Collections do not require grouting. If filling the gaps is preferred, grout can be applied in between gaps using a grout bag.

Cobblebrook Collection can be a grouted or groutless installation. A grout bag should be utilized to apply the grout in joints between pieces.

### **Substrates:**

There are many types of substrates for vertical interior/exterior applications. The most common are the following:

- Concrete/Masonry/ Brick
- Cementitious backer board unit
- Surface coated with Veneer Waterproofing Membrane
- Stucco (Scratch coat, brown coat, and metal lath required when installing on stucco)

### **INSTALLATION METHODS AND RECOMMENDED PRODUCTS:**

1. TCNA Method W201-09, Walls, Exterior and Interior, over Masonry, Cement Mortar, or Brick

#### **MAPEI Products:**

Mortar Bed: MAPEI 4to 1 Mud Bed Mix blended with Planicrete® AC (or job-site mix). For Thin-Set installation, use MAPEI Ultraflex™ LFT as Bond Coat. For Rapid-Setting and Efflorescence Free: MAPEI Granirapid® System.

2. TCNA Method: W202: Cement Mortar over Masonry

#### **MAPEI Products:**

Latex-Portland Cement Mortar over Masonry

Thin-Bed Method use either MAPEI, Ultraflex LFT - premium, non-sag, large-and-heavy-tile mortar or MAPEI Granirapid – rapid setting and efflorescence free mortar as the bond coat.

3. TCNA Method: W211-09; Walls, Mortar Bed:

#### **MAPEI Products:**

MAPEI 4 to 1 Mud Bed Mix blended with Planicrete AC (or job-site mix). For Thin-Set installation, use either MAPEI Ultraflex LFT - premium, non-sag, large-and-heavy-tile mortar or MAPEI Granirapid – rapid setting and efflorescence free mortar as the bond coat.

4. TCNA Method W244-09: Walls Exterior, Interior, Cement Backer Board Waterproofing (required for Exterior and Interior wet areas)

#### **MAPEI Products:**

Thin-Bed Method use either MAPEI Ultraflex LFT - premium, non-sag, large-and-heavy-tile mortar or MAPEI Granirapid – rapid setting and efflorescence free mortar as the bond coat.

5. TCNA Method: W202: Cement Mortar over Cement Based Stucco



**AMERICAN OLEAN®**  
PROVEN IN TILE

# Installation Instructions

## Stone Veneer

### **MAPEI Products:**

Latex-Portland Cement Mortar over Cement Based Stucco

Thin-Bed Method use either MAPEI Ultraflex LFT - premium, non-sag, large-and-heavy-tile mortar or MAPEI Granirapid – rapid setting and efflorescence free mortar as the bond coat.

Cement stucco basecoat must be installed as an equivalent to ANSI 108.1A standards and ASTM C926 for the for Application of Portland Cement-Based Plaster. Use metal lath complying with ASTM C847 specifications with either factory blended or the recommended sand and cement mix for the scratch and leveling (brown) coat. The stucco must moist cured and achieve minimum tensile pull bond strengths of 72 psi and be structurally sound, clean, dry and properly prepared. Stucco basecoats must be power-washed to remove contaminants. Stucco with an acrylic finish or paint must be sand-blasted to remove the finish or paint prior to veneer stone installation. For further information contact the MAPEI Product Support at 1-800-992-6273.

### **Installation Material Accessories**

Waterproof Membrane

### **MAPEI Products:**

Interior/Exterior, MAPEI, Mapelastic AquaDefense.

Bond coat mortar

Ultraflex LFT

Granirapid

Grout

### **MAPEI Products:**

Ultracolor Plus FA

Wright City – Ivory 39

Cobblebrook Beige – Biscuit 14

Cobblebrook Gray – Frost 77



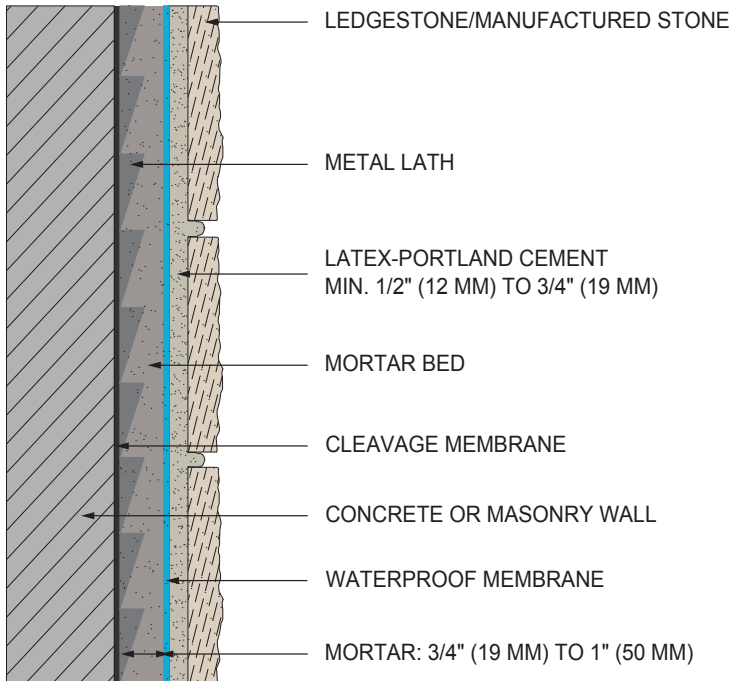


AMERICAN OLEAN®  
PROVEN IN TILE

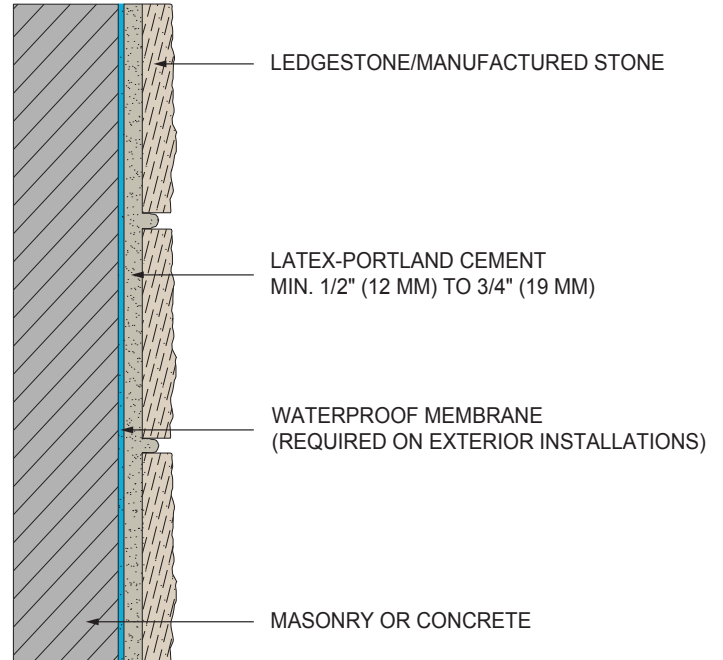
# Installation Instructions

## Stone Veneer

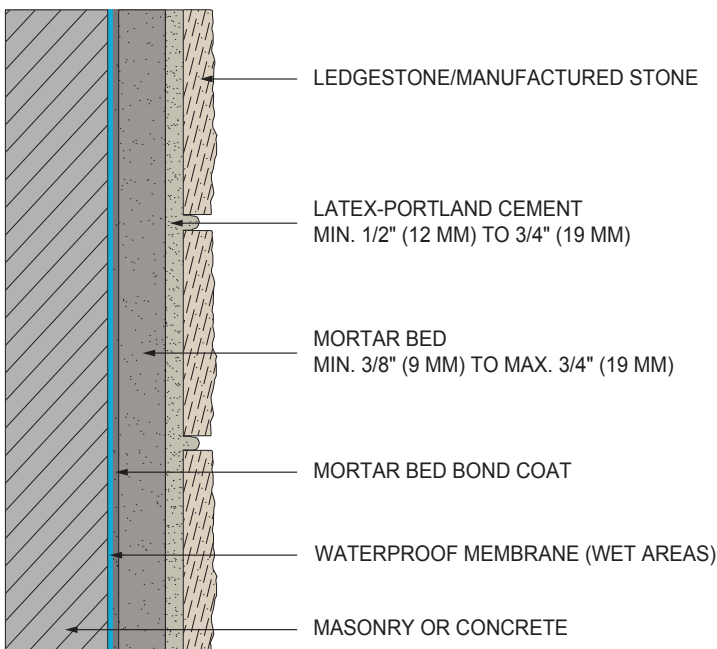
### TCNA Method W201



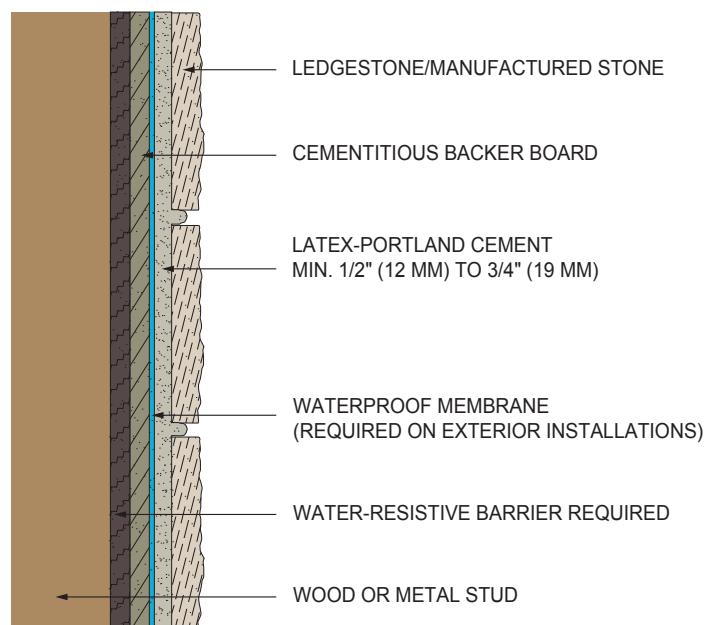
### TCNA Method W202



### TCNA Method W211



### TCNA Method W244







AMERICAN OLEAN®  
PROVEN IN TILE

# Installation Instructions

## Stone Veneer

| Chemical & Physical Properties |   |                                  |
|--------------------------------|---|----------------------------------|
| Chemical Properties            | Chemistry Type                                | Advanced Hybrid Polymer          |
|                                | VOC Content (calculated per SCAQMD Rule 1168) | <15 g/L                          |
| Application Properties         | Hardness, Shore A                             | 55                               |
|                                | Peel Strength                                 | >14 lbf/in                       |
|                                | Extrusion Rate                                | 20 g/min                         |
|                                | Density                                       | 1.53 g/mL                        |
|                                | Flow  | <2 mm                            |
|                                | Tack Free Time                                | <30 min                          |
|                                | Cold Temp Flexibility                         | Pass                             |
|                                | Tensile Strength                              | 2,20 N/mm <sup>2</sup>           |
|                                | Elongation at Break                           | 335%                             |
|                                | Odor  | None                             |
|                                | Color   | White                            |
|                                | Shelf Life                                    | 12 months, unopened              |
|                                | Application Temperature                       | 0°F to 105°F<br>(-17°C to 40°C)  |
|                                | Service Temperature                           | -40°F to 90°F<br>(-40°C to 32°C) |
| Cured Physical Properties      | Cure Time                                     | 24 hours                         |
|                                | Skinning Time                                 | 15 mins @ 73°F (23°C)            |
|                                | Paintability                                  | With most paints                 |





AMERICAN OLEAN®  
PROVEN IN TILE

# Installation Instructions

## Stone Veneer

### Installation Instructions for use with Bostik Grip N Grab

#### **DIRECTIONS FOR USE**

All surfaces must be clean, structurally sound and free of contaminants such as dust, dirt, loose particles, oil and grease. For best results, use on a dry surface. Cut the cartridge seal and screw on attached V-notch applicator tip. Hold cartridge at 90° angle relative to substrate for optimum bead size and shape. Apply adhesive on one surface only in vertical strips, approximately 3-5" apart. Immediately place item into position, press firmly together with a slight twisting motion and firmly hold for five seconds to give an optimum initial grab. **NOTE:** On heavier items and overhead applications, mechanical bracing is recommended during curing process.

#### **COVERAGE**

9.5 fl oz cartridge equates to 150 linear inches and the substrate coverage of 1.7 inches of standard sized bead per pound of substrate.

#### **CLEAN UP**

Promptly clean tools and excess material with mineral spirits before product cures.

#### **STORAGE AND SHELF LIFE**

Store in cool, dry area between 50°F – 80°F (10°C - 27°C). Shelf life

#### **APPLICATIONS**

- Mirrors
- Molding & trim
- Tub surrounds
- Backsplash
- Landscape applications
- Paneling
- Cement board
- Vertical shelving
- Vertical concrete
- Cove base
- Ledger stone & panels
- Veneer stone
- Thin brick
- Drywall to wood & metal studs
- Cement board to wood & metal studs
- Foam backer boards