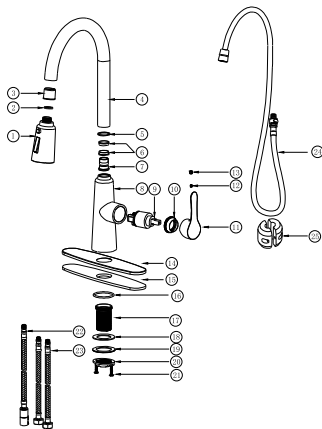
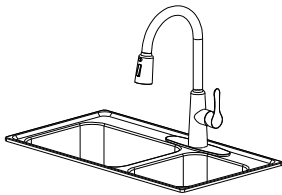
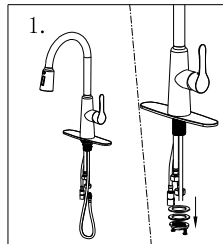


If you have any questions,
please feel free to contact
us.
Email: lowesteam@animalife.com

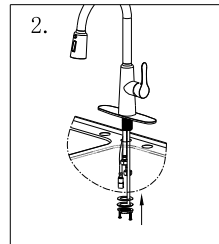
Product installation instructions



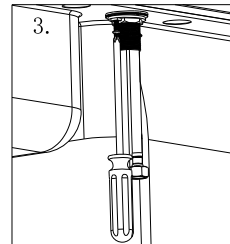
23	Gravel pit	Cast iron	1
24	Joist	Combustible pipe	1
25	Water inlet pipe	Combustible pipe	2
22	Outlet pipe	Combustible pipe	1
23	Flashed hot water	Stainless steel	1
20	Flashed cold water	Stainless steel	1
19	Flue	Stainless steel	1
18	Flue	Stainless steel	1
17	Flue	Stainless steel	1
16	Flue	Stainless steel	1
15	Flue	Stainless steel	1
14	Flue	Stainless steel	1
13	Decorative baffle	Plastic	1
12	Hanger support	Stainless steel	1
11	Handicover	Stainless steel	1
10	Grate	Stainless steel	1
9	Spout	Combustible pipe	1
8	Spout	Combustible pipe	1
7	Lock the door	Stainless steel	1
6	Shaft	PCM	2
5	Water-resistant ring	PCM	1
4	Curved pipe	Stainless steel	1
3	Shaft	PCM	1
2	Flue	Stainless steel	1
1	Spout	Plastic	1
Number	Name	Material	Quantity



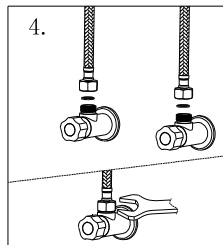
Take out the faucet from the package, unscrew the retaining nut, and take out the steel pad and rubber pad.



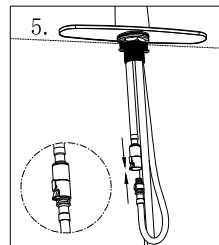
Insert all water pipes into the openings of the sink, and then reinstall the rubber pad, steel pad and retaining nut.



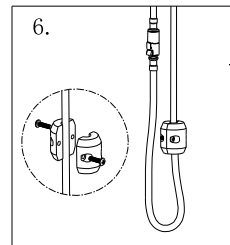
Tighten the two round head screws with a screwdriver.



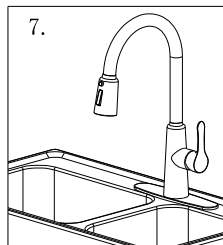
Connect the inlet pipe to the outlet angle valve and tighten it.



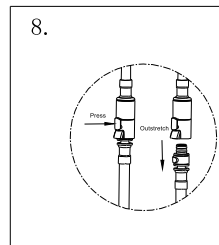
Connect the inlet and outlet pipe



Install gravity ball.



Installation complete.



Pipe disassembly method.