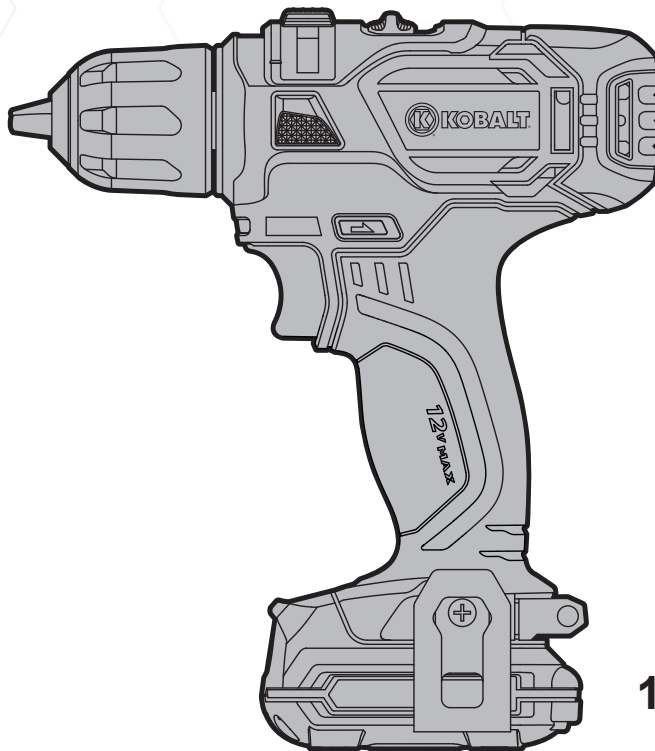




NEXT GENERATION OF TOUGH TOOLS™



ITEM #0233384

12 V DRILL DRIVER

MODEL #CDT212KU

Français p. 15

Español p. 29

KOBALT® and the K Design® are registered trademarks of LF, LLC. All Rights Reserved.

ATTACH YOUR RECEIPT HERE

Serial Number _____ Purchase Date _____



Questions, problems, missing parts? Before returning to your retailer, call our customer service department at 1-888-3KOBALT (1-888-356-2258), 8 a.m. - 8 p.m., EST, Monday - Friday.

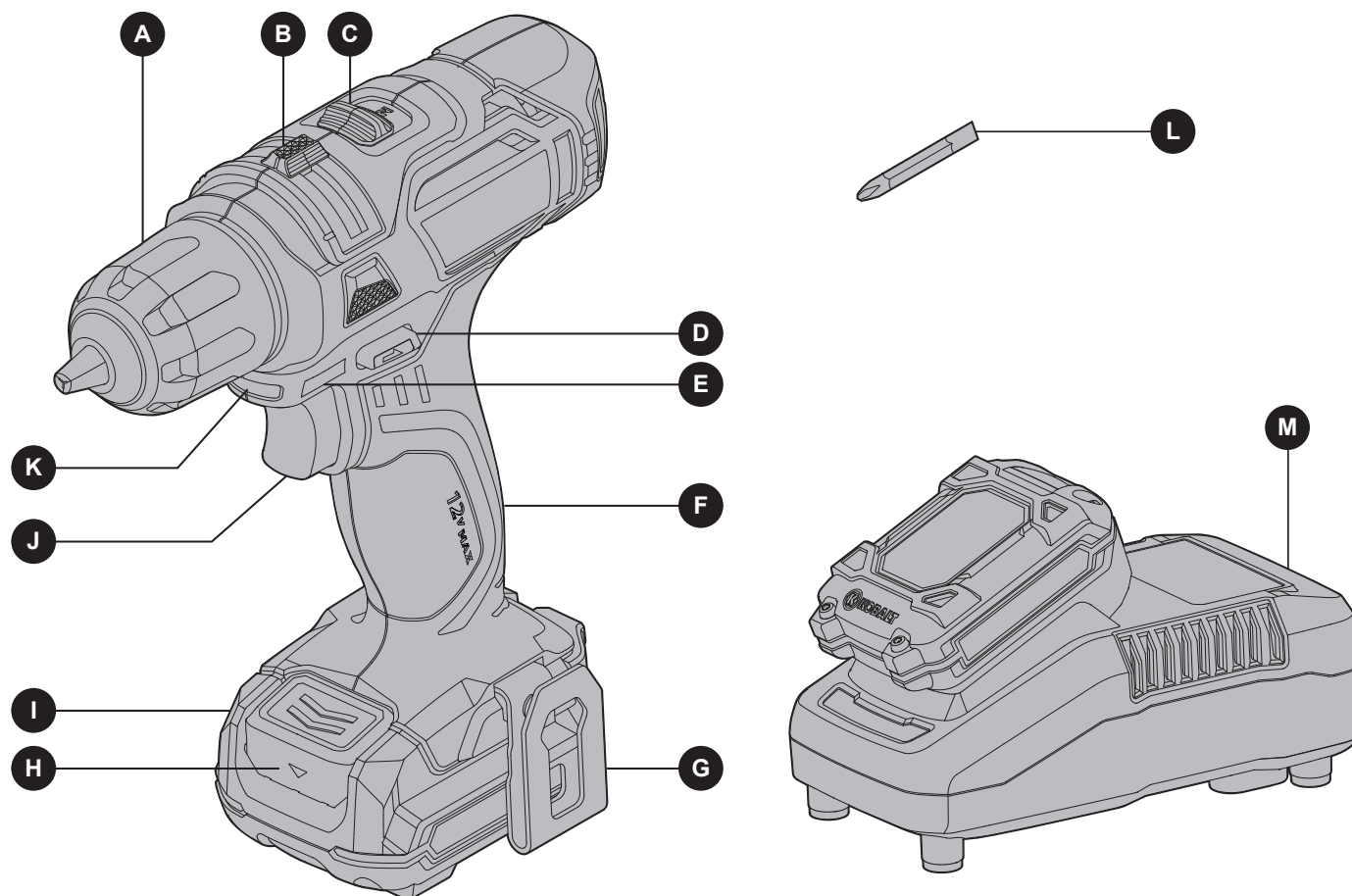
TABLE OF CONTENTS

Product Specifications	2
Package Contents	3
Safety Information	4
Operating Instructions	8
Care and Maintenance	13
Troubleshooting	13
Warranty	14
Replacement Parts List	14

PRODUCT SPECIFICATIONS

COMPONENT		SPECIFICATIONS
Charger Voltage		120 V ~ 60 Hz
Rated Voltage		12 V
No Load Speed		330/1,200min.
Number of Clutch Positions		15+1
Max Torque		210 in.-lbs.
Chuck Capacity		3/8 in.
Max. Drilling Capacity	Steel	3/8 in.
	Wood	13/16 in.
Charging Time		35 min.
Machine Weight		2.6 lbs.

PACKAGE CONTENTS



PART	DESCRIPTION
A	Keyless Chuck
B	E-Torque Selector
C	Two-Speed Gear Control
D	Forward/Reverse Rotation Control
E	Fuel Gauge
F	Soft Grip Handle
G	Belt Clip

PART	DESCRIPTION
H	Battery Release Button
I	Battery Pack
J	On/Off Switch
K	LED Light
L	Double-Sided Bit
M	Charger



SAFETY INFORMATION

Please read and understand this entire manual before attempting to assemble, operate or install the product. If you have any questions regarding the product, please call customer service at 1-888-3KOBALT (1-888-356-2258), 8 a.m. - 8 p.m., EST, Monday - Friday.

This instruction manual contains important information necessary for the proper assembly and safe use of this tool. Read and follow all warnings and instructions before assembling and using this tool.



CALIFORNIA PROPOSITION 65

- Some dust created by power sanding, sawing, grinding, drilling and other construction activities contains chemicals known to the state of California to cause cancer, birth defects or other reproductive harm.
- A listing of these chemicals can be obtained from www.oehha.ca.gov.
- Some examples of these chemicals are lead from lead-based paints, crystalline silica from bricks and cement and other masonry products, and arsenic and chromium from chemically treated lumber.
- Your risk from these exposures varies, depending on how often you do this type of work. To reduce your exposure to these chemicals: work in a well-ventilated area, and work with approved safety equipment, such as a respirator or dust mask specially designed to filter out microscopic particles.



GENERAL POWER TOOL SAFETY WARNINGS

Read all safety warnings and instructions. Failure to follow the warnings and instructions may result in electric shock, fire and/or serious injury.

The term power tool in the warnings refers to your electric (corded) power tool or battery operated (cordless) power tool.

Save all warnings and instructions for future reference.

WORK AREA SAFETY

- Keep work area clean and well lit.
- Cluttered or dark areas invite accidents.
- **DO NOT** operate power tools in explosive atmospheres, such as in the presence of flammable liquids, gases or dust. Power tools create sparks which may ignite the dust or fumes.
- Keep children and bystanders away while operating a power tool. Distractions can cause you to lose control.

ELECTRICAL SAFETY

- Power tool plugs **MUST** match the outlet. **NEVER** modify the plug in any way. **DO NOT** use any adapter plugs with grounded power tools. Unmodified plugs and matching outlets will reduce risk of electric shock.
- Avoid body contact with grounded surfaces such as pipes, radiators, ranges and refrigerators. There is an increased risk of electric shock if your body is grounded.
- **DO NOT** expose power tools to rain or wet conditions. Water entering a power tool will increase the risk of electric shock.
- **DO NOT** abuse the cord. **NEVER** use the cord for carrying, pulling or unplugging the power tool. Keep cord away from heat, oil, sharp edges or moving parts. Damaged or entangled cords increase the risk of electric shock.



SAFETY INFORMATION

- When operating a power tool outdoors, use an extension cord suitable for outdoor use marked “W-A” or “W”. Use of a cord suitable for outdoor use reduces the risk of electric shock.
- If operating a power tool in a damp location is unavoidable, use a Ground Fault Circuit Interrupter (GFCI) protected supply. Use of a GFCI reduces the risk of electric shock.

PERSONAL SAFETY

- Stay alert, watch what you are doing and use common sense when operating a power tool.
DO NOT use a power tool while you are tired or under the influence of drugs, alcohol or medication. A moment of inattention while operating power tools may result in serious personal injury.
- Use personal protective equipment. **ALWAYS** wear eye protection. Protective equipment such as dust mask, non-skid safety shoes, hard hat, or hearing protection used for appropriate conditions will reduce personal injuries.
- Prevent unintentional starting. Ensure the switch is in the off position before connecting to power source and/or battery pack, picking up or carrying the tool. Carrying power tools with your finger on the switch or energizing power tools that have the switch on invites accidents.
- Remove any adjusting key or wrench before turning the power tool on. A wrench or a key left attached to a rotating part of the power tool may result in personal injury.
- **DO NOT** overreach. Keep proper footing and balance at all times. This enables better control of the power tool in unexpected situations.
- Dress properly. **DO NOT** wear loose clothing or jewelry. Keep your hair, clothing and gloves away from moving parts. Loose clothes, jewelry or long hair can be caught in moving parts.
- If devices are provided for the connection of dust extraction and collection facilities, ensure these are connected and properly used. Use of dust collection can reduce dust-related hazards.

POWER TOOL USE AND CARE

- **DO NOT** force the power tool. Use the correct power tool for your application. The correct power tool will do the job better and safer at the rate for which it was designed.
- **DO NOT** use the power tool if the switch does not turn it on and off. Any power tool that cannot be controlled with the switch is dangerous and must be repaired.
- Disconnect the plug from the power source and/or the battery pack from the power tool before making any adjustments, changing accessories, or storing power tools. Such preventive safety measures reduce the risk of starting the power tool accidentally.
- Store idle power tools out of the reach of children and do not allow persons unfamiliar with the power tool or these instructions to operate the power tool. Power tools are dangerous in the hands of untrained users.
- Maintain power tools. Check for misalignment or binding of moving parts, breakage of parts and any other condition that may affect the power tool's operation. If damaged, have the power tool repaired before use. Many accidents are caused by poorly maintained power tools.
- Keep cutting tools sharp and clean. Properly maintained cutting tools with sharp cutting edges are less likely to bind and are easier to control.
- Use the power tool, accessories and tool bits, etc., in accordance with these instructions and in the manner intended for the particular type of power tool, taking into account the working conditions and the work to be performed. Use of the power tool for operations different from those intended could result in a hazardous situation.



SAFETY INFORMATION

BATTERY TOOL USE AND CARE

- Recharge only with the charger specified by the manufacturer. A charger that is suitable for one type of battery pack may create a risk of fire when used with another battery pack.
- Use power tools only with specifically designated battery packs. Use of any other battery packs may create a risk of injury and fire.
- When battery pack is not in use, keep it away from other metal objects, like paper clips, coins, keys, nails, screws or other small metal objects, that can make a connection from one terminal to another. Shorting the battery terminals together may cause burns or a fire.
- Under abusive conditions, liquid may be ejected from the battery; avoid contact. If contact accidentally occurs, flush with water. If liquid contacts eyes, additionally seek medical help. Liquid ejected from the battery may cause irritation or burns.

SERVICE

- Have your power tool serviced by a qualified repair person using only identical replacement parts. This will ensure that the safety of the power tool is maintained.

DRILL SAFETY WARNINGS

- Hold power tool by insulated gripping surfaces when performing an operation where the cutting accessory may contact hidden wiring. Cutting accessory contacting a “live” wire may make exposed metal parts of the power tool “live” and could give the operator an electric shock.

GENERAL SAFETY WARNINGS FOR BATTERY PACK



WARNING:

- Risk of fire and burns. **DO NOT** disassemble, heat above 100°C (212°F), or incinerate.
- **DO NOT** expose cells or batteries to heat or fire. Avoid storage in direct sunlight.
- **DO NOT** use a visibly damaged battery pack or appliance as applicable.
- **DO NOT** modify or attempt to repair the appliance or the battery pack as applicable.
- Dispose of used batteries promptly according to local recycling or waste regulations.
- Dispose of used battery promptly. **DO NOT** dispose of in fire.
- Keep battery out of reach of children and in original package until ready to use.
- **NEVER** put batteries in mouth. If swallowed, contact your physician or local poison control center.

CAUTION

- The battery used in this device may present a risk of fire or chemical burn if mistreated. Replace battery with same Kobalt 12 V battery only. Use of another battery may present a risk of fire or explosion.
- Please read and understand this entire manual before attempting to assemble, operate or install the product.



SAFETY INFORMATION

- **BATTERY MUST BE RECYCLED.**

- Recharge only with the charger specified by the manufacturer. A charger that is suitable for one type of battery pack may create a risk of fire when used with another battery pack.
- **DO NOT** short-circuit a cell or battery. **DO NOT** store cells or batteries haphazardly in a box or drawer where they may short-circuit each other or be short-circuited by conductive materials.
- **DO NOT** subject cells or batteries to mechanical shock.
- Keep cells and batteries clean and dry. Wipe the cell or battery terminals with a clean dry cloth if they become dirty.
- Secondary cells and batteries need to be charged before use. **ALWAYS** refer to the cell or battery manufacturer's instructions and use the correct charging procedure.
- **DO NOT** maintain secondary cells and batteries on charge when not in use.
- Retain the original cell and battery literature for future reference.
- When disposing of secondary cells or batteries, keep cells or batteries of different electrochemical systems separate from each other.
- Use only the cell or battery in the application for which it was intended.

KEEP THESE INSTRUCTIONS FOR FUTURE REFERENCE.

OPERATING INSTRUCTIONS

USING YOUR BATTERY PACK

Note: Before using the tool, read the instruction book carefully.

! WARNING: The charger and battery pack are specifically designed to work together, so **DO NOT** attempt to use any other devices. **NEVER** insert or allow metallic objects into your charger or battery pack connections because an electrical failure and hazard will occur.

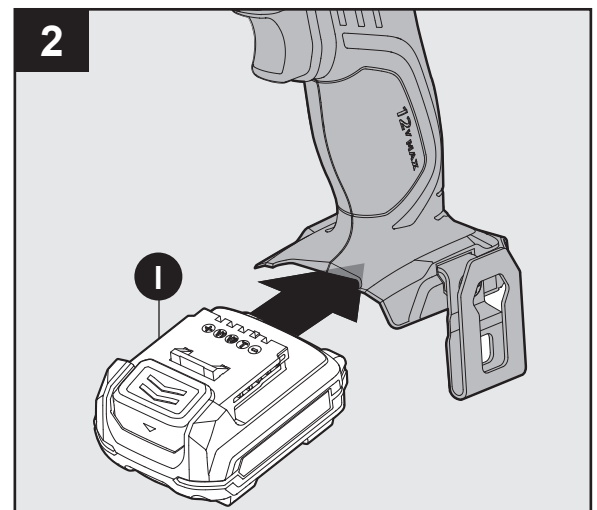
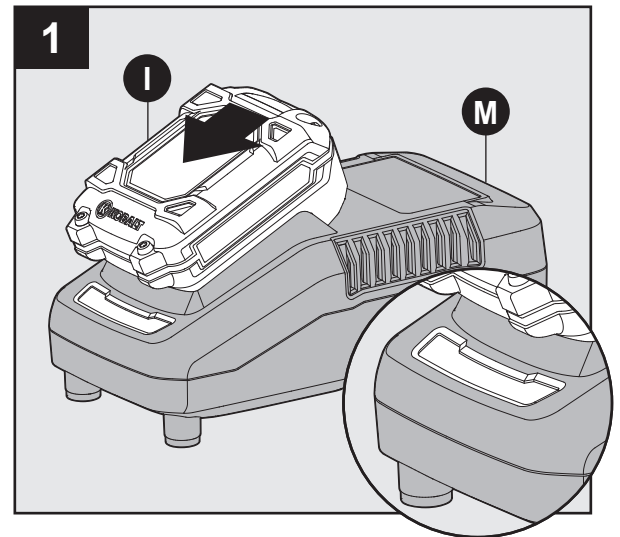
- Your battery pack is **UNCHARGED** and you must charge once before use. When you charge the new battery or one which has not been used for long periods of time, it may not reach full charge until after you have discharged it fully in use and recharged it several times.

1. Plug the charger (M) into an appropriate outlet. The light will be green. Insert the battery pack (I) into the charger. The light will flash red to indicate the charging process has started. On completion of charge, the light will turn solid green. The pack is now fully charged. Unplug the charger and remove the battery pack.

! WARNING

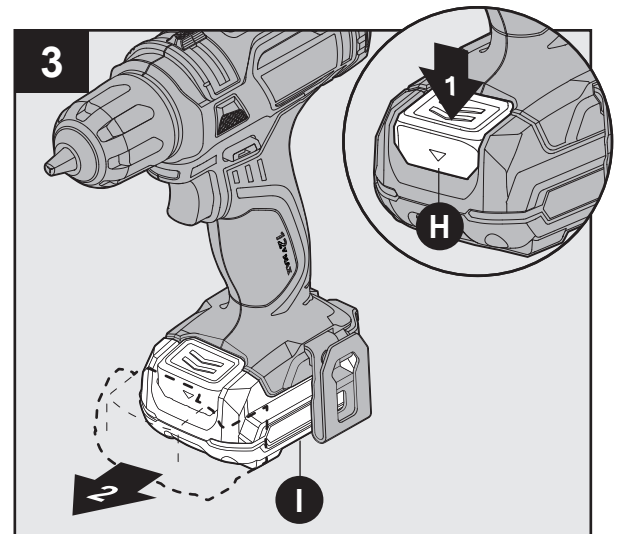
When battery charge runs out after continuous use or exposure to direct sunlight or heat, allow time for the battery to cool down before recharging to achieve the full charge.

2. After recharge, slide the battery pack (I) into the battery port. A simple push and slight pressure will be sufficient.



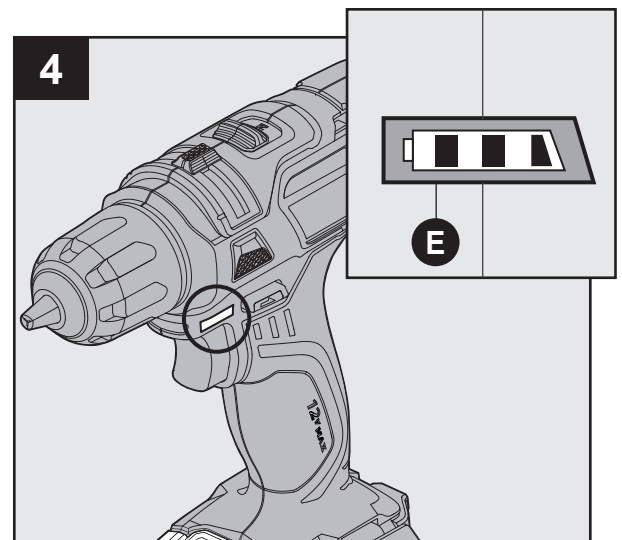
OPERATING INSTRUCTIONS

3. To remove the battery pack (I), depress battery release button (H) and remove the battery pack from your tool.



4. Your tool is equipped with a fuel gauge (E). Press the On/Off switch fully and the fuel gauge will light up for 2-3 seconds to show the amount of charge left in the battery.

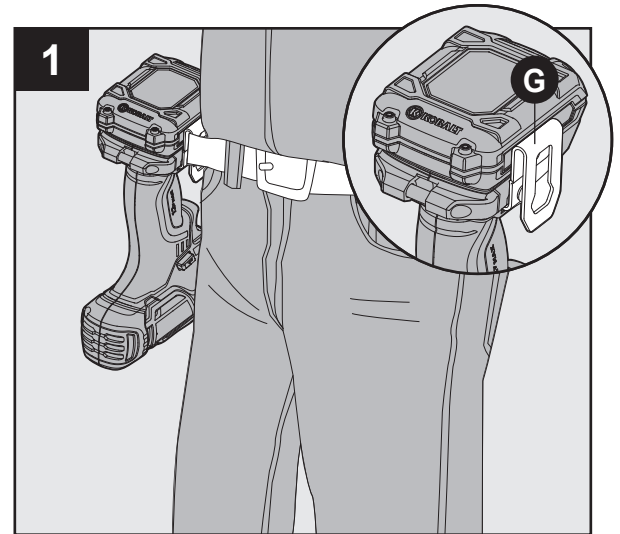
FUEL GAUGE	CAPACITY
3 Red Lights	>2/3
2 Red Lights	>1/3
1 Red Light	<1/3
1 Flashing Light	Reserve



OPERATING INSTRUCTIONS

BELT CLIP

1. The belt clip is attached with a small screw. Simply unscrew the clip to move it to the opposite side of the drill. The belt clip (G) can be hooked on your belt or pocket, etc.



DRILL FEATURES

1. Depress the On/Off switch (J) to start and release it to stop your drill. The LED light (K) will turn on when you press the On/Off switch (J). The On/Off switch is fitted with a brake function which stops your chuck immediately when you quickly release the switch. It is also a variable speed switch that delivers higher speed and torque with increased trigger pressure. Speed is controlled by the amount of switch trigger depression.

WARNING

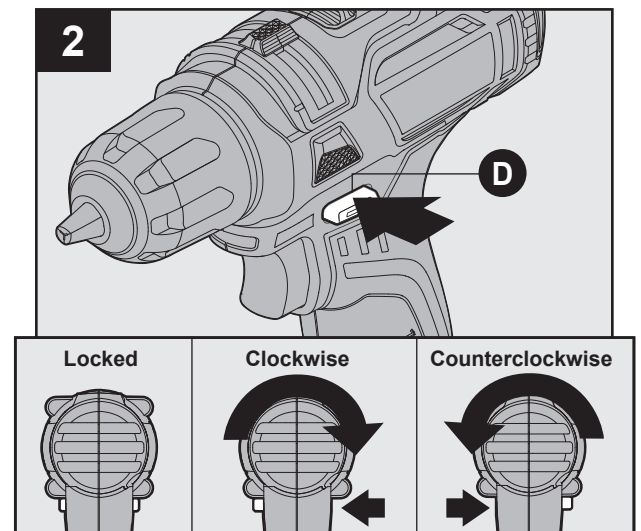
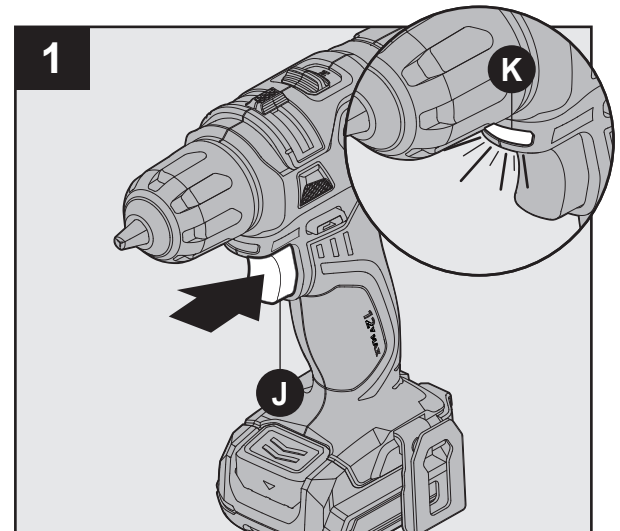
DO NOT operate for long periods at low speed because excess heat will be produced internally.

2. The On/Off switch (J) can be locked in the OFF position. This helps to reduce the possibility of accidental starting when not in use. To lock the On/Off switch, place the forward/reverse rotation control in the center position.

For drilling and screw driving, use forward rotation marked “>>” (forward/reverse rotation control is moved to the left). Only use reverse rotation marked “<<” (forward/reverse rotation control is moved to the right) to remove screws or release a jammed drill bit.

WARNING

NEVER change the direction of rotation when the chuck is rotating. Wait until it has stopped!



OPERATING INSTRUCTIONS

3. The drill has a two-speed gear control (C) designed for drilling or driving at LO (1) or HI (2) speeds. A slide switch is located on top of the drill to select either LO or HI speed. When using the drill in the LO speed range, the speed will decrease and the drill will have greater power and torque. When using the drill in the HI speed range, the speed will increase and the drill will have less power and torque.

GEAR 1: Low speed range for screwdriving or working with large drilling diameter.

GEAR 2: High speed range for working with small drilling diameter.



WARNING

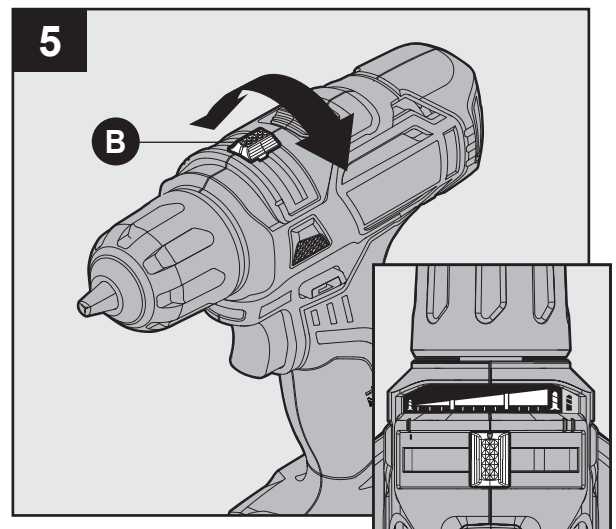
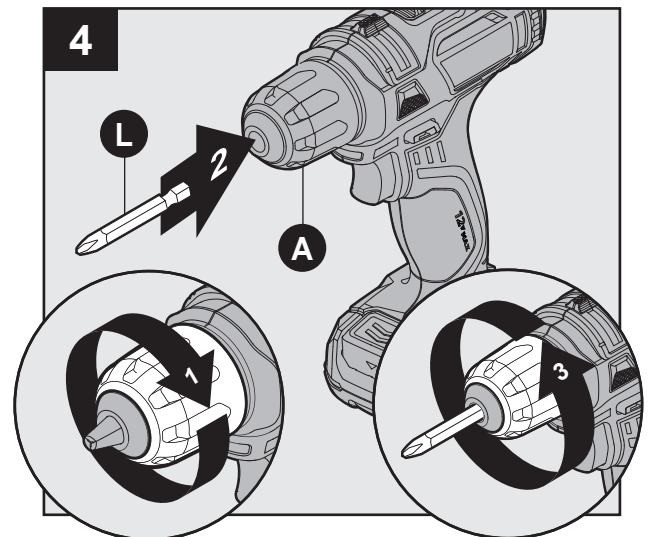
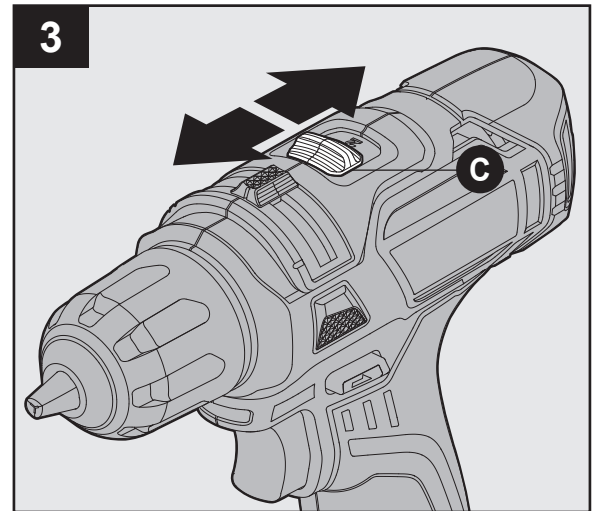
To prevent gear damage, **ALWAYS** allow the chuck to come to a complete stop before changing the gear speed.

4. With the chuck (A) facing you, rotate the chuck counterclockwise to open the jaws. Insert the drill bit between the chuck jaws. Rotate the chuck clockwise to tighten the jaws. Ensure that the drill bit is seated in the center of the jaws.

5. The torque is adjusted by rotating the E-torque selector (B). The torque is greater when the E-torque selector is set on a higher setting. The torque is less when the E-torque selector is set on a lower setting.

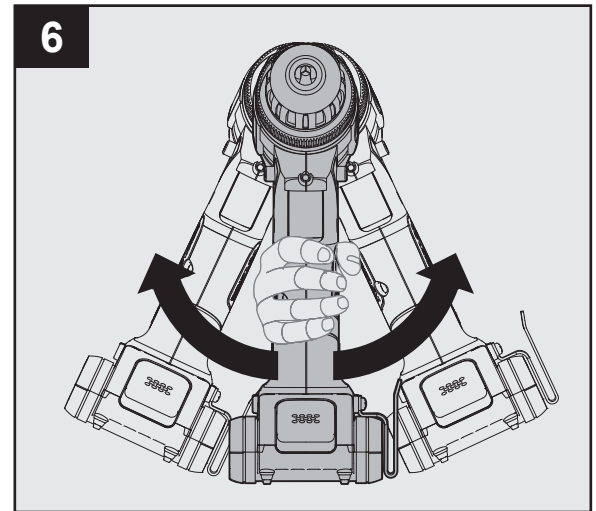
Make the setting as follows:

TORQUE SETTING	PURPOSE
1-4	Driving small screws
5-9	Driving screws into soft material
10-15	Driving screws into soft and hard material
	Heavy drilling



OPERATING INSTRUCTIONS

6. The automatic spindle lock allows you to use the drill as a regular screwdriver. You can give an extra twist to firmly tighten a screw, loosen a very tight screw, or continue working when the battery energy has expired. For manual screwdriver purposes, the chuck is automatically locked when the tool is off.



DRILLING

When drilling into a hard, smooth surface, use a center punch to mark the desired hole location. This will prevent the drill bit from slipping off center as the hole is started. Hold the tool firmly and place the tip of the bit at the point to be drilled. Depress the switch trigger to start the tool. Move the drill bit into the workpiece, applying only enough pressure to keep the bit cutting. **DO NOT** force or apply side pressure to elongate a hole.

WARNING

Tungsten carbide drill bits should always be used for concrete and masonry. When drilling in metal, only use HSS drill bits in good condition. **ALWAYS** use a magnetic bit holder (not included) when using short screwdriver bits. When driving screws, apply a small quantity of liquid soap or similar to the screw threads to ease insertion.

BATTERY DISPOSAL

To preserve natural resources, please recycle or dispose of the battery pack properly. This battery pack contains lithium batteries. Consult your local waste authority for information regarding available recycling and/or disposal options. Discharge your battery pack by operating your drill, then remove the battery pack from the drill housing and cover the battery pack connections with heavy-duty adhesive tape to prevent short circuit and energy discharge. **DO NOT** attempt to open or remove any of the components.

CARE AND MAINTENANCE

Your power tool requires no additional lubrication or maintenance. There are no user serviceable parts in your power tool. **NEVER** use water or chemical cleaners to clean your power tool. Wipe clean with a dry cloth. **ALWAYS** store your power tool in a dry place. Keep the motor ventilation slots clean. Keep all working controls free of dust. Occasionally you may see sparks through the ventilation slots. This is normal and will not damage your power tool.

TROUBLESHOOTING

PROBLEM	POSSIBLE CAUSE	CORRECTIVE ACTION
The drill will not turn on when the On/Off switch is pressed.	The forward/reverse rotation control, which is on top of the trigger, is positioned in the lock function.	Unlock the forward/reverse rotation control by putting it into the required rotation position. Push the On/Off switch and the drill will start to rotate.
The drill stops before the screw is completely tightened.	The torque setting of the E-torque selector is set on a low torque setting.	Position 1 is the lowest torque (screw driving force) and position 15 is the highest torque (screw driving force). Position 16 is for drill operation. Regulate the E-torque selector to a higher position to reach the best result.
Battery pack does not hold a charge or needs to be recharged often.	<ol style="list-style-type: none">1. Battery pack has not been used for a prolonged time.2. Heavy working conditions such as large screws into hard wood.3. Battery pack was charged below 32°F (0°C) or above 113°F (45°C).	<ol style="list-style-type: none">1. This can be corrected after several charge and discharge operations by charging & working with your drill.2. Heavy working conditions will use up the battery pack energy faster. Make sure torque setting is correct.3. The battery pack must be charged between 32°F (0°C) and 113°F (45°C) for optimal use.

WARRANTY

5-YEAR WARRANTY STATEMENT FOR KOBALT 12V CORDLESS COMBO KIT

If this Kobalt tool becomes defective due to faulty materials or workmanship within five (5) years from the date of purchase, the manufacturer guarantees to:

- Replace or repair all defective parts or products, free of charge, or
- Replace the unit with a new or re-conditioned unit, free of charge, or
- Refund the original purchase price.

For guarantee claims, simply return the tool along with proof of purchase to the place of purchase, or contact 1-888-3KOBALT (1-888-2258), 8 a.m. – 8 p.m., EST, Monday – Friday.

Your warranty is subject to the following conditions:

- Battery packs are guaranteed for a three (3) year period only.
- The tool has not been misused, abused, neglected, altered, modified or repaired by anyone other than an authorized service center.
- Only proper accessories and parts have been used on or with the product.
- The tool has been subjected to fair wear and tear.
- The tool has not been used for rental purposes.
- The tool has not sustained damage through foreign objects, substances or accidents.
- Sales receipt must be presented as proof of original purchase.

Your warranty does not cover;

- Components that are subject to natural wear and tear caused by use in accordance with operating instructions.
- Unauthorized/improper maintenance/handling or overload is excluded from this warranty, as are accessories such as bulbs, blades and bits, etc.

This guarantee statement does not replace but is in addition to your statutory rights.

This warranty does not apply to accessories supplied with the tool.

This warranty applies only to the original purchaser and may not be transferred.

All repairs and replacement tools will be covered by the limited warranty for the balance of the warranty period from the date of the original purchase.

REPLACEMENT PARTS LIST

For replacement parts, call our customer service department at 1-888-3KOBALT, 8 a.m. - 8 p.m., EST, Monday – Friday.

PART	DESCRIPTION	PART #
1	12 V Battery	70039758
2	12 V Battery Charger	70039757
3	Belt Hook	70039746
4	Bit Holder	70039754
5	Screw for Hook & Bit Holder	70039747

Printed in China

KOBALT® and the K Design® are registered trademarks of LF, LLC. All Rights Reserved.