

# ROTOSHOVEL

## Operation Manual



**WARNING!** Read before use to ensure operator safety.

Version 220421A

Contents

Richard Goren Enterprises LLC. ....2

Warnings.....3

    GENERAL WARNING .....3

    USER SAFETY .....3

    PRODUCT SAFETY .....3

    ELECTRICAL SAFETY .....3

    BATTERY SAFETY .....4

    CALIFORNIA PROPOSITION 65 .....4

Product Specifications .....4

United States Warranty Information.....4

Product Description .....5

Assembly Instructions.....6

Operating Instructions.....8

    Maintenance.....8

    Battery Maintenance.....8

Richard Goren Enterprises LLC.

9010 Technology Ln.  
Fishers, IN 46038

(317) 360 – **ROTO** (7686)  
[info@rotoshovel.com](mailto:info@rotoshovel.com)

The latest instructional videos, safety information and operation manual can be found at [rotoshovel.com](http://rotoshovel.com)

SCAN ME



# Warnings

## GENERAL WARNING

- Read all safety warnings, instructions provided with this power tool. Failure to follow all instructions listed below may result in electric shock, fire and/or serious injury. Save all warnings and instructions for future reference. The term “power tool” in the warnings refers to the assembled Rotoshovel unit.
- Do not use the power tool if it is known to be malfunctioning in any way. A malfunctioning power tool poses unknown and elevated risks.

## USER SAFETY

- This product is only for use by adults (age 18+). The Rotoshovel is not a toy.
- Keep work area clean and well lit. Do not operate power tool in the presence of explosive liquids, gases, or dust. The power tool might create sparks which could ignite debris.
- Retain distance from children and bystanders when operating the power tool.
- Be aware of your work environment and others nearby. Do not use while under the influence of drugs or alcohol.
- Use protective equipment, including eye and hand protection while operating. Dust masks, non-skid shoes, hard hats and hearing protection used in appropriate conditions reduce personal injuries.
- Do not wear loose clothing or accessories. Avoid contact with moving components of the tool, even when powered off.
- Keep hair secured away from the auger. Hair can be caught in moving components.

## PRODUCT SAFETY

- Keep tool clean during storage. Loose particles can interfere with motor and auger operation.
- Ensure proper operation of the tool before worksite use.
- Remove the battery pack before disconnecting the shovel or auger, ensuring the tool does not power on accidentally.
- Store outside the reach of minors.
- Ensure the tool grip is dry and secure to allow safe operation.
- Remove Allen wrench before use.
- Do not attempt to dig materials other than soil.

## ELECTRICAL SAFETY

- Do not use in wet conditions. Wet conditions increase the likelihood of electric shock.

## BATTERY SAFETY

- Only charge included batteries using the charger included with the Rotoshovel. Using other chargers brings the risk of fire or causing damage to the battery or charger.
- Only use included batteries. Attempting to use other batteries could result in fire or causing damage to the battery or tool.
- Store batteries away from metal materials which could make contact to the battery terminals. Shorting the terminals may cause fire.
- If abused, batteries may leak fluid. Avoid contact and do not use. If fluid is contacted, flush with water. If fluid contacts eyes, seek immediate medical attention. Do not use damaged batteries. Damaged batteries risk fire, explosion or unpredictable behavior.
- Do not expose batteries to temperatures over 265°F (130°C). Doing so may cause the battery to explode.

## CALIFORNIA PROPOSITION 65

This product can expose you to chemicals including cobalt lithium nickel oxide and nickel, which are known to the State of California to cause cancer and birth defects or other reproductive harm. For more information go to [www.P65Warnings.ca.gov](http://www.P65Warnings.ca.gov)

## Product Specifications

<b>Motor</b>	<b>Brushless</b>
<b>Battery</b>	<b>12V 2AH Lithium-Ion</b>
<b>Run Time</b>	<b>2 Hours</b>
<b>Charge Time</b>	<b>2 Hours</b>
<b>Auger Size</b>	<b>3" x 7"</b>
<b>Bit Capacity</b>	<b>1/2"</b>
<b>Unit Length</b>	<b>24"</b>
<b>Unit Weight</b>	<b>5 lbs</b>

## United States Warranty Information

The Rotoshovel includes a 1 year parts and labor warranty (from the date of purchase), applicable to the original owner. Proof of purchase must be included with returned product. Customer is responsible for mandatory prepaid freight and insurance. Warranty is not applicable for products misused, not provided with regular maintenance, disassembled, repaired, or modified by anyone other than Rotoshovel authorized personnel.

## Product Description



1. Battery charger
2. 12 volt 2 amp hour lithium-ion battery
3. Rotashovel – grip, controls, and motor
4. Shovel attachment
5. Auger
6. Allen wrench and spare safety screw



1. Auger
2. Shovel attachment
3. Chuck
4. LED indicator for battery charge, auger direction and safety shutoff
5. Forward and reverse switch
6. Power button
7. Rubber no-slip grip
8. Battery

# Assembly Instructions

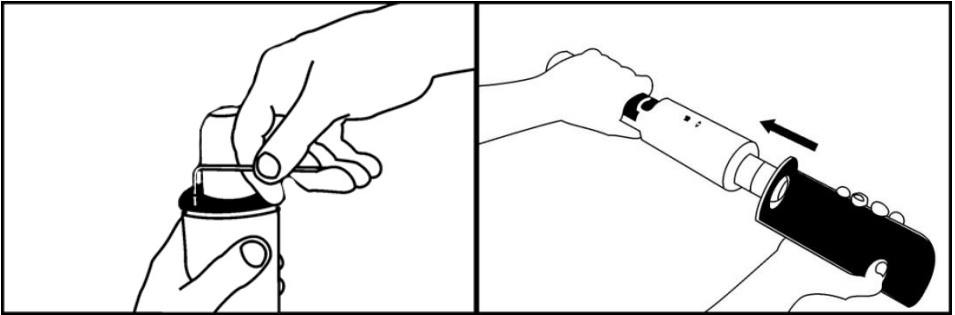
**⚠ WARNING!** Do not insert the battery until assembly is complete.

For a video guide to assembling the Rotoshovel,  
please visit [rotoshovel.com](http://rotoshovel.com) and click “SUPPORT”  
in the top right corner of the page.

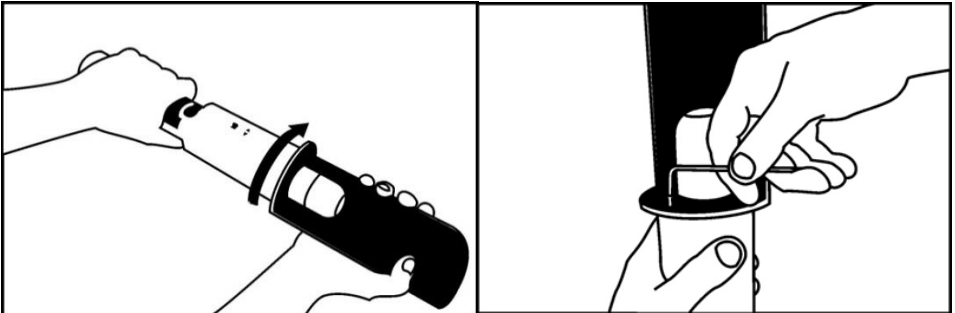
SCAN ME



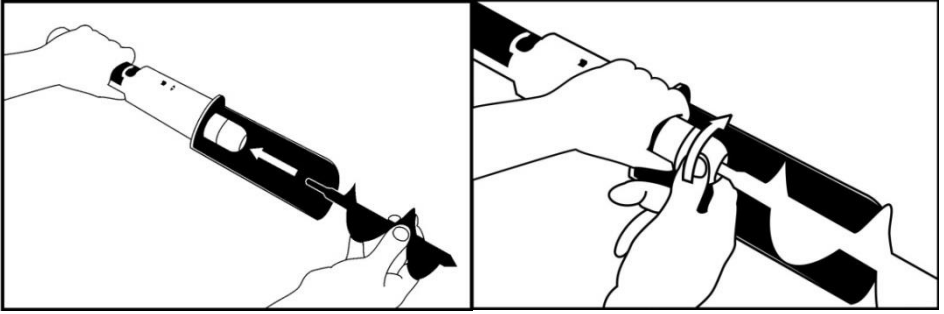
1. Remove the safety screw.
2. Line up the shovel attachment to the chuck (auger-holder) so that the arrow on the shovel collar lines up with the arrow on the Rotoshovel.



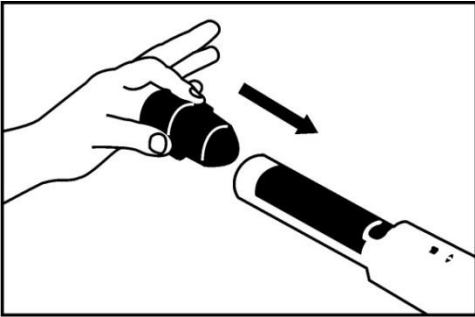
3. Twist the shovel attachment clockwise to line up the screw hole on the Rotoshovel with the screw hole on the shovel.
4. Secure the Rotoshovel to the shovel attachment using the safety screw.



5. Insert the auger into the chuck.
6. Hold the bottom of the chuck and rotate the top clockwise to tighten.  
The chuck requires 40 turns to go from fully open to the closed position.



7. Insert a battery into the handle of the Rotoshovel.
8. Ensure proper functionality before worksite use.



## Operating Instructions

**⚠️WARNING!** Keep clothing and accessories, hands, and others away from the auger while the battery is installed. Secure hair away from the auger.

**Ensure the absence of buried utilities prior to digging!**

---

1. Ensure a stable footing before operating to provide adequate control while digging. Put the Rotoshovel in forward mode.

**⚠️WARNING!** Do not step on the Rotoshovel!

2. The Rotoshovel is designed to dig soil efficiently. Do not attempt to dig other materials.
  3. If the Rotoshovel hits an obstacle, the motor will automatically stop. Release the power switch and ensure the obstacle is removed before continuing to dig.
- 

### Maintenance

1. The Rotoshovel battery takes 2 hours to recharge. The red LED on the charger indicates the battery is charging. The green LED indicates the battery has finished charging.
2. Ensure individual Rotoshovel components are clean before and after use.
3. For cleaning, remove battery and use damp rag to remove debris.

**⚠️WARNING!** Do not saturate the Rotoshovel in water.

---

### Battery Maintenance

1. Don't expose the battery to extreme temperatures. Heat above 140 degrees F or subzero cold can reduce battery life by up to 15 percent.
2. Do not store in direct sunlight.
3. Do not leave the battery fully discharged. Before long periods of storage, charge the battery completely.