

## Model #DV-1K0017

Overall Dimension: 32 11/16" L x 18" W x 10" D

## Features:

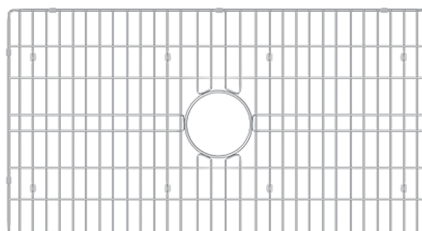
- The sink comes with a basket strainer and sink grid, which help to prevent debris and food scraps from going down the drain, and also protect the sink from scratches and damage.
- With a 33 in. spacious single bowl design, this sink offers ample room for washing large pots and pans, as well as other kitchen items.
- Stylish black finish provides a unique and modern aesthetic that can add a touch of sophistication to any kitchen decor.
- Fireclay material used in this sink is heat and stain-resistant, making it perfect for everyday use in busy kitchens.
- Reversible design allows you choose a flat apron front or fluted apron front depending on your preference.
- It has a standard 3.5-inch drain opening that fits most garbage disposals.



## Package Included:



● Farmhouse Kitchen Sink(DV-1K0017)



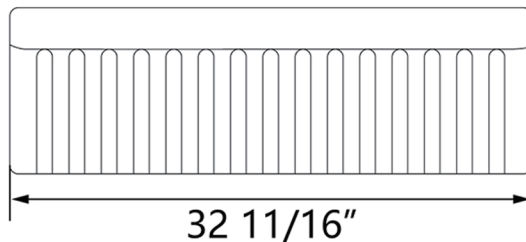
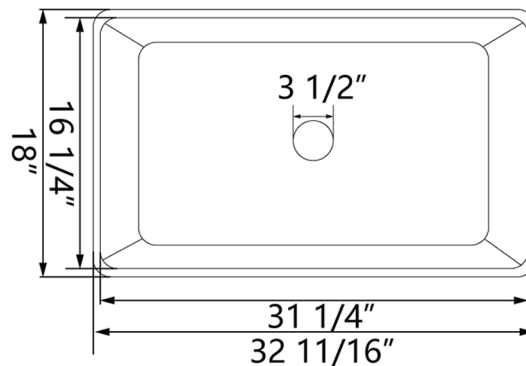
● Sink Grid(DV-1K502G08)



● Basket Strainer(DV-1D905)

## Technical Specifications:

- + Outer: 32 11/16" L x 18" W x 10" D
- + Inner: 31 1/4" L x 16 1/4" W x 9" D
- + Weight: 81.6 lbs
- + Drain: 3 1/2" diameter
- + Cabinet Size: 35 11/16" minimum



#DV-1K0017

Sinks are individually handcrafted, so sizes may vary slightly.

**1 Year Warranty**

All DeerValley kitchen sinks come with our Warranty within one year.



TEL: (+1) 312-626-9466 | [service@deervalleybath.com](mailto:service@deervalleybath.com)