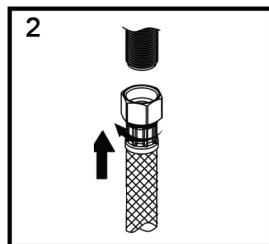
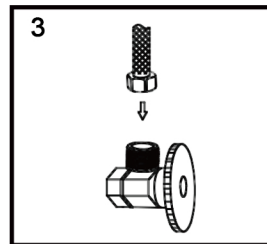


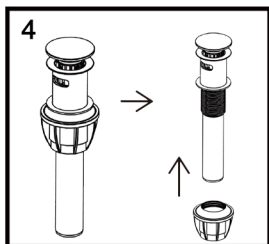
1. Place the faucet base plate to the bottom of the faucet. Run a thin bead of plumbers putty/silicone on the underside of the base plate. Insert the shanks of the faucet through the holes in the sink. From underneath the sink, thread the mounting nuts onto the shanks. Check the position of the faucet and tighten until the faucet is securely mounted. NOTE: It is helpful to have a second person hold the faucet in place while tightening the mounting nuts.



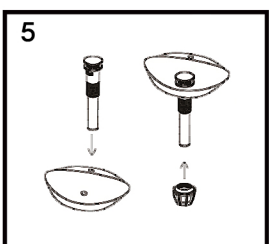
2. Attach one end of the flexible supply lines onto the shanks. Tighten the supply line connections using an adjustable or basin wrench. NOTE: Do not reuse existing supply lines.



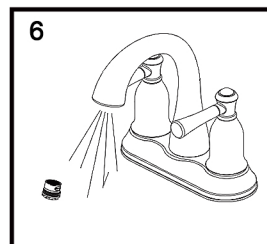
3. Attach the remaining ends of the water supply lines to the hot and cold shut-off valves and tighten with an adjustable wrench.



4. Install the push pop-up drain assembly: Turn the big nut clockwise to separate it from the drain body.

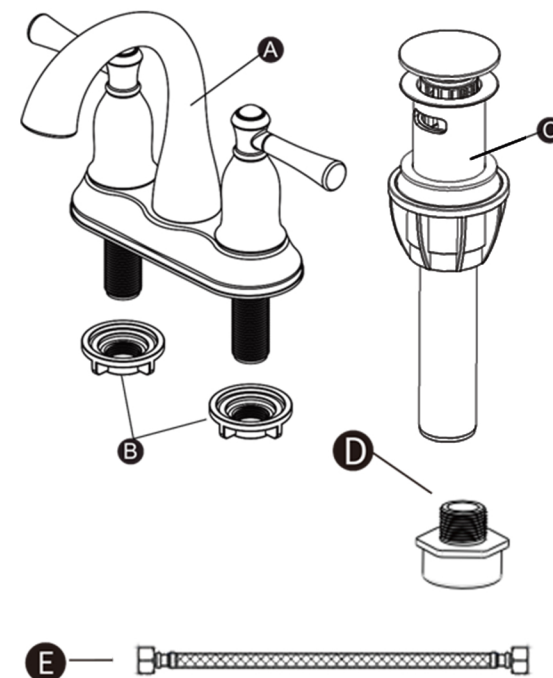


5. Apply a thin bead of putty/silicone onto the flange fig.4.1 insert the drain body into the sink slide the nut up and thread it counter clockwise on the drain body underneath the sink until it is firmly attached to the bottom of the flange Do not over tighten the nut.



6. Remove the aerator from the spout, turn on the shut off valves. Check for leaks on supply line connections. Close the pop up assembly and fill the sink with water to check the drain for leaks. Reattach the aerator.

Two Handle Lavatory Faucet



Part List

PART	DESCRIPTION	QUANTITY
A	Faucet body	1
B	Mounting nut	2
C	Pop-up drain assembly	1
D	Adapter	2
E	Water hose	2