

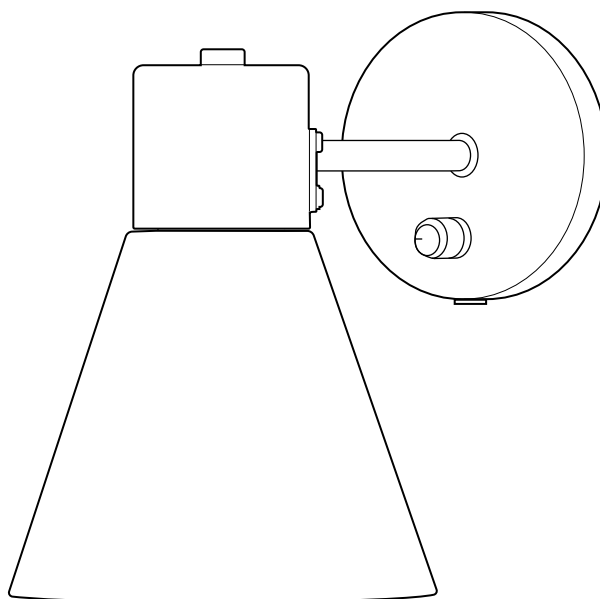
ITEM #5134302

WALL SCONCE

MODEL #WS60-1BNK

Español p. 13

ATTACH YOUR RECEIPT HERE



Purchase Date _____



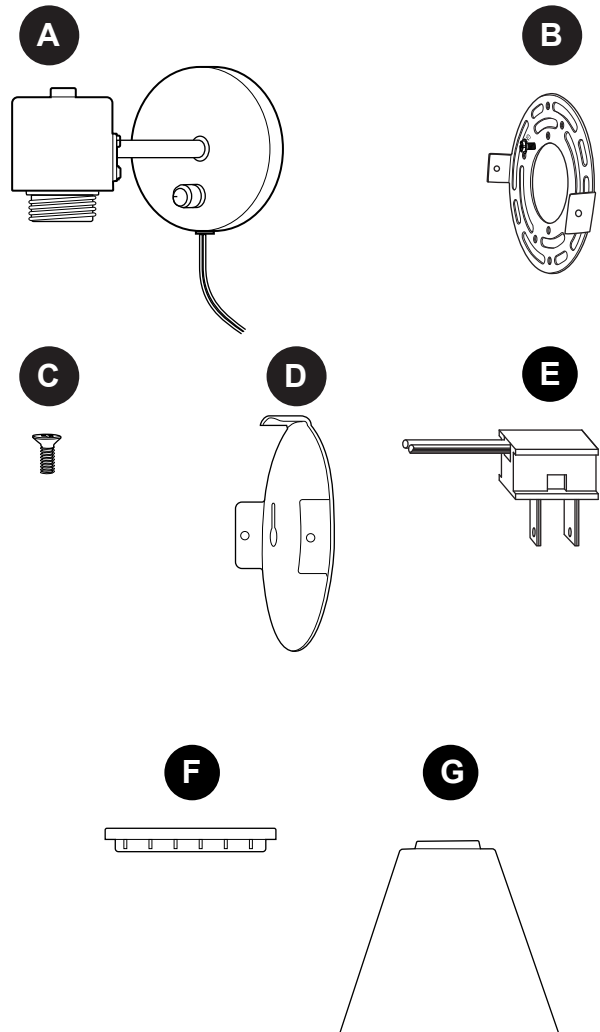
Questions, problems, missing parts? Before returning to your retailer, call our customer service department at **1-800-527-1292**, 8:30 a.m. - 5 p.m., CST, Monday - Friday.

TABLE OF CONTENTS

Package Contents	2
Hardware Contents	2
Safety Information	3
Preparation	4
Before Installation	4
Plug-In Installation	5
Hardwire Installation	8
Operating Instructions	11
Care and Maintenance	11
Troubleshooting.....	12
Warranty	12

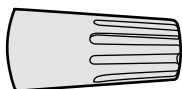
PACKAGE CONTENTS

PART	DESCRIPTION	QUANTITY
A	Fixture	1
B	Mounting Plate	1
C	Mounting Plate Screw (preassembled)	2
D	Back Plate (preassembled)	1
E	Power Plug (preassembled)	1
F	Socket Ring (preassembled)	1
G	Shade	1



HARDWARE CONTENTS (shown actual size)

AA



Wire
Connector

Qty. 3

BB



Machine
Screw

Qty. 2

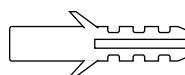
CC



Fixture
Screw

Qty. 2

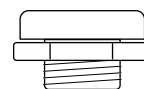
DD



Plastic
Anchor

Qty. 2

EE



Decorative
Screw with
Nut

Qty. 2



SAFETY INFORMATION

READ AND SAVE THESE INSTRUCTIONS.



DANGER

- For your protection and safety, carefully read and understand the information provided in this manual completely before attempting to assemble, install or operate this product. Failure to do so could lead to electrical shock, fire or other injuries that could be hazardous or even fatal. This portable product can be used as a fixed lighting fixture when installed in accordance with the instructions.
- This product has a polarized plug (one blade is wider than the other) as a safety feature to reduce the risk of electric shock. This plug will fit in a polarized outlet only one way. If it does not fit fully in the outlet, reverse the plug. If it still does not fit, contact a qualified electrician. NEVER use with an extension cord unless the plug can be fully inserted. DO NOT alter the plug.
- DO NOT connect this fixture to an electrical system that does not provide a means for equipment grounding. Never use a fixture in a two-wire system that is not grounded. Installing a fixture into an electrical system not having a proper grounding means could cause metal parts of the fixture to carry electrical currents if any of the fixture wires, wire connections or splices were to become broken, cut or loose during the mounting or normal operation of the fixture. Under this condition, anyone coming in contact with the fixture would be subject to electrical shock, which could cause serious injury or death.
- DO NOT connect the bare or green insulation fixture ground wire to the black (HOT) current-carrying wire or the white NEUTRAL house wire. Connection of the bare or green fixture ground wire to the black or white house wires may cause metal parts of the fixture to carry electrical currents. Under this condition anyone coming in contact with the fixture will receive electrical shock, which could cause serious injury or death.
- DO NOT damage or cut the wire insulation (covering) during installation of fixture. DO NOT permit wires to contact any surface having a sharp edge. To do so may damage or cut the wire insulation, which could cause serious injury or death from electrical shock.
- To reduce the risk of burns, fire, electric shock or injury to persons, DO NOT use the fixture if power supply cord is frayed or broken or plug is damaged, if the fixture is not working properly, if it has been dropped or damaged, or it has been submerged in water.
- To reduce the risk of electric shock, always unplug this fixture from the electrical outlet before cleaning.
- To reduce the risk of burns, fire, electric shock or injury to persons, unplug from outlet before attaching or removing parts.



SAFETY INFORMATION



WARNING

- All electrical connections must be in agreement with local codes and ordinances, the National Electric Code (NEC) and ANSI/NFPA 70-1999. Contact your municipal building department to learn about your local codes, permits and/or inspections. Risk of fire - most dwellings built before 1985 have supply wire rated for 140°F. Consult a qualified electrician before installation.
- To avoid personal injury, the use of gloves may be necessary while handling fixture parts with sharp edges.
- DO NOT suspend any fixture by the house wires. A fixture must always be mounted directly to an outlet box or to a mounting plate which is first attached to the outlet box. Wire connectors will not support the weight of a fixture. Suspending a fixture by the house wires and wire connectors will result in the fixture falling, with the possibility of personal injury and the danger of electrical shock or fire.
- To reduce the risk of fire, electrical shock or personal injury, wire connectors provided with this light fixture are designed to accept only one 12-gauge house wire and two lead wires from the light fixture. If your house wire is larger than 12-gauge or there is more than one house wire to connect to the corresponding fixture lead wires, consult an electrician for the proper size wire connectors to use.

CAUTION

- TURN OFF ELECTRICITY at main fuse box (or circuit breaker box) before beginning installation by removing the fuse (or switching the circuit breaker off).
- If you are not sure the lighting system has a grounding means, DO NOT attempt to install this fixture. Contact a qualified, licensed electrician for information regarding the proper grounding methods as required by the local electrical code in your area.
- All fixtures must be mounted to an outlet box that is supported by the building structure.
- DO NOT use bulbs having a wattage greater than the maximum value stated on the fixture. The use of bulbs with higher wattage than specified will increase temperatures and risk of fire.
- If a dimmer control switch is used with this fixture, obtain professional advice to determine the correct type to use as well as the electrical rating required.

PREPARATION

Before beginning assembly of product, make sure all parts are present. Compare parts with package contents list and hardware contents list. If any part is missing or damaged, do not attempt to assemble the product.

Estimated Assembly Time: 45 minutes

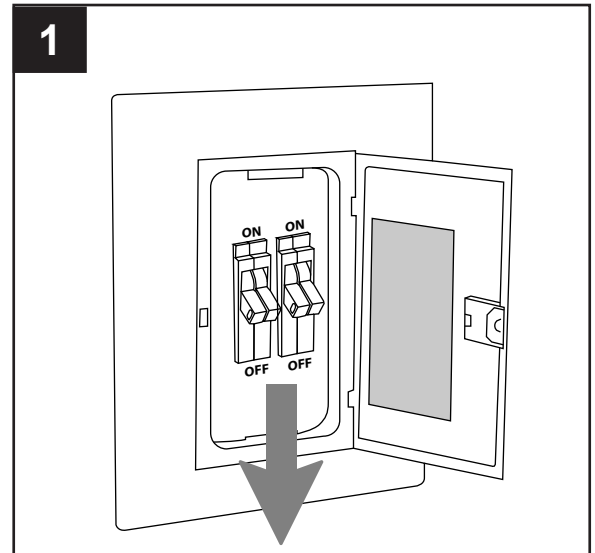
Tools Required for Assembly (not included): Flathead Screwdriver, Phillips Screwdriver, Wire Strippers, Pliers, Wire Cutters, Safety Glasses, Stepladder, Electrical Tape, Pencil, Drill, 1/4 in. Drill Bit

Helpful Tools (not included): A/C Tester Light, Do-It-Yourself Guide, Soft Cloth, Level

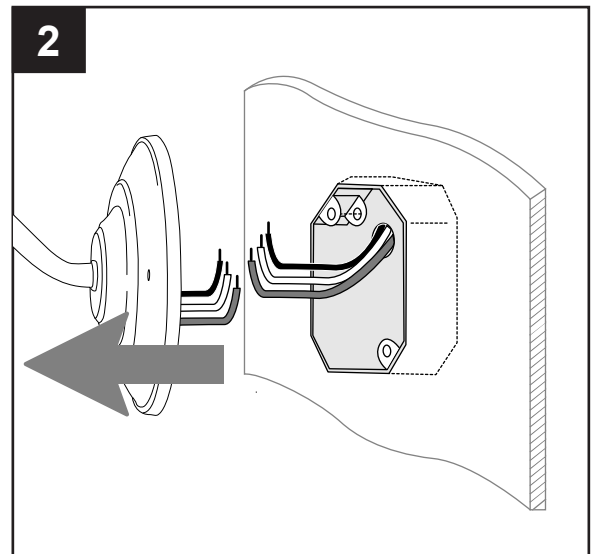
BEFORE INSTALLATION

1. Turn off circuit breakers and wall switch to the fixture supply line leads.

⚠ DANGER: Failure to disconnect power supply prior to installation may result in serious injury or death.



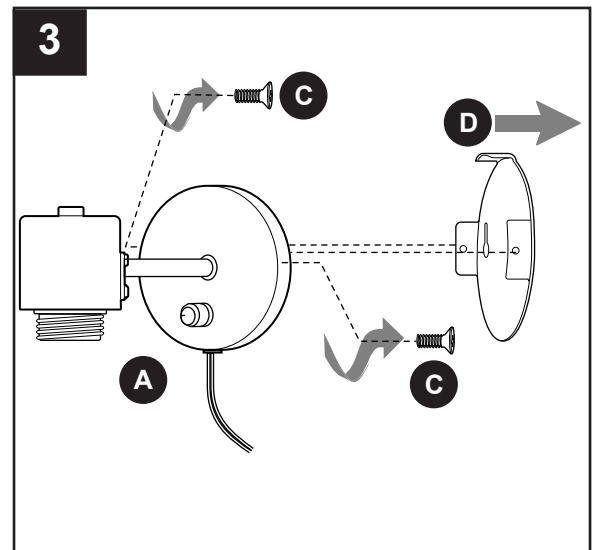
2. Remove existing fixture and disconnect all electrical wiring.



3. Remove back plate (D) from fixture (A) by removing mounting plate screws (C) from the edges of the fixture (A).

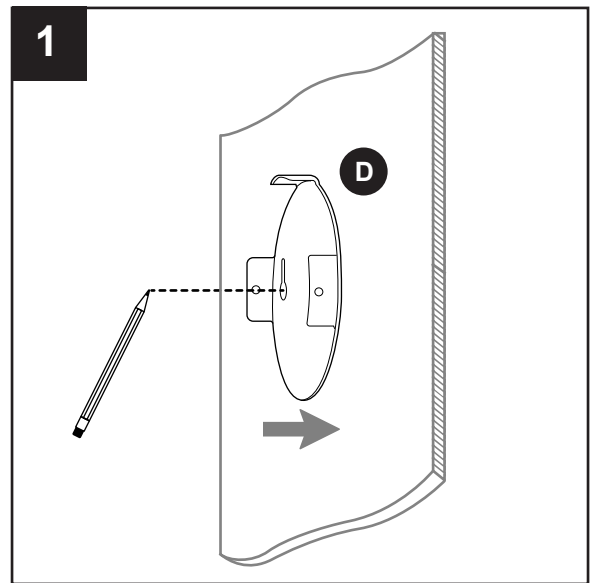
Proceed to one of the two installation options (Plug-In or Hardwire).

Save mounting plate screws (C) for later use.



PLUG-IN INSTALLATION



1. Determine the approximate location for the fixture (A). Place back plate (D) against the wall, and mark the location of the holes using a pencil or a marker (not included).

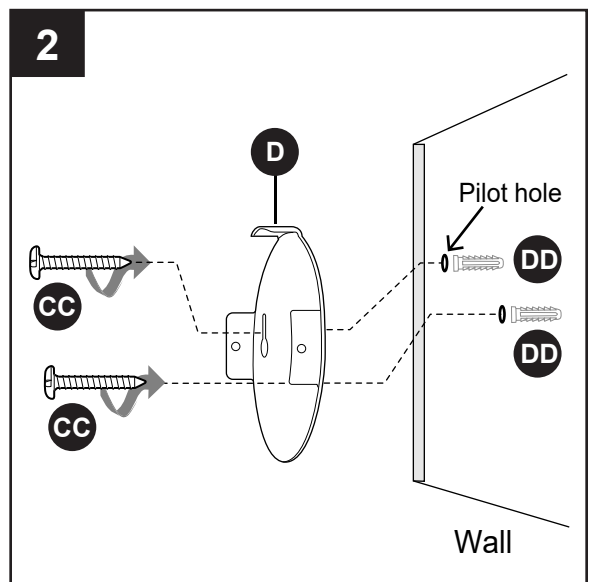


2. Use a 1/4 in. drill bit (not included) to drill two pilot holes at marked locations. Insert plastic anchor (DD) into each pilot hole. Gently tap plastic anchors (DD) with a hammer (not included) until flush with wall surface. Secure back plate (D) onto the wall by screwing fixture screws (CC) into plastic anchors (DD).

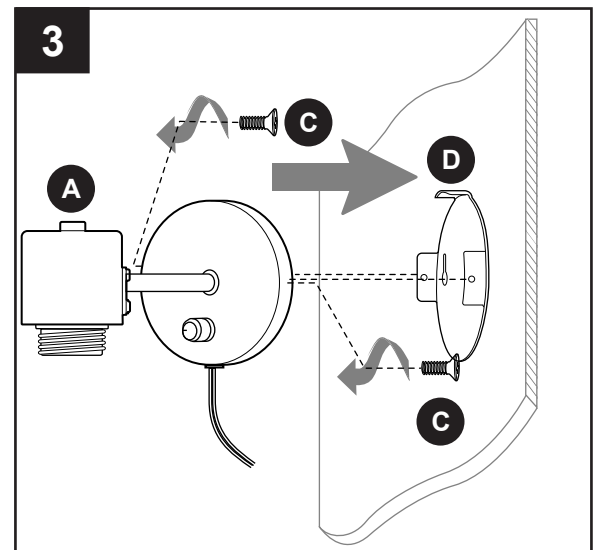
NOTE: Use of plastic anchors (DD) is optional for wood mounting surfaces.

Hardware Used

CC	Fixture Screw		x 2
DD	Plastic Anchor		x 2



3. Attach fixture (A) to back plate (D) using the mounting plate screws (C) previously removed (Step 3, Page 5).



PLUG-IN INSTALLATION

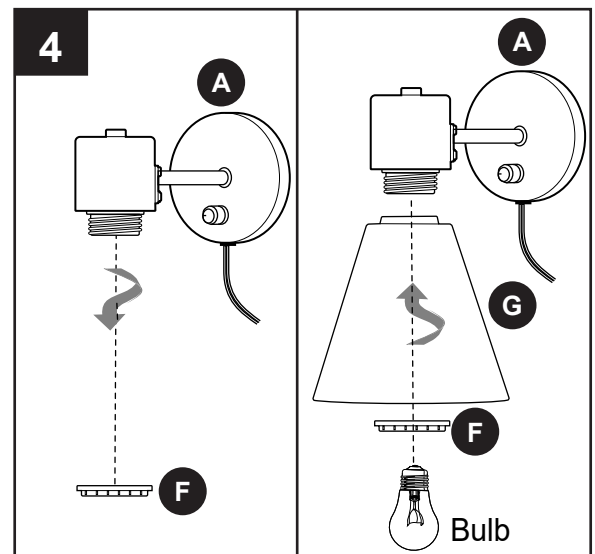
4. Remove socket ring (F) from socket of fixture (A). Attach shade (G) to socket, securing with socket ring (F).

Install one 60-watt max. standard-base bulb (not included) or CFL/LED equivalent.

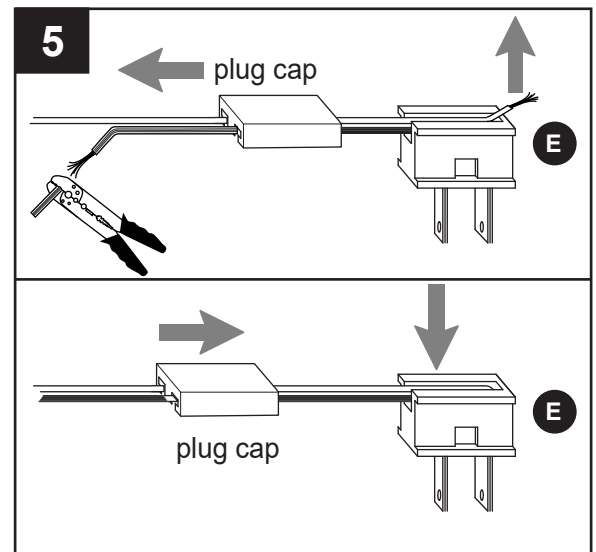
⚠ WARNING: When replacing bulb, allow bulb, shade and fixture to cool down before touching.

Restore power and test fixture (A).

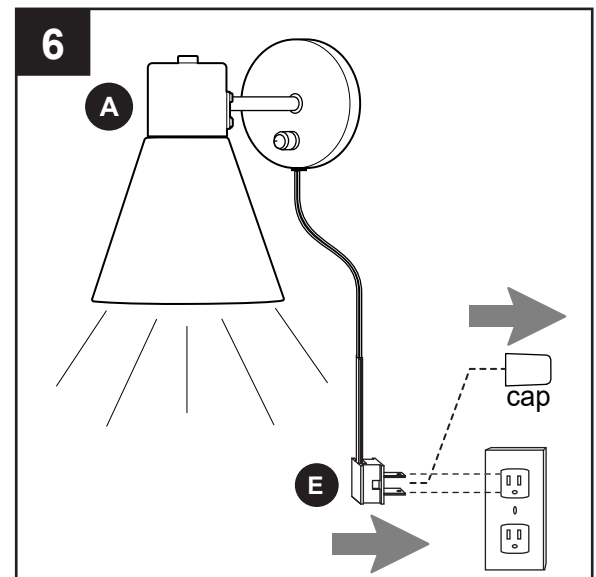
If lights do not function, please refer to TROUBLESHOOTING.



5. If you wish to change cord length, slide the plug cap off of the power plug (E). Cut the cord to desired length using wire cutters (not included). Re-attach cord to power plug (E) by inserting the cord back into the power plug (E). Press down firmly. Secure cord by sliding plug cap back onto the power plug (E).



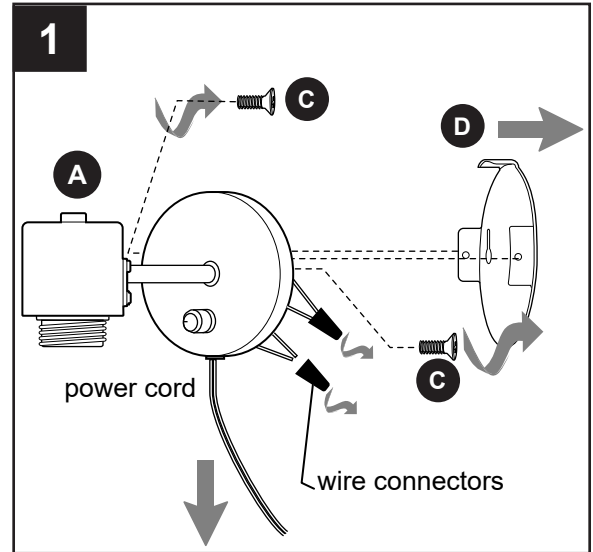
6. Remove preassembled cap from end of power plug (E). Insert power plug (E) into wall outlet.



HARDWIRE INSTALLATION

1. After removing the back plate (D), (Step 3, Page 5), cut the white zip tie holding the power cord and wires together. Then, remove the preassembled wire connectors to discharge the power cord.

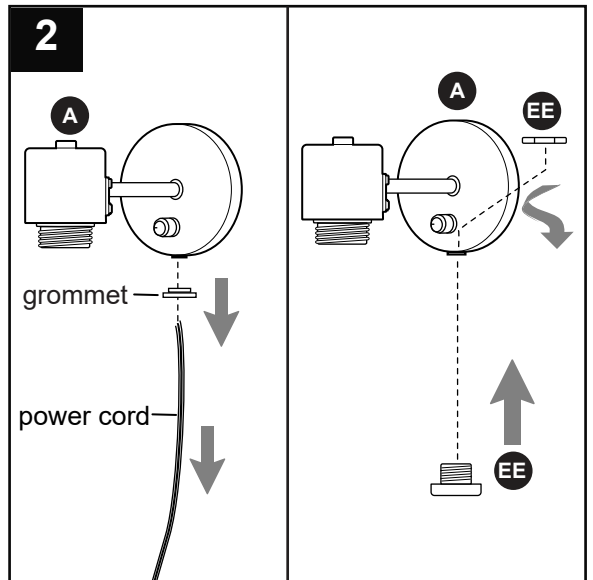
IMPORTANT: Do not remove the wire connector for the two connecting black wires.



2. Pull power cord out through hole at bottom of fixture (A). After removing the rubber grommet, place decorative screw (EE) firmly into same hole. Secure with preassembled nut (EE).

Hardware Used

EE Decorative Screw with Nut x 1

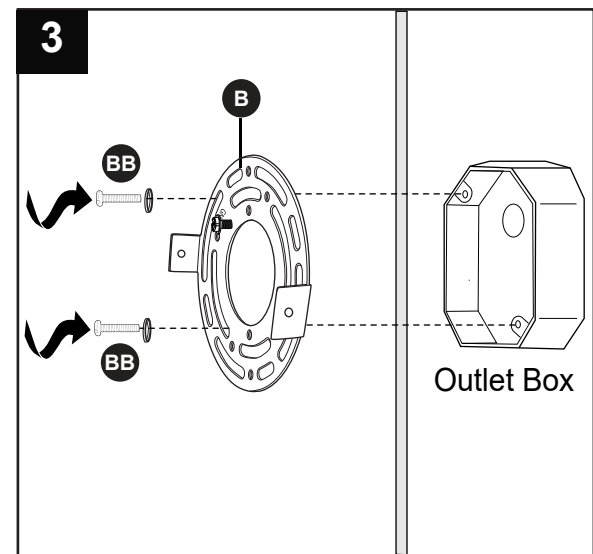


3. Attach mounting plate (B) to outlet box (not included) using existing washers and outlet box screws or the machine screws (BB). **NOTE:** If the outlet box screws required for your outlet box are of a different size than the machine screws (BB), consult a licensed electrician before proceeding. Tighten machine screws (BB) to secure mounting plate (B).

⚠ CAUTION: The fixture must be mounted to an outlet box that is supported by the building structure and can support the weight of the fixture. Plastic outlet boxes are not recommended.

Hardware Used

BB Machine Screw x 2



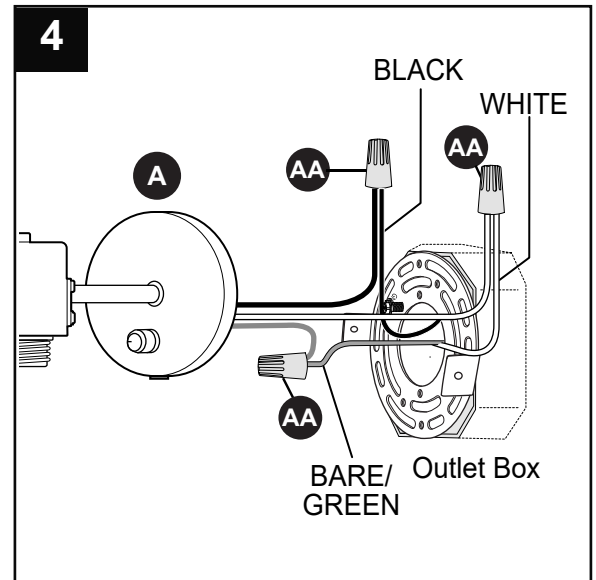
HARDWARE INSTALLATION

4. Prepare wires by stripping 3/4 in. of insulation from wire ends using wire strippers (not included). Connect WHITE wire from fixture (A) to WHITE wire from outlet box using existing wire connector or wire connector (AA). Connect the unwrapped BLACK wire from fixture (A) to BLACK wire from outlet box using existing wire connector or wire connector (AA). Connect BARE/GREEN ground wire from outlet box to BARE ground wire from fixture (A) with wire connector (AA).

NOTE: Screw wire connectors (AA) on in a clockwise direction.

⚠ WARNING: Never connect ground wire to WHITE or BLACK power supply wires.

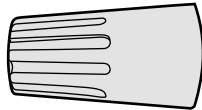
⚠ WARNING: To reduce the risk of fire, electrical shock or personal injury, wire connectors (AA) are designed to accept only one 12-gauge house wire and two lead wires from the light fixture. If your house wire is larger than 12-gauge or there is more than one house wire to connect to the corresponding fixture lead wires, consult an electrician for the proper size wire connectors to use.



Hardware Used

AA

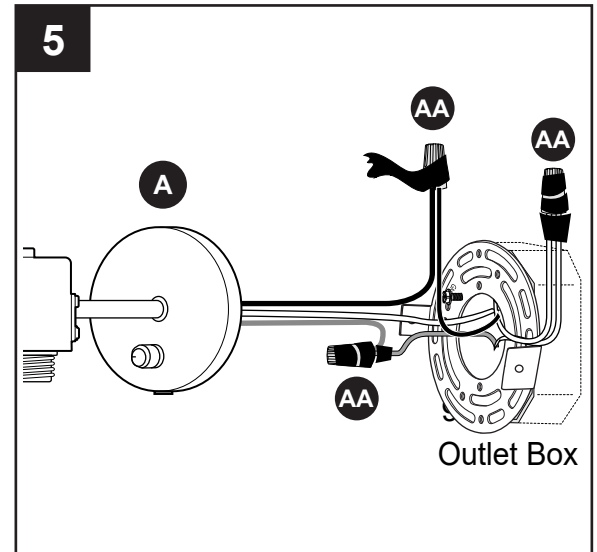
Wire Connector



x 3

5. Wrap electrical tape (not included) around each individual wire connector (AA) down to the wire. Push wire connectors (AA) gently back into outlet box. Carefully push excess wiring into outlet box.

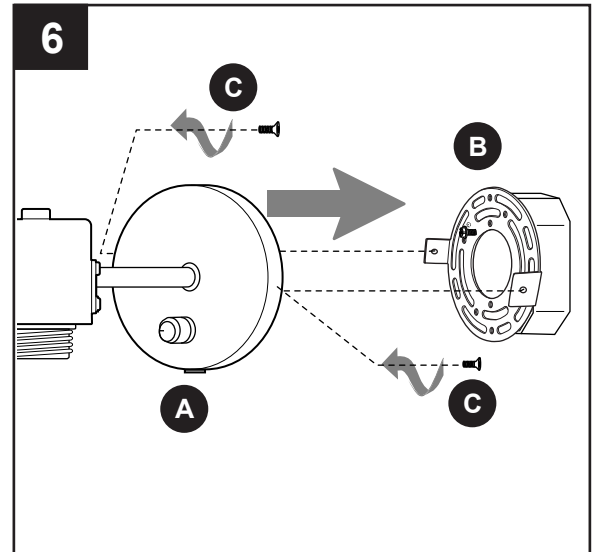
⚠ WARNING: Make sure no bare wire or wire strands are visible after making connections.



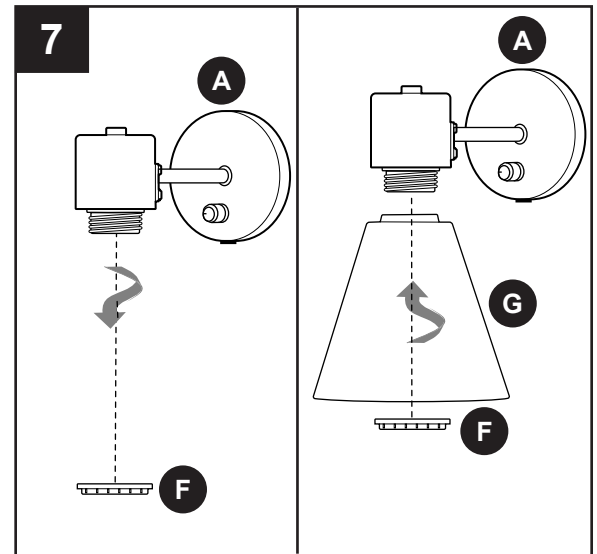
HARDWIRE INSTALLATION

6. Attach fixture (A) to mounting plate (B) using the mounting plate screws (C) previously removed (Step 3, Page 5).

NOTE: Fixture (A) can be installed with the socket facing either up or down.



7. Remove socket ring (F) from socket of fixture (A). Attach shade (G) to socket, securing with socket ring (F).

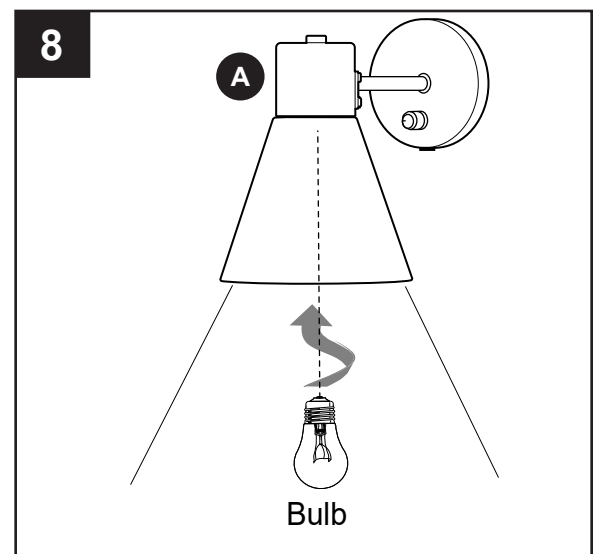


8. Install one 60-watt max. standard-base bulb (not included) or CFL/LED equivalent.

⚠ WARNING: When replacing bulb, allow bulb, shade and fixture to cool down before touching.

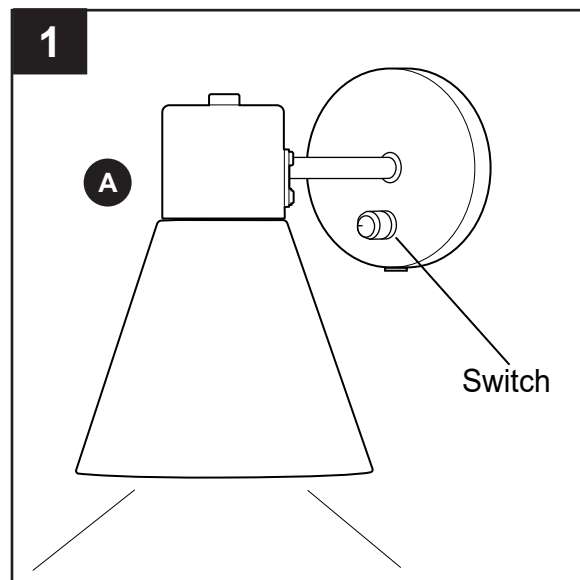
Restore power and test fixture (A).

If lights do not function, please refer to TROUBLESHOOTING.

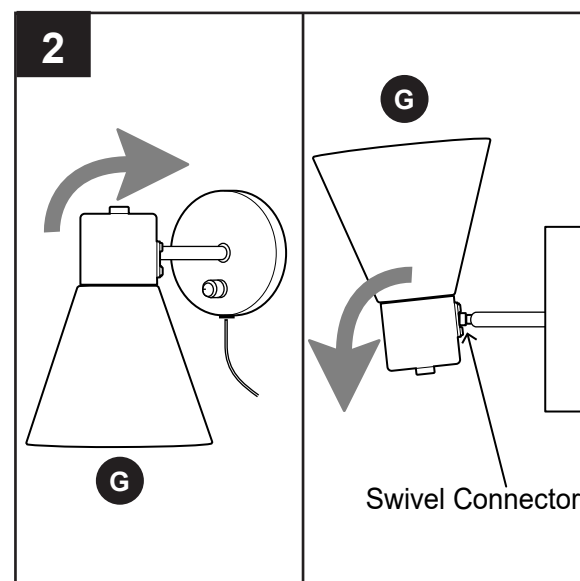


OPERATING INSTRUCTIONS

1. Use preassembled switch to turn fixture ON/OFF.



2. Use preassembled swivel connector to secure shade (G) in the desired position.



CARE AND MAINTENANCE

- Shut off main power supply. Wipe with soft cloth or use window cleaner. Do not use an abrasive cleaner.

TROUBLESHOOTING

⚠ WARNING: Before beginning work, shut off the power supply to avoid electrical shock.

PROBLEM	POSSIBLE CAUSE	CORRECTIVE ACTION
Bulb will not light.	1. Bulb is burned out. 2. Power is OFF. 3. Faulty connection. 4. Fixture not plugged in.	1. Replace light bulb. 2. Make sure power supply is ON. 3. Check wiring and all connections. 4. Plug fixture into outlet.
Fuse blows out or circuit breaker trips.	1. Crossed wires. 2. Power wire is grounding out.	1. Check wiring. 2. Check all connections.

WARRANTY

The distributor warrants all of its lighting fixtures against defects in materials and workmanship for one (1) year from the date of purchase. If within this period the product is found to be defective, take a copy of the bill of sale as a proof of purchase and the product in its original carton to the place of purchase. The distributor will, at its option, repair, replace or refund the purchase price to the consumer. All costs of installation and removal of the fixture is the responsibility of the consumer. This warranty does not cover fixtures becoming defective due to misuse, accidental damage or improper handling and/or installation and specifically excludes liability for direct, incidental or consequential damages. As some states do not allow exclusions of limitations on an implied warranty, the above exclusion and limitation may not apply. This warranty gives you specific rights and you may also have other rights which may vary from state to state.