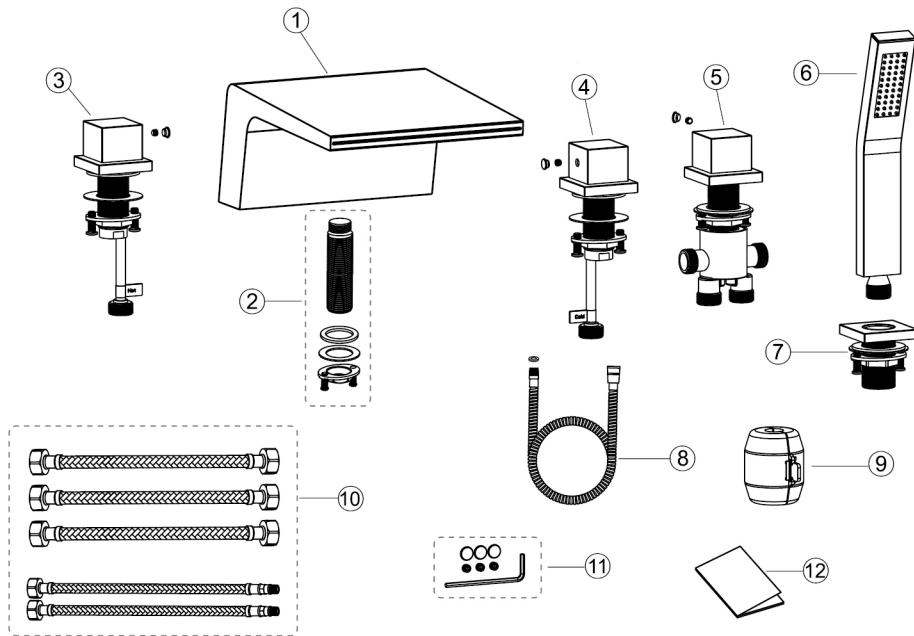


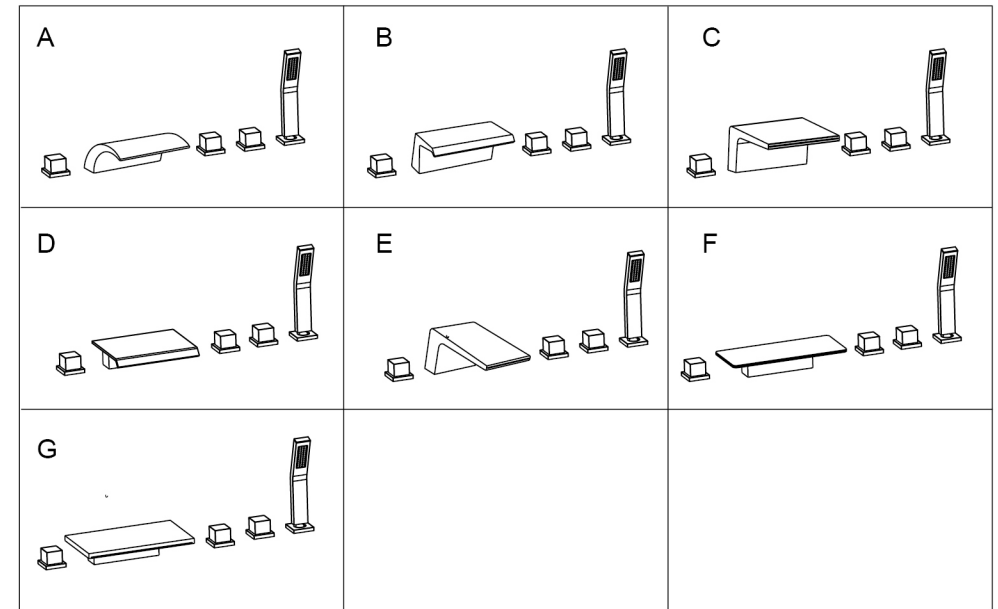
# INSTALLATION INSTRUCTIONS



## Parts list

NO	PART NAME	QTY	NO	PART NAME	QTY
①	Spout	1	②	Spout fixing parts	1
③	Hot Water Knob Parts	1	④	Cold Water Knob Parts	1
⑤	Diverter valve parts	1	⑥	Hand shower	1
⑦	Cover & connector parts	1	⑧	Shower hose	1
⑨	Gravity ball	1	⑩	Water supply hoses	5
⑪	Screws bag	1	⑫	Instructions	1

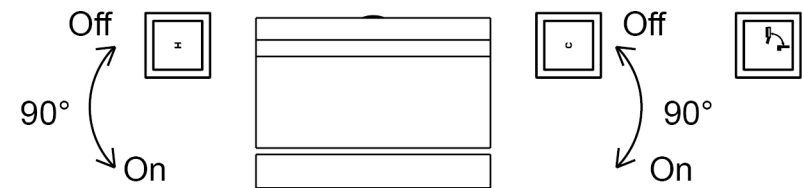
## Faucet model



## Instructions For Use

1. Turn left knob counterclockwise to turn on hot water. The greater the knob angle, the greater the water flow; Conversely, the smaller the knob angle, the smaller the water flow, until it is closed.

2. Turn right knob clockwise to turn on cold water. The greater the knob angle, the greater the water flow; Conversely, the smaller the knob angle, the smaller the water flow, until it is closed.



Recommended opening  
holes size: (unit: mm/inch)

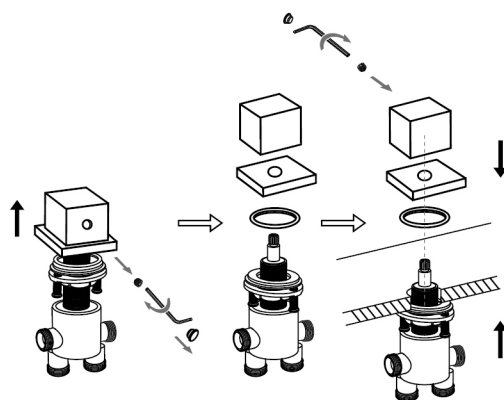
	Ø30-35 (1.18"-1.38")	Ø22-26 (0.87"-1.02")	Ø30-35 (1.18"-1.38")	Ø30-35 (1.18"-1.38")	Ø30-35 (1.18"-1.38")
A-D Style:	≥170(6.69")	≥170(6.69")	≥100(3.94")	≥100(3.94")	≥100(3.94")
E Style:	≥130(5.12")	≥130(5.12")	≥100(3.94")	≥100(3.94")	≥100(3.94")
F-G Style:	≥210(8.27")	≥210(8.27")	≥100(3.94")	≥100(3.94")	≥100(3.94")
	hot water knob hole	spout hole	cold water knob hole	diverter knob hole	hand shower hole

1. Drill holes as recommended opening holes size (Note: holes distance should as picture shows).

2. Unscrew washers and locking nut from thread connector of hot & cold water knobs; Screw hot & cold water supply hoses to the hot & cold water knob holes and hand tighten them.

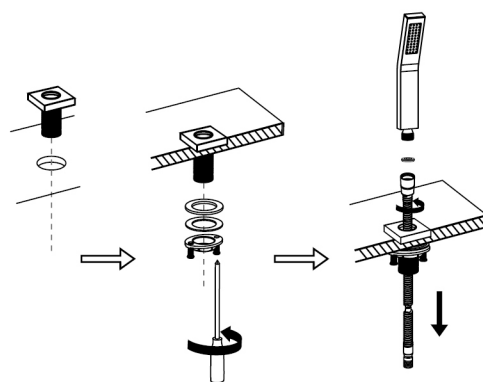
Place hot and cold water knob parts into holes; Rescrew washers and locking nut to thread connector until can not move, then tighten the screws on the locking nut with cross screwdriver.

3. Screw spout fixing parts to spout, unscrew the washers and the fixing nut, place spout to bathtub hole, reinstall washers and fixing nut then hand tighten them.

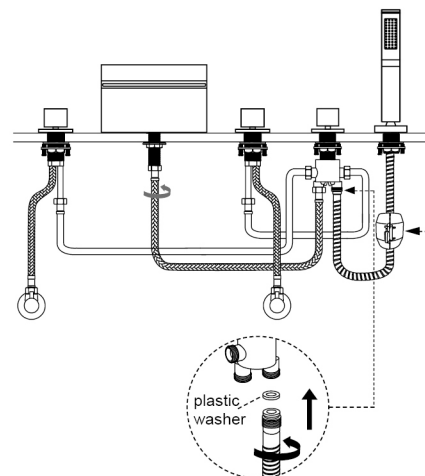


4. Use allen key to loose the screw in knob then disconnect knob & cover, rubber washer, diverter valve part as picture shows.

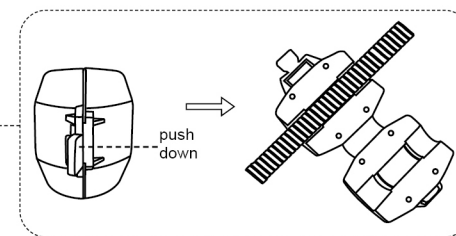
Pass the diverter valve part through bathtub hole as picture shows, reinstall the rubber washer, knob & cover then tighten the diverter fixing parts and the screw in the knob.



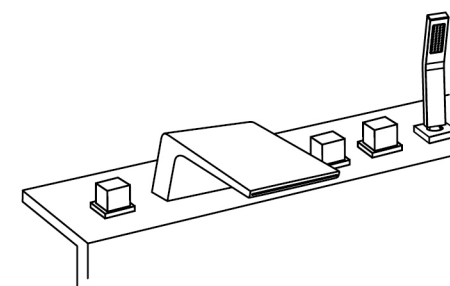
5. Unscrew the washers and fixing nut from cover & connector, place cover & connector to bathtub hole, reinstall the washers and fixing nut; connect hand shower and shower hose then place the shower hose to the bathtub hole as picture show.



6. Connect the red & blue hose to the hot and cold angle valves, connect the long hose to the hole on the side of diverter valve part, connect the short hose to the spout and the left hole of the diverter valve part, put the plastic washer on the connector of shower hose then screw it to the right hole of diverter valve part.



7. Open the gravity ball, clamp the shower hose, then close the gravity ball.



8. Turn on water, check for leakage, retighten the hoses if necessary.