

# Installation Procedure

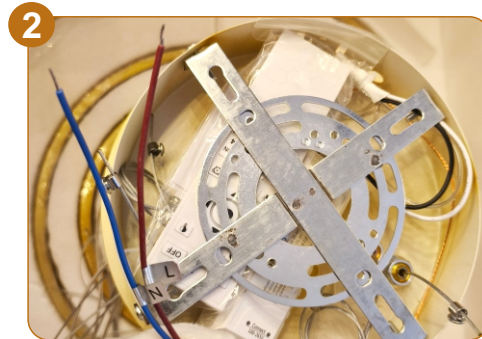
Thank you for choosing our lighting product. To ensure safe use, please take a moment to carefully read these instructions. We also recommend keeping this manual for future reference.

**Important Safety Information:** 1. Before performing installation or maintenance, ensure the power supply is disconnected. Do not open the enclosure in an explosive atmosphere. Before turning the power on, confirm that the light source and electrical installation are correctly connected.

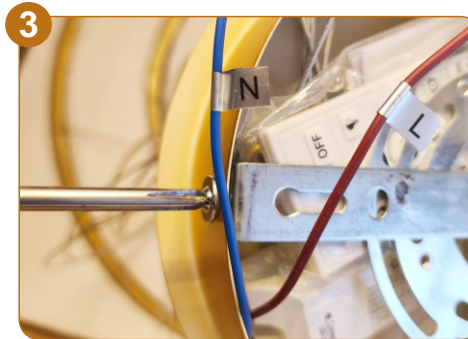
2. Please bring your own installation tools: wrench, screwdriver, ladder.



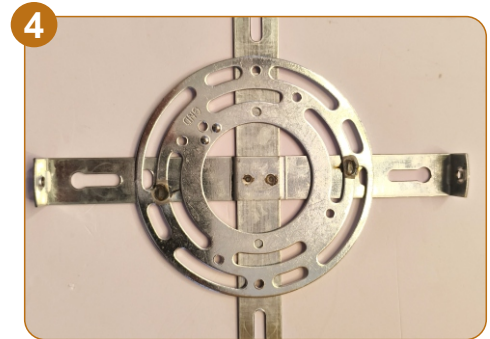
Open the packaging of the lighting fixture.



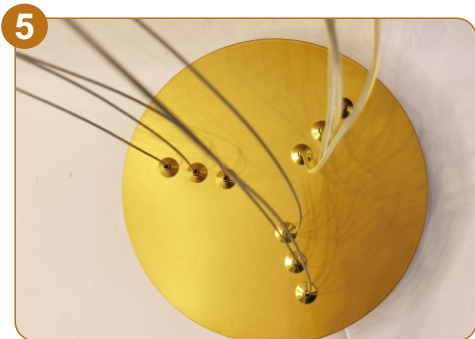
Open the packaging bag, connect the power supply, and test whether the lamp is functioning properly by checking if it is emitting light normally. (If it fails to light up, remove the remote control, press the switch, and then test again to see if the lamp is lighting up.)



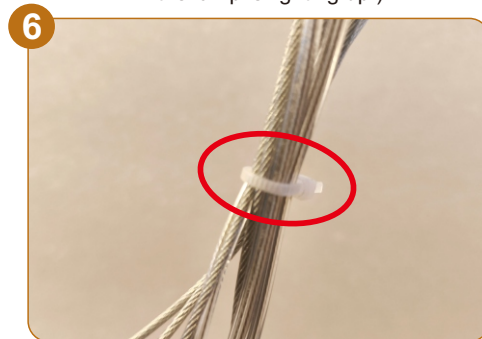
Unscrew the screws between the hanging plate and the ceiling panel, then remove the hanging plate and the remote control.



Install the hanging board onto the ceiling.



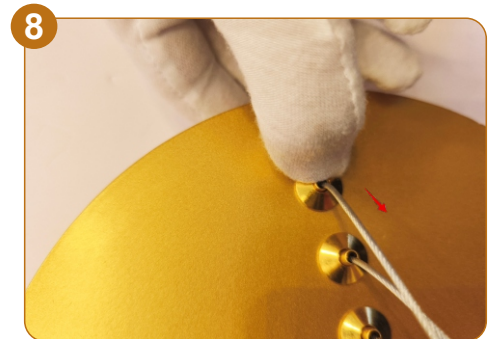
After connecting the power supply, lock the ceiling plate onto the hanging board.



Cut off all the straps on the steel wire rope (make sure to cut them after hanging up the lamp).



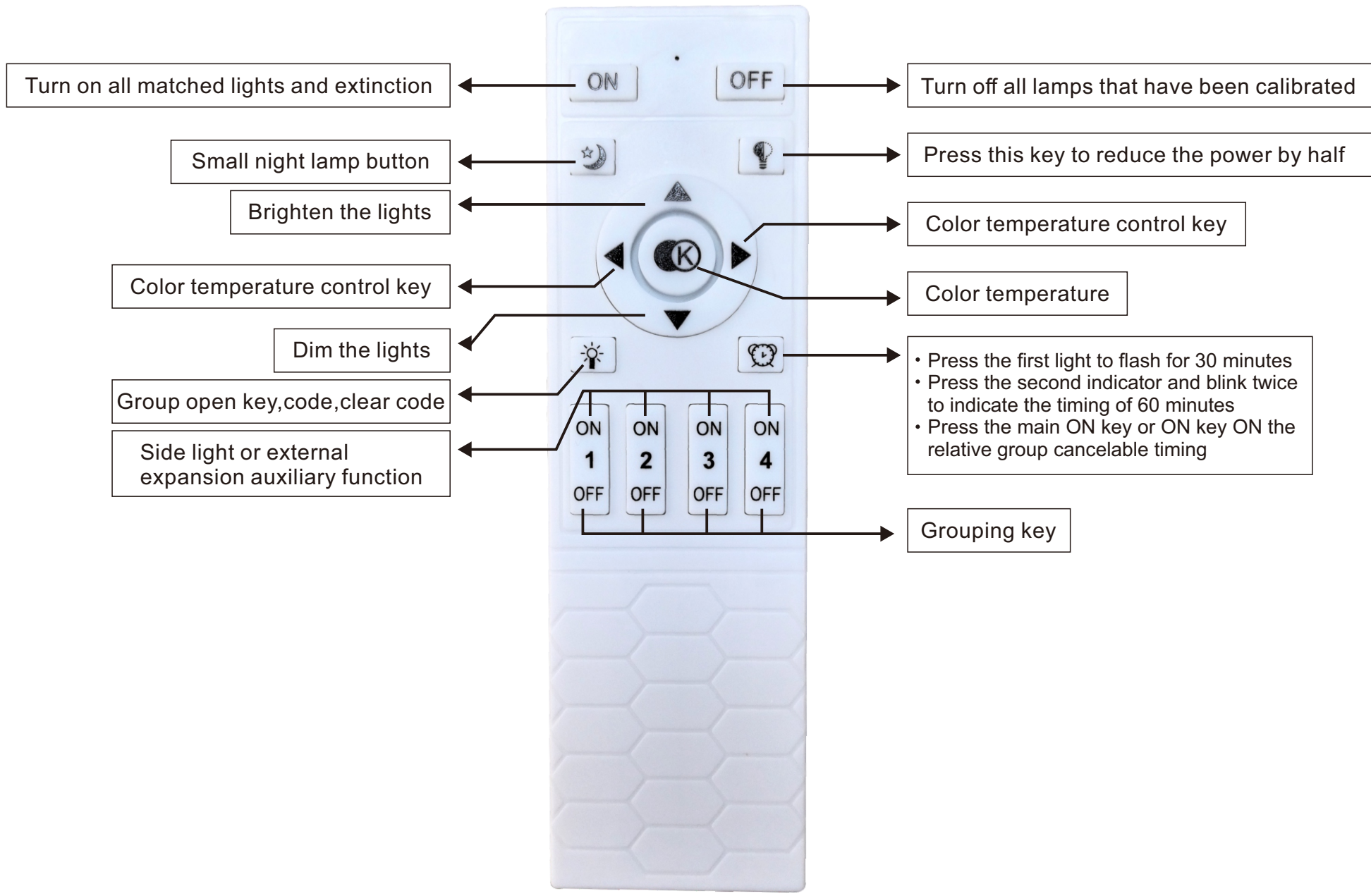
Push the steel wire rope upwards, and the length of the steel wire rope will be shortened.



After pressing down the fixed clip, pull the steel wire rope downward, and the length of the steel wire rope can be extended.



Installation Completed Diagram.



Turn on all matched lights and extinction

ON

OFF

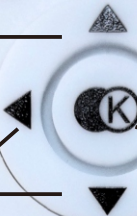
Turn off all lamps that have been calibrated

Small night lamp button



Press this key to reduce the power by half

Brighten the lights



Color temperature control key

Color temperature control key

Color temperature

Dim the lights



- Press the first light to flash for 30 minutes
- Press the second indicator and blink twice to indicate the timing of 60 minutes
- Press the main ON key or ON key ON the relative group cancelable timing

Group open key,code,clear code

Side light or external expansion auxiliary function

ON	ON	ON	ON
1	2	3	4
OFF	OFF	OFF	OFF

Grouping key