

## SPECIFICATIONS & INCLUDED CONTENTS

### Battery Information:

Product includes one 3.7V-280 mAh battery, installed inside product. It is replaceable.

### Controller Battery Information:

Required 3 AAA (1.5V) batteries.  
They are replaceable and not included.

### Operational Information:

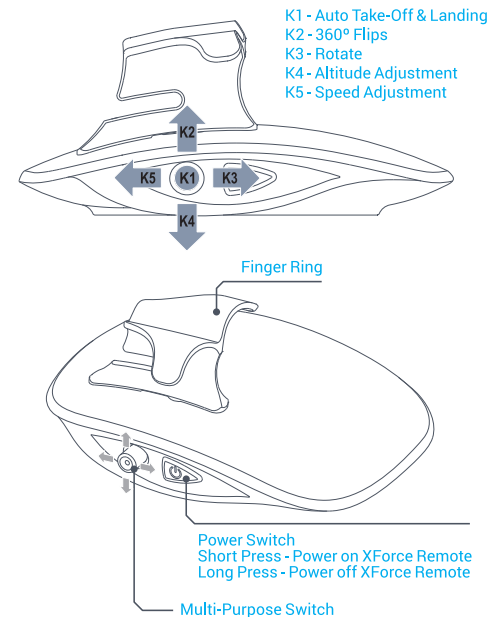
Charging Time: 30 minutes  
Flying Time: 10 minutes

**Remote-to-Drone Transmission Distance:**  
60 feet

### Contents Included:

- 1 x X-Force Quadcopter Drone
- 1 x X-Force Motion Remote
- 1 x USB Charging Cable
- 1 x Replacement Finger Ring
- 4 x Replacement Propellers
- 1 x Instruction Manual

## How to Use the Motion Control



## FLIGHT PREPARATION

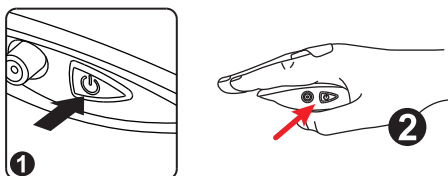
### First Thing's First – Charge Up!

1. Charge the battery included in the accessory bag for 30 minutes for optimal use. Take the white end piece attached to the battery's wire and snap into the other white end piece on the included USB charging cable.
2. After you've charged the battery, disconnect from the charging cable and connect the battery end piece to the other end piece that is located inside the X-Force Drone. It should snap in to ensure a correct connection. Tuck the battery back in to the bottom of the drone so it is not hanging loose during flight.
3. Place your X-Force Drone on flat ground – make sure the BLUE lights are facing forward and the RED lights are facing backward and closest to your feet.
4. Ensure you have installed 3 AAA batteries in your X-Force Hand Motion Remote.
5. On the side of your X-Force Hand Motion Remote Control, press the transparent ON/OFF button. A red LED light should flash on the side of the remote. (Diagram 2) Please note, if there is no LED light, that means the remote needs new batteries.

## FLIGHT PREPARATION

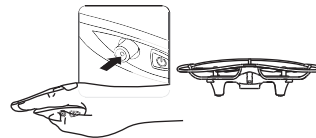
Continued

6. If this is your first time connecting the remote to your drone, LONG PRESS the transparent ON/OFF button (3-5 seconds). Your XForce drone's lights should start flashing. After this, SHORT PRESS the transparent ON/OFF button (one click) to fully connect the remote to your drone. (Diagram 1) The drone's lights should stop flashing and stay solid. Now your remote is connected and you are ready for take-off!
7. To turn off your XForce Hand Motion Remote – LONG PRESS (3-5 seconds) the transparent ON/OFF button. The red LED light will stop flashing.

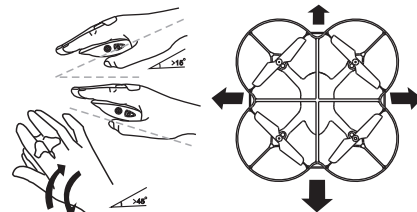


## OPERATION & CONTROL

1. Slide your index and middle finger into the finger rings attached to your XForce Motion Remote. Make sure you're holding the remote securely in the palm of your hand.
2. Using the multipurpose blue switch on the side of your XForce Motion Remote, press in towards the center of the remote (Position K1) – the XForce drone will automatically take off and reach a certain height for hovering.



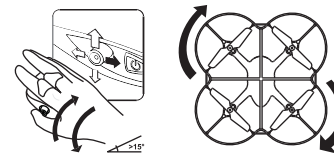
3. Slowly tilt your hand forward, backward, to the left and to the right to control the direction your XForce drone flies in.



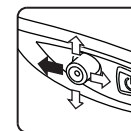
## OPERATION & CONTROL

Continued

4. Shift and hold the multipurpose blue switch backward (Position K3) and move your hand left or right to actually rotate the X-Force Drone.



5. Flick the multipurpose blue switch forward (Position K1) to adjust speed. Flick once to increase to MEDIUM speed, flick a second time to increase to HIGH speed, and flick a third time to go back to the LOWEST speed.

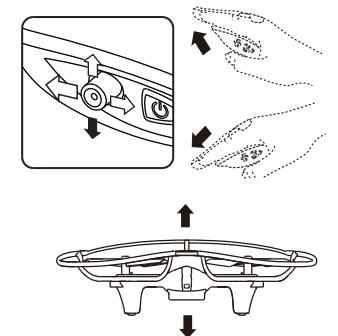


6. Shift and hold the multipurpose blue switch down (K4 Position) to adjust the flying height. At the same time, tilt your wrist upward or downward slowly and the X-Force drone will adjust its altitude accordingly. Release the K4 position once you find a comfortable height to keep the X-Force drone hovering at the desired altitude.

## OPERATION & CONTROL

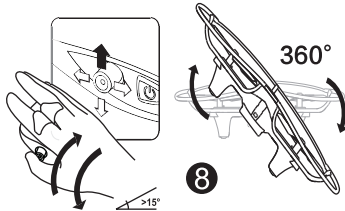
Continued

7. Auto-Land Feature – press the multipurpose blue switch inward (Position K1) toward the center of your remote (same as Take-Off).
8. If flight needs to immediately end due to any emergency, simply press the transparent ON/OFF button on the side of your X-Force motion remote to turn off the connection between the remote and the drone.



## 360° STUNT CONTROL

1. Make sure your X-Force drone is about 6 feet high in the air and your drone's battery is fully charged before using the Stunt feature.
2. Once the X-Force drone is hovering in a stable environment, shift and hold the multipurpose blue switch UPWARD (Position K2) and tilt your hand in the direction you want the drone to flip.



### WARNING

Changes or modifications to this unit that are not approved by the party responsible for compliance could prohibit the user's authority to operate. Do not disassemble the remote control or flight units.

## BATTERY CHARGING

### XForce Quad Drone Battery

1. To charge your X-Force drone's battery, connect the white end piece to the included USB charging cable's white end piece. They will snap in to ensure correct connection.
2. Plug the USB charging cable in to your computer or a USB Port adaptor that can charge from an outlet in your home. While charging, the USB will light up RED. Once there is a full charge, the red light will turn OFF. It is at this time that you can disconnect the charging cable from your drone's battery.
3. **CAUTION** – If charging from a computer, please make sure you disconnect the USB before shutting down your computer.
4. Recharge the drone's battery as needed by following the same steps.

## BATTERY INSTALL

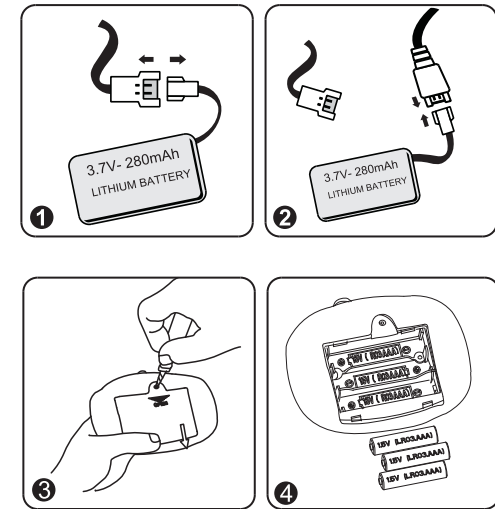
### XForce Motion Remote Control

1. Use a small screwdriver and push the battery cover away from you to remove it from the remote.
2. Install 3 AAA batteries carefully and correctly. Be sure to match the battery polarity markings (+/-) as noted on the inside of the remote control.
3. Slide the battery cover back on the remote
4. Remove and replace batteries as needed following the same steps.

**Please refer to the diagrams to the right for any reference.**

## BATTERY CHARGING & INSTALLATION

### Reference Diagrams



### IMPORTANT SAFETY PRECAUTIONS

**NOTE:** The flying unit contains a Lithium Polymer Battery which is built into the quadcopter. Do not disassemble the flying unit as this may result in permanent damage or hazardous operation.

- DO NOT modify this product in any way.
- DO NOT launch at people or animals.
- DO NOT use near overhead cables, vents, fans, or any other obstacles.
- Keep Propellers away from eyes, faces, hands, hair and loose clothing.
- Make sure people are you are aware you are playing with the quadcopter.
- If the quadcopter gets stuck in a high place, ask an adult to retrieve it for you – do NOT attempt to retrieve it yourself.
- Before recharging, always allow your quadcopter to deplete its previous charge (allow the propellers to spin freely until it stops) and switch OFF when not in use.
- Only use the charge provided in this pack to charge the quadcopter under adult supervision.

**ADULT SUPERVISION RECOMMENDED AT ALL TIMES!**

### IMPORTANT BATTERY INFORMATION

- DO NOT MIX old and new batteries.
- DO NOT try to charge non-rechargeable batteries.
- DO NOT dispose of batteries in fire.
- DO NOT short circuit the supply terminals.
- DO NOT use near water.
- Ensure that the contact surfaces are clean before installing new batteries.
- Batteries should always be replaced by adults.
- Replace batteries of the same type and brand at the same time.
- 1 pc Lithium Battery included
- Please retain packaging for further reference.

### MAINTENANCE NOTICE

- Please check the plug, the socket, the shell and other parts of the product for damage regularly. You should not use until it is repaired.
- Your area of operation should be a local field and legal for remote control flying.
- This is an indoor AND outdoor product.
- Please keep far away from direct sunlight and/or heat. The quadcopter contains electrical parts.
- Please keep far away from water or wet environment.
- Please use dry clean cloth to clean product if it gets dirty; do not wash it.

## TROUBLESHOOTING

**Problem:** LED Indicator Flashes but no response

**Reason A:** Matching code is not successfully made

**Try Solution:** Re-match controller code to quadcopter.

**Reason B:** Insufficient power to hand remote and quadcopter.

**Try Solution:** Replace the battery of the controller or charge the quadcopter's battery.

**Problem:** The Propellers spin but the quadcopter does not fly up.

**Reason A:** Propeller Deformed

**Trouble Shooting:** Replace propeller with included replacement parts.

**Try Solution:** Insufficient power to quadcopter.

**Trouble Shooting:** Charge quadcopter's battery.

**Problem:** Quadcopter flies out of control after a crash.

**Reason A:** Loss of balance after crash.

**Try Solution:** Re-Start quadcopter – wait 30 seconds and try again.

## FCC NOTICE

This equipment has been tested and found to comply with the limits for a Class B digital device, pursuant to Part 15 of the FCC Rules. These limits are designed to provide reasonable protection against harmful interference in a residential installation. This equipment generates, uses and can radiate radio frequency energy and, if not installed and used in accordance with the instructions, may cause harmful interference to radio communications. However, there is no guarantee that interference will not occur in a particular installation. If this equipment does cause harmful interference to radio or television reception, which can be determined by turning the equipment off and on, the user is encouraged to try to correct the interference by one or more of the following measures: Reorient or relocate the receiving antenna. Increase the separation between the equipment and receiver. Connect the equipment into an outlet on a circuit different from that to which the receiver is connected. Consult the dealer or an experienced radio/TV technician for help.

This device complies with Part 15 of the FCC Rules. Operation is subject to the following two conditions: (1) this device may not cause harmful interference, and (2) this device must accept any interference received, including interference that may cause undesired operation

If you run into any technical difficulties while operating your new XForce Motion Control Quadcopter Drone, please contact our support team by email or at our Blue Sky Wireless Customer Support line from 9 AM to 5 PM EST. Support@BlueSkyW.com • Tel. 954.866.8048  
Boca Raton, FL 33432 • USA

