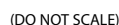




This diagram shows the exploded view of the shower head assembly. It includes the shower head, the diverter valve, and the shower arm. The shower head is shown at the top, the diverter valve in the middle, and the shower arm at the bottom. The diverter valve has a lever that can be moved to the left or right to direct water flow.

**Valves:** 63100, 3500 Series



**www.moen.com**

## DESCRIPTION

- Brass construction
- Pressure balancing, four port valve design with volume control and integral checks, 1/2" CC or IPS connections

## OPERATION

- Adjustable temperature limit stop to control maximum hot water temperature
- Pressure balancing mechanism maintain selected discharge temperature to  $\pm 2^{\circ}\text{F}$

## CARTRIDGE

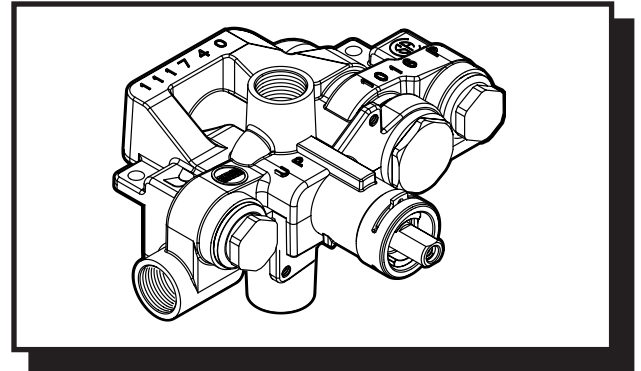
- 1225 cartridge design
- Nonmetallic/nonferrous and stainless steel materials
- Accommodates back to back installations

## STANDARDS

- Third party certified by CSA to meet CSA B-125, ASME A112.18.1M and all applicable requirements referenced therein and complies with the applicable requirements of ANSI A117.1

## WARRANTY

- Lifetime limited warranty against leaks, drips and finish defects to the original consumer purchaser
- 5 year warranty if used in commercial installations

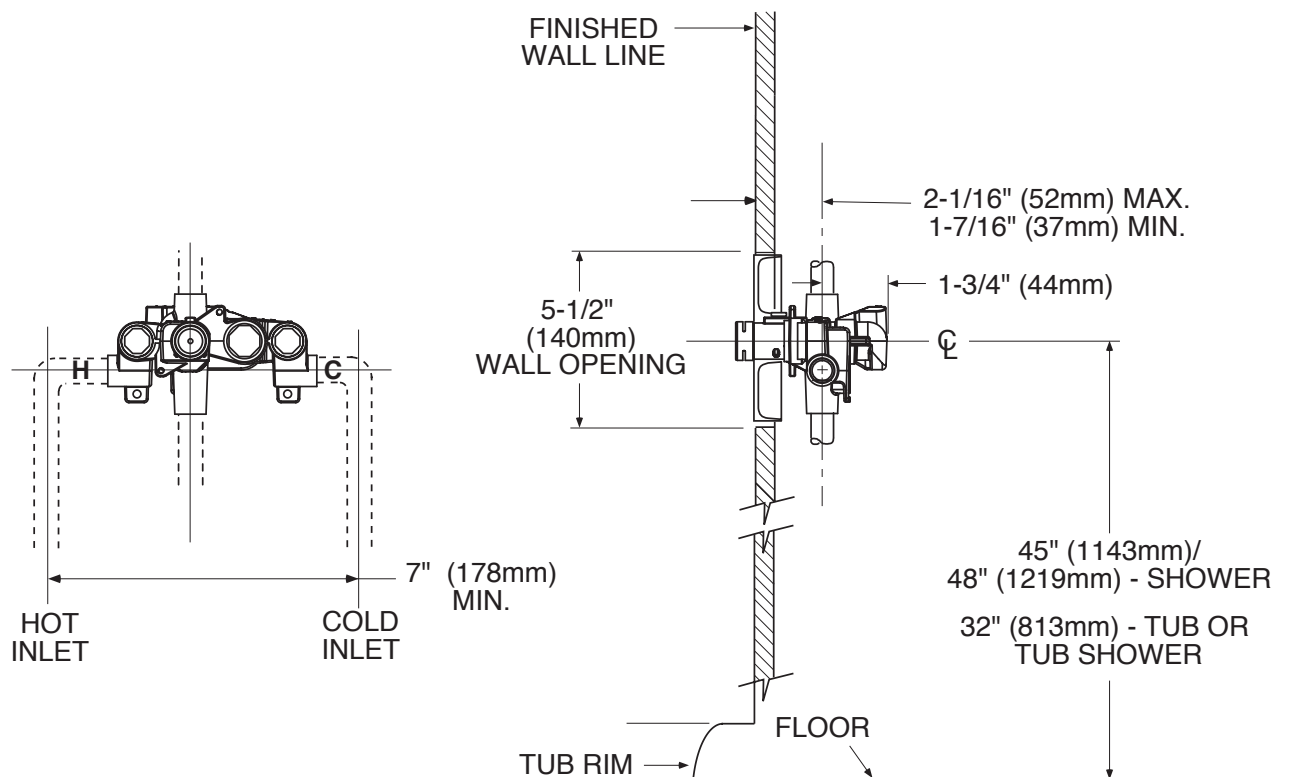


## MOENTROL® VALVE

Pressure-Balancing Valve with Volume Control

**Models: 3510 (IPS), 3520 (CC) - Single Pack**  
**63110 (IPS), 63120 (CC) - Bulk Packed**  
**(Bulk packed 12 per carton)**

**NOTE: See reverse side for illustrated parts**



## CRITICAL DIMENSIONS

(DO NOT SCALE)