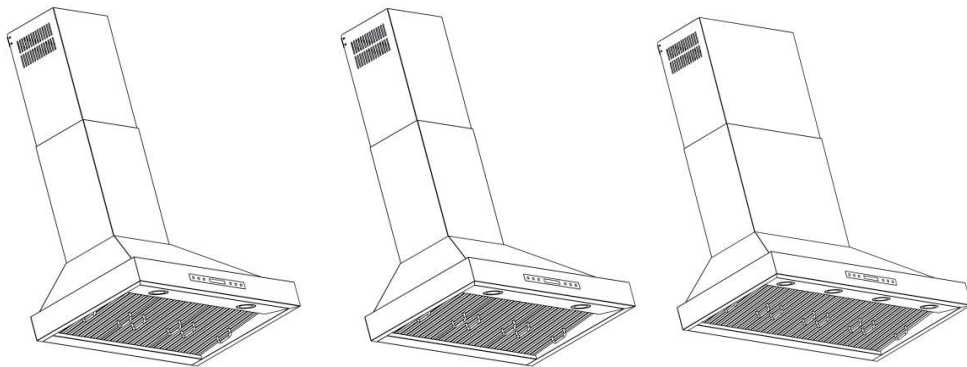


# INSTALLATION MANUAL

## RANGE HOOD

### RH09M MODELS

KOS-30RH09M | KOS-36RH09M | KOS-48RH09M



# KOSTCH

# TABLE OF CONTENTS

- RANGE HOOD INSTALLATION..... 1
  - INSTALLATION NOTES..... 2
    - Step 1- Mark the installation reference lines..... 2
    - Step 2 - Install the Wall Mounting Bracket on the hood..... 3
    - Step 3 - Mount the Range Hood to the Wall..... 3
    - Step 4 – Install the Exhaust Outlet to the Hood..... 3
    - Step 5 – Connect the Aluminum Foil Duct ..... 3
    - Step 6 – Install the Two-Piece Chimney Covers ..... 4
    - Step 7 – Final Check ..... 5
    - Step 8 – Install the Oil Cup and Grease Tray ..... 5
    - Step 9 – Install the Filters ..... 5
    - Safety Reminder ..... 6
    - Ducting Installation Notes ..... 6
- PARTS PROVIDED ..... 7

# RANGE HOOD INSTALLATION

## INSTALLATION NOTES

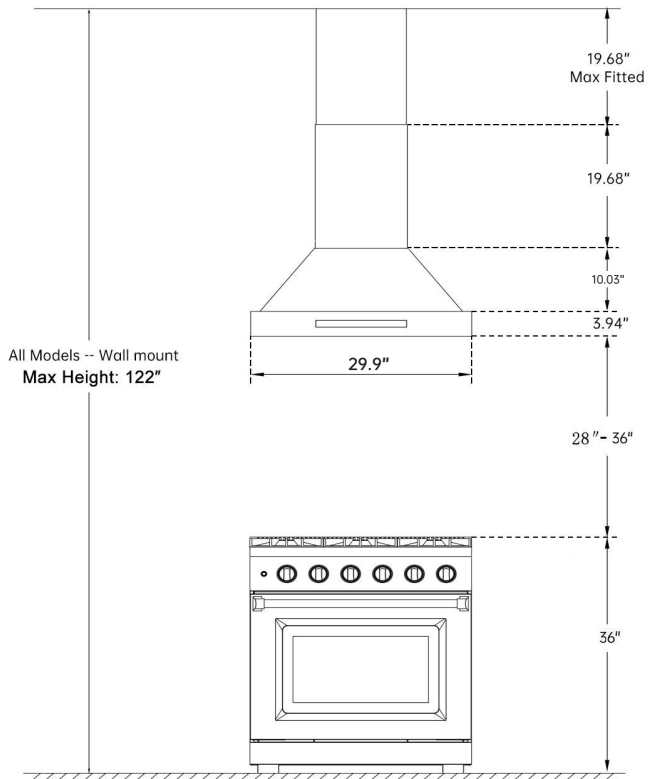
Use only the power cord and connection kits provided or specified for use with this range hood. **DO NOT** use extension cords or unapproved electrical accessories.

Note 1: Carefully remove the plastic protective film from all exterior surfaces of the hood, filters, and chimney covers before installation.

Note 2: At least **two people are required** to safely mount and install this product due to its size and weight.

Note 3: The recommended **minimum** installation height is:

- 28 inches above an electric cooktop
- 30 inches above a gas cooktop



## Step 1- Mark the installation reference lines.

- Measure the width of the range hood and locate the center point above the cooktop.
- Draw a vertical center line on the wall directly above the center of the electric or gas range.
- Draw a horizontal line 28-30 inches above an electric cooktop or 30-32 inches above a gas cooktop.
- These reference lines ensure the range hood is centered and installed at the correct height. Figure 1

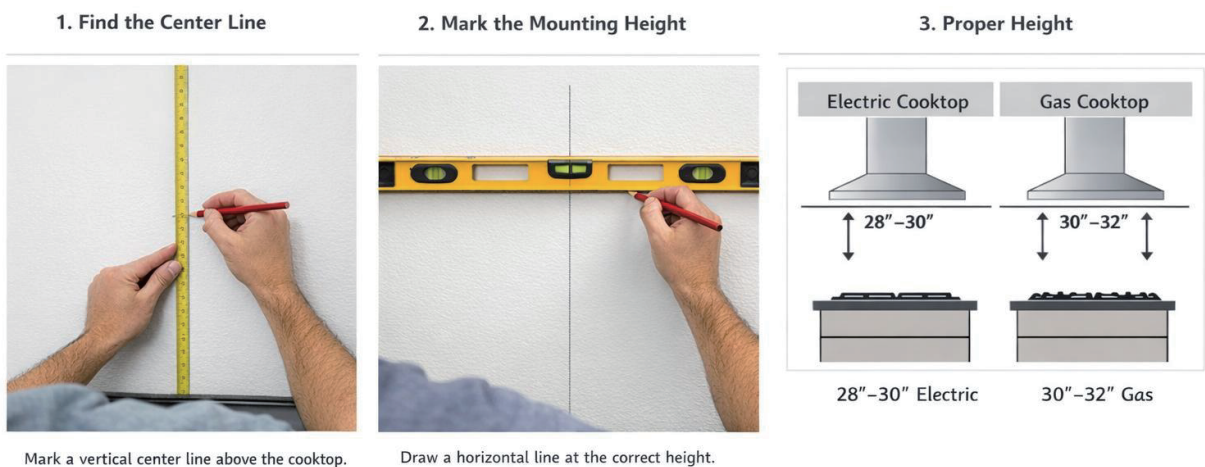


Figure 1

## Step 2 - Install the Wall Mounting Bracket on the hood

- Place the range hood on a flat, protected surface.
- Install the mounting bracket by securing it with the provided self-tapping screws (M4 × 8A).
- Make sure the bracket is firmly attached and properly aligned. Figure 2

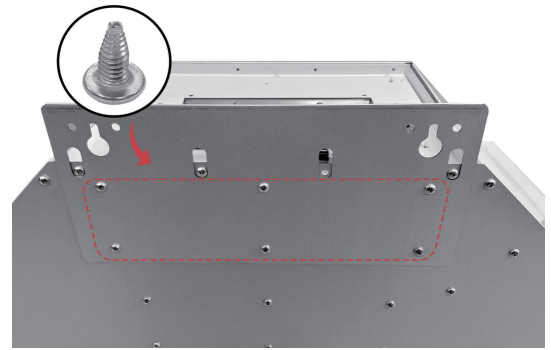


Figure 2

## Step 3 - Mount the Range Hood to the Wall

- Hold the range hood against the wall at the marked installation height.
- Use a level to ensure the hood is straight.
- Mark the wall anchor hole locations through the mounting bracket.
- Drill holes and insert the **wall anchors**.
- Hang the hood on the installed **wall anchors**.
- Secure the range hood to the wall using the provided **screws & wall anchors**.
- Confirm the hood is firmly mounted and stable. Figure 3

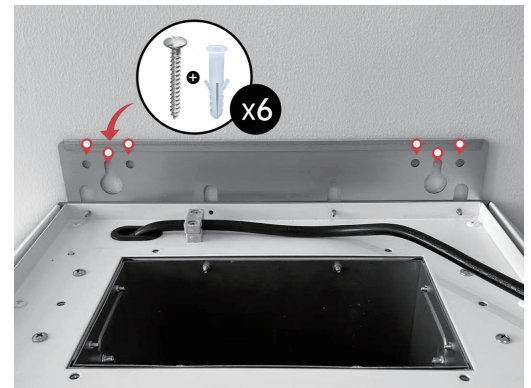


Figure 3

## Step 4 – Install the Exhaust Outlet to the Hood

- Install the exhaust outlet on the top of the hood by securing it with screws (M4\*16) provided.
- Make sure the exhaust outlet is sealed properly.
- Ensure the exhaust outlet is oriented in the correct **direction as shown in Figure 4**.



Figure 4

## Step 5 – Connect the Aluminum Foil Duct

- Attach the duct to the exhaust outlet using screws ST4x6. Figure 5
- Route the duct to the exterior vent opening.
- Avoid sharp bends to ensure proper airflow. (Refer to the ducting notes on page 11 for more details)

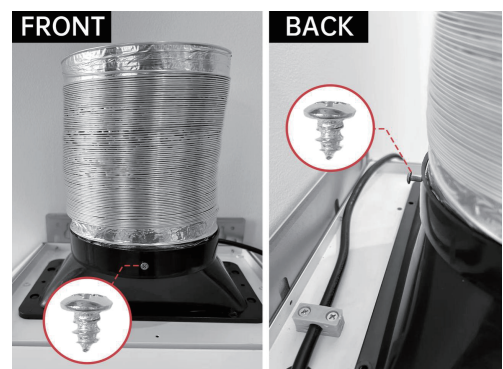


Figure 5

## Step 6 – Install the Two-Piece Chimney Covers

- Install **Chimney Mounting Bracket A** onto the lower chimney cover using the provided screws (**M4x8A**). Figure 6
- Place the lower chimney cover on top of the range hood and mark the wall anchor hole locations. Figure 7
- Drill the holes and insert the provided **wall anchors**.
- Slide the upper chimney cover into the lower chimney cover.
- Position both chimney covers on top of the range hood.
- Secure the lower chimney cover to the wall using the provided **Wall Anchors**.

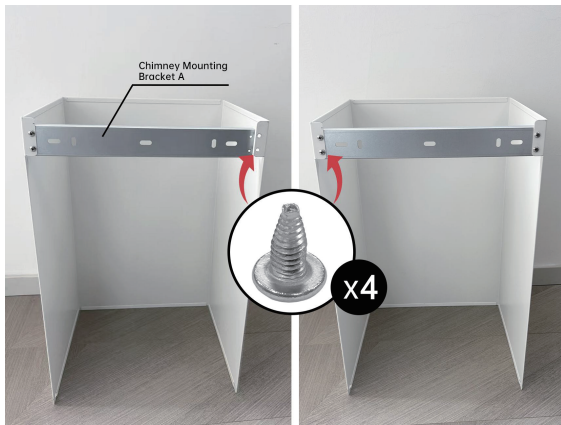


Figure 6

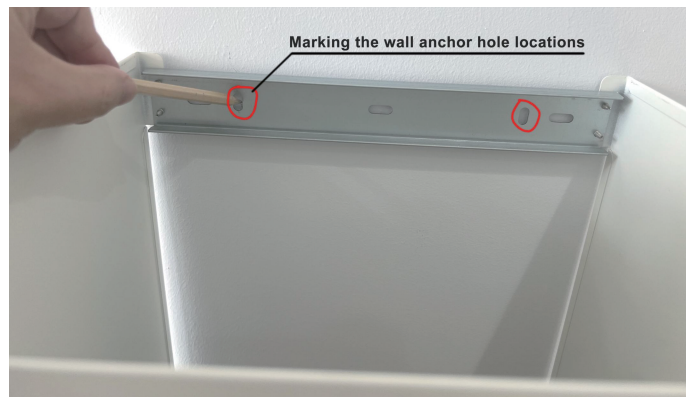


Figure 7

- Install the **upper chimney mounting bracket B** on the wall, leaving **at least 0.5 inch (13 mm)** clearance from the ceiling. Figure 8
- Extend the upper chimney cover upward and **secure it on both sides** using the provided screws (**M4x8A**). Figure 9
- Ensure both chimney covers are straight, properly aligned, and securely fixed.

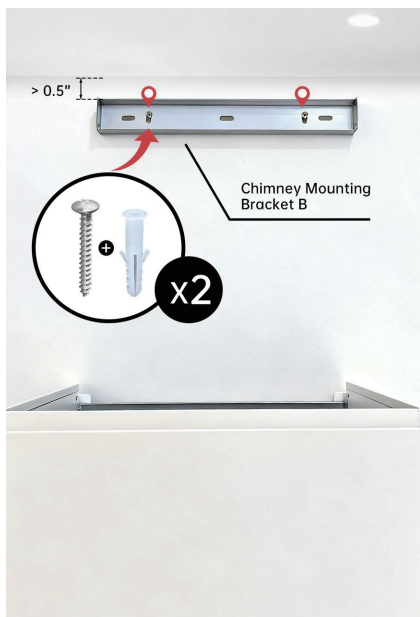


Figure 8

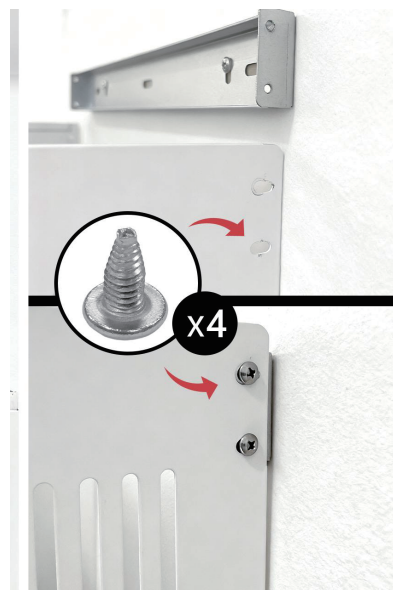


Figure 9

## Step 7 – Final Check

- Ensure all screws are tightened securely.
- Confirm the hood and chimney covers are properly aligned.
- Restore power and test the fan and lights.

## Step 8 – Install the Oil Cup and Grease Tray

- Insert the plastic oil cup into the motor area, align the slots, and press until it clicks into place.
- Place the stainless steel grease tray at the back of the range hood. Figure 10 & 11

**Note:** Empty and clean the grease tray and oil cup regularly to prevent buildup.

Figure 10

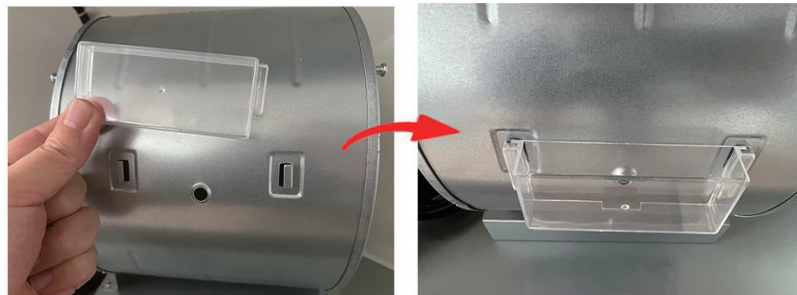


Figure 11



## Step 9 – Install the Filters

- Attach the filter handle to the filter.
- Insert the filter into the range hood and ensure it is fully seated. Figure 12

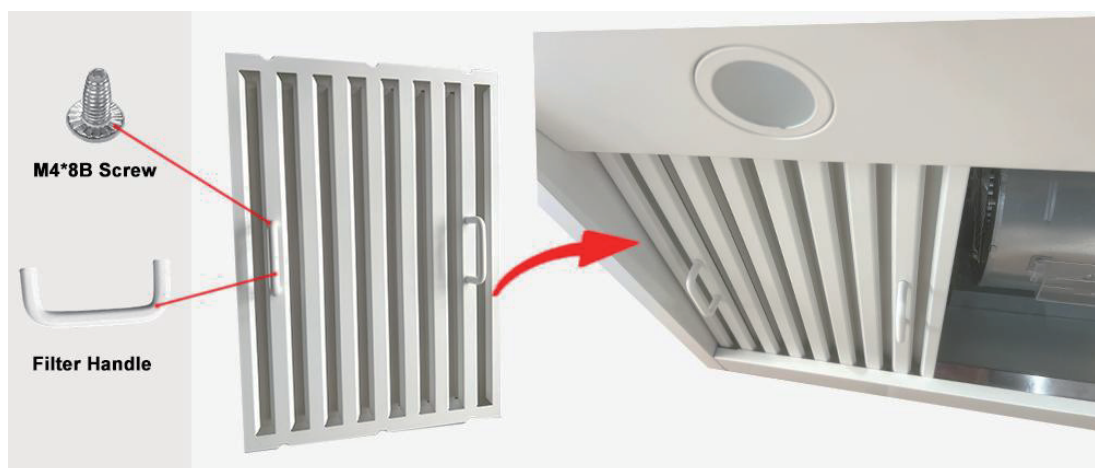


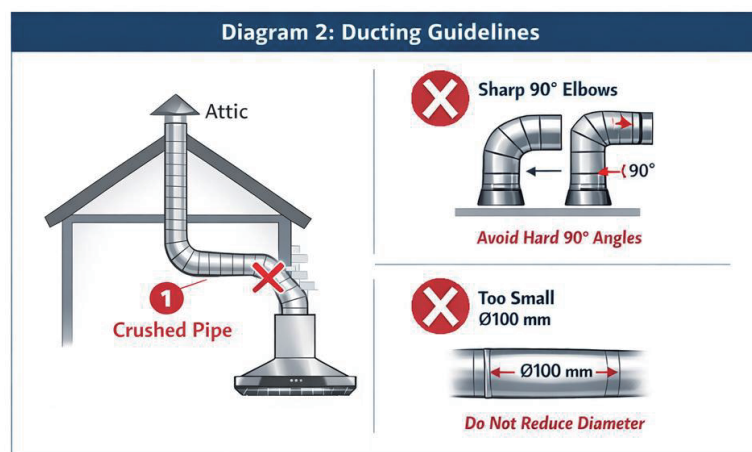
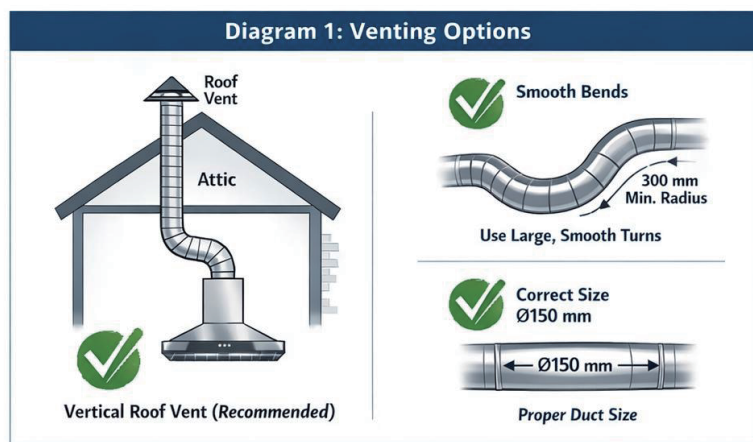
Figure 12

## Safety Reminder


- Plug the 3-prong grounded power cord (length: 1.1 m / 43 in) into a properly grounded 120V AC outlet within 40 inches of the cord exit.
- Do not use extension cords or power strips, and make sure the cord is not pinched, stretched, or in contact with sharp edges or hot surfaces.
- Two people are required for installation.
- Turn off power before installation.
- Vent air outdoors only.
- Follow all local electrical and building codes.




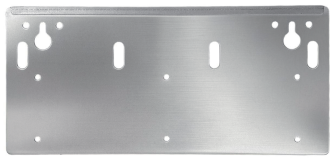




## Ducting Installation Notes

- The 2m ducting is provided with your KOSTCH range hood, please install it properly on your hood.
- The range hood must be ducted to an external exit point to ensure it operates and complies with local and national regulations. Vertical exit through the roof is highly recommended to provide the best performance (See Diagram 1).
- Avoid 90° elbows in the duct – Aim for smooth turns with a minimum radius of 300mm, ideally at least twice the duct's diameter (148mm) (See Diagram 2).
- Each fan motor must be ducted separately (do not combine to a single outlet).
- Do not reduce the duct size smaller than Ø150mm.
- The Total length of the duct hose is recommended to be less than 4m.
- Do not crush, compress or deform the duct.



## PARTS PROVIDED

Name	QTY (PCS)	Picture
Main Hood With Lights and Control Panel Pre-installed	1	
Upper Chimney Cover	1	
Lower Chimney Cover	1	
Aluminum Foil Duct	30/36inch:1; 48inch:2	
Exhaust Outlet	30/36inch:1; 48inch:2	
Grease Tray	30/36inch:1; 48inch:2	
Oil Cup	30/36inch:1; 48inch:2	
Filter	30inch:2; 36inch:3; 48inch:4	

Chimney Mounting <b>Bracket B</b> (Upper Chimney Cover)	1	
Chimney Mounting <b>Bracket A</b> (Lower Chimney Cover)	1	
Filter Handle	30inch:4; 36inch:6; 48inch:8	
Mounting Bracket	1	
<b>Wall Anchors</b>	30/36inch:10; 48inch:12	
<b>ST4x6</b> (Aluminum Foil Duct Screws)	30/36inch:2; 48inch:4	
<b>M4x8A</b> (Chimney Cover and Mounting Bracket Self-tapping Screw)	30/36inch:14; 48inch:16	
<b>M4*8B</b> (Filter Handle Screw)	30inch:8; 36inch:12; 48inch:16	
<b>M4*16</b> (Exhaust Outlet Screws)	30/36inch:6; 48inch:12	