



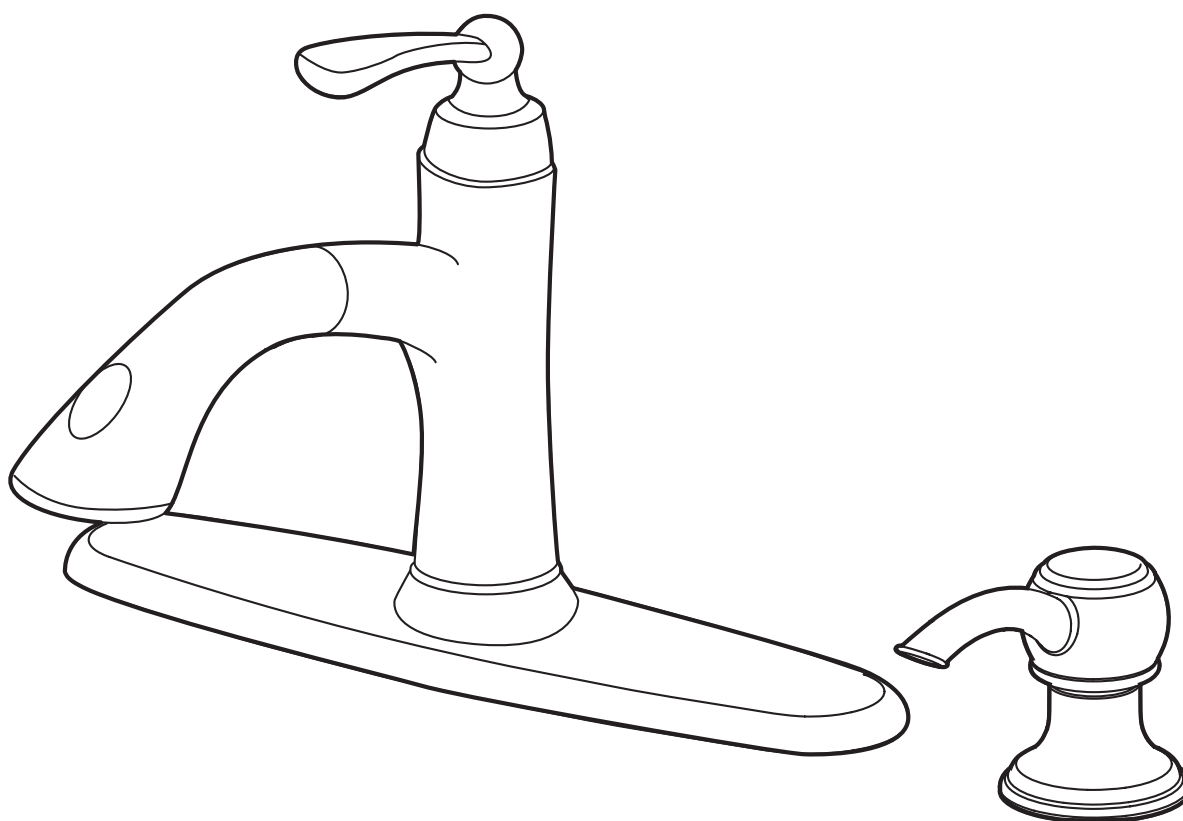
AquaSource® is a registered trademark of LF, LLC. All Rights Reserved.

ITEM #0314855

SINGLE HANDLE KITCHEN FAUCET

MODEL #67366-1127H2

Français p.9 / Español p. 16



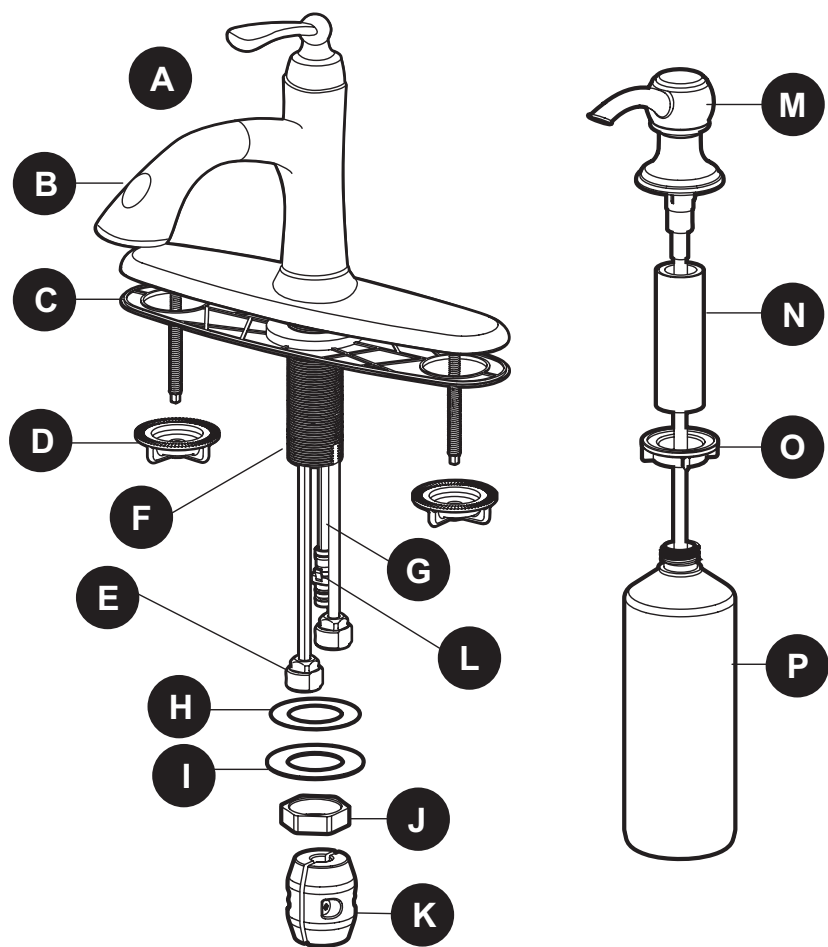
ATTACH YOUR RECEIPT HERE

Serial Number _____ Purchase Date _____



Questions, problems, missing parts? Before returning to your retailer, call our customer service department at 1-866-389-8827, 8 a.m. - 8 p.m., EST, Monday - Friday.

PACKAGE CONTENTS



PART	DESCRIPTION	QUANTITY
A	Faucet	1
B	Escutcheon (Preassembled to Faucet)(A)	1
C	Baseplate (Preassembled to Faucet)(A)	1
D	Nut (Preassembled to Faucet)(A)	2
E	Clip (Preassembled to Faucet)(A)	1
F	Shank (Preassembled to Faucet)(A)	1
G	Hose (Preassembled to Faucet)(A)	1
H	Rubber Washer (Preassembled to Shank)(F)	1
I	Metal Washer (Preassembled to Shank)(F)	1
J	Nut (Preassembled to Shank)(F)	1
K	Weight	1
L	Quick Connector (Preassembled to Hose)(G)	1
M	Pump	1
N	Body Assembly	1
O	Mounting Nut (Preassembled to Body Assembly)(N)	1
P	Bottle	1



SAFETY INFORMATION

Please read and understand this entire manual before attempting to assemble, operate, or install the product. If you have any questions regarding the product, please call customer service at 1-866-389-8827, 8 a.m. - 8 p.m., EST, Monday - Friday.

WARNING

- Follow the installation instructions carefully. Proper installation is the installer's responsibility.
- Failure to follow correct installation procedures can result in the faucet being loose, which can result in serious injury.

CAUTION

- Check local building codes before you begin installation to ensure compliance.

PREPARATION

Before beginning the assembly of this product, make sure all parts are present. Compare parts with the package contents list. If any part is missing or damaged, do not attempt to assemble the product. Contact customer service for replacement parts.

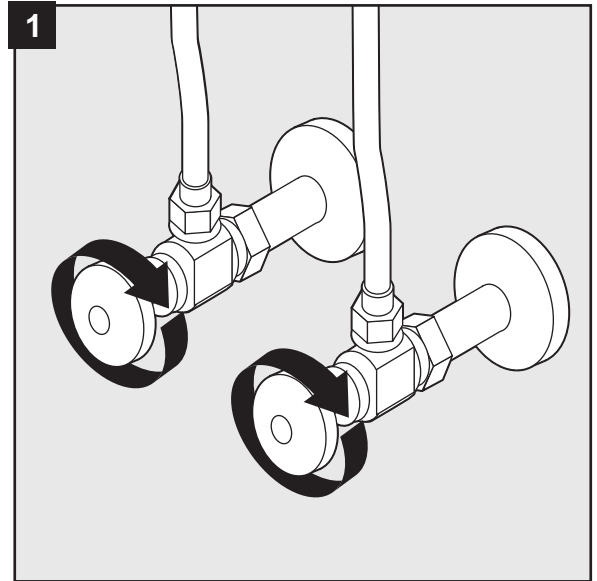
Estimated Assembly Time: 60 minutes, Including the Removal of Old Faucet

Tools Required for Assembly (not included): Adjustable Wrench, Phillips Screwdriver, Pliers, Silicone Sealant, Allen Wrench

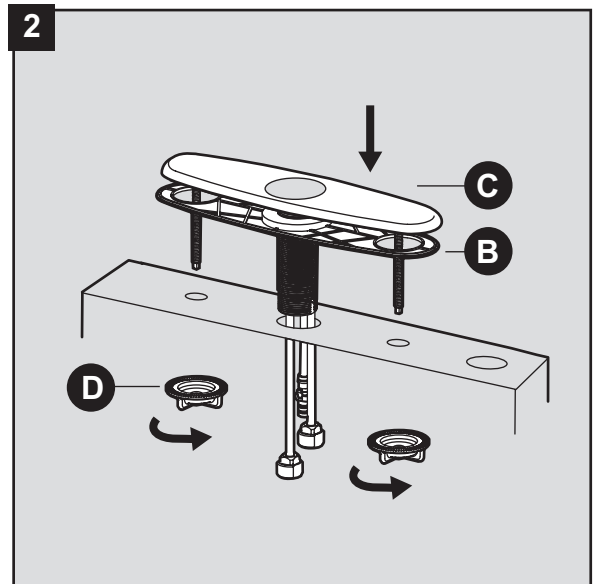
Helpful Tools (not included): Basin Wrench, Water Supply Lines

ASSEMBLY INSTRUCTIONS

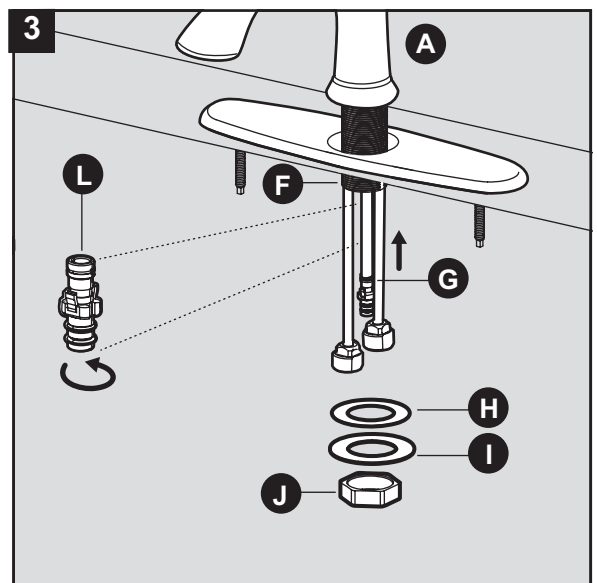
1. Shut off the water supply and remove the old faucet.



2. Prepare the faucet for installation:
 - a. Unscrew the pre-attached nuts (D) from the faucet.
 - b. Place the baseplate (C) and escutcheon (B) on the sink.
 - c. From underneath the sink, re-attach and hand-tighten the nuts (D).



3. Install the faucet:
 - a. Remove the quick connector (L) from the hose (G) by unscrewing it counter-clockwise.
 - b. Retract the hose (G) up through the faucet (A), until the hose (G) fitting is flush with the bottom of the shank (F). Do not pull the fitting past the shank (F).
 - c. Insert the faucet (A) through the holes in the top of the sink.
 - d. From underneath the sink, install the rubber washer (H), metal washer (I), and nut (J) onto the mounting shank (F).

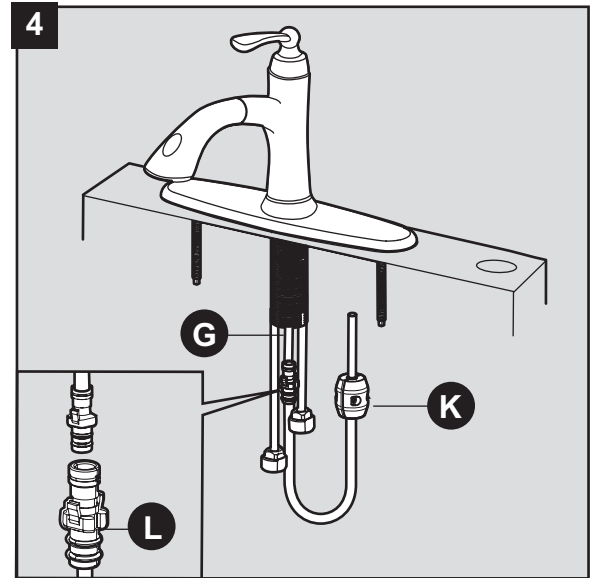


Note: Do not feed the hose (G) back down through the spout until step 4.

ASSEMBLY INSTRUCTIONS

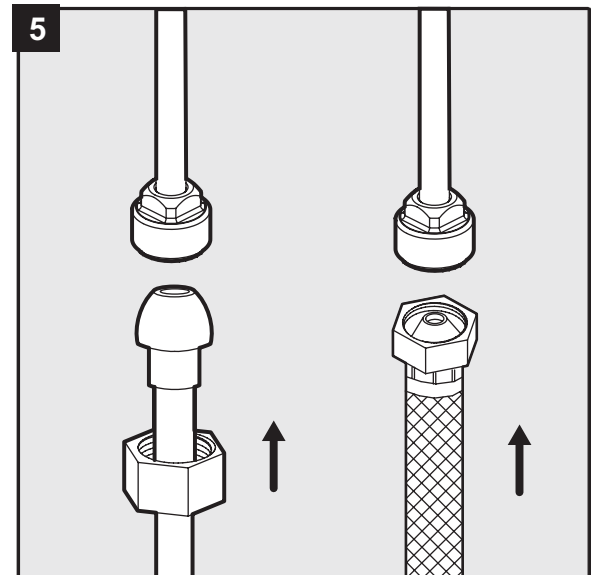
4. Install the hose:
 - a. Screw the quick connector (L) onto the free end of the hose (G).
 - b. Attach the weight (K) to the hose (G) at the bottom of the loop.
 - c. Return the hose (G) to the proper position.

If it is necessary to remove the hose, press on the tabs and pull the quick connector (L) down

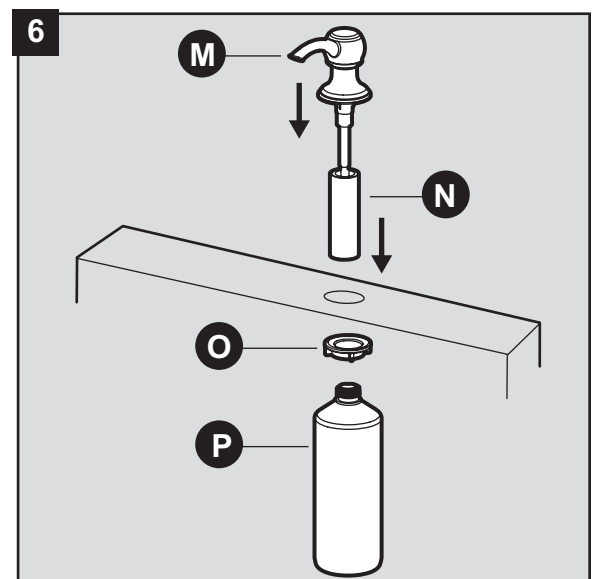


5. Connect a 1/2 in. IPS faucet connector or coupling nuts (not included) with 3/8 in. O.D. ball-nose risers (not included) to the water supplies underneath the sink using wrenches (not included).

Note: Refer to the local plumbing codes for permissible types of water supply connectors.

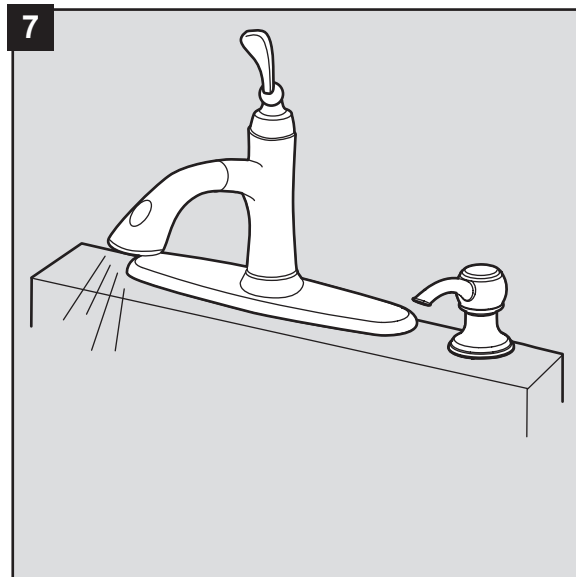


6. Install the soap dispenser:
 - a. Insert body assembly (N) through the selected hole in the sink.
 - b. Secure the body assembly (N) to the sink with the mounting nut (O).
 - c. From under the sink, screw the bottle (P) onto the shank of the body assembly (N).
 - d. Insert the pump (M) down into the body assembly (N).



ASSEMBLY INSTRUCTIONS

7. After the installation is complete:
- Turn on the water supply and allow both hot and cold water to run for at least one minute each.
 - While the water is running, check for leaks.



CARE AND MAINTENANCE

- Clean carefully by gently wiping with a grit-free damp cloth.
- Use only mild soap with water.
- Never use acids, harsh chemicals, or abrasive detergents to clean the faucet surface.

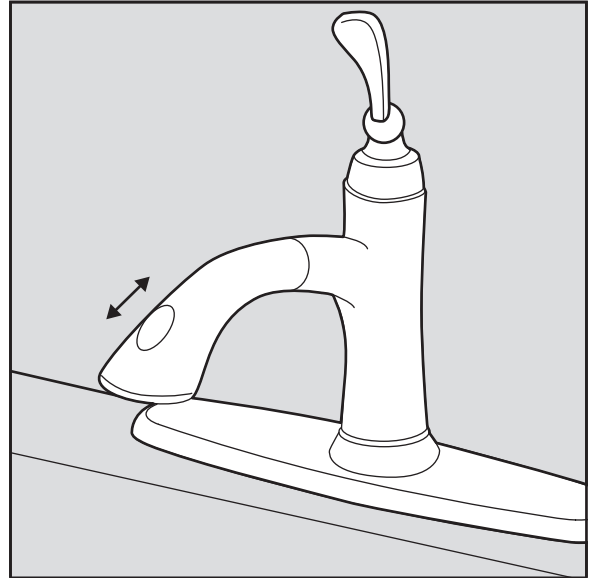
TROUBLESHOOTING

If you have any questions regarding this product, please call customer service at 1-866-389-8827, 8 a.m. - 8 p.m., EST, Monday - Friday.

PROBLEM	POSSIBLE CAUSE	CORRECTIVE ACTION
There is a leak under the handle.	The cartridge is damaged.	Remove the handle and replace the cartridge.
There is an inconsistent water-flow pattern.	The aerator is dirty.	Unscrew the aerator and check the rubber washer.
The spout/aerator has a leak.	The cartridge is damaged.	Remove the handle and replace the cartridge.

OPERATING INSTRUCTIONS

- Push the button underneath the faucet forward for stream.
- Push the button underneath the faucet backwards for spray.



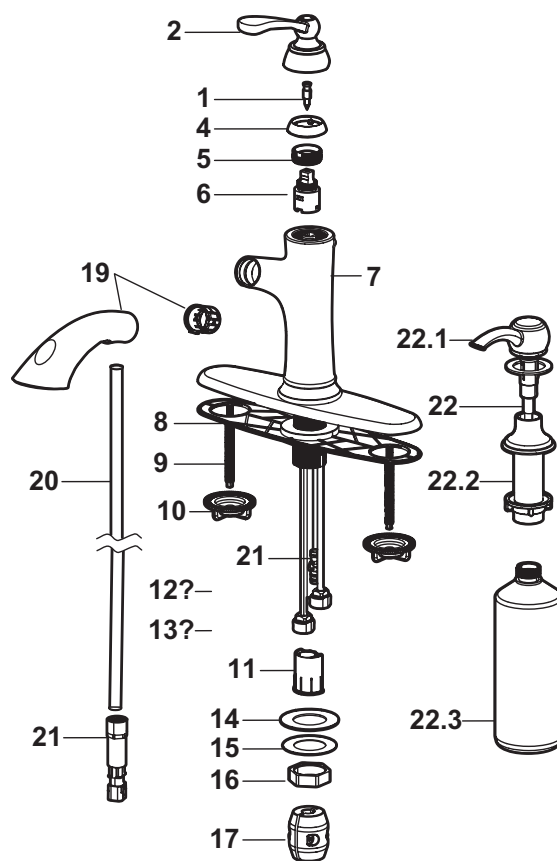
WARRANTY

This faucet has been manufactured under the highest standard of workmanship. All parts of this faucet are warranted to be free from leaks or drips during domestic use for as long as the original purchaser owns this product. **THIS EXCLUDES INDUSTRIAL, COMMERCIAL, OR BUSINESS USE.** The manufacturer will replace **FREE OF CHARGE**, under the warranty conditions the entire unit or any part (at our option) which proves defective in material and/or workmanship under normal installation, use and service. This warranty is limited to defective parts as stated. All costs of removal and installation of the faucet, including the replacement of warranty parts are the responsibility of the purchaser. The manufacturer shall not be liable for incidental, consequential or special damages arising at or in connection with product use or performance except as may otherwise be accorded by law. This warranty gives you specific legal rights, and you may also have other rights which may vary from state to state. Any damage to this faucet as a result of misuse, abuse, neglect, accident, improper installation, or any use violating instructions furnished by us, **WILL VOID THIS WARRANTY.** When requesting warranty service, you will need to present a copy of your sales receipt as proof of purchase. To obtain warranty service, call our customer service department at 1-866-389-8827.

REPLACEMENT PARTS LIST

For replacement parts, call our customer service department at 1-866-389-8827, 8 a.m. - 8 p.m., EST, Monday - Friday.

PART	DESCRIPTION	QUANTITY
1	Setscrew	RP50002
2	Handle	RP13254
3	Connect	RP50092
4	Cap	RP80237
5	Bonnet	RP70372
6	Cartridge	RP20031
7	Escutcheon	RP80226
8	Baseplate	RP80331
9	Bolt	RP50071
10	Mounting Nut	RP56036
11	Clip	RP70005
12	O-Ring	RP60002
13	Tunnel	RP70374
14	Rubber Washer	RP64131
15	Metal Washer	RP64111
16	Nut	RP56063
17	Weight	RP70223
18	Inverter	RP70373
19	Sprayer Assembly	RP38124
20	Hose	RP70322
21	Quick Connector	RP70284
22	Soap Dispenser	RP46048
22.1	Pump	RP46040
22.2	Body Assembly	RP46049
22.3	Bottle	RP46002



Printed in China