

ORNAMENTAL

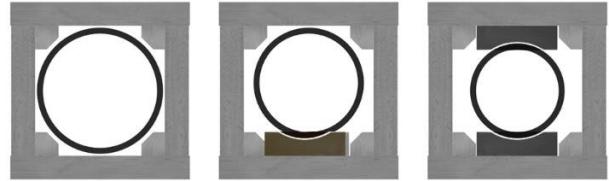
DECORATIVE MOULDING & MILLWORK

A NOVO Building Products Company

LALLY COLUMN WRAP INSTALLATION INSTRUCTIONS

NOTE:

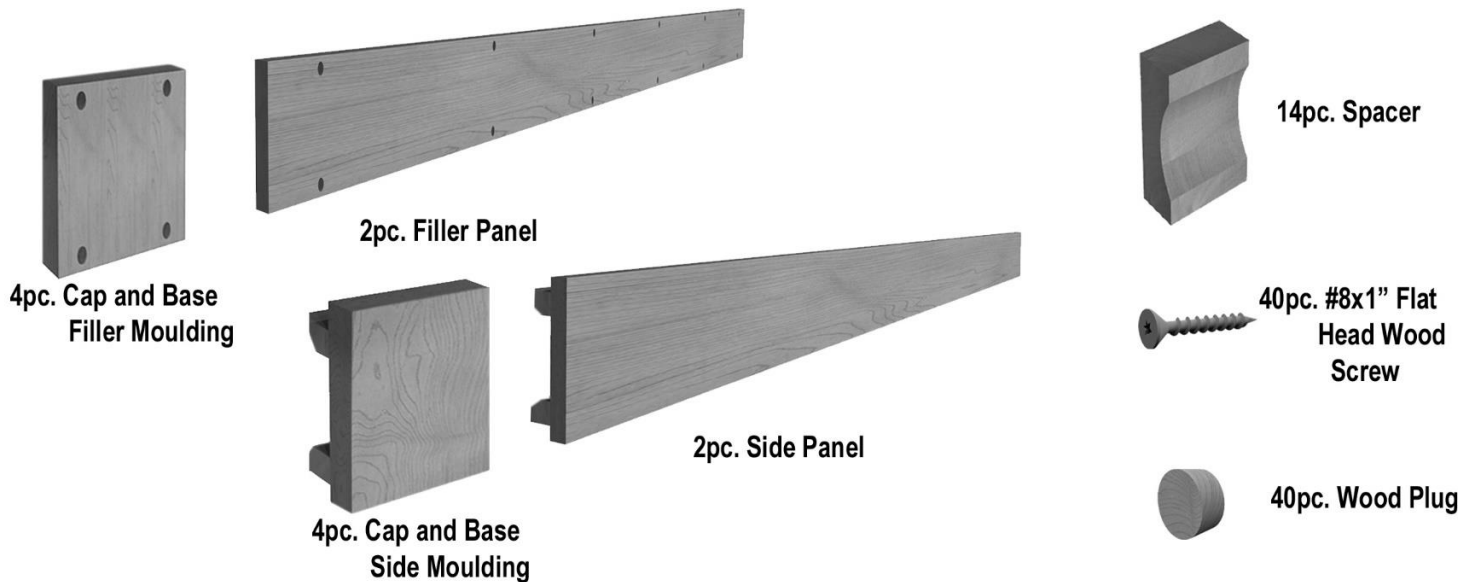
This kit is designed for use with 3", 3-1/2" and 4" diameter Lally Columns. Use with other jack poles may require foam filling or custom spacers. For 4" diameter columns, no spacers are required. For 3-1/2" diameter columns' spacers are required for one side only. For 3" diameter columns, spacers are required on both sides.



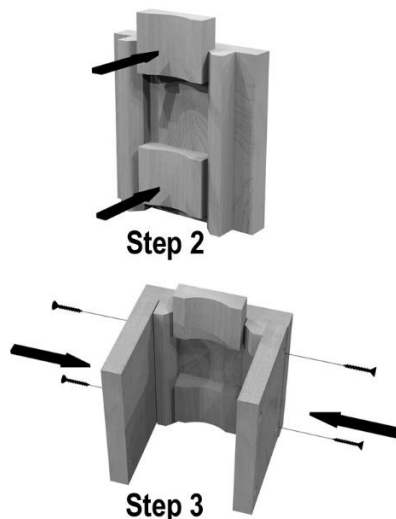
YOU WILL NEED:

Safety glasses	Measuring Tape
Level	Pencil
T-20 Star Bit Driver	Double sided foam sticky tape
Construction Adhesive	Fine Tooth Saw
Quick Grip Clamps	Framing Square
Paintable Caulk	Fine Grain Sand Paper
(for Painted Finish)	Wood Glue

- Pro Tip:**
1. For use in damp spaces, seal or prime all surfaces prior to assembly.
 2. Using Clamps to align and hold pieces in place while inserting screws will aid in tighter joints.
 3. While it is not absolutely necessary to use glue at the joints, it can provide more secure joints.
 4. Refer to and follow all finishing instructions for best results in appearance and endurance of your column wrap.

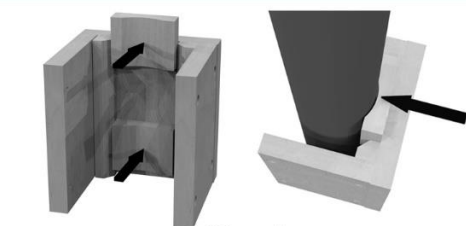


INSTRUCTIONS:

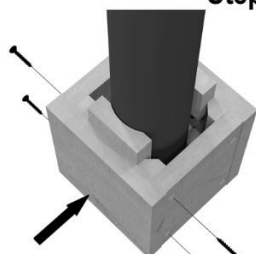


1. Measure height of column from floor to ceiling. Subtract 12" from column height. Trim side and filler panels to this length.
2. For 4" diameter columns skip this step. For 3-1/2" diameter poles, using Construction Adhesive or two-sided tape, attach Spacers as shown to 1 Base/Cap Side Moulding. For 3" diameter columns attach Spacers as shown to 2 Base/Cap Side Mouldings.
3. Using #8x1" Flat Head Wood Screws, attach 2 pc. Cap/Base Filler Mouldings to sides of one Base/Cap Side Moulding as shown.

LALLY COLUMN WRAP INSTALLATION INSTRUCTIONS



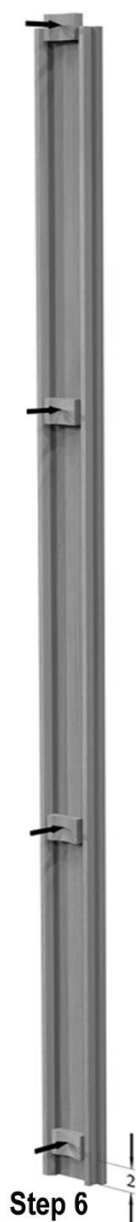
Step 4



Step 5

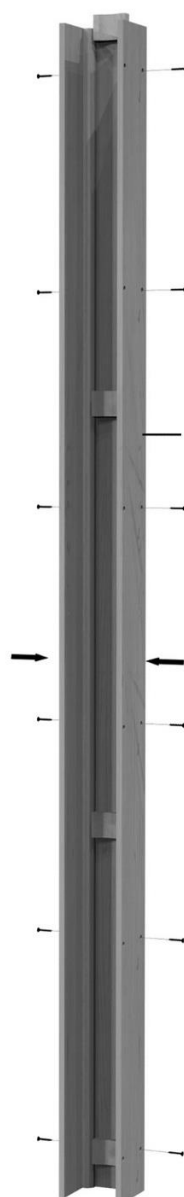
4. Apply Sticky Tape or Construction Adhesive to the Spacer blocks (For 4" diameter columns apply directly to the Moulding). Orient assembly at base of the pole gently pressing to contact.

5. Apply Sticky Tape or Construction Adhesive to the Spacer Blocks of the other Base/Cap Side Moulding (For 3-1/2" and 4" Diameter Columns, apply directly to the Side Mouldings). Position as shown against column and base assembly. Secure with #8x1" Flat Head Wood screws.



Step 6

6. For 4" diameter columns skip this step. For 3-1/2" diameter poles, use Construction Adhesive or two-sided tape, to attach Spacers as shown to 1 Side Panel. For 3" diameter columns attach Spacers as shown to 2 Side Panels.



Step 7

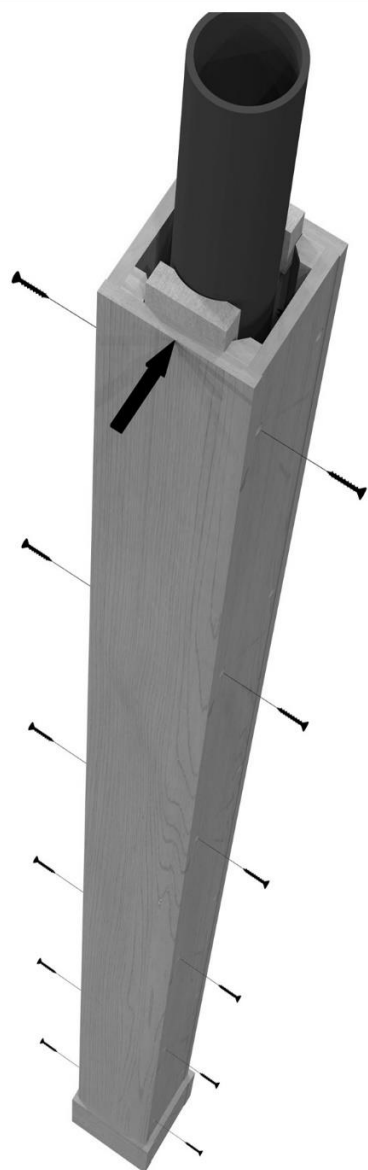
7. Using #8x1" Flat Head Wood Screws, attach 2 pc. Filler Panels to sides of one Side Panel as shown.

8. Apply Sticky Tape or Construction Adhesive to the Spacer Blocks (For 3-1/2" and 4" diameter Columns apply directly to the Side Panels). Apply a thin bead of Construction Adhesive to the top inside edge of the Base assembly and to the outside surface of the exposed spacers. Gently press Side Panel assembly to the pole and slide down to the base assembly.



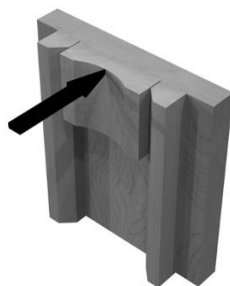
Step 8

LALLY COLUMN WRAP INSTALLATION INSTRUCTIONS



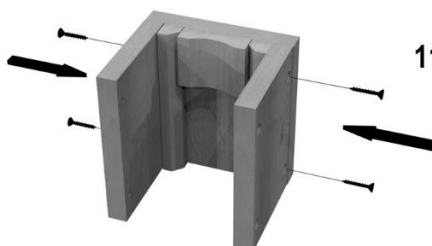
Step 9

9. Apply Sticky Tape or Construction Adhesive to the Spacer Blocks of the other Side Panel (For 3-1/2" and 4" Diameter Columns, apply directly to the Side Mouldings). Position as shown against Panel assembly. Secure with #8x1" Flat Head Wood screws.



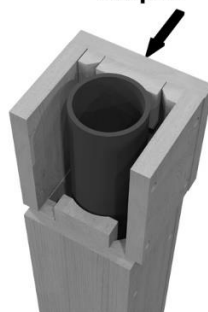
Step 10

10. For 4" diameter columns skip this step. For 3-1/2" diameter poles use Construction Adhesive or two-sided tape, attach a Spacer as shown to 1 Base/Cap Side Moulding. For 3" diameter columns attach Spacers as shown to 2 Base/Cap Side Mouldings.



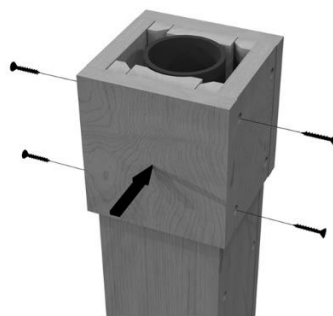
Step 11

11. Using #8x1" Flat Head WoodScrews, attach 2 pc. Cap/Base Filler Mouldings to sides of one Base/Cap Side Moulding as shown.



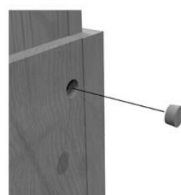
Step 12

12. Slide the assembly into place atop the Side Panel Assembly to check for fit. Remove and apply Sticky Tape or Construction Adhesive to spacer (to wall for 4" Column). Apply a thin bead of Construction Adhesive to the lower inside edge of the Cap assembly and to the outside surface of the exposed spacers. Gently press Cap assembly to the pole and slide down to the base assembly.



Step 13

13. Apply Sticky Tape or Construction Adhesive to the Spacer Blocks of the other Base/Cap Side Moulding (For 3-1/2" and 4" Diameter Columns, apply directly to the Side Mouldings). Position as shown against column and cap assembly. Secure with #8x1" Flat Head Wood screws.



Step 14

14. Apply Wood Glue to side of plugs and press firmly into screw holes. Sand flush using fine grit sand-paper.