

NOTICE

*Please make sure that you have all parts indicated and they are in good condition before you begin assembly of this item. Refer to part list and hardware list below for guidance.

*This item should be assembled on a soft surface to prevent scratching the finish during assembly.

*This item may require periodic tightening.

*If you are having difficulty, our friendly Customer Care team is always here to help. Please email customersupport@safavieh.com

PREPARATION

*Before beginning assembly of product, make sure all parts are present. Compare parts with part contents list and hardware contents list.

*If any part is missing or damaged, do not attempt to assemble the product.

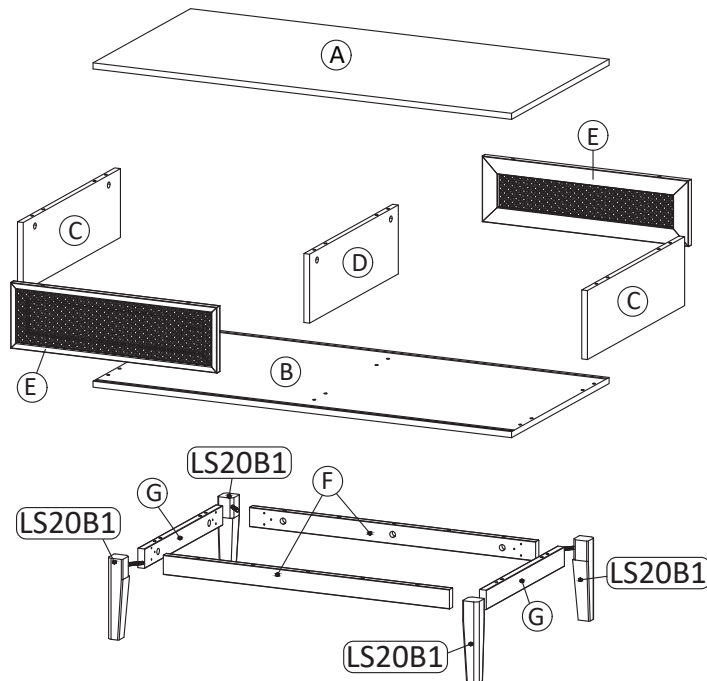
*Estimated Assembly Time: 60 minutes.

*Tools Required for Assembly (included): Allen Key

CARE AND MAINTENANCE

Always use felt pads under all articles to prevent discolouration or softening of the lacquer. Plastic and rubber bases on items can discolor wood. Wipe up spills immediately and avoid common hazards such as hot dishes, harsh solvents and abrasives. Cleaning should be done with a soft lint free cotton cloth dampened with water or furniture polish. On highly used surfaces we recommend applying a quality paste wax which should be used on a regular basis to provide additional protection from scratches and spills. How often you apply the wax depends on how much wear the furniture receives.

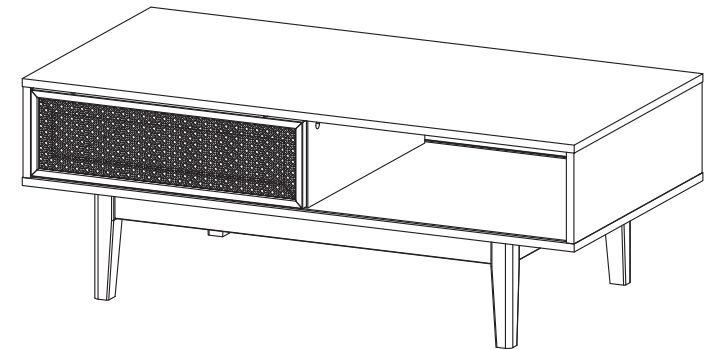
Part List



 **SAFAVIEH**
FURNITURE

Model# COF9602

Product Dimensions: 43"Wx22"Dx16"H

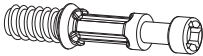


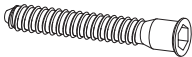

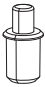


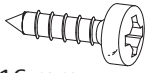



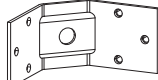


WARNING :

WEIGHT CAPACITY: 86.7 LBS.

SHELF LOAD CAPACITY : 42.9 LBS.

Hardware List

<div>HW1x16</div> <div></div> <div>Ø 6 x 35 mm</div>	<div>HW2x16</div> <div></div> <div>Ø 15 mm</div>	<div>HW3x6</div> <div></div> <div>Ø 15 mm</div>	<div>HW4x6</div> <div></div> <div>M 7 x 50 mm</div>	<div>HW5x2</div> <div></div> <div>L 4</div>	<div>HW6x4</div> <div></div>
<div>HW7x4</div> <div></div>	<div>HW8x4</div> <div></div>	<div>HW9x24</div> <div></div> <div>M 4 x 16 mm</div>	<div>HW10x4</div> <div></div>	<div>HW11x1</div> <div></div>	<div>HW12x20</div> <div></div> <div>Ø 8 x 30 mm</div>
<div>HW BC410x4</div> <div></div>					

Part List & HW For Multi-Box Items

Piece	Description	Qty	Carton Call
A	Top Board	1	1 of 1
B	Bottom Board	1	1 of 1
C	Side Board	2	1 of 1
D	Center Board	1	1 of 1
E	Frame Door	2	1 of 1
F	Bottom Skirt 1	2	1 of 1
G	Bottom Skirt 2	2	1 of 1
LS20B1	Leg	4	1 of 1

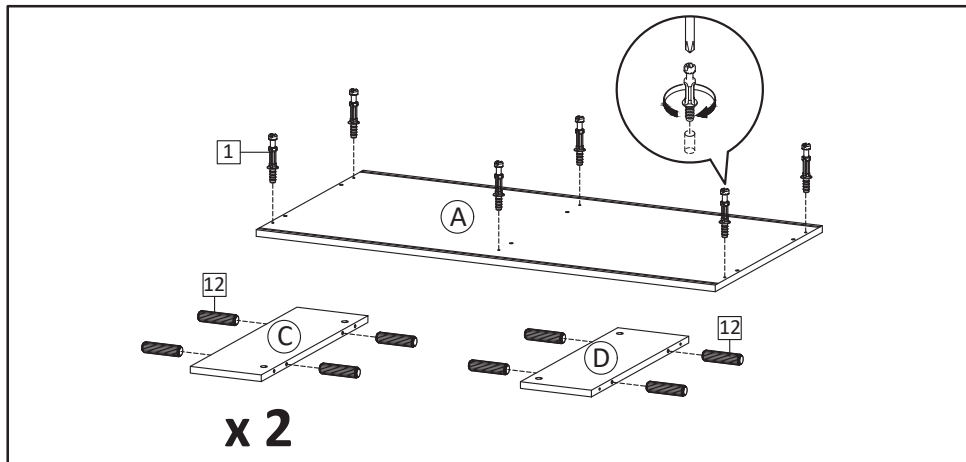
Piece	Description	Qty	Carton Call
HW1	Cambolt	16	1 of 1
HW2	CamLock	16	1 of 1
HW3	Screw Cap	6	1 of 1
HW4	Screw M 7 x 50 mm	6	1 of 1
HW5	Allen Key	2	1 of 1
HW6	Pin Sliding Top	4	1 of 1
HW7	Pin Sliding Bottom	4	1 of 1
HW8	Silicon Bumper	4	1 of 1
HW9	Screw M 4 x 16 mm	24	1 of 1
HW10	Flange Nut	4	1 of 1
HW11	Wrench	1	1 of 1
HW12	Dowel	20	1 of 1
HW BC410	Corner Brace	4	1 of 1

PREPARATION

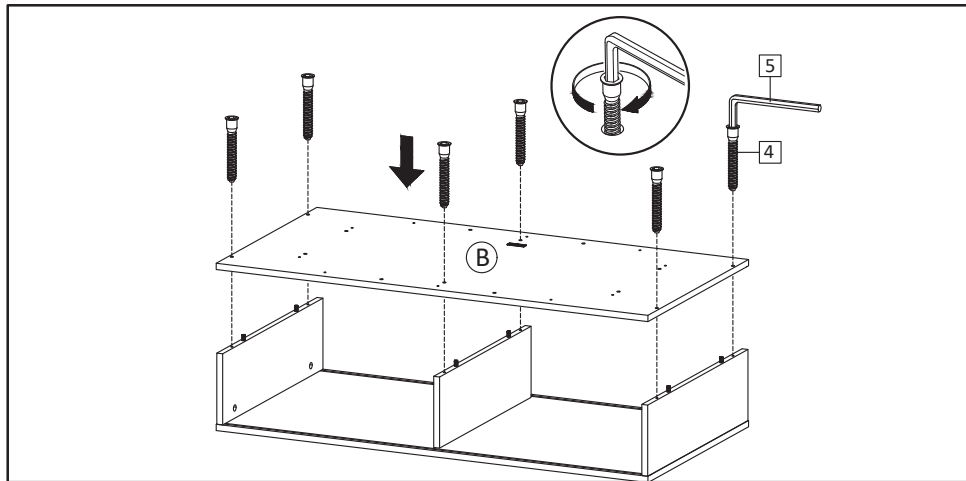
Before beginning assembly of product, make sure all parts are present. Compare parts with part contents list and hardware contents list.

If any part is missing or damaged, do not attempt to assemble the product.

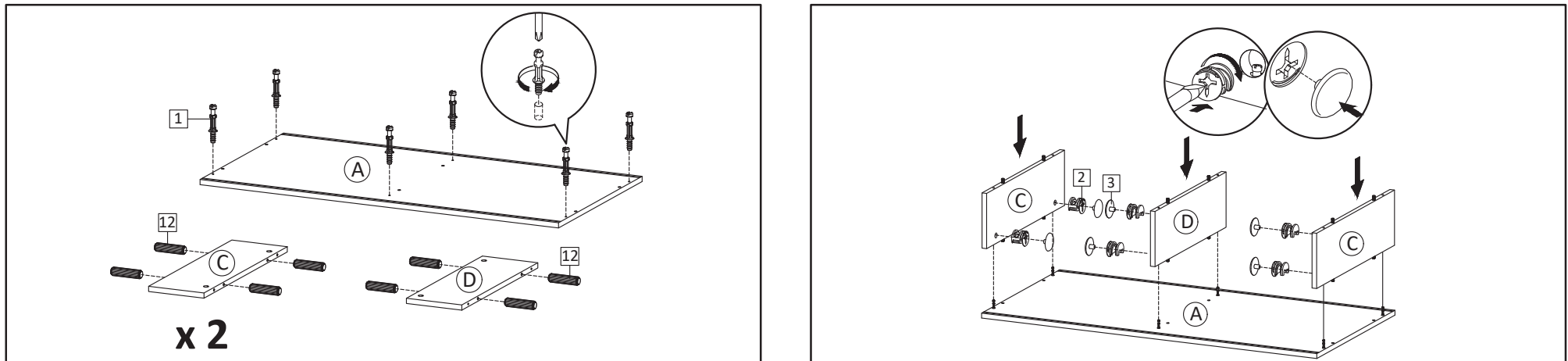
Estimated Assembly Time: 60 minutes.



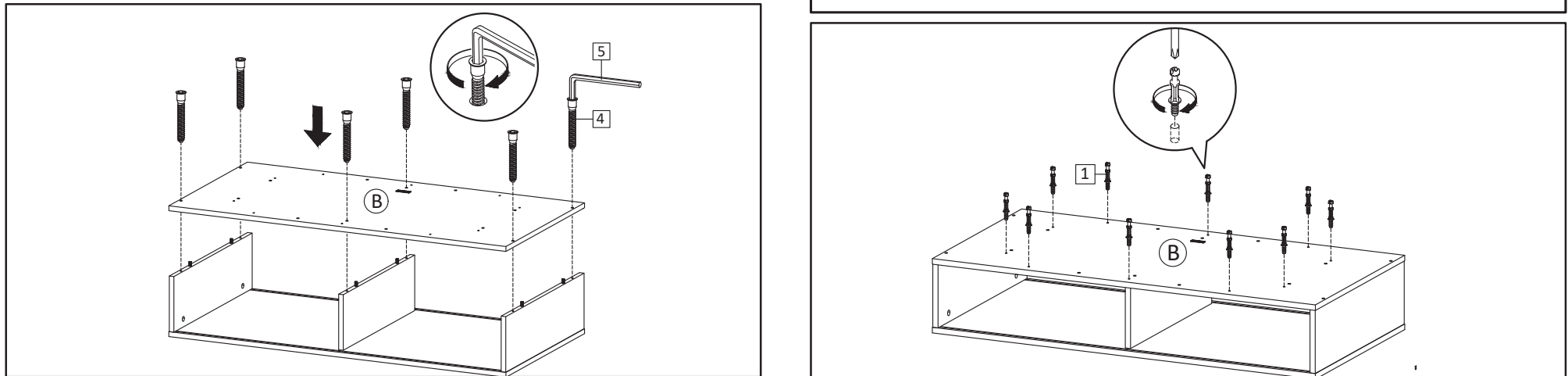
STEP1: Insert Cambolt (HW1) into Top Board (A).
Insert Dowel (HW12) into Side Board (C) and Center Board (D).



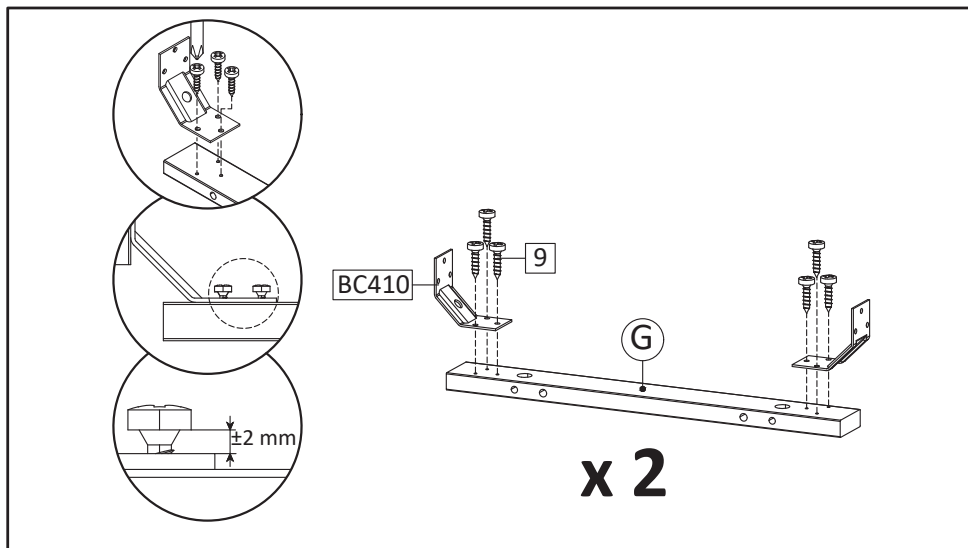
Step3: Insert Bottom Board (B) and secure with Screw M7x50 (HW4),
tighten screws using Allen Key (HW5).



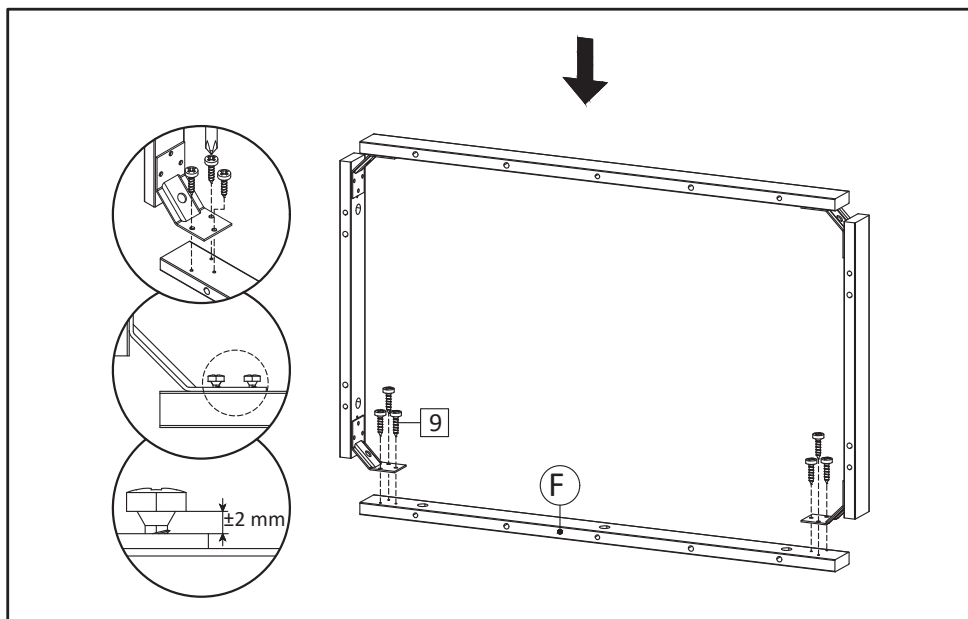
STEP2: Attach Side Board (C) and Center Board (D), into Top Board (A) .
Insert Camlock (HW2) then tighten using screwdriver.
Put Screw Cap (HW3) over the camlock.



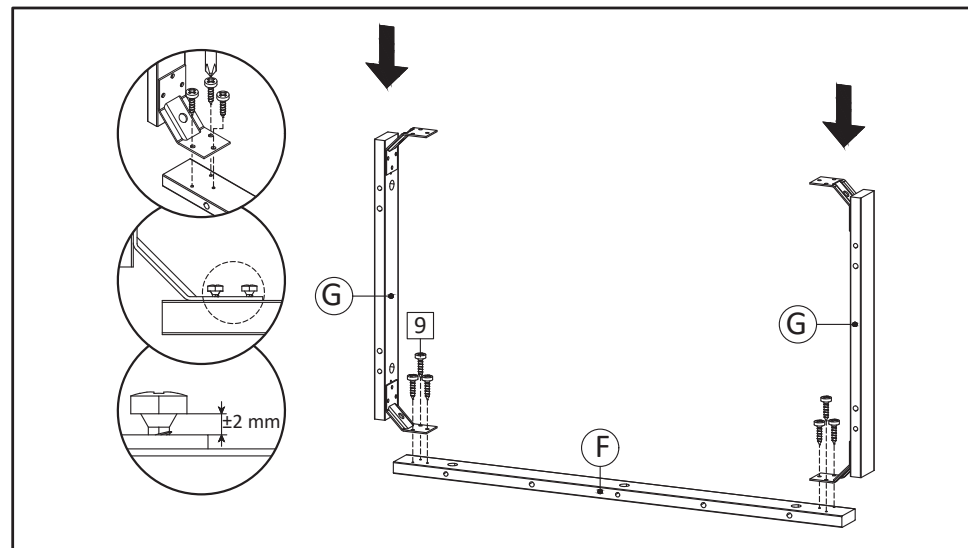
STEP4: Insert Cambolt (HW1) into Bottom Board (B).



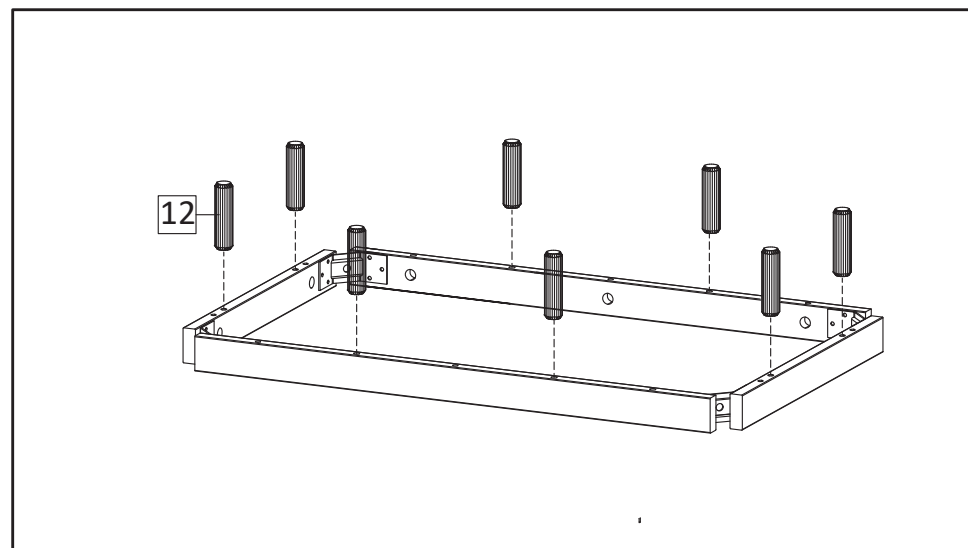
STEP5: Now let's combine the bottom skirt. Start with installing Corner Brace (HW BC410) into Bottom Skirt 2 (G) using Screw M4x16 (HW9). Do not overtight screw yet, leave around 2mm gap.



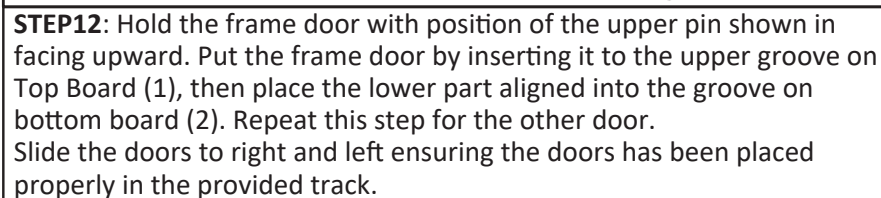
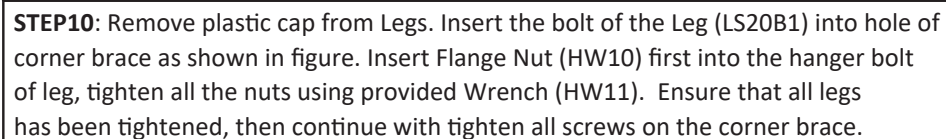
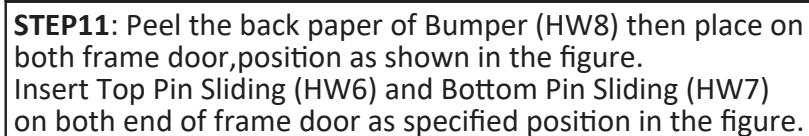
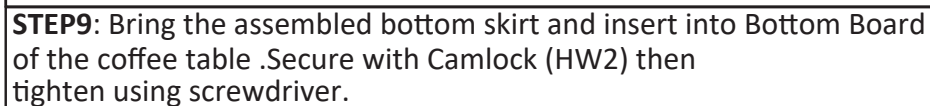
STEP7: Combine the Support Leg 2 from step 6 with remaining Bottom Skirt 1 (F), using Screw M4x16 (HW9). Do not overtight screw yet, leave around 2mm gap.

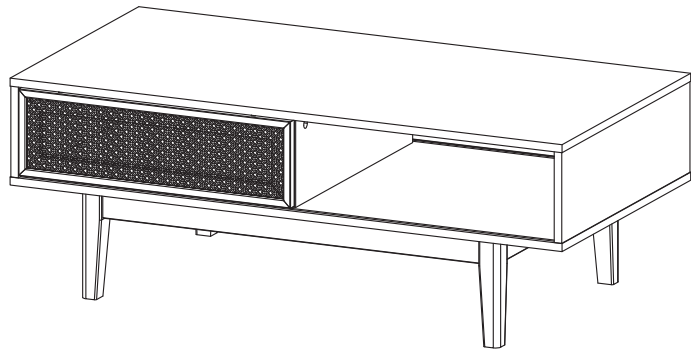


STEP6: Combine the Bottom Skirt 2 from step 5 with Bottom skirt 1 (F), using Screw M4x16 (HW9). Do not overtight screw yet, leave around 2mm gap.



STEP8: Insert Dowel (HW12) into assembled bottom skirt.





STEP13: Assembly is complete.