

THERMOSTATIC SHOWER Series INSTALLATION GUIDE



Model : 6001

Model : 6371

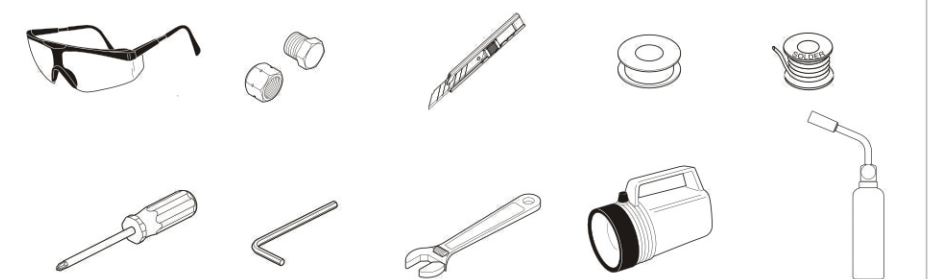
B-5.2

◆ INSTALLATION CONDITION

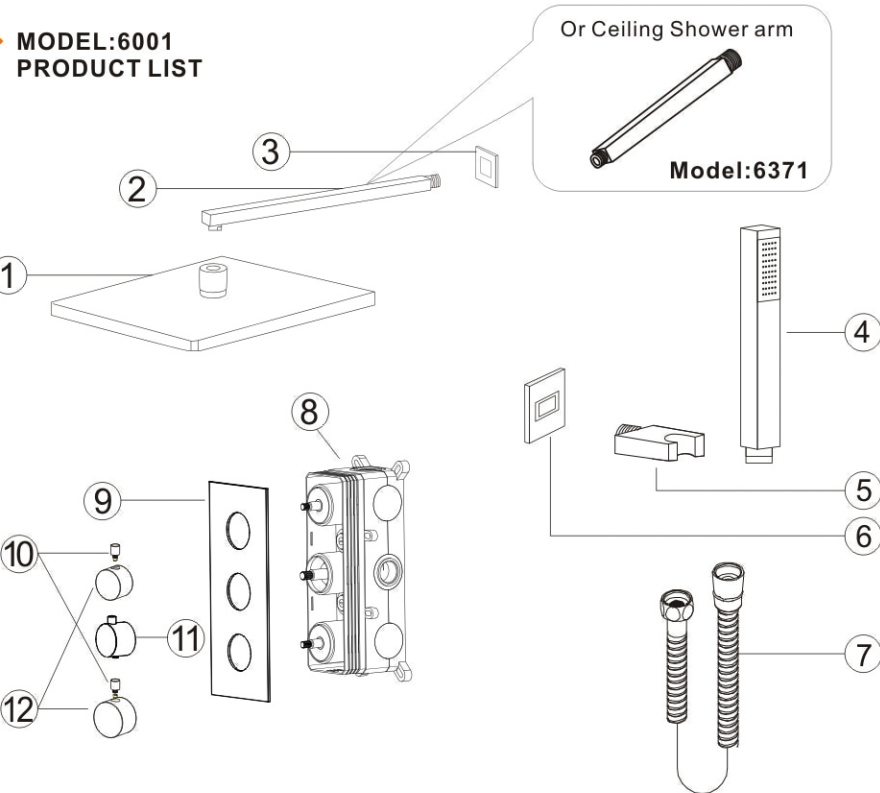


- 1.Refer to the 《Standard Part List》 when unpacking , check all parts available .
- 2.Do not disassemble mixer body by yourself.
- 3.Connect inlet hoses to supply valves.
- 4.Make sure inlet pipes and supply valves have been installed and cleaned, also ensure no impurities in pipeline.
- 5.After installation , check all joints for leakages.
- 6.Suggest don't fit the faucet in the severely corrosive environments.

YOU MAY NEED:

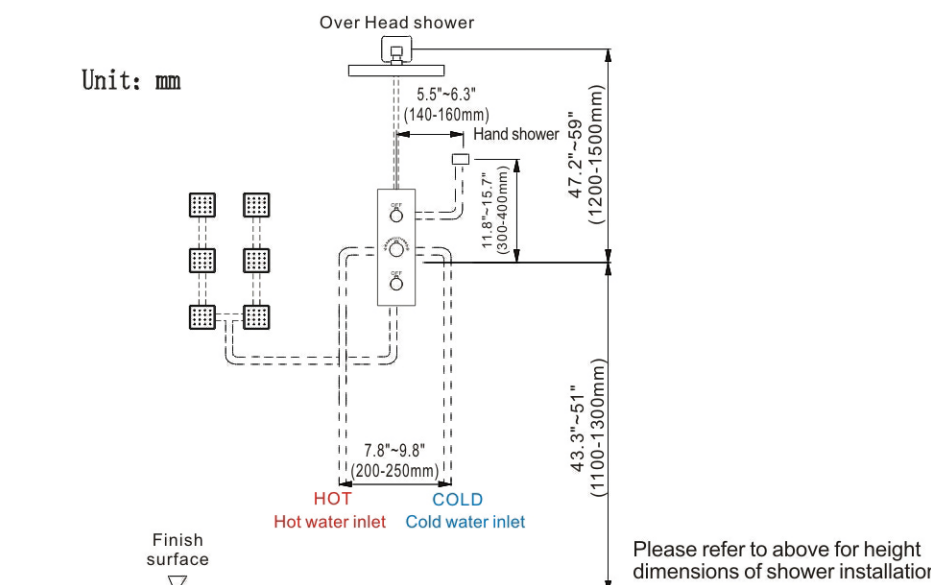


◆ MODEL:6001 PRODUCT LIST

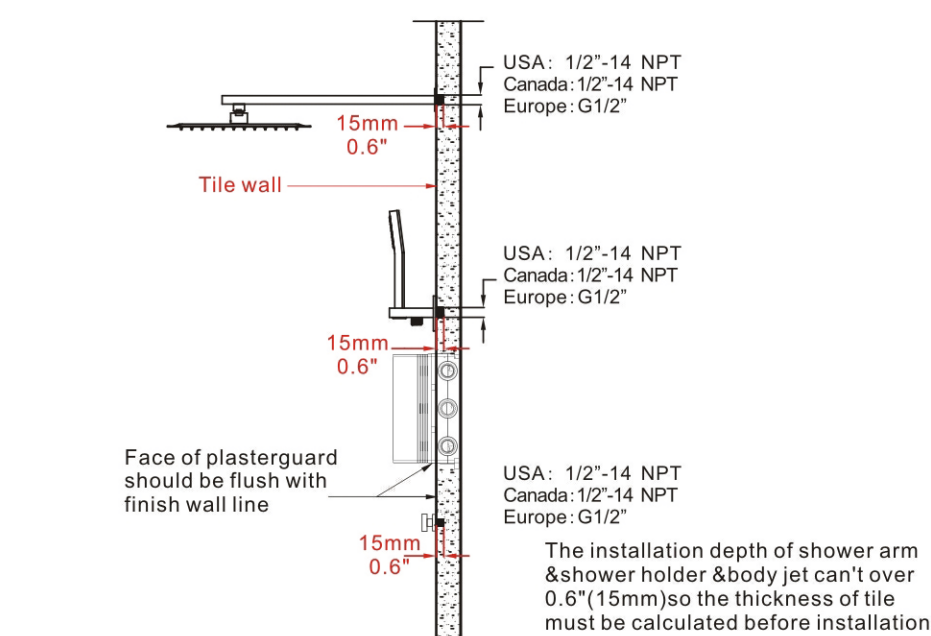


| No. | Part name | Qty | No. | Part name | Qty |
|-----|--------------------|-----|-----|--------------------------|-----|
| 1 | Shower head | 1 | 11 | Handle | 1 |
| 2 | Shower arm | 1 | 12 | Water diverter | 2 |
| 3 | Shower arm cup | 1 | 13 | Body jet cup | 6 |
| 4 | Shower hand | 1 | 14 | Body jet | 6 |
| 5 | Hand show holer | 1 | 15 | Valve gasket spare parts | 4 |
| 6 | Holder cup | 1 | 16 | Handle cover | 1 |
| 7 | Shower hose | 1 | 17 | Screw | 3 |
| 8 | Main body | 1 | 18 | Wrench | 1 |
| 9 | Panel | 1 | 19 | Instruction manual | 1 |
| 10 | Water diverter rod | 2 | 20 | Gloves | 1 |

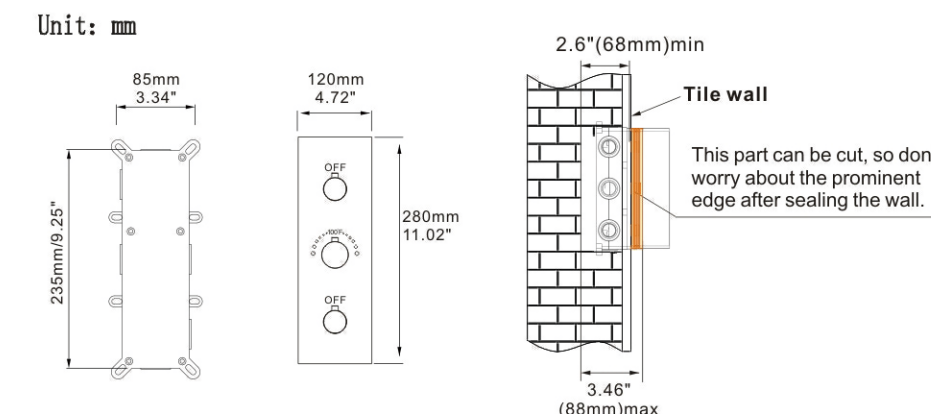
◆ INSTALLATION SHOWER SET SIZE & WATER PIPE LINE REFERENCE



◆ INSTALLATION DEPTH OF SHOWER ARM &SHOWER HOLDER & BODY JET

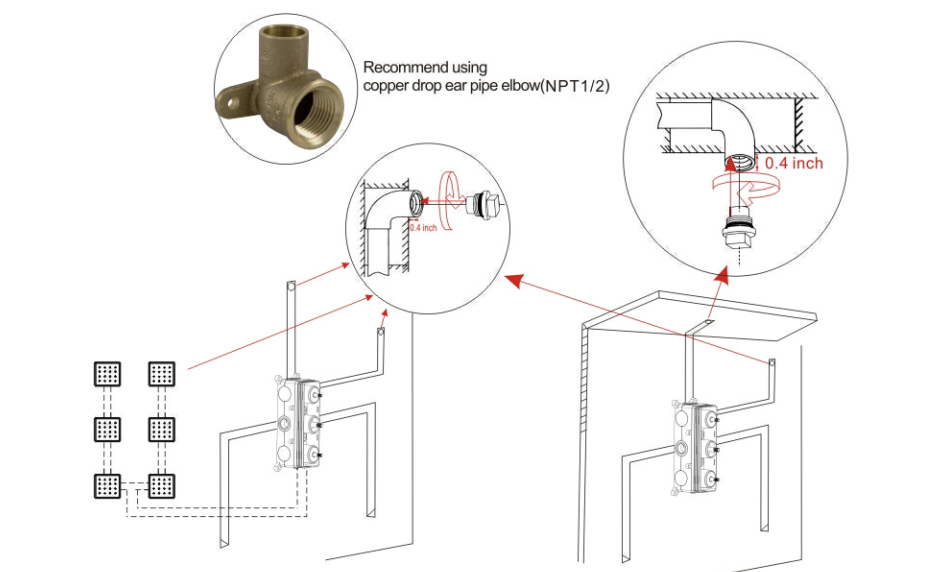


◆ INSTALLATION DEPTH OF MAIN BODY



- 1: Please refer to above for height dimensions of shower installation .
- 2: Including the thickness of ceramic tile is less than or equal to the thickness of valve 3.46\"(88mm), so the thickness of tile must be calculated before installation.
- 3: Installation Main body depth not less than 2.6 \"(68mm)min and not more than 3.46\" (88mm) Max , Otherwise, the panel cannot be installed.

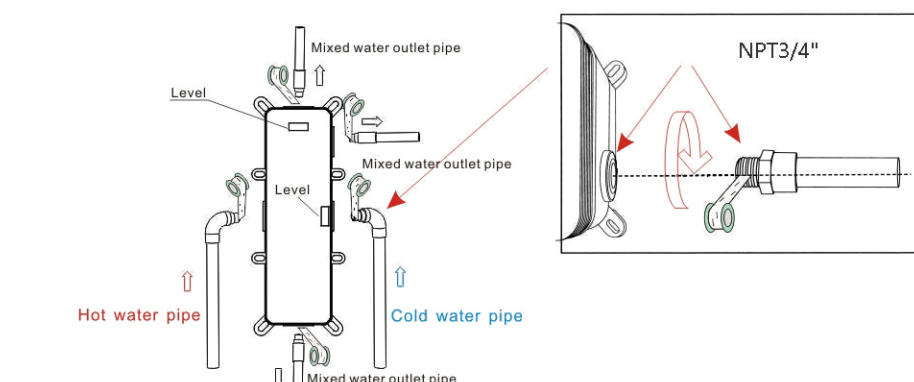
◆ WALL MOUNTED/CEILING MOUNTED INSTALLATION BEFORE TILONG



- 1:Recommend using Copper drop ear pipe elbow(NPT1/2)

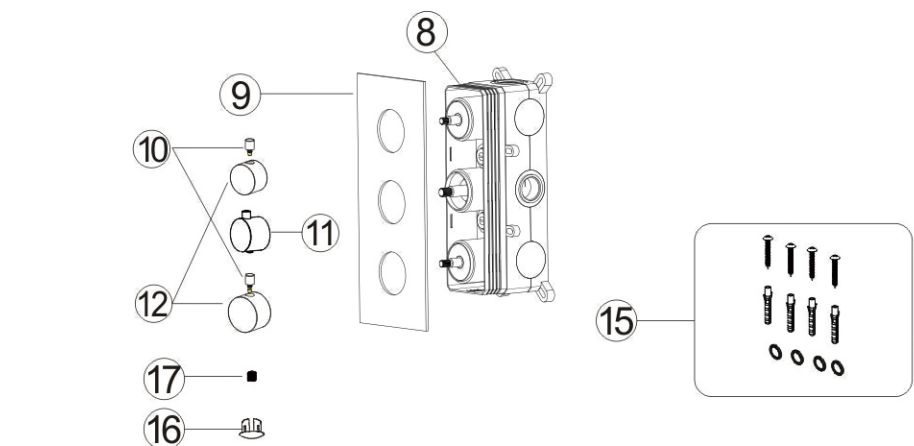
◆ MAIN BODY CONNECTING PIPE SCHEMATIC DIAGRAM

- Warning:must install hot water and cold water inlet strictly as instructions.
- Wrap enough teflon tape



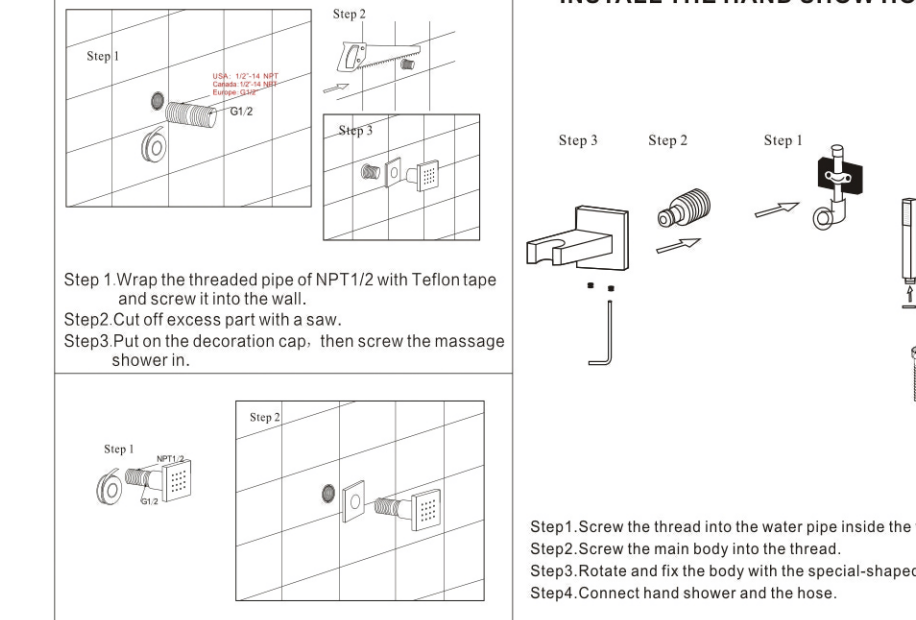
- 1.As shown in the figure, the inlet and outlet pipes are pre-buried,pay attention to the correct direction of installing the pre-buried main body,and make sure that the mark level on the top of the installation box is facing upward.
- 2.Install the hot and cold water inlet pipes,Shower head and hand shower holder body jet pipes. Turn on the water source to test whether the left and right inlet pipes are tightly connected without leakage.After the test,adjust the flow switch to be on to test whether the mixed outlet pipe.The connection is tight and there is no leakage.

◆ MAIN BODY VALVE INSTALLATION

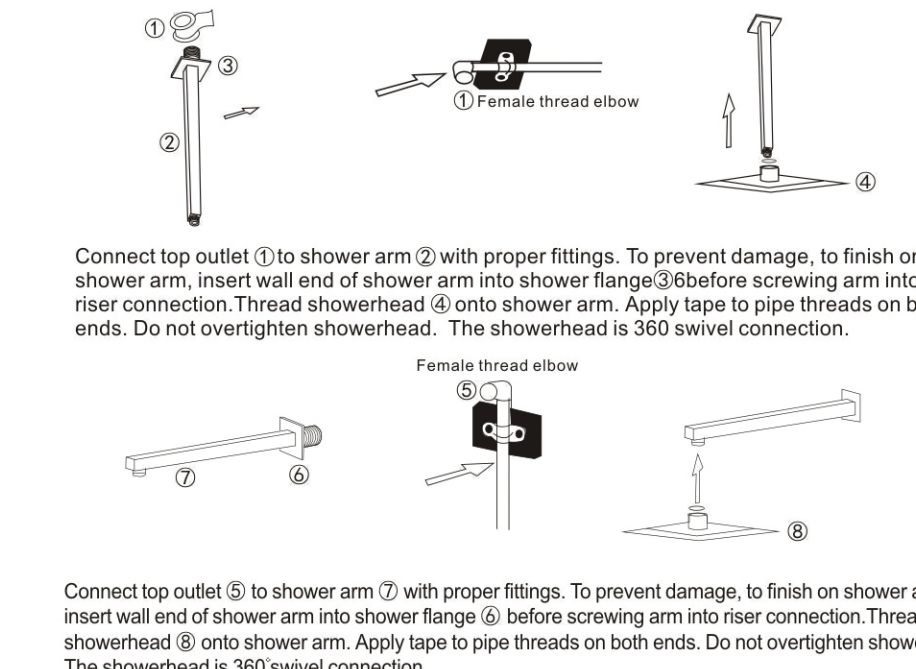


- Use 15 Valve gasket spare parts and to fixed 8 Main body on the wall and then install 9 Panel,Then use 17 3pcs screws respectively to install 11 1pcs hand 10 and 12 2pcs water separation, and finally install the 16 hand cover.

◆ INSTALLATION OF MASSGE SHOWER ◆ SHOWER HOLDER INSTALLATION INSTALL THE HAND SHOW HOLDER



◆ INSTALLATION OF RAIN SHOWER HEAD& SHOWER ARM



◆ CARE AND MAINTENANCE

In order to keep the mixer surface bright , please clean the mixer regularly.

Rinse faucet with clean water and wipe with soft cotton cloth.

Avoid suing cleaning powder , harsh cleaning chemicals, brushes,and cloth with coarse surface to prevent scratching and corrosion.

Do not use acid cleaner to clean the faucet as it may cause surface corrosion of the faucet. If the faucet comes into contact with harmful acid substances, please rinse it with water immediately.

◆ IF A LARGE-SCALE CLEAN-UP IS NECESSARY, FOLLOW THESE PROCEDURES

1:Use clean water and soft cloth to remove dirt on the surface as much as possible.

2:Use one of the following cleaners to remove dirt on the surface

Mild liquid cleaner.

Colorless glass cleaner, powder cleaner which does not have abrasive function and can be dissolved completely.

Polish liquid which does not abrasive function.

3:After cleaning, remove the cleansing agent with clean water completely and wipe with soft cotton cloth.

Website:www.casainc.com
Contact Phone Number:888-257-3857
Service Contact:service@casainc.com