



STYLE SELECTIONS and logo Design are trade marks or registered trademarks of LF, LLC. All rights reserved.

ITEM #5116654

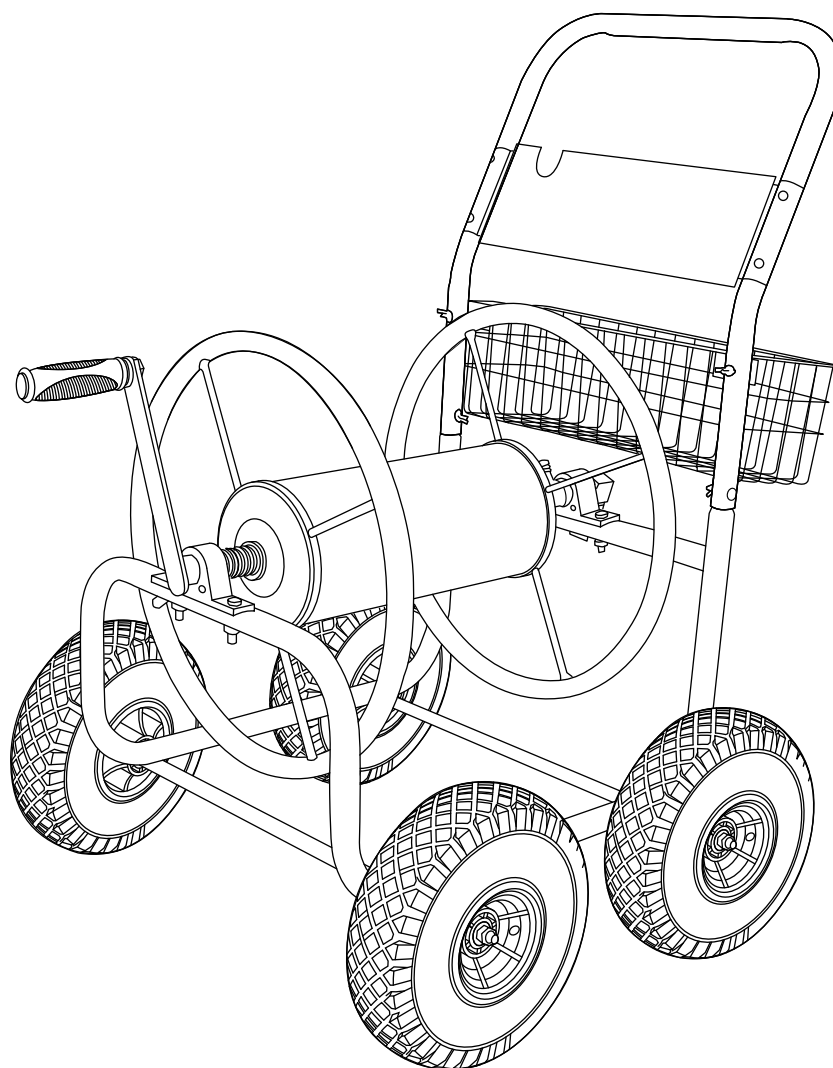
PORTABLE HOSE REEL CART WITH BASKET

MODEL #840-L

English p. 1

Español p. 11

ATTACH YOUR RECEIPT HERE



Serial Number _____ Purchase Date _____



Questions, problems, missing parts? Before returning to your retailer, call our customer service department at 877-888-8225, 8 a.m. - 8 p.m., EST, Monday - Sunday. You could also contact us at partsplus@lowes.com.

AS22343

TABLE OF CONTENTS

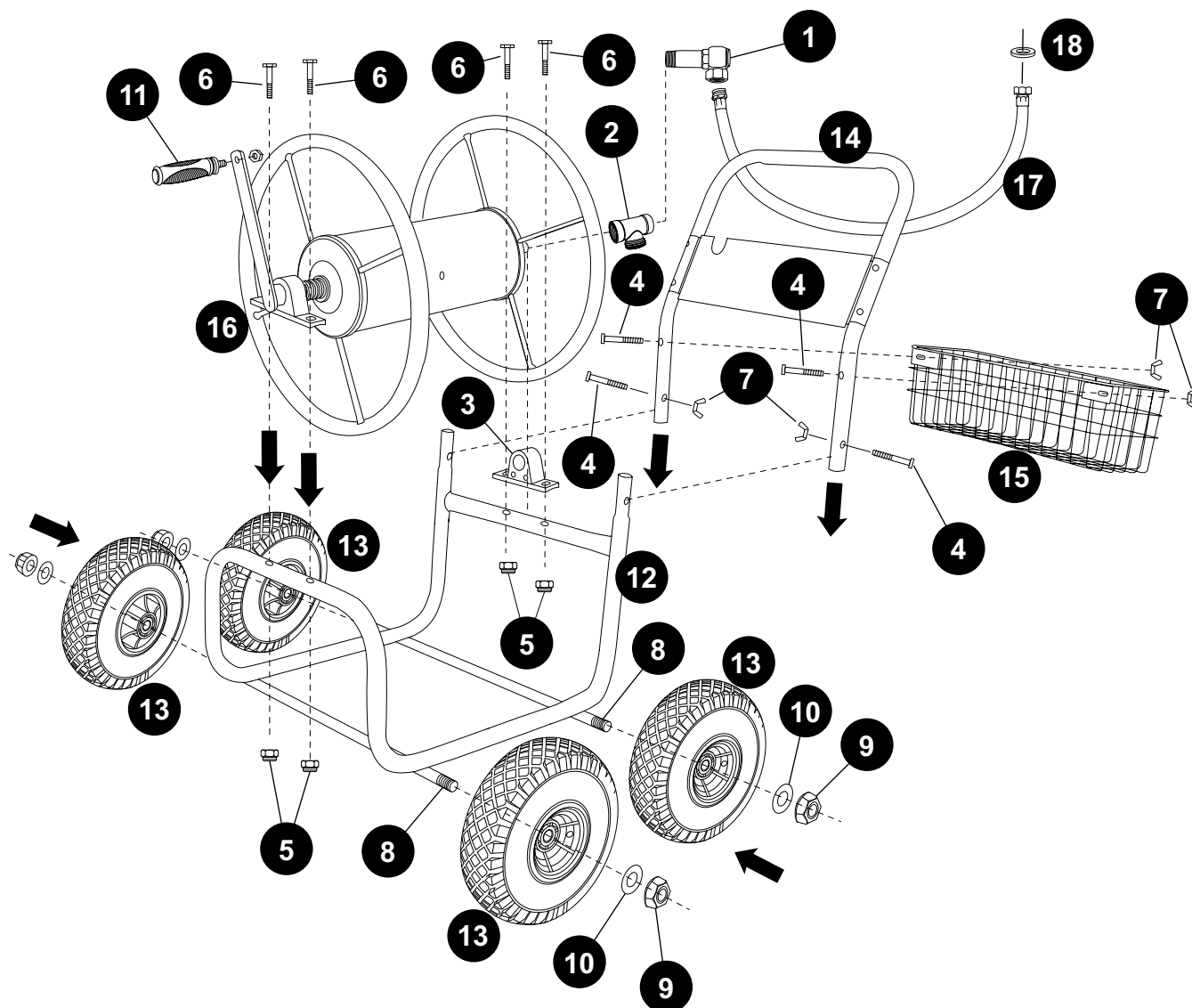
Package Contents.....	3
Hardware Contents.....	4
Safety Information.....	4
Preparation.....	5
Assembly or Installation Instructions.....	6
Care and Maintenance.....	8
Troubleshooting.....	9
Warranty.....	9
Replacement Parts List.....	10

PRODUCT SPECIFICATIONS

SPECIFICATIONS
250' of 5/8" Hose Capacity
19 Gauge Steel Construction
5' Leader Hose
All Brass Fixtures
90° Brass Swivel Connector
Four 10" Flat Free Tires
Durable Powder Coat Finish

SPECIFICATIONS
Low Center of Gravity Prevents Tipping
Color: Gray
Height: 37"
Width: 24"
Depth: 33"
Weight: 34.00 lbs
Made In: China

PACKAGE CONTENTS

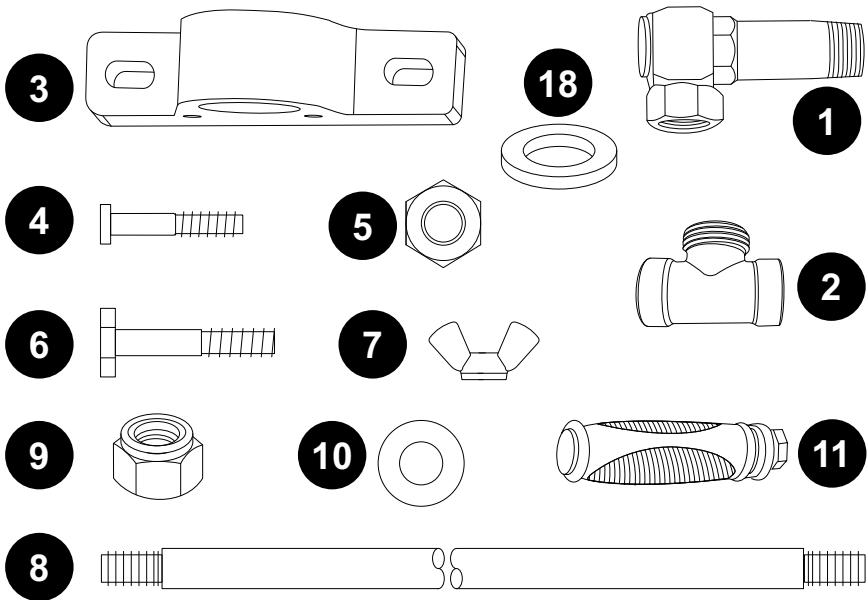


PART	DESCRIPTION	QUANTITY
1	Brass Swivel	1
2	Brass Tee	1
3	U-Bushing	1
4	M6 x 1.57" Bolt	4
5	Lock Nut	4
6	M8 x 1.75" Bolt	4
7	Wing Nut	4
8	Wheel Axle	2
9	Axle Nut	4
10	Axle Washer	4

PART	DESCRIPTION	QUANTITY
11	Rubber Handle With Nut	1
12	Frame	1
13	Flat-Free Tires	4
14	U-Handle	1
15	Basket	1
16	Spool With Handle	1
17	Leader Hose	1
18	Rubber O-Ring	1
19	Adjustable Wrench (Not Included)	2

HARDWARE CONTENTS (Drawings are not to scale)

The hardware displayed below is included with the product.





SAFETY INFORMATION

Please read and understand this entire manual before attempting to assemble, operate or install the product.

- **READ ALL INSTRUCTIONS CAREFULLY AND BE SURE THEY ARE FULLY UNDERSTOOD BEFORE USING THE HOSE CART.**

- Do not load more than 250' (76.2 m) of hose onto the cart.
- Distribute the hose evenly over the surface of the drum assembly.
- If any parts become damaged, broken, or misplaced, do not use the hose cart until the parts have been repaired or replaced.
- Do not use the hose cart on surfaces that can cause damage to the wheels.
- It is recommended that the hose cart be inspected for damage before each use.
- **KEEP THESE INSTRUCTIONS FOR FUTURE REFERENCE.**



WARNING

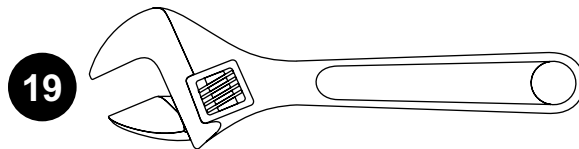
This product contains one or more chemicals known in the state of California to cause cancer and birth defects or reproductive harm. Wash hands after handling.

PREPARATION

Before beginning assembly of product, make sure all parts are present. Compare parts with package contents list and hardware contents list. If any part is missing or damaged, do not attempt to assemble the product.

Estimated Assembly Time: 30 minutes.

Tools required for assembly (not included):

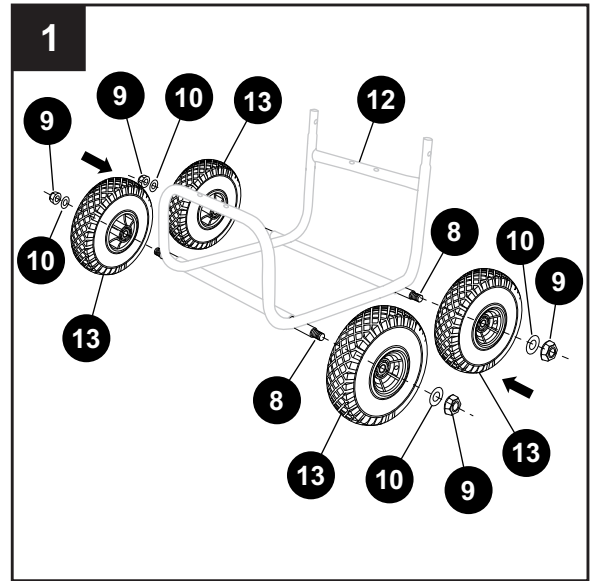
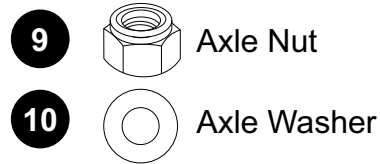


Adjustable Wrench x 2

ASSEMBLY INSTRUCTIONS

STEP 1:

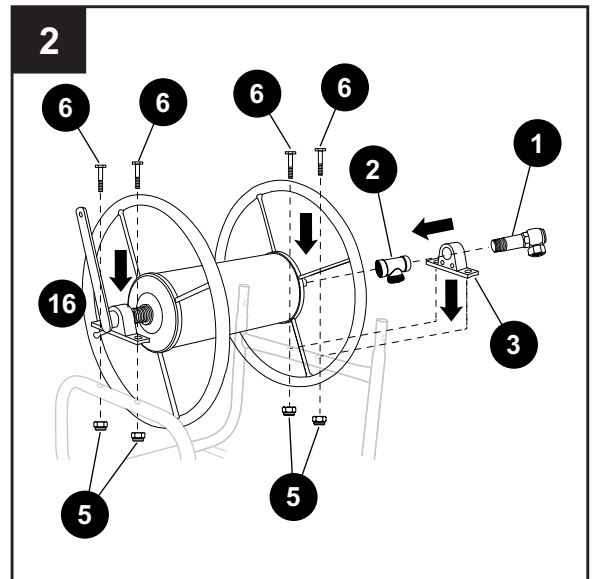
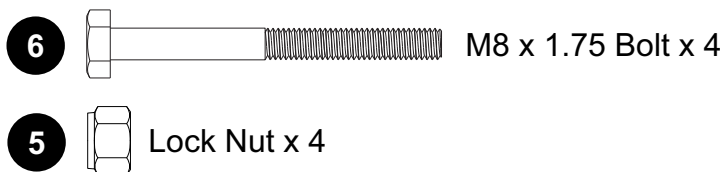
Locate the frame (12) and place it on a flat surface. Insert the wheel axles (8) through the frame (12) and into the tires (13), as shown. Slide the washers (10) onto the wheel axles, followed by the axle nuts (9). Tighten axle nuts using two adjustable wrenches (19).



STEP 2:

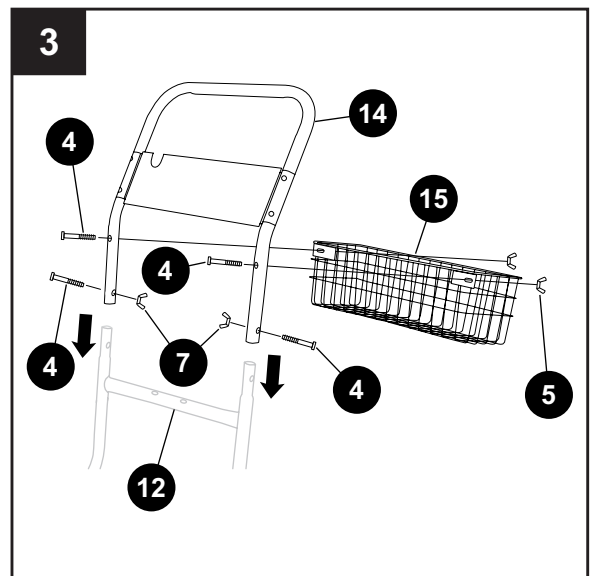
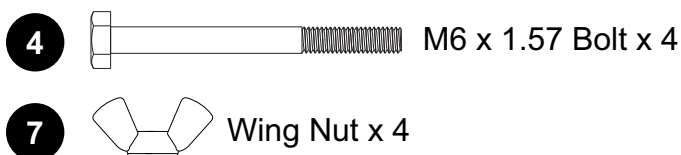
Insert the brass swivel (1) through U-Bushing (3) and into the brass tee (2), then tighten securely. Screw the brass tee onto the end of the spool (16). Set spool onto the frame, then align the U-Bushing holes with the holes in the frame. Insert the 1.75" bolts (6) through the U-Bushing and frame holes, then fasten the lock nuts (5) onto the 1.75" bolts.

WARNING: Do not overtighten brass swivel in order to provide an optimal seal.



STEP 3:

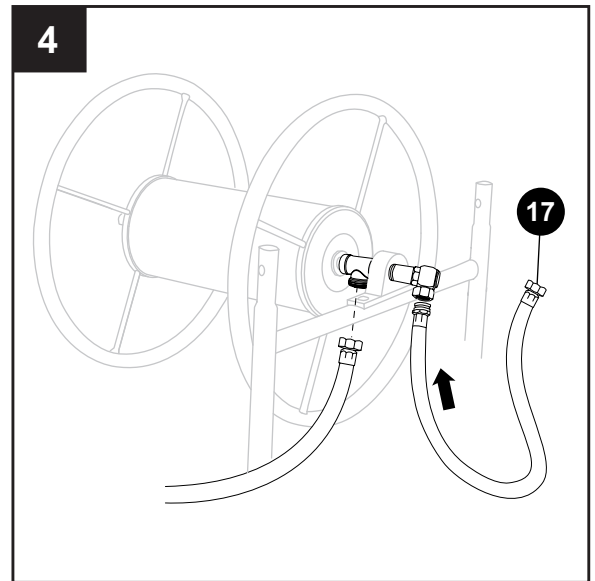
Slide U-handle (14) onto the frame (12). Align the holes at the bottom of the U-handle with holes in the frame, then insert 1.57" bolts (4) through the holes. Screw wing nuts (7) onto bolts. Next, align the holes in basket (15) with holes at top of the U-handle, then insert 1.57" bolts (4) through the holes; tighten wing nuts (7) securely.



ASSEMBLY INSTRUCTIONS

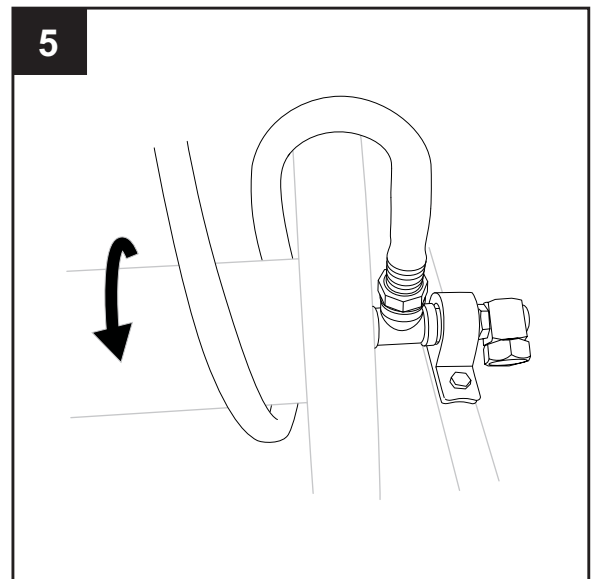
STEP 4:

Attach the leader hose (17) to the brass swivel.



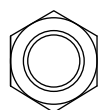
STEP 5:

Attach your garden hose to the brass adapter on the brass tee. Loop the hose over the spool end, as shown.

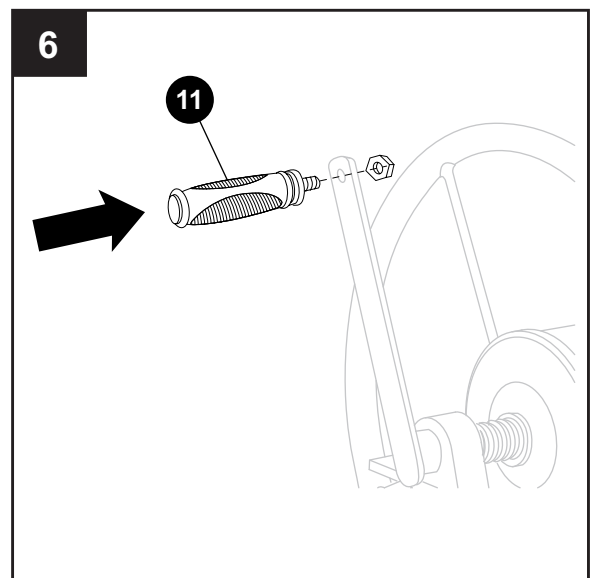


STEP 6:

Attach the rubber handle (11) to the crank handle using the handle bolt and nut, then tighten securely.



Nut x 1



CARE AND MAINTENANCE

Rust

Your hose reel will give you many seasons of reliable and functional hose storage. As with any steel product, there is always the chance for rust developing over time. Your hose reel finish is designed for industrial applications, but even the toughest of coatings can be compromised by scratches. Such minor surface damage can occur in shipping despite our best efforts. We have found that most scratches occur during assembly and/or installation. If the base metal is exposed to the elements long enough, rust will develop. We recommend that you periodically inspect your reel for any surface damage. Scratches can easily be repaired by using standard automotive touch-up body paint. Some of our most loyal customers recommend that at the end of each season, the unit be cleaned and painted with a clear acrylic paint. Two other sources of rust acceleration is exposing the reel to yard fertilizers or leaving your hose reel standing in grass. Be sure to rinse off your hose reel after it comes in contact with freshly fertilized grass. Also, try to park your hose reel on solid ground. Leaving it standing on top of vegetation promotes condensation on the undercarriage of the unit.

Leaks

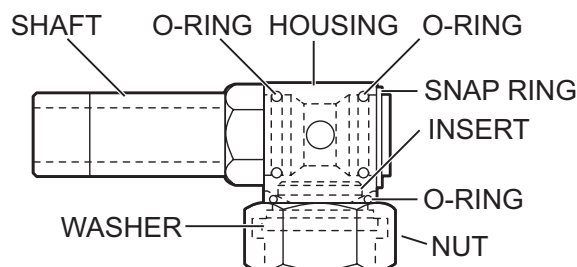
Your hose reel is manufactured with the finest quality components available. All components are manufactured to rigorous quality standards not common in other consumer grade hose reels available today. When you install your hose reel, be sure the hose washers are in place and all fittings are secure. **DO NOT OVER TIGHTEN** as you might damage the components. If you live in more temperate climates, be sure to drain the unit of any residual water before storing. **DO NOT EXPOSE THE UNIT TO FREEZING TEMPERATURES** while water remains in the plumbing system.

TROUBLESHOOTING

Problem: Your new hose cart is leaking at the swivel.

Solution: It is normal for the swivel to leak slightly until the O-Rings are wet and have seated. If the leaking continues, you do not need to take the cart back to the store. This is a simple problem and is easily fixed by the following procedure.

1. If the leader hose is attached to the swivel, unscrew the hose and look inside the swivel.
2. Using either a hex key or a large screw driver, insert the tool into the hex opening and gently tighten the threaded insert. **DO NOT OVERTIGHTEN!**
3. This should stop the leaking.
4. If the unit still leaks, please check that the hose washer is inside the nut. You may contact Lowes for a new hose washer or obtain one at any local hardware store.
5. If the swivel is old, the O-Ring may be worn, please contact us for a new set of O-Rings.
6. If these steps do not solve the leak problem, contact Lowes.



TROUBLESHOOTING (continued)

Problem: Swivel head is not rotating, causing the leader hose to kink up.

Solution: Remove leader hose and turn the square head of the swivel several times; apply lubricant.

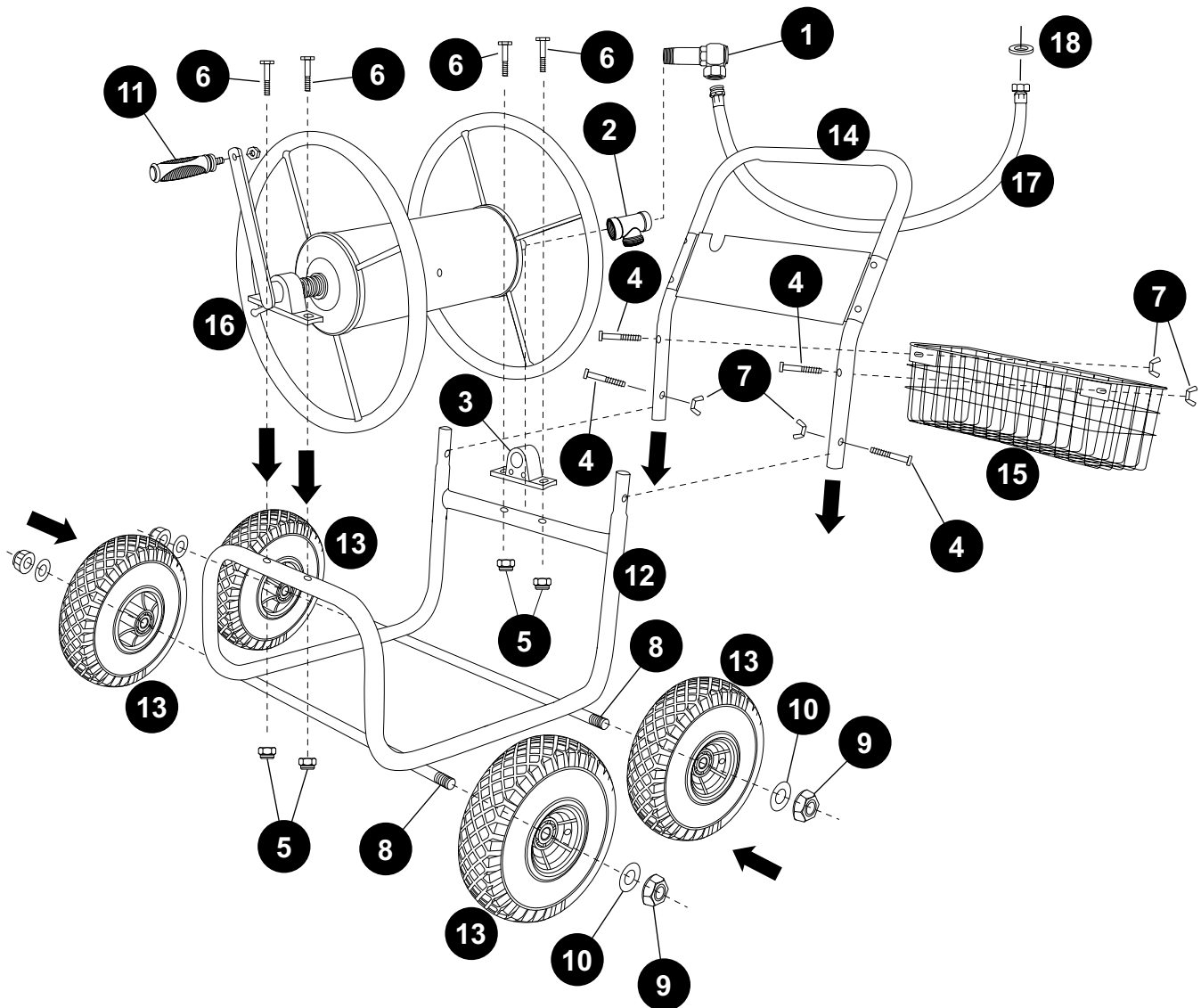
Problem: Leaking Fixtures (brass tee; brass coupling; swivel) **Solution:** Apply Teflon/Plummer's Tape or/and make sure fixtures are tightened.

WARRANTY

This Lowes product carries a (3) year warranty against defects in workmanship and materials. Instances of normal wear and tear, damage caused by abuse, misuse, alteration or failure to follow instructions or proper maintenance protocols are not covered. Company warrants solely to the original Customer that (a) the Structural Frame will be free from defects in materials and workmanship under normal use for a period of three (3) YEAR(S) from the date of original retail purchase, and (b) the Non-Frame Parts (which consist of the crank handle, swivel and water connections, leader hose and tires), will be free from defects in materials and workmanship under normal use for a period of ONE (1) YEARS from the date of original retail purchase. Notwithstanding the foregoing, the colors and finishes of the Products may vary within a reasonable scope due to unavoidable color variations in different production batches, and such variations shall not constitute a material defect. This limited warranty is limited solely to the original Customer with proof of purchase and is not transferable.

REPLACEMENT PARTS LIST

For replacement parts, call our customer service department at 1-877-888-8225, 8 a.m. - 8 p.m., EST, Monday - Sunday. You may also contact us at www.partsplus@lowes.com.



PART	DESCRIPTION	PART #
A	Brass Swivel	840-L-1
B	Brass Tee	840-L-2
C	U-Bushing	840-L-3
D	M6 x 1.57" Bolt	840-L-4
E	Lock Nut	840-L-5
F	M6 x 1.75" Bolt	840-L-6
G	Wing Nut	840-L-7
H	Wheel Axle	840-L-8
I	Axle Nut	840-L-9

PART	DESCRIPTION	PART #
J	Axle Washer	840-L-10
K	Rubber Handle With Nut	840-L-11
L	Frame	840-L-12
M	Flat-Free Tires	840-L-13
N	U-Handle	840-L-14
O	Basket	840-L-15
P	Spool With Handle	840-L-16
Q	Leader Hose	840-L-17
R	Rubber O-Ring	840-L-18