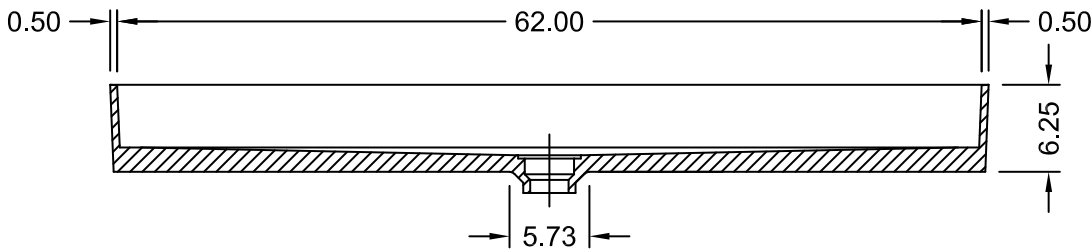
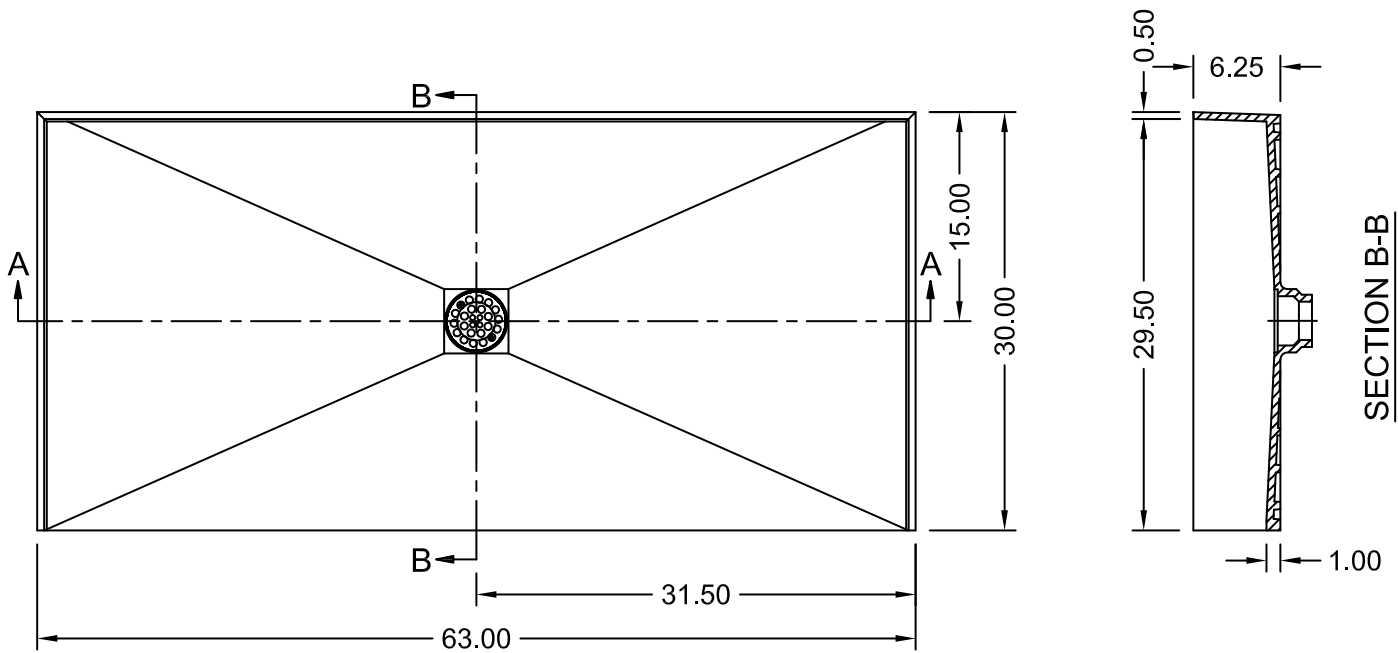


(Not to scale)



SECTION A-A

Redi Free Installation: For a proper barrier free pan installation, subfloor must be recessed to the depth of the front lip of pan in accordance with local codes.



ANSI Z124.1-95
ANSI Z124.2-95
ICC/ANSI A117.1.98

ASTM F462-79
B45.0-02
B45.5-02

Toll Free 800.232.6156
Tel: 954.323.0125
Fax: 954.344.8064

techsupport@tileredi.com

www.tileredi.com

**tile
redi**[®]
Perfection through Innovation

2016.06.21