

Installation Guide

SMART TOILET



Prior to Unpacking



- Overall package weighs about 100 pounds! Two people are required to carefully unpack the product to avoid personal injuries or accidental damage to the item.
- Each item is carefully packed in customized foam. However, violent handling and shipping might crack the item. Observe potential damage while unpacking.
- The seat cover might not be hinged firmly with the toilet base. DO NOT lift the toilet by grabbing the separate seat.



TEAM LIFT



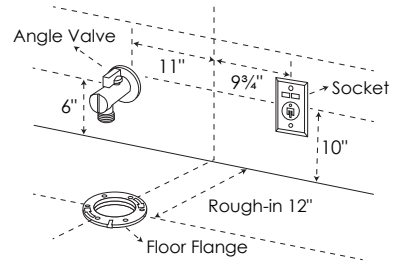
FRAGILE

Prior to Installation



- Inspect the toilet to ensure no damages during transit.
- Observe all plumbing and building codes in accordance with your state and local requirements.
- All dimensions are nominal. Actual size of item received might vary by up to 1/8 inch. Make sure to measure your toilet before installation.
- The step-by-step guide in the installation instructions is for general reference only. Should there be any discrepancies, Eridanus cannot be held liable. It is recommended that all Eridanus products be installed by a licensed professional.
- Read installation and maintenance instructions and user manual thoroughly before installing. Be sure to use proper tools and always wear proper personal safety equipment.
- Two people are required to handle and install the toilet to avoid personal injuries or accidental damage to the item.
- Diagrams are for general display and do not represent a specific model.
- Make sure water pressure meets the minimum requirement for your model.
- This appliance must be grounded. Connect only to a circuit protected by a Ground-Fault Circuit-Interrupter(GFCI) or Residual Current Device(RCD).

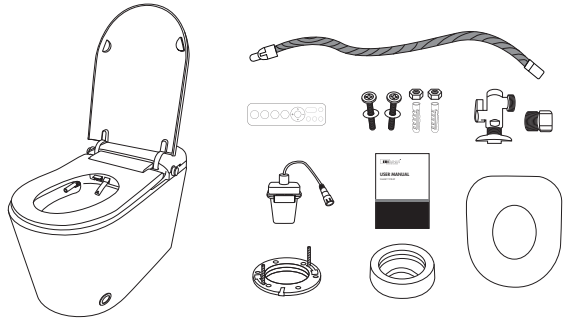
- Confirm that the item received will fit in the intended location and that plumbing fixtures are located where legally required before installation begins.



Checklist

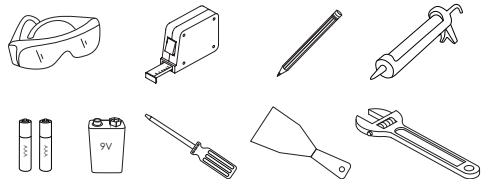
• What's in the box

- ☐ a. Smart Toilet
- ☐ b. Angle Valve
- ☐ c. Adapter
- ☐ d. Wax Ring Gasket
- ☐ e. Flange
- ☐ f. Mounting Bolts
- ☐ g. Remote Control
- ☐ h. Toddler Seat
- ☐ i. Supply Line/Hose
- ☐ j. Battery Box
- ☐ k. User Manual
- ☐ l. Installation Guide



• Extra Parts/Tools Required

- ☐ i. Safety Glass
- ☐ ii. Tape Measure
- ☐ iii. Screwdriver
- ☐ iv. Adjustable Wrench
- ☐ v. Putty Scraper
- ☐ vi. Pencil/Marker
- ☐ vii. Caulk
- ☐ viii. AAA Battery x2
- ☐ ix. 9V Battery



- ☐ x. Paper Towels
- ☐ xi. Disposable Gloves
- ☐ xii. Bucket
- ☐ xiii. Level
- ☐ xiv. Drill
- ☐ xv. Soft Cloth/Tarp



NOTE Other tools might be required during installation.

Installation

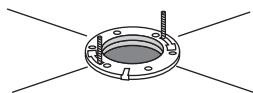
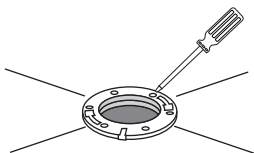


Install Closet Flange & Bolts

- Inspect existing closet flange. Replace it if necessary.

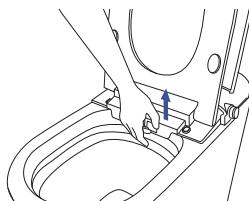
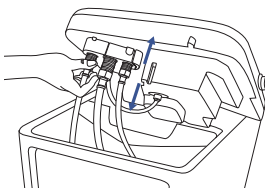
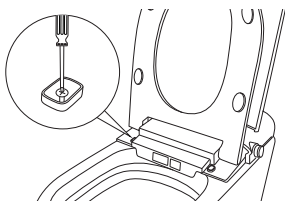


REMINDER When replacing the flange, always remember to lock the nuts into position to prevent the toilet from shifting over time and damaging the wax seal.



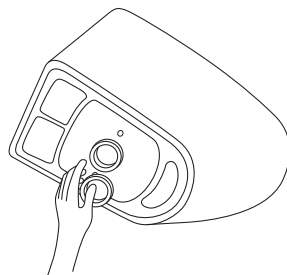
Remove Bidet Assembly

- Unscrew the two screws located on the bidet, disconnect the hose and wire, and then remove the bidet.



Apply Wax Gasket and Sealant

- With assistance, carefully turn the toilet on its side.
- Attach the wax ring gasket evenly around the rear of the trapway.
- Apply a thin bead of sealant around the toilet base.



REMINDER Consider placing a tarp over the floor for surface protection.

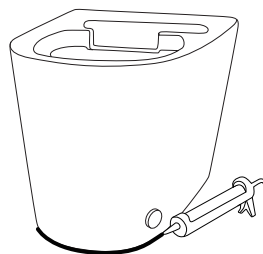
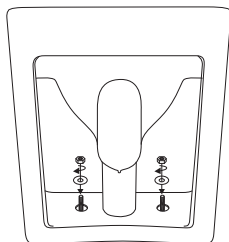
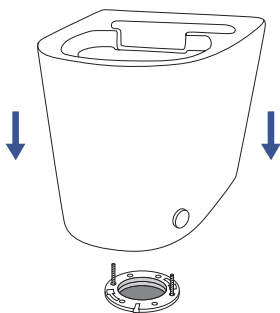
Install Toilet Bowl

- Gently lower the toilet bowl over the floor flange ensuring that the closet bolts extend through the pre-drilled holes.
- Align the toilet squarely against the wall, then firmly press down on the wax ring and flange to establish a waterproof seal. Tighten the washers and nuts alternately until the toilet is securely positioned on the floor.



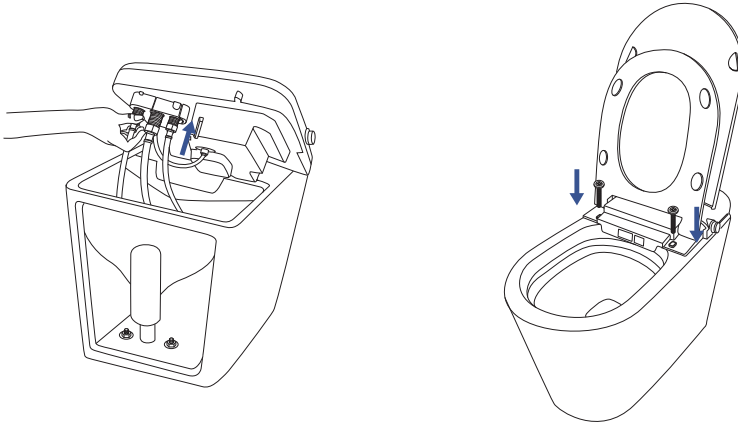
REMINDER Avoid over-tightening as it could potentially cause the ceramics to crack.

- Apply a smooth layer of sealant around the base. Remove any excess sealant.



Reinstall Bidet Assembly

- Put the bidet in position on the toilet bowl. Reconnect the hose and wire.
- Securely fasten the bidet to the toilet bowl by tightening the two screws.



Check for Leaks and Flush Function

- Connect the supply line/hose to the angle valve.
- Insert the toilet's plug into the power outlet/socket.
- Flush test. Make sure there is no leak from the waterline or the flange.
- Refer to the user manual to check if the smart toilet is operating properly.

Installation Guide

COPYRIGHT 2024 ERIDANUS