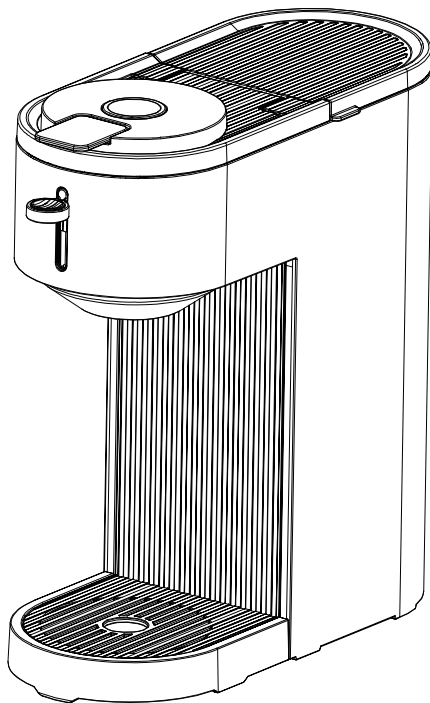


INSTRUCTION MANUAL

COFFEE MAKER



Model No.: CM9440-UL

Item No.: CM3740-BLACK-CS

CM3740-BLACK



This product contains Silicon, Aluminum, Stainless steel(Iron, Chromium, Nickel, Manganese and Phosphorous.)

For more information about chemicals in this product, visit website: <https://cowsarofficial.com/>

Este producto contiene Silicon, Aluminio, Acero inoxidable(Hierro, Cromo, Niquel, Manganese, Fosforo).

Para obtener más información sobre los productos químicos de este producto, visite <https://cowsarofficial.com/>

IMPORTANT SAFEGUARDS

When using electrical appliances, basic precautions should always be followed, including the following:

1. Read all Instructions.
2. Before using check that the voltage power corresponds to the one shown on the appliance nameplate.
3. Do not operate any appliance with a damaged cord or plug or after the appliance malfunctions, or has been damaged in any manner. Return appliance to the nearest authorized service facility for examination, repair or adjustment.
4. Do not touch hot surfaces. Use handles or knobs.
5. All the accessories must be complete and in good condition.
6. To protect against fire, electric shock and injury to persons do not immerse cord, plug, or in water or other liquid.
7. Close supervision is necessary when any appliance is used by or near children.
8. Unplug from outlet when not in use and before cleaning. Allow to cool before putting on or taking off parts, and before cleaning the appliance.
9. The use of accessory not recommended by the appliance manufacturer may result in fire, electric shock or injury to persons.
10. Do not use outdoors or for commercial purpose.
11. Do not let cord hang over edge of table or counter, or touch hot surface.
12. Do not place on or near a hot gas or electric burner, or in a heated oven.
13. Do not use appliance for other than intended use.
14. Do not set a hot container on a hot or cold surface.
15. To disconnect, turn any control to “OFF”, remove plug from wall outlet. Always hold the plug. But never pull the cord.
16. The appliance can be only operated on a hard and flat surface.
17. Before connecting the power supply of this appliance, please make sure that the water tank is always tightly installed on the appliance and its cover must be tightly covered, and the water filled cannot be higher than the “MAX” mark.
18. When brewing coffee, do not remove the water tank and open the water tank lid as

well as keep your hand, head, face and body away from the coffee outlet in order to avoid personal injury and product damage caused by steam and hot water. Make sure that the coffee cup is removed after the coffee-brewing is finished.

19. This appliance is not intended for used by persons (including children) with reduced physical, sensory or mental capabilities, or lack of experience and knowledge, unless they have been given supervision or instruction concerning use of the appliances by a person responsible for their safety.

20. Children should be supervised to ensure that they do not play with the appliance.

21. Scalding may occur if the lid is removed during the brewing cycles.

22. Only use capsules intended for this appliance. If the capsule does not fit, do not force the capsule into the appliance.

23. **WARNING:** To avoid the risk of injury, do not open the brew chamber during the brew process.

24. **WARNING:** Risk of Fire or Electric Shock. Do not remove this cover. No user serviceable parts inside. Repair should be done by authorized service personnel only.

SAVE THESE INSTRUCTIONS

HOUSEHOLD USE ONLY

NOTES ON THE CORD PLUG:

This appliance has a polarized plug. To reduce the risk of electric shock, this plug is intended to fit into a polarized outlet only one way. If the plug does not fit fully into the outlet, reverse the plug. If it still does not fit, contact a qualified electrician. Do not attempt to modify the plugin anyway.

NOTES ON THE POWER CORD:

a) A short power-supply cord (or detachable power-supply cord) is provided to reduce risks resulting from becoming entangled in or tripping over a longer cord.

b) Longer detachable power-supply cords or extension cords are available and maybe used if care is exercised in their use.

c) If a long detachable power-supply cord or extension cord is used:

-
- 1) The marked electrical rating of the detachable power-supply cord or extension cord should be at least as great as the electrical rating of the appliance;
 - 2) If the appliance is of the grounded type, the extension cord should be a grounding type 3-wire cord;
 - 3) The longer cord should be arranged so that it will not drape over the counter top or table top where it can be pulled on by children or tripped over.

CAUTION: STEAM

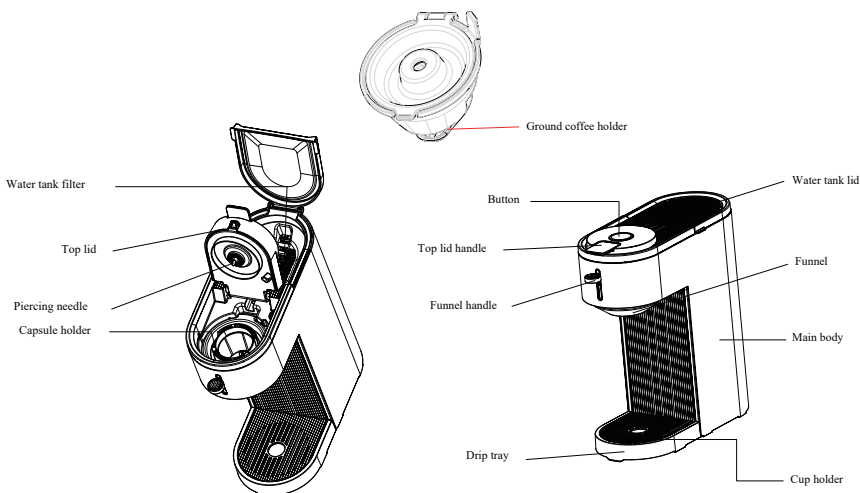
To avoid personal injury and product damage caused by steam and hot water, do not remove the water tank and open the top lid, and keep the human body away from the coffee outlet while brewing coffee. Please make sure the program is finished before moving the coffee cup.

PROPER USE OF COFFEE MACHINE

Please use regular coffee machine capsules and coffee powder.

To keep the appliance be in good working condition, we recommend that the appliance should be descaled regularly. Please contact our service center for details on how to do this.

KNOW YOUR COFFEE MACHINE



BEFORE USING THE APPLIANCE FOR THE FIRST TIME

Clean the appliance for optimum operating condition before first use.

Please refer to the section of “**KNOW YOUR COFFEE MACHINE**” to learn about this appliance and recognize all parts.

1. Remove the stickers and labels from the appliance.
2. Remove the capsule holder or ground coffee holder, and then put them into the clean water with mild detergent. Clean each part thoroughly and then install them back into the appliance.

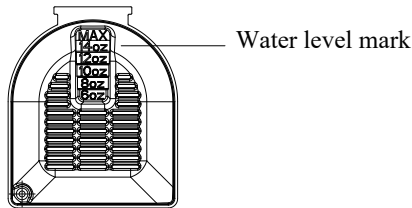
Prepare The Right Cup

1. The funnel can be adjusted in height for accommodating cups with different heights.
2. Description for the funnel with adjustable height:

When a short cup is selected for brewing coffee, you can grasp the funnel handle and push it downwards to make the funnel move downwards so as to make the coffee outlet be closer to the coffee cup. When a tall travel cup is selected for brewing coffee, you can grasp the funnel handle and push it upwards to make it go back to its original position.

Filling Water Tank

1. When filling the water tank, you can use a bottle or cup to get water under the tap and then pour the water into the water tank. Please make sure that the water in the water tank does not exceed the “MAX-14oz(414.4ml)” mark on the water tank.



NOTE: Make sure the water tank is filled with 6-14oz of water to ensure there is enough water in the water tank.

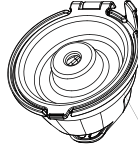
2. Close the water tank lid.

NOTE: Make sure the water tank lid is closed well in position to prevent hot water splashing during coffee-brewing process.

OPERATION INSTRUCTION



Capsule holder



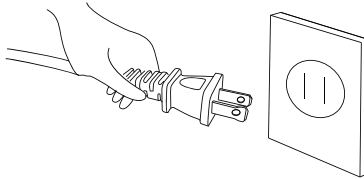
Ground coffee holder

1. If need to brew coffee with coffee capsule, place a capsule into the capsule holder. If you need to brew coffee with coffee powder, add coffee powder into the ground coffee holder (Do not exceed the Max line) and close the holder lid. Press the top lid handle upward to open the top lid and put the holder into the holder compartment in position, then close the top lid.

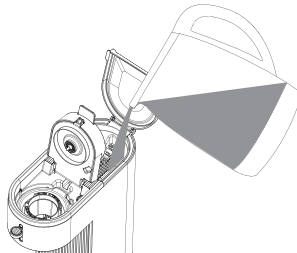
NOTE: Make sure the top lid is closed well in position and the bottom of the capsule is punctured.

NOTE: Do not add ground coffee exceed the MAX mark in the ground coffee filter.

WARNING: Take caution not to cut your hand on the capsule piercing needles.



2. Connect the appliance with the proper power source, the appliance enters into the standby mode.



3. Fill the water tank with water by following the operation of “**Filling Water Tank**”.

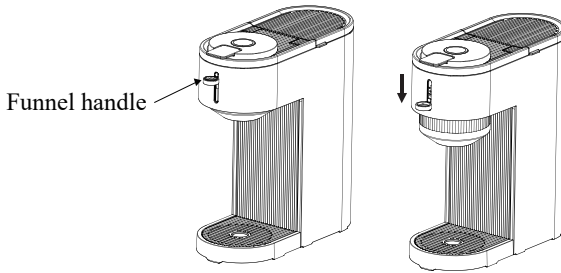
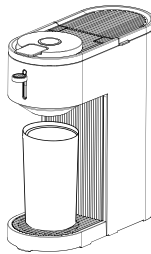


Illustration for pushing the funnel handle downwards

4. Place the right cup onto the cup holder to hold the coffee by following the operation of “**Prepare The Right Cup**”.

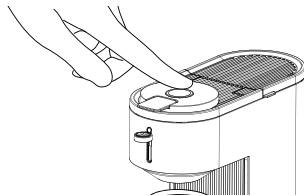
5. Long press the button, the machine will directly brew without heating.



6. Press the button, the machine starts to heat, the button flashes white light. After about 2 minutes, the machine will start to brew hot coffee.

NOTE: Excessive caution should be taken when the machine is working.

NOTE: The machine will keep working until the water tank is empty. Make sure that the amount of water you add to the tank is no more than the volume of your cup.



7. When the machine is working, you can press the button again to stop the brewing anytime.

NOTE: After pressing the button, the machine will keep brewing for about 3 seconds. Please pay attention to it to avoid spilling, or even scalding.

CLEANING AND MAINTENANCE

Clean The Appliance

1. Wipe the housing with a piece of soft wet cloth. Do not use abrasive cleaning agent or cleaning cloth because they will scratch the surface finish.
2. Detachable parts such as capsule holder and ground coffee holder can be rinsed with water directly.
3. After brewing coffee, it is recommended to clean the piercing needle to prevent the coffee powder remained on the inner hole wall of the piercing needle affecting the normal use of piercing needle. Please be careful during cleaning to avoid any hurt to hands.
4. The cup holder can be removed for cleaning. Replace the cup holder well in position after finish cleaning.

NOTE: Do not immerse the appliance in water.

DESCALING

Minerals deposited in this product will affect the operating performance of the appliance. When you find that it need to take more time to make coffee or there is too much steam, you must perform descaling in time. In addition, you may find that there is white deposits on the surface of the piercing needle.

The frequency of cleaning depends on the hardness of the water. The recommended cleaning intervals are listed in the table below.

Recommended Cleaning Interval	
Soft water (filtered water)	Every 150 coffee-brewing cycles
Hard water (Tap water)	Every 100 coffee-brewing cycles

The coffee machine should be cleaned at least once every 1-2 weeks for the area with hard water.

1. Connect the appliance with power source.
2. Dissolve 0.7oz (20g) citric acid in clean water and add the solution into the water tank to the maximum mark (14oz).
3. Place a cup on the cup holder and then press the button.
4. Empty and rinse the cup after the brewing cycle is completed.
5. Run two or more cycles with clean water to flush the equipment thoroughly.
6. Unplug the power plug.
7. After finish cleaning, the appliance is ready for brewing coffee.

NOTE: Do not immerse the appliance in water.

TROUBLE SHOOTING

Problem	Cause	Solution
Water flows out of the funnel when filling the water tank with water.	The water amount exceed the maximum level of the water tank.	The water in the water tank should be between the minimum and maximum level.

The metal parts in the water tank are of rust.	The detergent used is not the type recommended. It may corrode the metal parts in the water tank.	Use the detergent recommended by the manufacturer.
Water leakage is found at the bottom of the appliance.	There is too much waste water in the drip tray.	Empty the wastewater in the drip tray.
	There is malfunction found in the coffee machine.	Contact the local service agent for maintenance.
Water leakage found at the outer side of the funnel when brewing coffee.	There is some coffee powder at the edge of filter, which makes the coffee powder not be tamped tightly.	Remove the coffee powder at the edge of filter and then tamp the coffee powder tightly.
	The top lid has not been closed well in position.	Close the top lid well in position.
Acid (vinegar) taste exists in coffee.	The appliance has not been cleaned correctly.	Clean the coffee machine for several times with clean water to flush the machine thoroughly.
The brewed coffee tastes bad.	The coffee powder is stored at a hot, wet place for a long time. The coffee powder turns bad.	Please use fresh coffee powder, or store unused coffee powder at a cool, dry place. After the coffee powder is unpacked, reseal it tightly and store it in a refrigerator to maintain its freshness.
The coffee machine cannot work.	The power outlet is not plugged well.	Plug the power cord into a wall outlet correctly, if the appliance still does not work, please contact with the authorized service facility for repairing.
	The top lid has not been closed well in position.	Close the top lid well in position.
After pressing down the button, no water is dispensed.	The water tank is not filled with water.	Fill the water tank with the water required.

The coffee machine does not dispense water or little water is dispensed.	The piercing needle is blocked by coffee powder.	Clean the piercing needle hole with a needle, please be careful not to be hurt.
	There is scale found in the water pump.	Add citric acid for descaling.
	The coffee machine is malfunctioned.	Please contact with the authorized service facility for repairing.

Do not disassemble the appliance by yourself if the cause of failure is not found, you had better contact the authorized service center.

Thank you for purchasing this product! If you have any question about the product, such as missing parts, damaged products, product assembling, and operation, please contact us via customer service number: **661-435-8826 or 818-468-1528.**

IMPORTANT

Please call our customer service department for any consulting:

661-435-8826

818-468-1528

(8:30am - 5:30pm P.S.T.)

DATED PROOF OF PURCHASE IS REQUIRED FOR WARRANTY SERVICE.

AVIS

Veuillez appeler le service à la clientèle pour toutes questions au:

661-435-8826

818-468-1528

(8:30am - 5:30pm P.S.T.)

PREUVE D'ACHAT ORIGINALE REQUISE POUR SERVICE DE GARANTIE.

IMPORTANTE

Sólo hay que llamar nuestro departamento de servicio al cliente en caso de tener preguntas o inquietudes:

661-435-8826

818-468-1528

(8:30am - 5:30pm P.S.T.)

SE REQUIERE PRUEBA DE COMPRA CON FECHA PARA SERVICIO BAJO GARANTÍA.

ROWAN ELECTRIC APPLIANCE LLC

Phone: 661-435-8826 or 818-468-1528.