

Instruction Manual Rain Shower System

C1

CONTENT

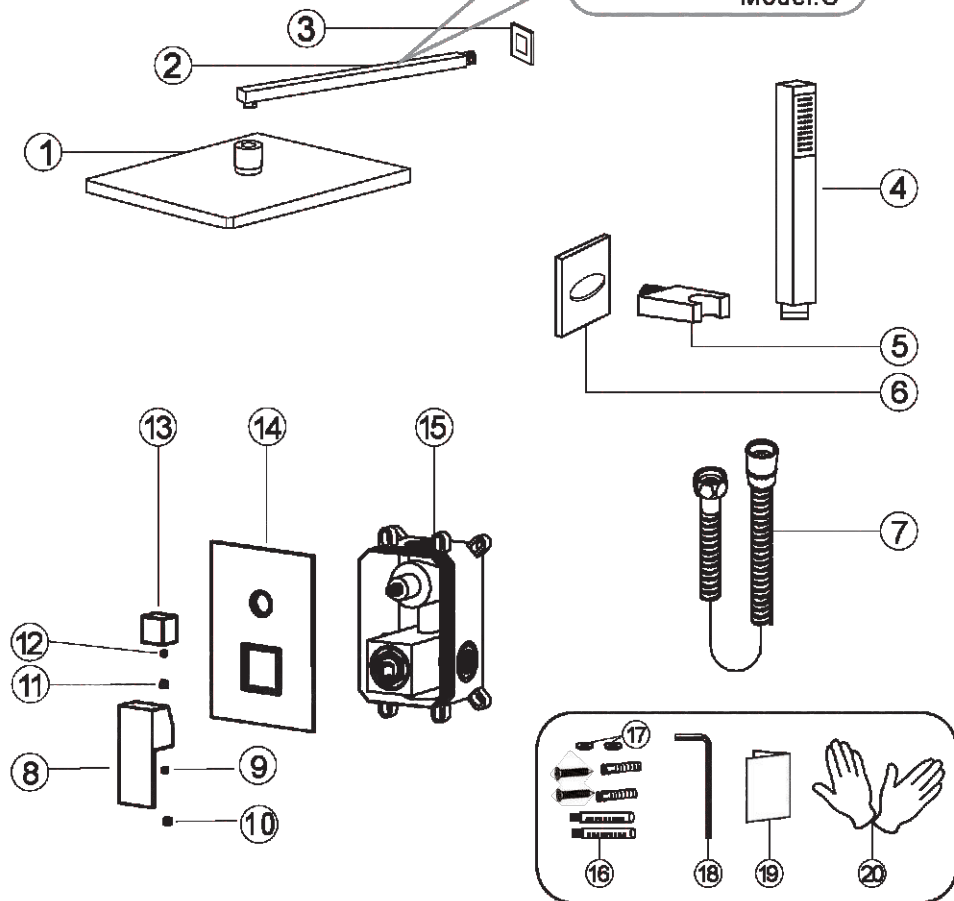
1:Installation Condition	1page
2:Product photo	2page
3:Product List	3~5page
4:Model.A.B outlets installation	6page
5:Model.C.D outlets installation	7page
6:Main body valve installation	8page
7:Model A & C & D 2 way function main body connecting pipe schematic diagram	9page
8:Model B 3 way function main body connecting pipe schematic diagram	10page
9:Main body assembly schematic diagram	10page
10:Model B Install the tub spout	11page
11:Model D Install the connector&shower holder installation	11page
12:Shower arm installation	12page
13: Model A.B.C Shower holder installation	12page
14:Care and maintenance	13page

◆ PRODUCT LIST

Model:A

Or Ceiling Shower arm

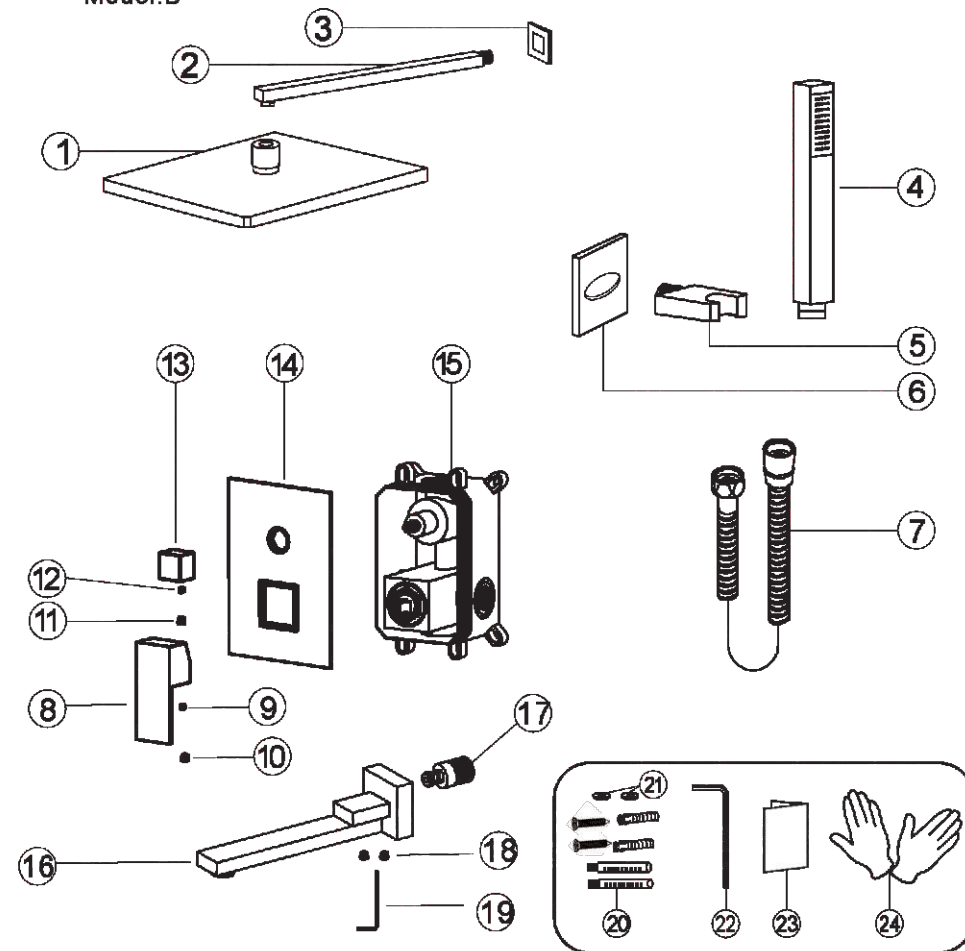
Model:C



No.	Part name	Qty	No.	Part name	Qty
1	Shower head	1	11	Water divider cup	1
2	Shower arm	1	12	Water divider screw	1
3	Shower arm cup	1	13	Water divider	1
4	Shower hand	1	14	Panel	1
5	Holder cup	1	15	Main body	1
6	Hand shower holder	1	16	Body box screw	4
7	Shower hose	1	17	Valve gasket spare parts	4
8	Handle	1	18	Wrench	1
9	Handle screw	1	19	Instruction manual	1
10	Handle cup	1	20	Gloves	2

◆ PRODUCT LIST

Model:B

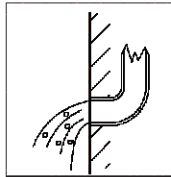


No.	Part name	Qty	No.	Part name	Qty
1	Shower head	1	13	Water divider	1
2	Shower arm	1	14	Panel	1
3	Shower arm cup	1	15	Main body	1
4	Shower hand	1	16	Bathtub spout body	1
5	Holder cup	1	17	Bathtub spout copper	1
6	Hand shower holder	1	18	Bathtub spout screw	2
7	Shower hose	1	19	Bathtub spout Wrench	1
8	Handle	1	20	Body box screw	4
9	Handle screw	1	21	Valve gasket spare parts	4
10	Handle cup	1	22	Wrench	1
11	Water divider cup	1	23	Instruction manual	1
12	Water divider screw	1	24	Gloves	2

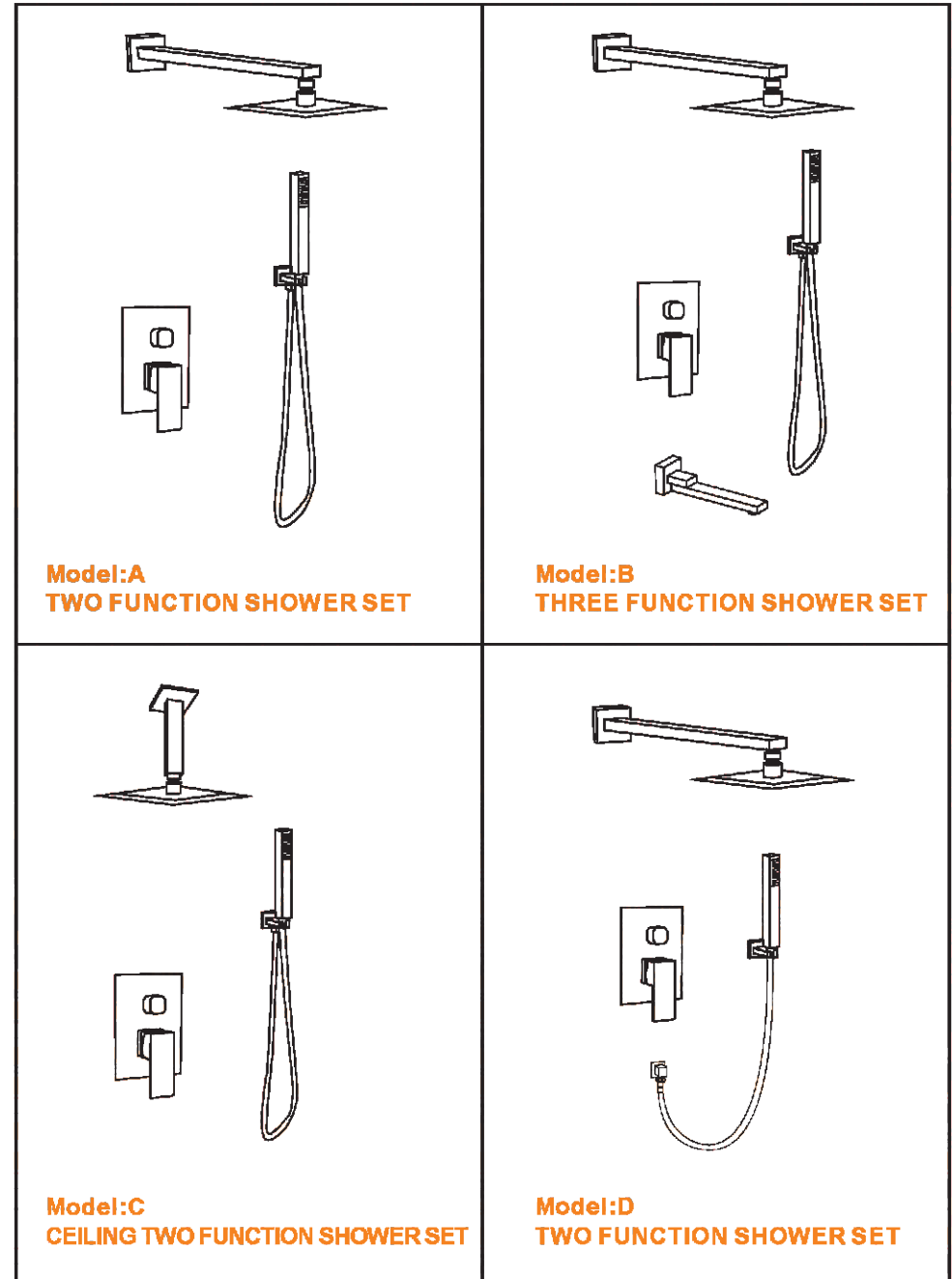
◆ INSTALLATION CONDITION



1. Refer to the 《Standard Part List》 when unpacking , check all parts available .
2. Do not disassemble mixer body by yourself.
3. Connect inlet hoses to supply valves.
4. Make sure inlet pipes and supply valves have been installed and cleaned, also ensure no impurities in pipeline.
5. After installation , check all joints for leakages.
6. Suggest don't fit the faucet in the severely corrosive environments.

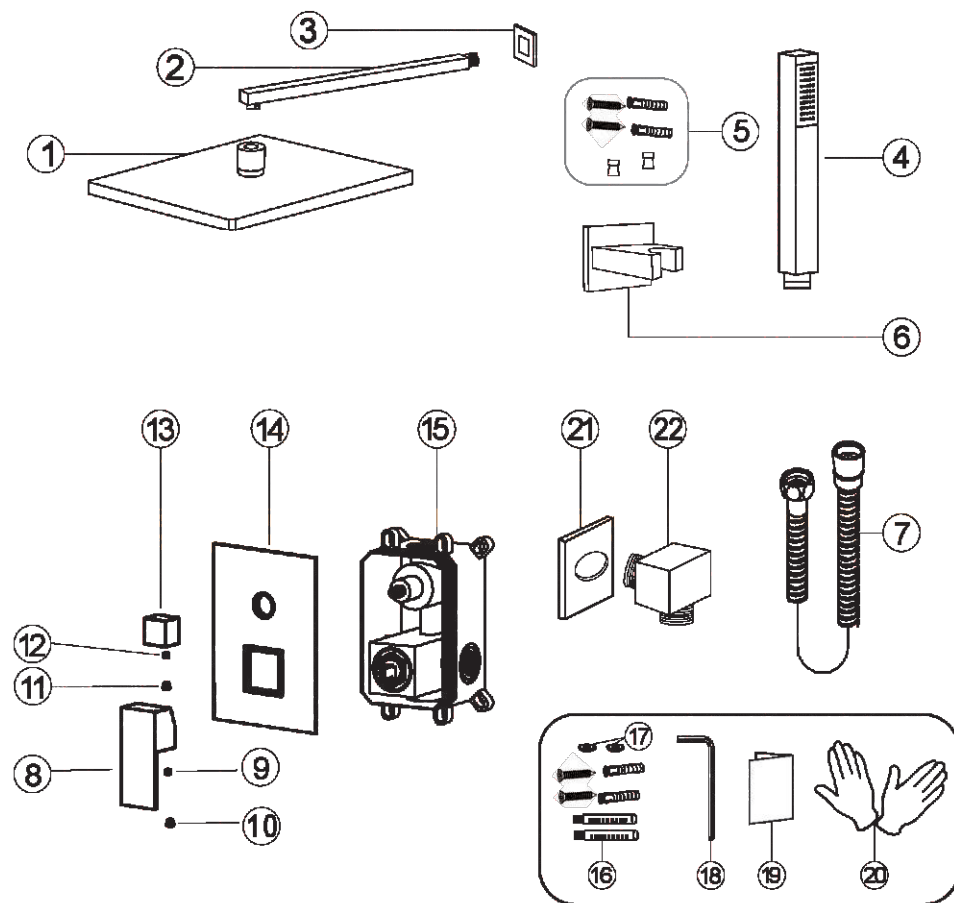


◆ PRODUCT PHOTO



◆ PRODUCT LIST

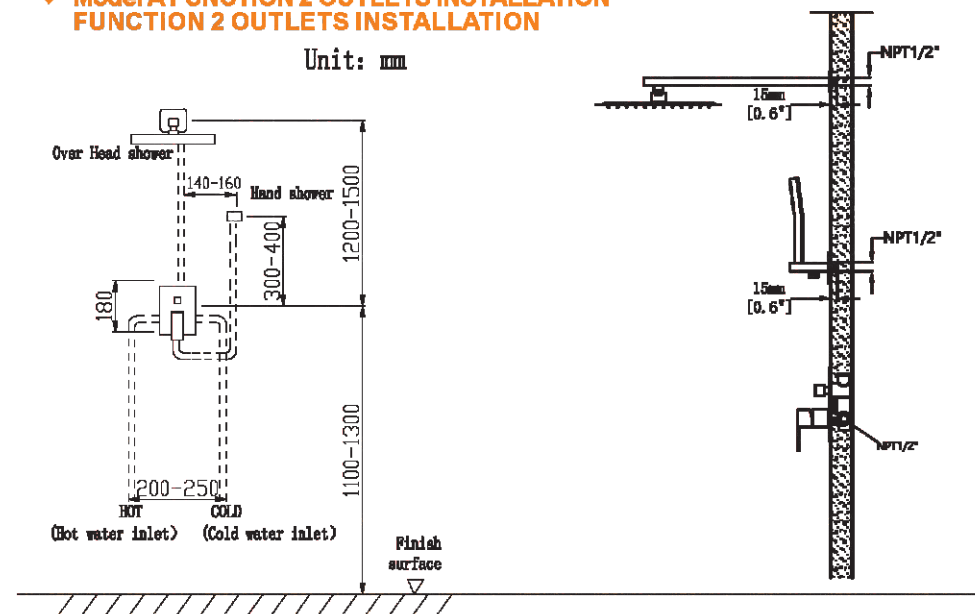
Model:D



No.	Part name	Qty	No.	Part name	Qty
1	Shower head	1	12	Water divider screw	1
2	Shower arm	1	13	Water divider	1
3	Shower arm cup	1	14	Panel	1
4	Shower hand	1	15	Main body	1
5	Holder parts	2	16	Body box screw	4
6	Hand shower holder	1	17	Valve gasket spare parts	4
7	Shower hose	1	18	Wrench	1
8	Handle	1	19	Instruction manual	1
9	Handle screw	1	20	Gloves	2
10	Handle cup	1	21	Cup	1
11	Water divider cup	1	22	Connector	1

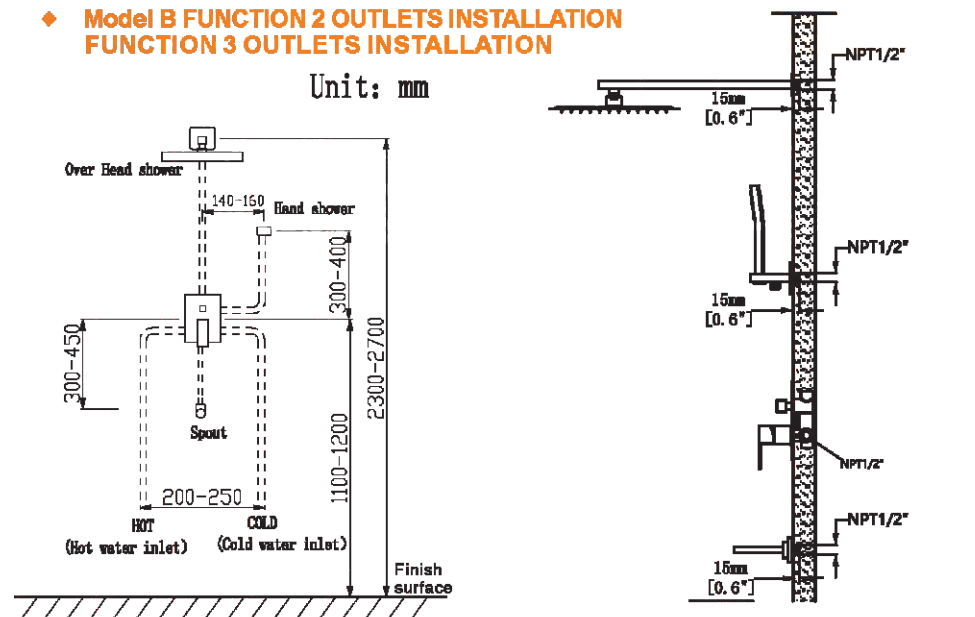
◆ Model A FUNCTION 2 OUTLETS INSTALLATION FUNCTION 2 OUTLETS INSTALLATION

Unit: mm



◆ Model B FUNCTION 2 OUTLETS INSTALLATION FUNCTION 3 OUTLETS INSTALLATION

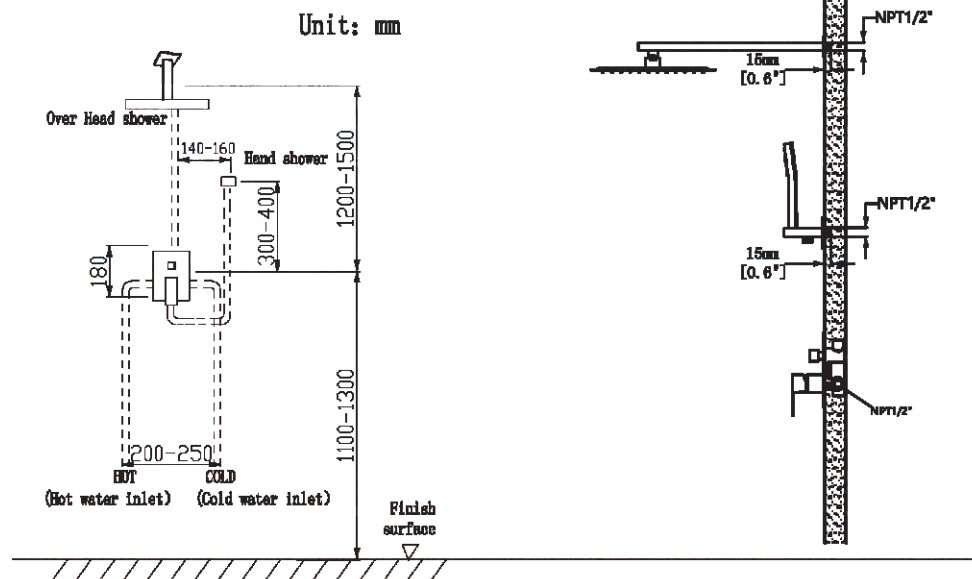
Unit: mm



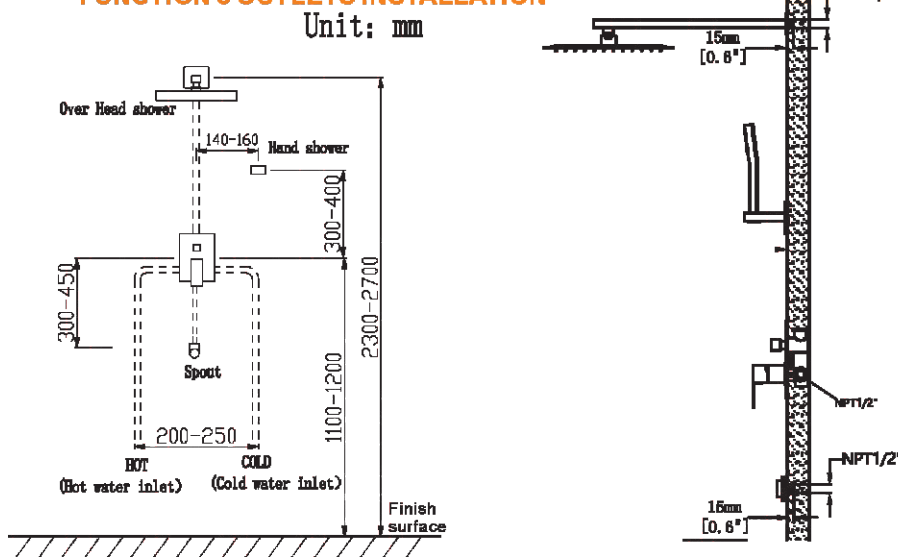
The installation dimensions are for reference only, and can be installed according to actual usage requirements.

The installation depth of ceiling rod is about 15mm, The installation depth of shower seat is about 15mm. The main body installation depth is on the following detail description

◆ Model C FUNCTION 2 OUTLETS INSTALLATION FUNCTION 2 OUTLETS INSTALLATION



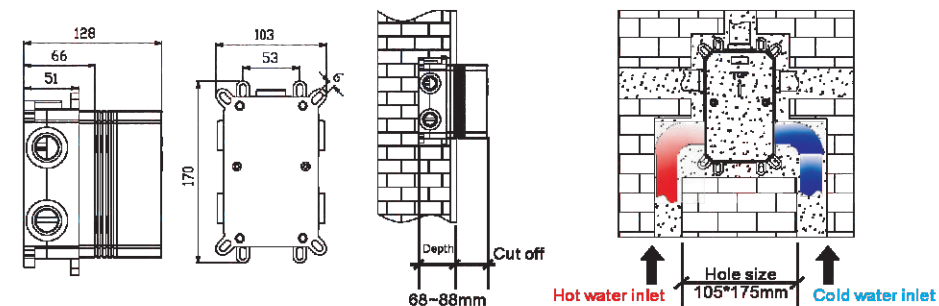
◆ Model D FUNCTION 2 OUTLETS INSTALLATION FUNCTION 3 OUTLETS INSTALLATION



The installation dimensions are for reference only, and can be installed according to actual usage requirements.

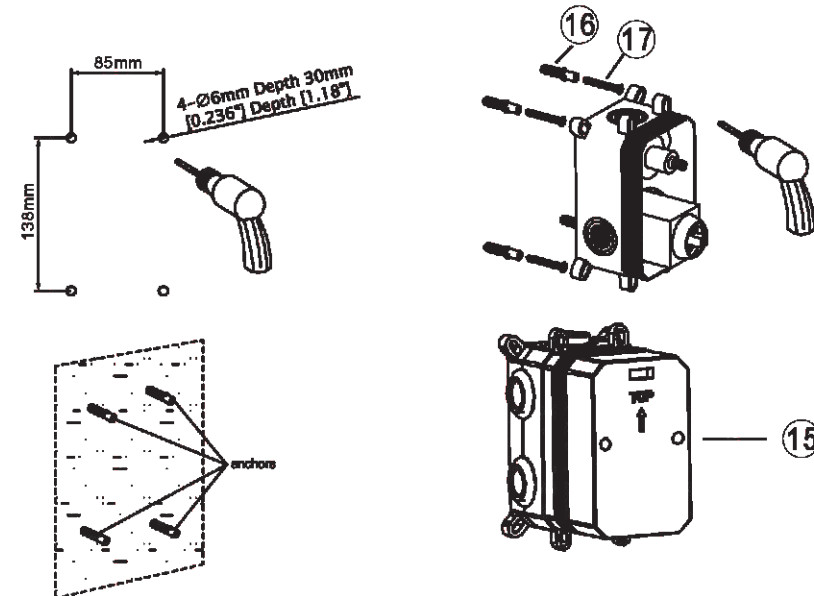
The installation depth of ceiling rod is about 15mm, The installation depth of shower seat is about 15mm. The main body installation depth is on the following detail description

◆ MAIN BODY VALVE INSTALLATION



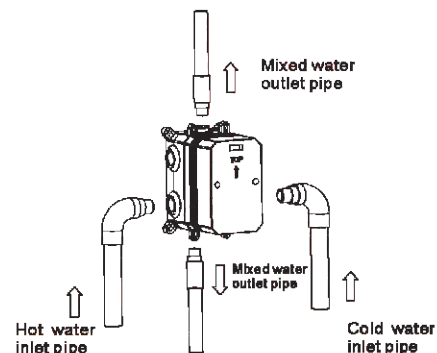
According to the basic size of the concealed box, use a special tool to open the main hole in the solid wall. As shown in the figure, the distance between the surface of the wall after the final treatment and the bottom surface of the opening should be considered to be 68~88mm.

According to the size of installation to install the anchors to the wall, then use ⑯ Valve gasket spare parts then install the ⑮ Main body



Please note that the level meter should be parallel, otherwise the panel cannot be installed. Pay attention to the length and width of the screw position before marking

◆ **Model A & C & D**
TWO-FUNCTION MAIN CONNECTING PIPE SCHEMATIC DIAGRAM

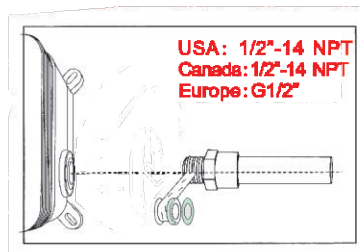
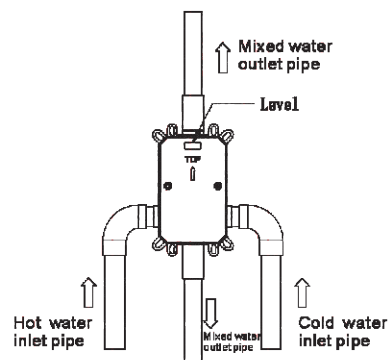


As shown in the figure, the inlet and outlet pipes are pre-buried, pay attention to the correct direction of installing the pre-buried box, and make sure that the mark TOP on the top of the installation box is facing upward.

◆ **Model A & C & D**
2 WAY FUNCTION MAIN BODY CONNECTING PIPE SCHEMATIC DIAGRAM

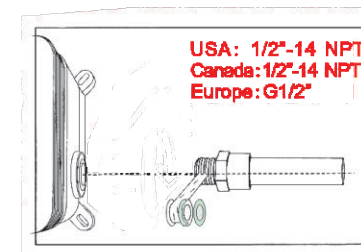
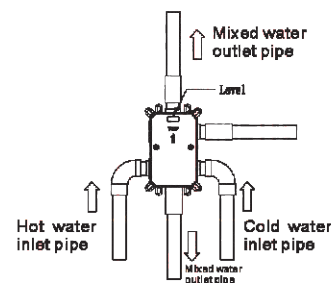


Warning: must install hot water and cold water inlet strictly as instructions.



Install the hot and cold water inlet pipes, Shower head and hand shower holder pipes. Turn on the water source to test whether the left and right inlet pipes are tightly connected without leakage. After the test, adjust the flow switch to be on to test whether the mixed outlet pipe. The connection is tight and there is no leakage.

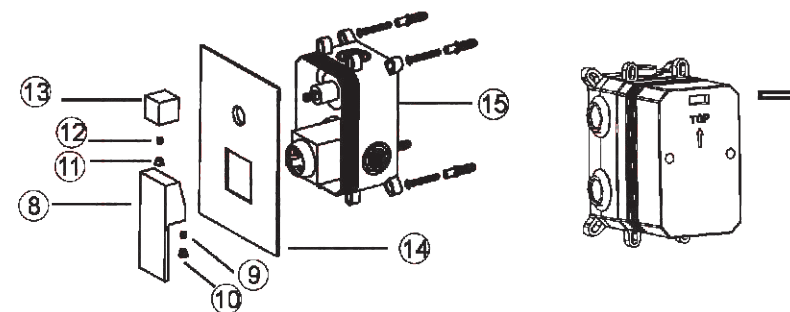
◆ **Model B**
3 WAY FUNCTION MAIN BODY CONNECTING PIPE SCHEMATIC DIAGRAM



Warning: must install hot water and cold water inlet strictly as instructions.

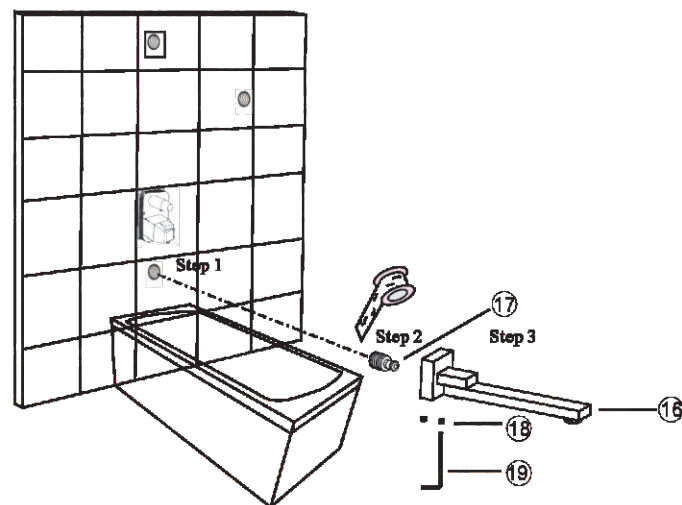
Install the hot and cold water inlet pipes, Shower head and hand shower holder pipes. Turn on the water source to test whether the left and right inlet pipes are tightly connected without leakage. After the test, adjust the flow switch to be on to test whether the mixed outlet pipe. The connection is tight and there is no leakage.

◆ **MAIN BODY ASSEMBLY SCHEMATIC DIAGRAM**



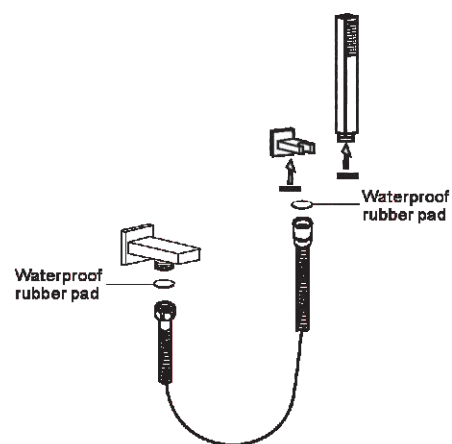
Please fix the 15 Main body to the wall then remove the plastic protective cover and install 14 Panel 13 Water divider, 12 Screw, 11 Water divider cup in the order. Finally you could install 8 Handle, 9 Screw, 10 Handle cup.

◆ **Model B**
INSTALL THE TUB SPOUT(IF HAVE)



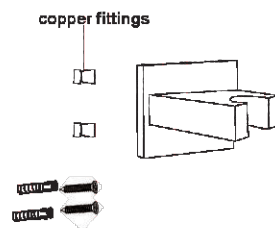
Step1. Screw the thread into the water pipe inside the wall.
Step2. Screw the main body into the thread.
Step3. Rotate and fix the body with the special-shaped wrench.

◆ **Model D**
INSTALL THE connector(IF HAVE)



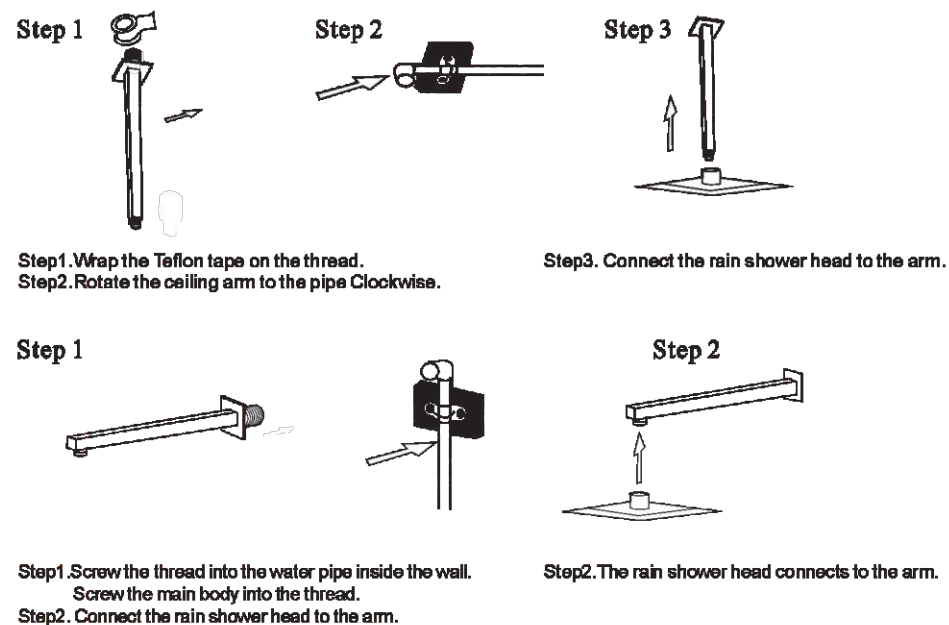
Step1. The connector to be wrapped with teflon tape, Screw the thread into the water pipe inside the wall.
Step2. Install the rubber pad on the shower hose and connect it with the connector.

◆ **Model D**
SHOWER HOLDER INSTALLATION



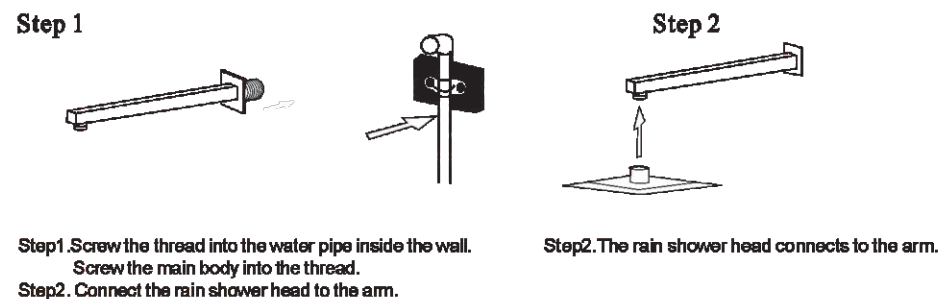
Step1. Using anchors to screw the copper fittings to the wall firstly
Step2. Remove two screws on the shower seat
Step3. Insert the shower seat into the copper fittings that have been installed on the wall and then fix the shower seat with 2 screws

◆ **INSTALLATION OF RAIN SHOWER HEAD**



Step1. Wrap the Teflon tape on the thread.
Step2. Rotate the ceiling arm to the pipe Clockwise.

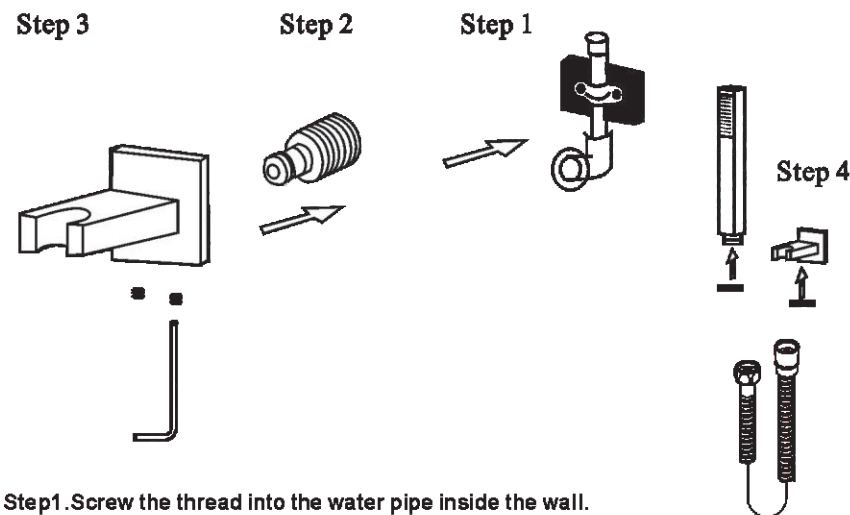
Step3. Connect the rain shower head to the arm.



Step1. Screw the thread into the water pipe inside the wall.
Screw the main body into the thread.
Step2. Connect the rain shower head to the arm.

Step2. The rain shower head connects to the arm.

◆ **MODEL A.B.C SHOWER HOLDER INSTALLATION**
INSTALL THE HAND SHOWER HOLDER



Step1. Screw the thread into the water pipe inside the wall.
Step2. Screw the main body into the thread.
Step3. Rotate and fix the body with the special-shaped wrench.
Step4. Connect hand shower and the hose.

♦ CARE AND MAINTENANCE

In order to keep the mixer surface bright , please clean the mixer regularly.

Rinse faucet with clean water and wipe with soft cotton cloth.

Avoid suing cleaning powder , harsh cleaning chemicals, brushes, and cloth with coarse surface to prevent scratching and corrosion.

Do not use acid cleaner to clean the faucet as it may cause surface corrosion of the faucet. If the faucet comes into contact with harmful acid substances, please rinse it with water immediately.



♦ IF A LARGE-SCALE CLEAN-UP IS NECESSARY, FOLLOW THESE PROCEDURES:

1: Use clean water and soft cloth to remove dirt on the surface as much as possible.

2: Use one of the following cleaners to remove dirt on the surface

Mild liquid cleaner.

Colorless glass cleaner, powder cleaner which does not have abrasive function and can be dissolved completely.

Polish liquid which does not have abrasive function.

3: After cleaning, remove the cleansing agent with clean water completely and wipe with soft cotton cloth.

Website: www.casainc.com

Contact Phone Number: (303) 747-4321

Service Contact: service@mmcasainc.com