



Peco 2-Bag Bagger

Parts Manual

Model:
891008



THE MANUAL

Before you operate your unit, carefully and completely read manuals supplied with the unit. The contents will provide you with an understanding of safety instructions and controls during normal operation and maintenance.

For your safety and the safety of others always read, understand, and follow all DANGER, WARNING, and CAUTION messages found in manuals and on safety decals.

Hardware descriptions are given in decimals.

Decimals to Fractions			
.063	1/16	.563	9/16
.125	1/8	.625	5/8
.188	3/16	.688	11/16
.250	1/4	.750	3/4
.313	5/16	.813	13/16
.375	3/8	.875	7/8
.438	7/16	.938	15/16
.500	1/2	1.00	1

SERVICE AND REPLACEMENT PARTS

When ordering replacement parts or making service inquiries, know the Model and Serial numbers of your unit and engine.

Numbers are located on the product registration card in the unit literature package. They are printed on a serial number label, located on the frame of your unit.

- Record Unit Model and Serial numbers here:

- Record Engine Model and Serial numbers here:

UNAUTHORIZED REPLACEMENT PARTS

Use only Ariens/Gravely replacement parts. The replacement of any part on this vehicle with anything other than an Ariens/Gravely authorized replacement part may adversely affect the performance, durability, or safety of this unit and may void the warranty. Ariens/Gravely disclaims liability for any claims or damages, whether warranty, property damage, personal injury or death arising out of the use of unauthorized replacement parts.

PRODUCT REGISTRATION

The Ariens/Gravely dealer must register the product at the time of purchase. Registering the product will help the company process warranty claims or contact you with the latest service information. All claims meeting requirements during the limited warranty period will be honored, whether or not the product registration card is returned. Keep a proof of purchase if you do not register your unit.

Customer Note: If Dealer does not register your product, please fill out, sign and return the product registration card to Ariens/Gravely or go to www.ariens.com or www.gravely.com.

YOUR SATISFACTION IS IMPORTANT

Questions? Please follow these helpful steps:

1. Refer to the manuals supplied with your unit.
They will guide you through safe and proper operation and maintenance.
They contain specifications on your unit.
If your questions are not answered in these manuals, go to step number two.
2. Contact Your Dealer.
Our dealers will be happy to supply any service or advice required to keep your unit operating at peak efficiency.
A factory trained staff is available to support your equipment needs. They stock genuine Gravely parts and lubricants manufactured with the same precision and skill as the original.
If your questions are not resolved by the support staff, ask for the manager or owner.
When contacting your Dealer supply your model and serial numbers.

TO SPEED PARTS ORDERING:

1. Know the model and serial numbers of your unit.
2. Know the part number required.
3. Know the quantity required.
4. Know the part description.

MODELS

Model 891008
Peco 2-Bag Bagger

TABLE OF CONTENTS

Decals 4

Blower Housing Assembly 5

Impeller Assembly 6

Belt Drive Assembly 7

Bagger, Hose and Mount 8

Bagger Service Parts 9

Mount Latches..... 10

Counter Weights – 44" and 48" 11

Counter Weights – 52" and 60" 12

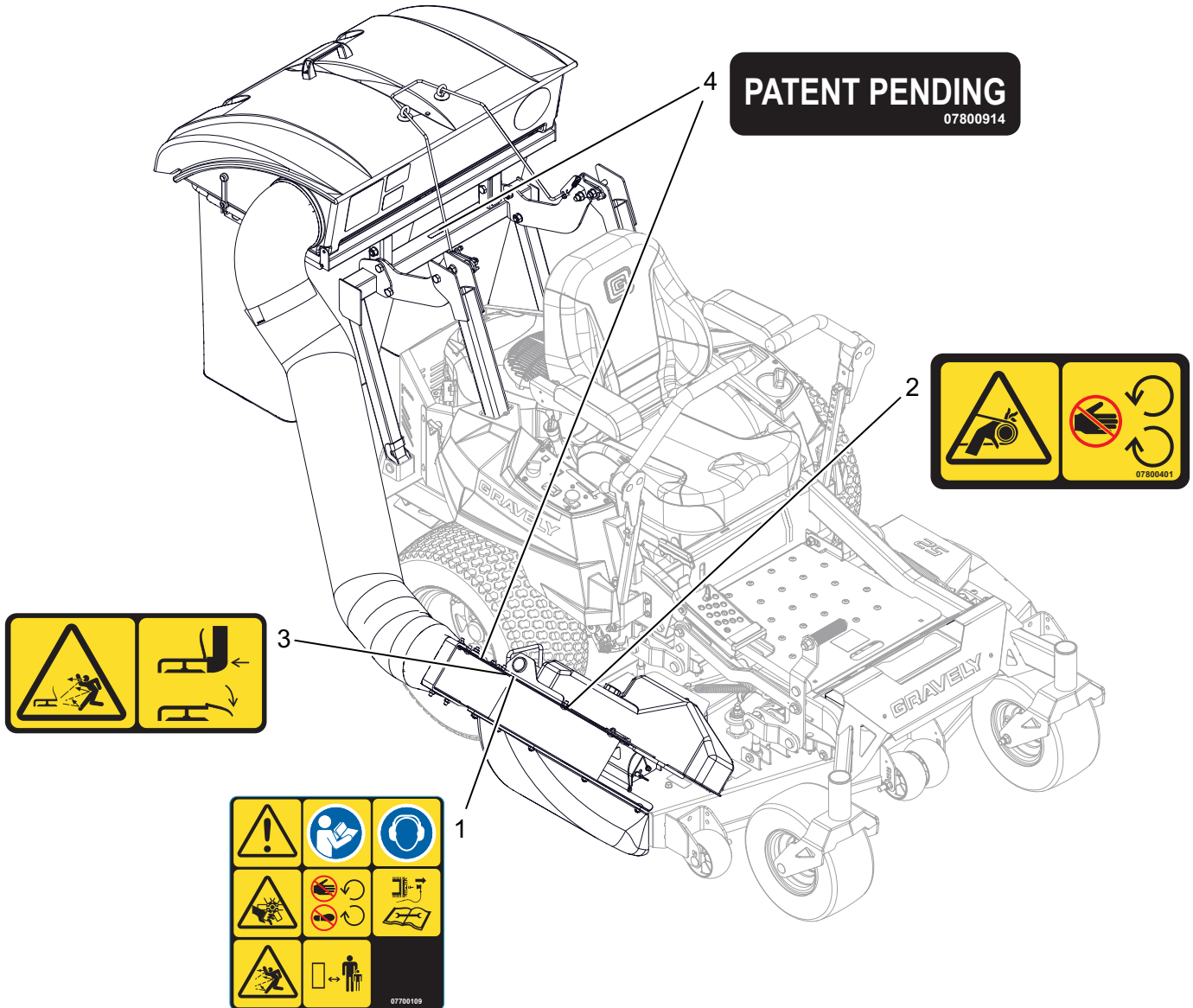
Kit Components – 44" and 48" (79106300)..... 13

Kit Components – 52" (79106500) 14

Kit Components – 60" (79106600) 15

DECALS

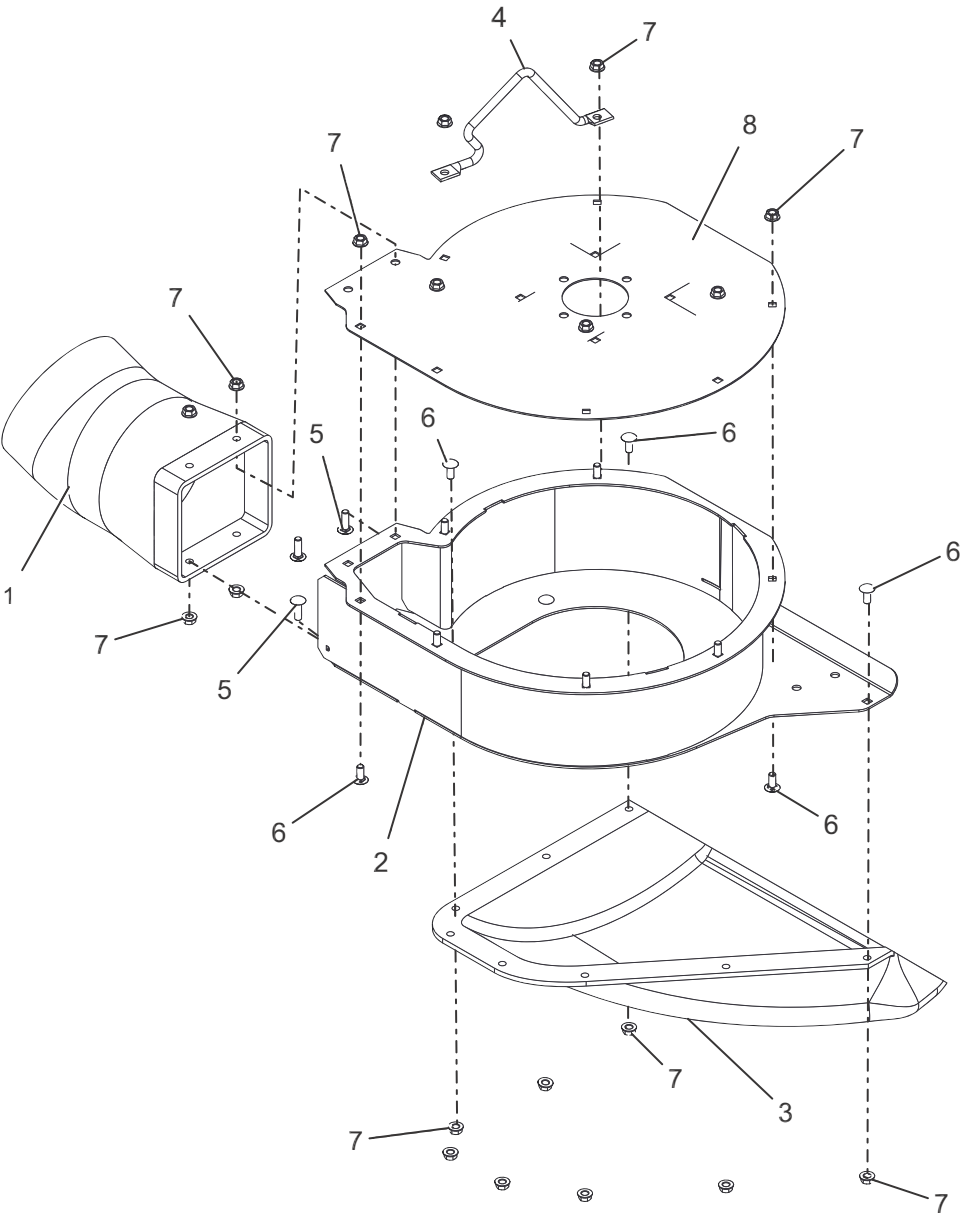
Model 891008



BOM ID	Number	Qty	Description
1	07700109	1	DECAL, WARNING -VAC ISO CE
2	07800401	1	DECAL, SAFETY - GUARDING
3	07800402	1	DECAL, SAFETY - DECK GUARDING
4	07800914	2	DECAL, PATENT PENDING

BLOWER HOUSING ASSEMBLY

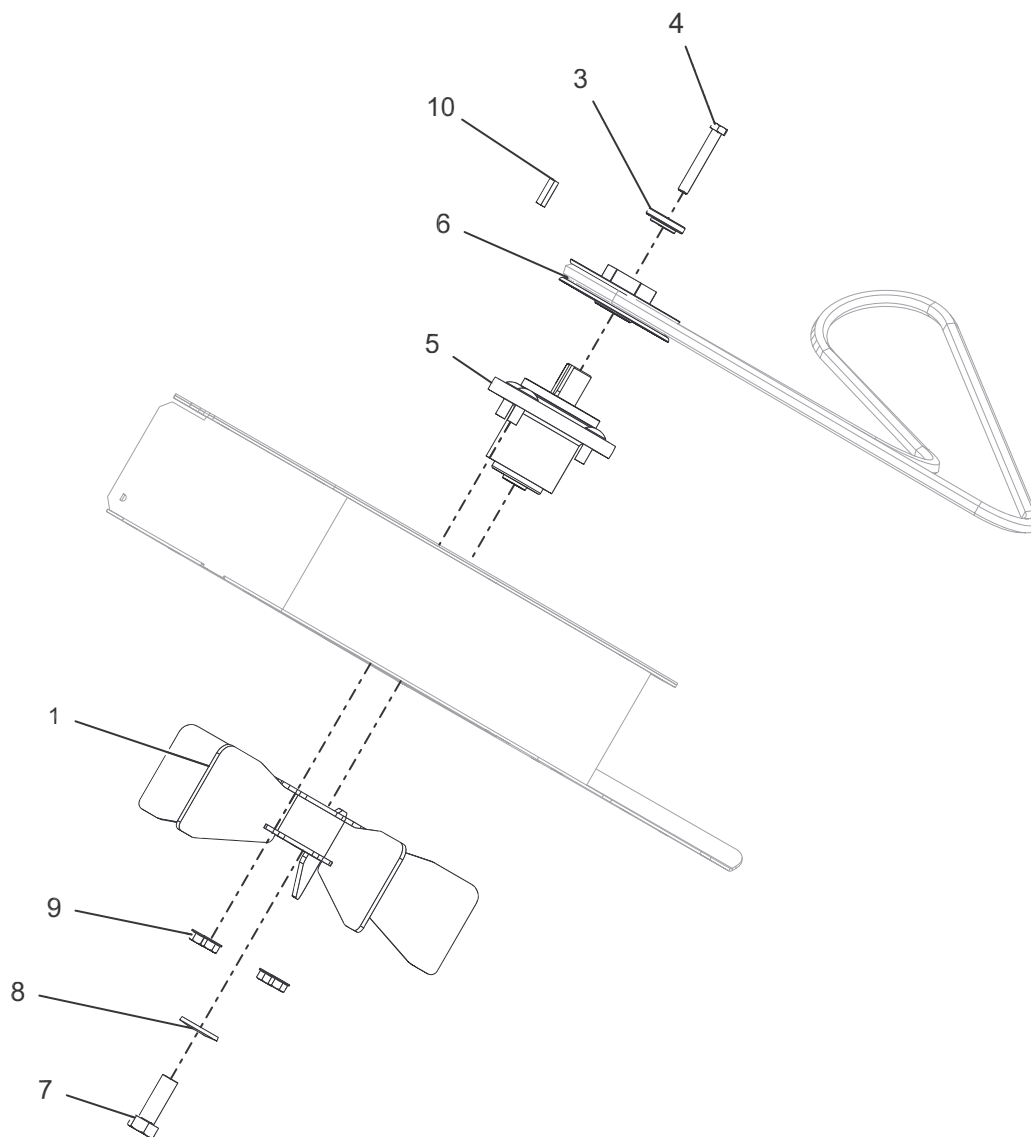
Model 891008



BOM ID	Number	Qty	Description
1	00452200	1	ADAPTOR, HOSE
2	05143651	1	WLDMT, HOUSING SCROLL (BLACK)
3	05144600	1	PLENUM ,GRASS BLOWER
4	05147051	1	HANDLE, BOLT -ON (BLACK)
5	06200007	4	BLT-RDHDSQSHNK .31-18X1.00 G5YWZC
6	06220800	15	BLT-RHDSSQNK .31-18X.75 G5YZ
7	06543100	19	NUT, LK-TOP-FLG .312-18 YWZC
8	59112900	1	PLT, BLOWER COVER (BLACK)

IMPELLER ASSEMBLY

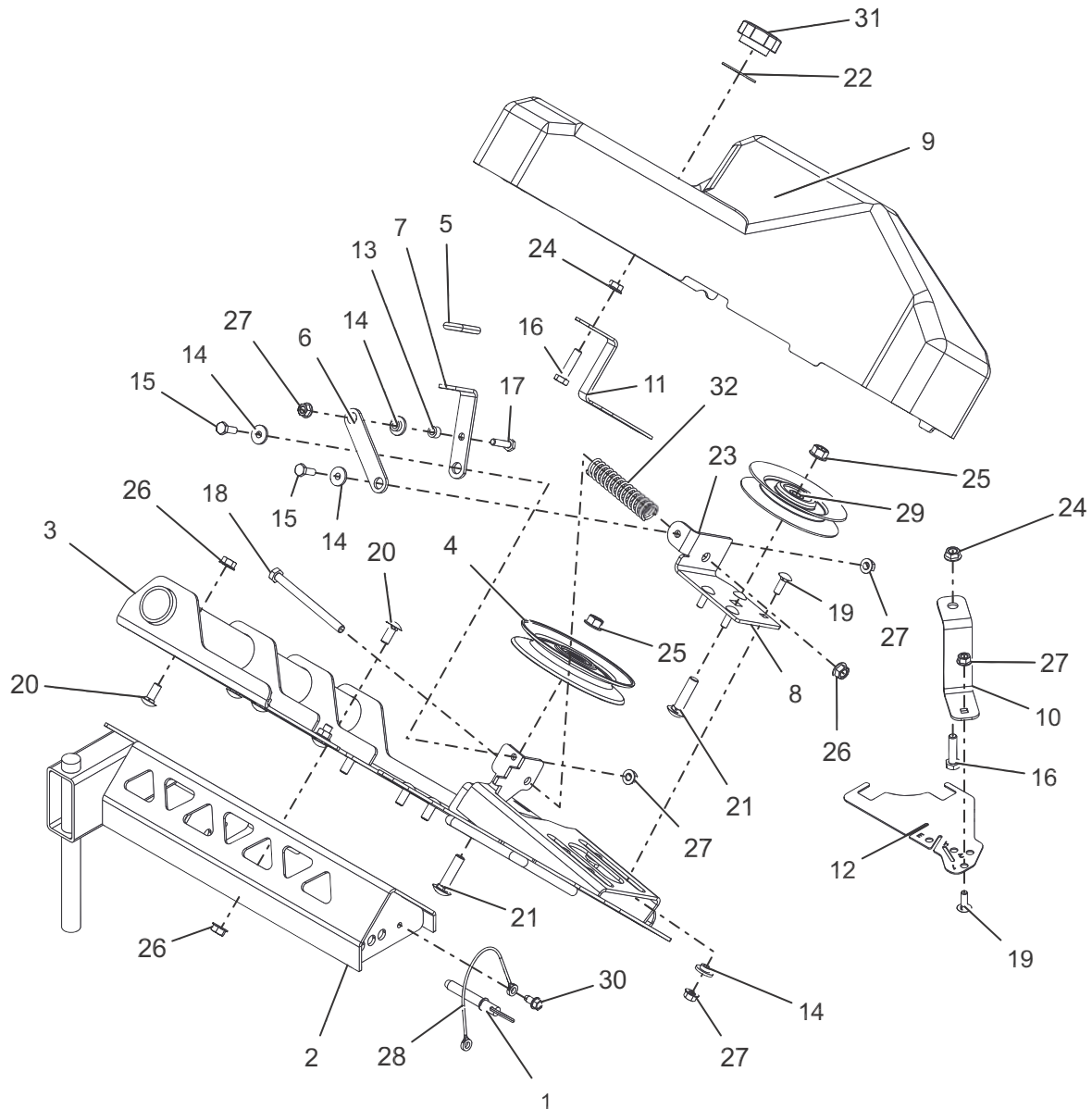
Model 891008



BOM ID	Number	Qty	Description
1	05137500	1	IMPELLER, HD BLOWER
3	04530500	1	RETAINER, SHEAVE SPINDLE
4	05901601	1	BOLT, HEX 0.375-16X2.5 GR8
5	59112600	1	SPINDLE, ASM HOUSING - ALUM. (BLOWER)
6	07347967	1	PULLEY, V-1" ID X 5.75" OD (BLACK)
7	05978900	1	BLT-HEX .625-18X1.75 GR8 YWZC
8	06445700	1	WSHR, BLVL-.63X1.625X.14
9	06542000	4	NUT, LK-TOP-FLG .38-16 YWZC
10	06611200	1	KEY-SQ .250X.250X1.00 RC 40-50

BELT DRIVE ASSEMBLY

Model 891008

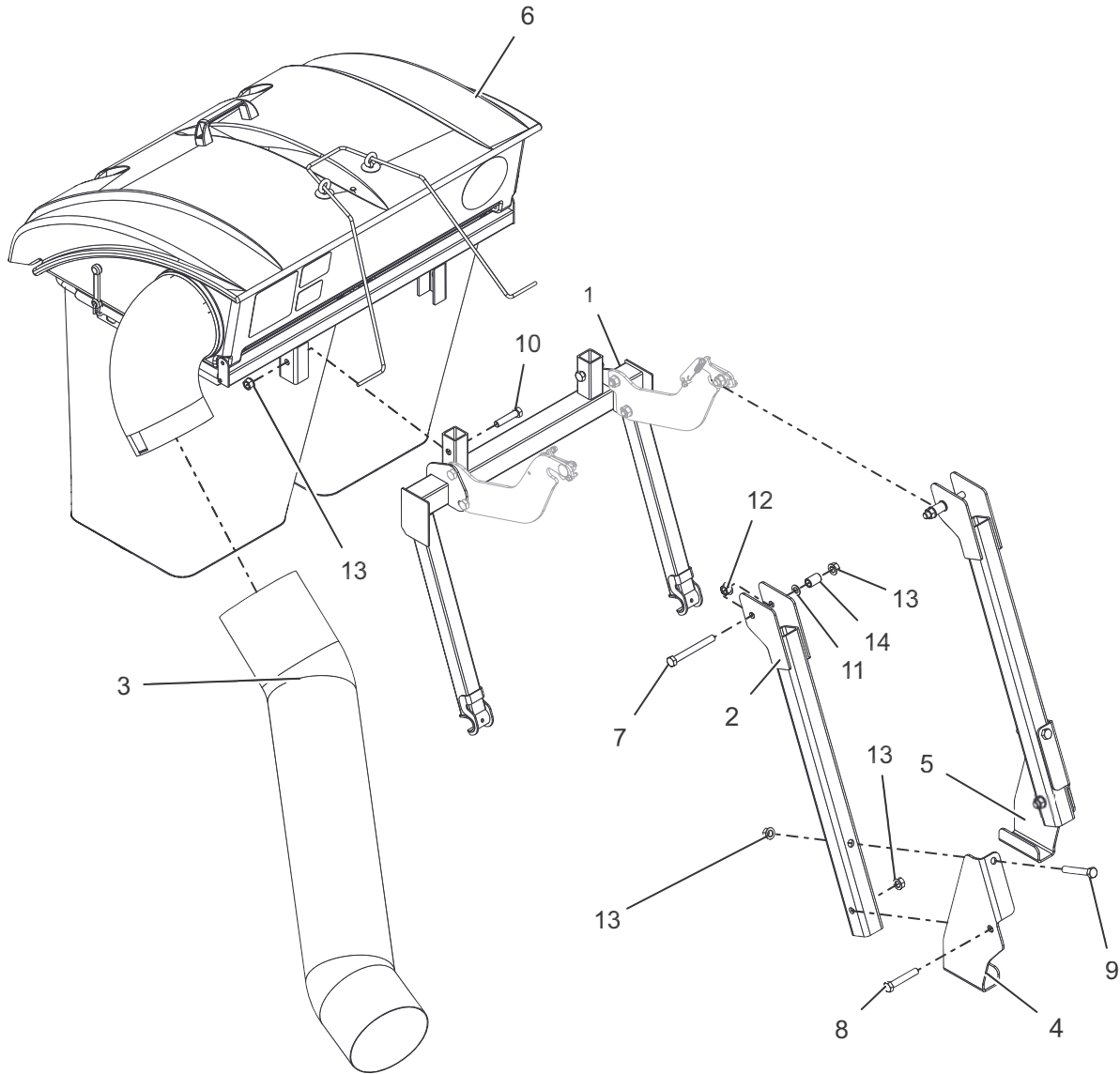


BOM ID	Number	Qty	Description
1	01593500	1	PIN, SPRING BALL .375 OD X 1.50
2	05143351	1	WLDMT, BLOWER MNT (BLACK)
3	05143451	1	WLDMT, BLOWER SPINDLE MNT (BLACK)
4	07335000	1	IDLER, V-5.00" W/.59 STANDOFF
5	04396600	1	GRIP, SEAT LEVER
6	04773900	1	LINK, TENSIONER
7	04774000	1	HANDLE, TENSIONER
8	05144500	1	PLT, TENSION PULLEY MOUNTING
9	05146400	1	COVER, BELT HD BLOWER
10	05146900	1	PLT, DECK COVER MNT
11	05147151	1	PLT, COVER MNT (BLACK)
12	05148300	1	PLT, TEMPLATE
13	05501121	1	BSHG-SLV .261X.44X.25
14	05513400	7	BSHG, FLANGE .265X.437X.250X.750
15	05946800	2	BOLT, HEX 0.25-20X0.75 GR5
16	05947500	2	BOLT, HEX 0.313-18X1.25 GR5
17	05947700	1	BOLT, HEX 0.25-20X1 GR5

BOM ID	Number	Qty	Description
18	05963200	1	BOLT, HEX 0.313-18X4 GR5
19	06219900	5	BOLT, CARRIAGE 0.25-20X0.75 GR5
20	06220800	8	BLT-RHDSSQNK .31-18X.75 G5YZ
21	06225600	2	BLT-RHDSSQNK .38-16X1.50 G5YZ
22	06439300	1	WSHR-FL-STL .380X1.50X.062 YWZC
23	06514900	1	NUT, PUSH .312
24	06530400	2	@NUT-SPNLK-FLG .312-18 YWZC
25	06542000	2	NUT, LK-TOP-FLG .38-16 YWZC
26	06543100	9	NUT, LK-TOP-FLG .312-18 YWZC
27	06543500	8	NUT, LK-TOP-FLG .25-20 YWZC
28	06900317	1	LANYARD, 12"
29	07327600	1	IDLER, V, 4.00X.38
30	07400034	1	SCR-TAP .25-20X.50 HWH TR YWZ
31	07534800	1	KNOB, CLAMPING
32	08300709	1	SPRG, COMPRESSION

BAGGER, HOSE AND MOUNT

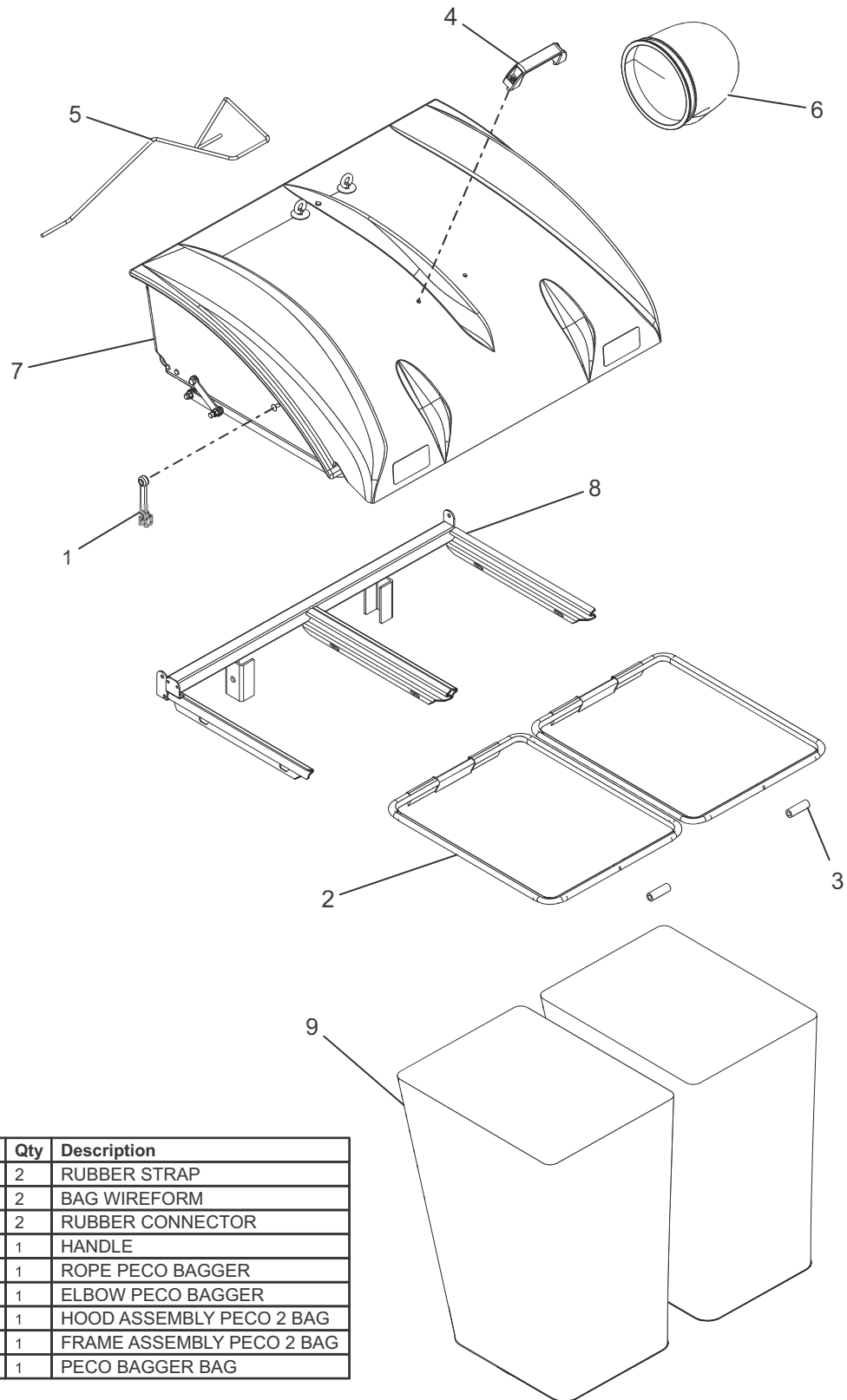
Model 891008



BOM ID	Number	Qty	Description
1	05129751	1	WLDMT, BAGGER
2	05138551	2	WLDMT, BAGGER FRONT MOUNT (BLACK)
3	04222900	1	HOSE, FLEXIBLE-45"
4	05116451	1	BRKT, SUPPORT ROPS-RH (BLACK)
5	05116551	1	BRKT, SUPPORT ROPS-LH (BLACK)
6	05138400	1	BAGGER, PECO 2-BAG RECEPTACLE
7	05900102	2	BOLT, HEX 0.5-13X4.5 GR8
8	05959900	2	BOLT, HEX 0.5-13X3 GR5
9	05960000	2	BOLT, HEX 0.5-13X3.25 GR5
10	05961000	2	BOLT, HEX 0.5-13X2.25 GR5
11	06436600	2	WSHR-FL-STL .505X.880X.072 YWZC
12	06543300	2	NUT .50-13 WIZ FLANGE
13	06543600	8	NUT, LK-TOP-FLG .50-13 YWZC
14	09357700	2	SPACER, .510 X .750 X 1.148

BAGGER SERVICE PARTS

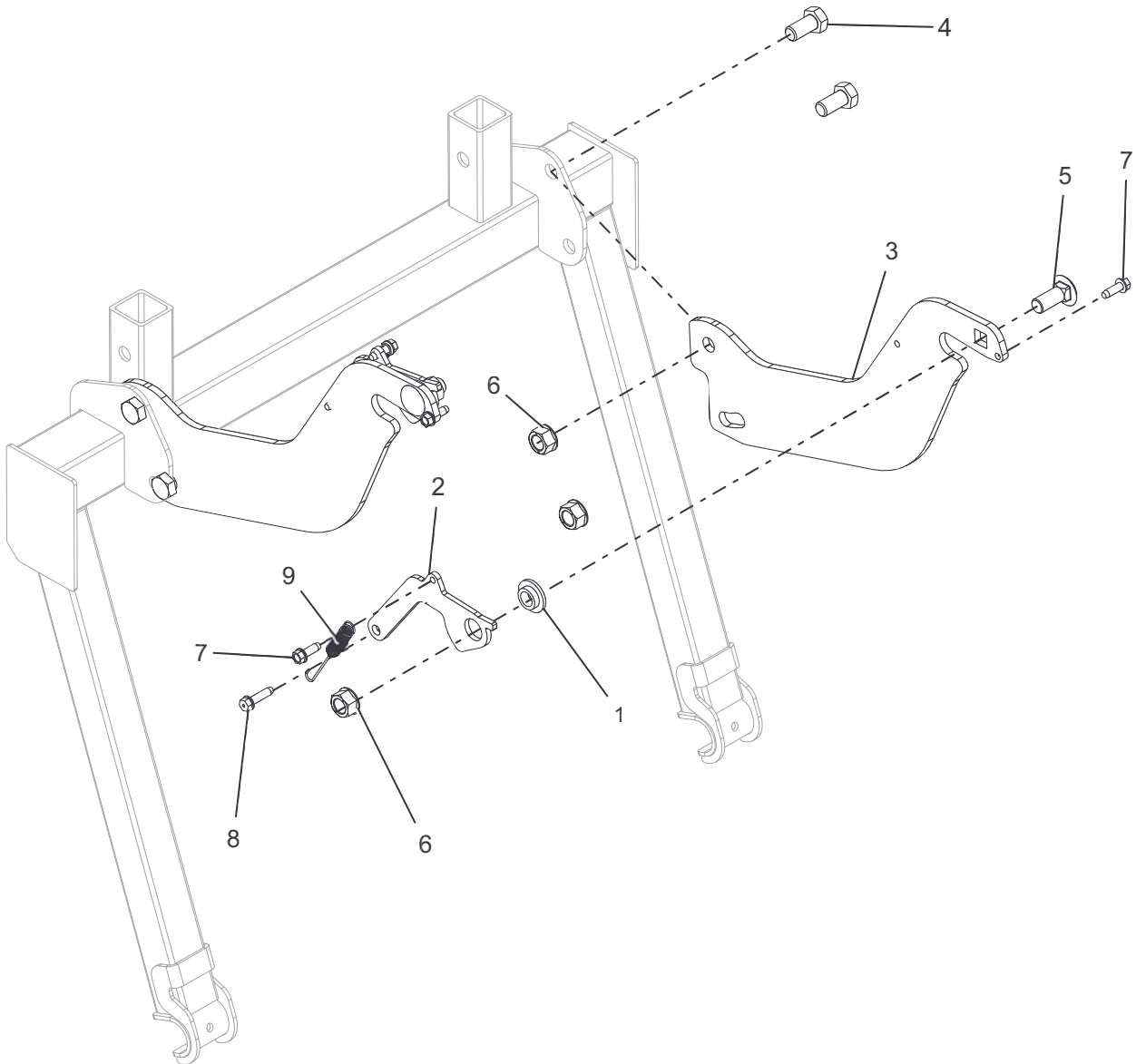
Model 891008



BOM ID	Number	Qty	Description
1	21562400	2	RUBBER STRAP
2	21562600	2	BAG WIREFORM
3	21562700	2	RUBBER CONNECTOR
4	21562800	1	HANDLE
5	21562900	1	ROPE PECO BAGGER
6	21563000	1	ELBOW PECO BAGGER
7	21564300	1	HOOD ASSEMBLY PECO 2 BAG
8	21564400	1	FRAME ASSEMBLY PECO 2 BAG
9	21565000	1	PECO BAGGER BAG

MOUNT LATCHES

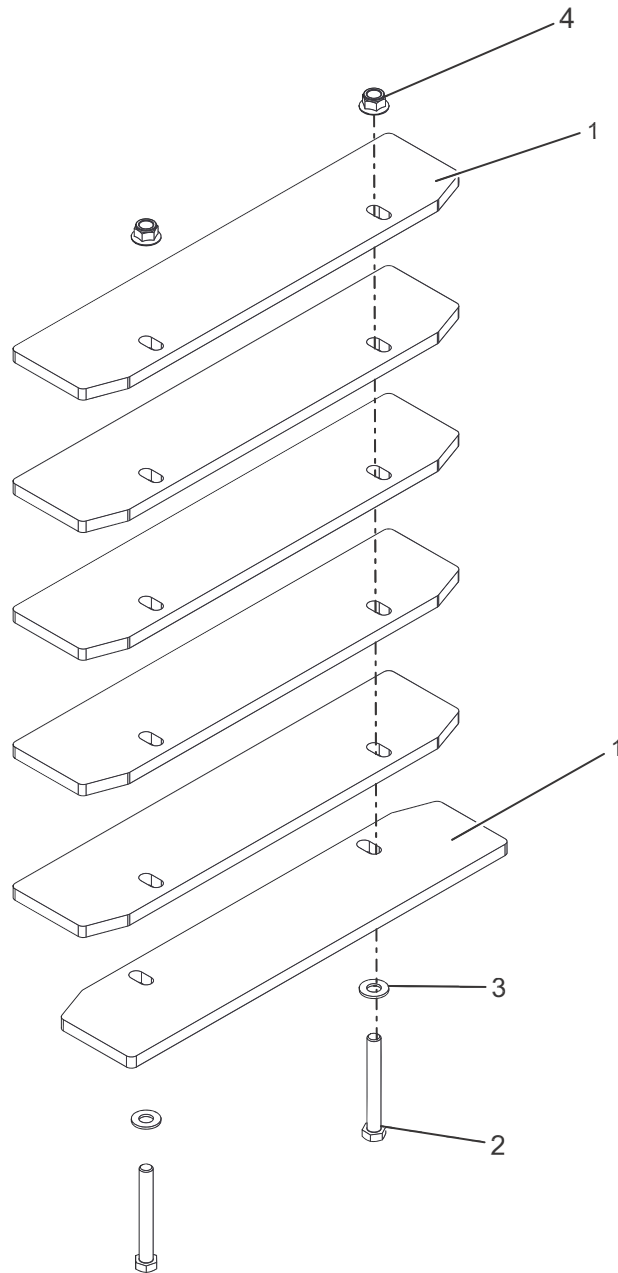
Model 891008



BOM ID	Number	Qty	Description
1	03989100	2	BSHG, FLANGE .515X.750X.31X1.12
2	04991000	2	BAGGER, LATCH
3	05091451	2	LATCH, ARM (BLACK)
4	05947100	4	BOLT, HEX 0.5-13X1 GR5
5	06224700	2	BOLT, CARRIAGE 0.5-13X1.25 GR5
6	06543600	6	NUT, LK-TOP-FLG .50-13 YWZC
7	07400111	4	SCR-TAP .25-20X.75 HWH TR YWZ
8	07412400	2	SCR-TAP .25-20X1.00 HWH TR YZ
9	08321100	2	SPRING, EXTENSION

COUNTER WEIGHTS – 44" AND 48"

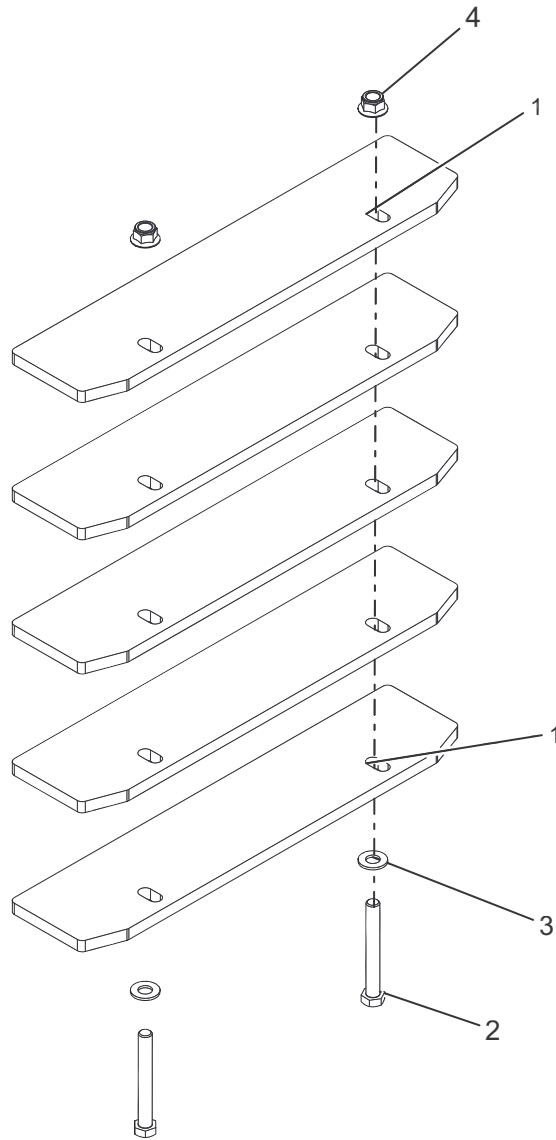
Models 891008



BOM ID	Number	Qty	Description
1	04422400	6	WEIGHT, COUNTER
2	05961900	2	BOLT, HEX 0.5-13X4 GR5
3	06441900	2	WSHR-FL-STL.531X1.06X.095YWZC
4	06500010	2	NUT-LK-NYL-FLG .50-13 YWZC

COUNTER WEIGHTS – 52" AND 60"

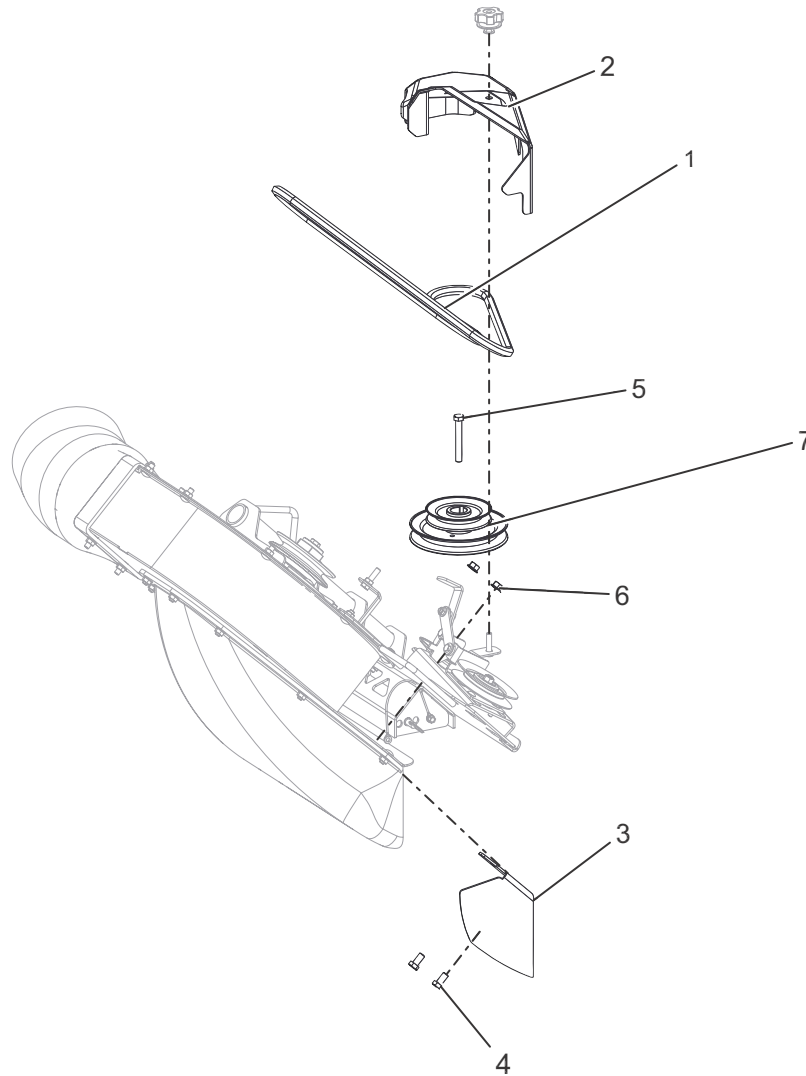
Models 891008



BOM ID	Number	Qty	Description
1	04422400	5	WEIGHT, COUNTER
2	05961900	2	BOLT, HEX 0.5-13X4 GR5
3	06441900	2	WSHR-FL-STL.531X1.06X.095YWZC
4	06500010	2	NUT-LK-NYL-FLG .50-13 YWZC

KIT COMPONENTS – 44" AND 48" (79106300)

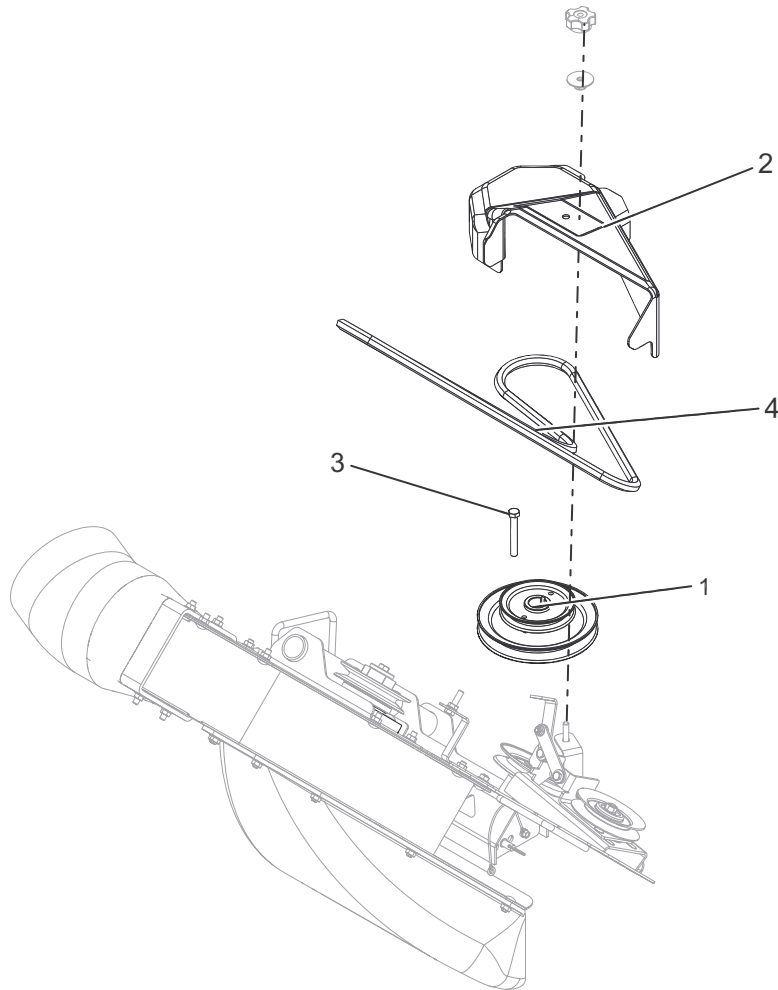
Model 891008



BOM ID	Number	Qty	Description
1	07200826	1	HEX BELT, AA SECTION 68.09"
2	05146500	1	COVER, BELT 44-48 BLOWER
3	05146851	1	BAFFLE, BOLT -IN 44-48 HD BLOWER (BLACK)
4	05959400	2	BOLT, HEX 0.375-16X0.75 GR5
5	05963000	1	BOLT, HEX 0.375-16X2.75 GR8
6	06542000	2	NUT, LK-TOP-FLG .38-16 YWZC
7	07347851	1	PULLEY, DOUBLE -1"IDX3.50"&6.0 (BLACK)

Kit Components – 52" (79106500)

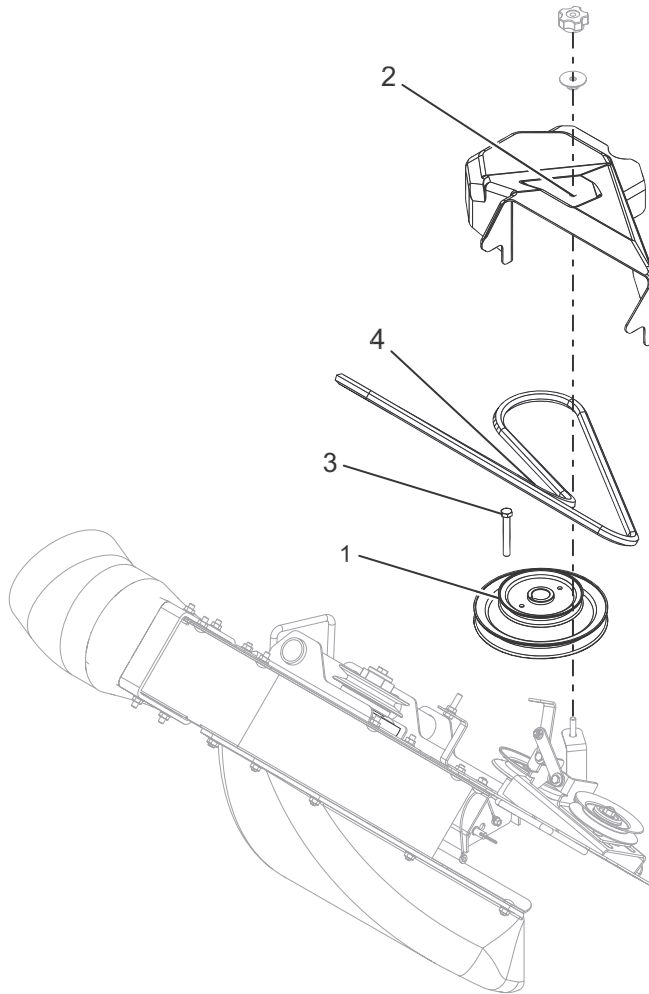
Model 891008



BOM ID	Number	Qty	Description
1	07329151	1	PULLEY, DOUBLE 1.000 ID X 6.750 & 4.250 OD (BLACK)
2	05146600	1	COVER, BELT 52 BLOWER
3	05963000	1	BOLT, HEX 0.375-16X2.75 GR8
4	07200825	1	HEX BELT, ,AA SECTION 67.73"

Kit Components – 60" (79106600)

Model 891008



BOM ID	Number	Qty	Description
1	07347751	1	PULLEY, DOUBLE 1"ID X 7.50"OD & 4.75"OD (BLACK)
2	05146700	1	COVER, BELT 60 BLOWER
3	05963000	1	BOLT, HEX 0.375-16X2.75 GR8
4	07200824	1	HEX BELT, „AA SECTION 71.25"



Ariens Company
655 West Ryan Street
Brillion, WI 54110

gravely.com
(Dealer Locator)

gravely.custhelp.com
(Customer Support)



 An *Ariens* Company Brand