



**STORE+®**  
36" x 34" Vikrell® shower, center drain  
**72300100**



**Features**

- 3-1/8" (79 mm) threshold
- Durable high-gloss finish
- Three-piece tongue-and-groove walls with snap-together installation
- Includes four rimmed shelves, two large bins, two shower hooks and two soap dishes with towel bars; shaving ledge/footrest

**Material**

- Made from solid Vikrell® material for strength, durability, and lasting beauty

**Installation**

- Alcove
- Center drain
- Caulk-free installation

**Recommended Products/Accessories**

1500D-36 Framed pivot shower door  
80001012 12" straight grab bar  
80001018 18" straight grab bar  
80001024 24" straight grab bar  
K-23726 Drain treatment  
K-23733 Vikrell® cleaner

**Included Components**

72301100 36" x 34" Vikrell® shower base, center drain  
72302100 36" Vikrell® shower back wall  
72305100 34" Vikrell® shower end wall set



**Codes/Standards**

CSA B45.5/IAPMO Z124  
ASTM E162  
ASTM E662  
HUD, UM Bulletin 73  
IAPMO Certification


**STERLING® Vikrell® or Acrylic Baths and Shower Bases Ten-Year Limited Warranty**

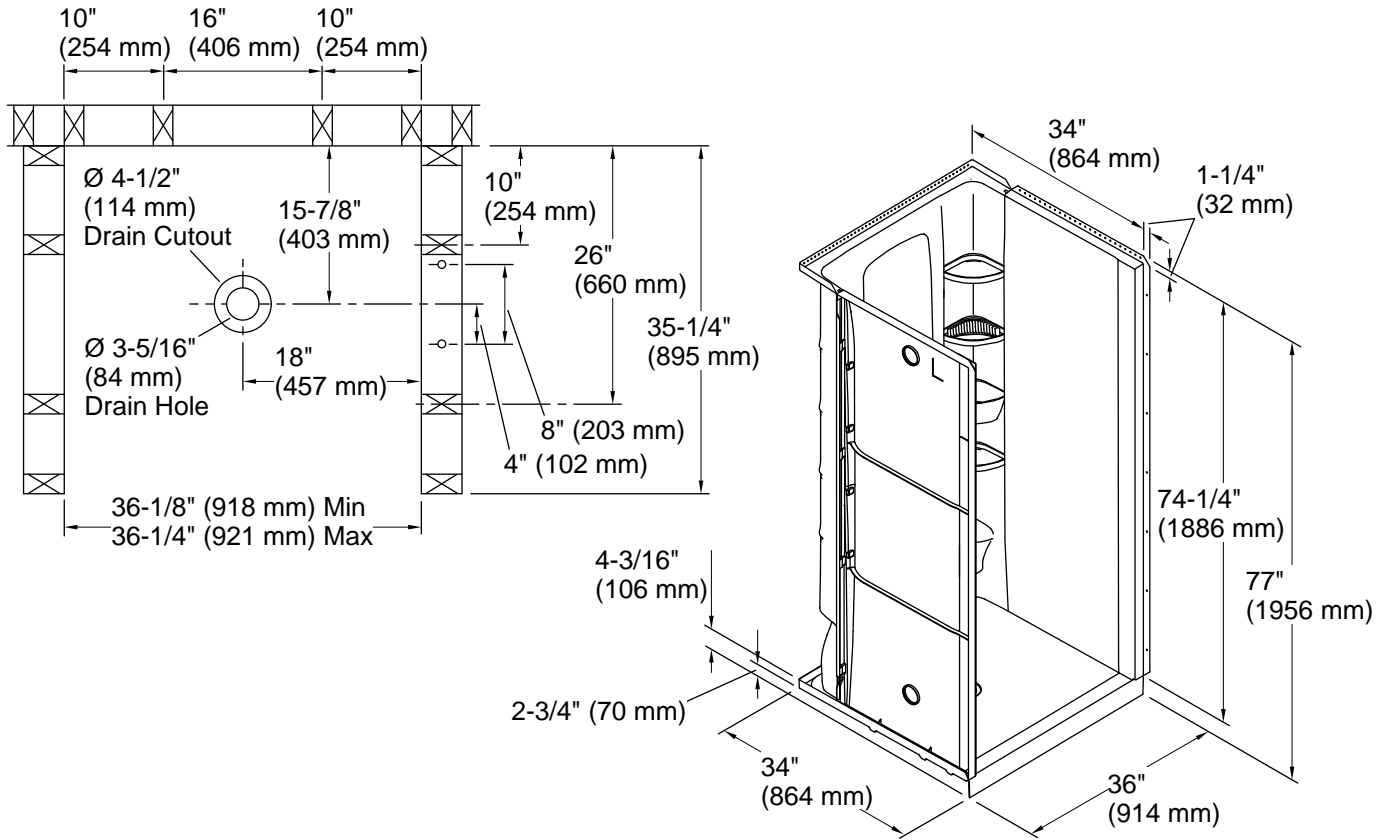
See website for detailed warranty information.

**Available Colors/Finishes**

*Color tiles intended for reference only.*

**Color Code Description**

	0	White
---	---	-------



### Technical Information

All product dimensions are nominal.

Drain location:	Center
Basin area, bottom:	29-3/16" x 32-3/4" (742 mm x 832 mm)
Basin area, top:	29-3/16" x 32-3/4" (742 mm x 832 mm)
Weight:	92.4 lbs (41.9 kg)
Minimum flat for door:	2-1/2" (64 mm)
Maximum door height:	72-1/2" (1842 mm)
Maximum door width:	32-3/4" (832 mm)

### Notes

Install this product according to the installation instructions.

Studs should be positioned roughly as shown. Double studding is recommended for pivot shower door installations.